

An aerial photograph showing a long, narrow sandy beach curving along the coast. To the left of the beach is a dense green forest. Further inland, there are patches of agricultural fields and some small buildings. The ocean is a deep blue, with white surf visible where waves break onto the shore. The sky is blue with some light clouds.

# Osaki Recycle System

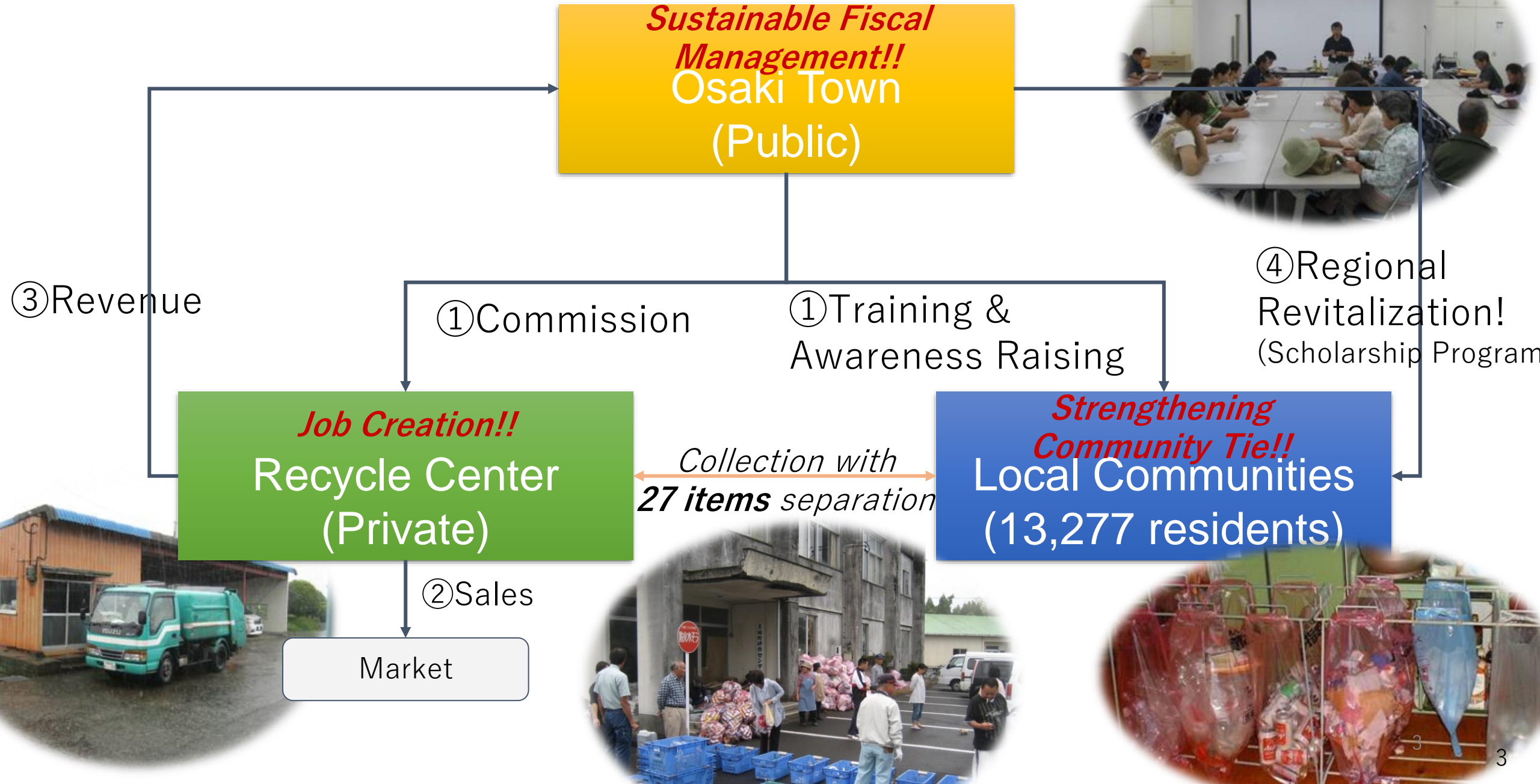
Akiyo Morita, Senior Researcher , Keio University

# What made Osaki Recycle System?



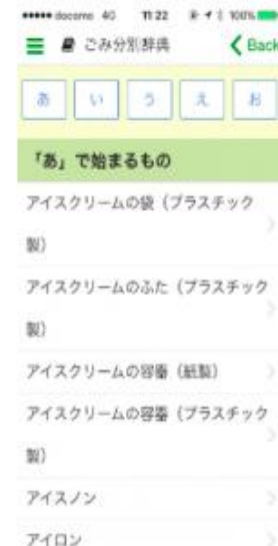
**Limited Capacity of Dumping Site**

# Osaki Recycle System


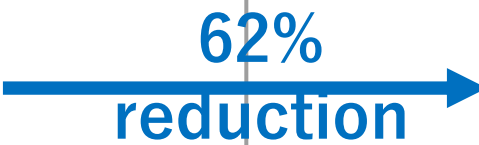


[illegible]

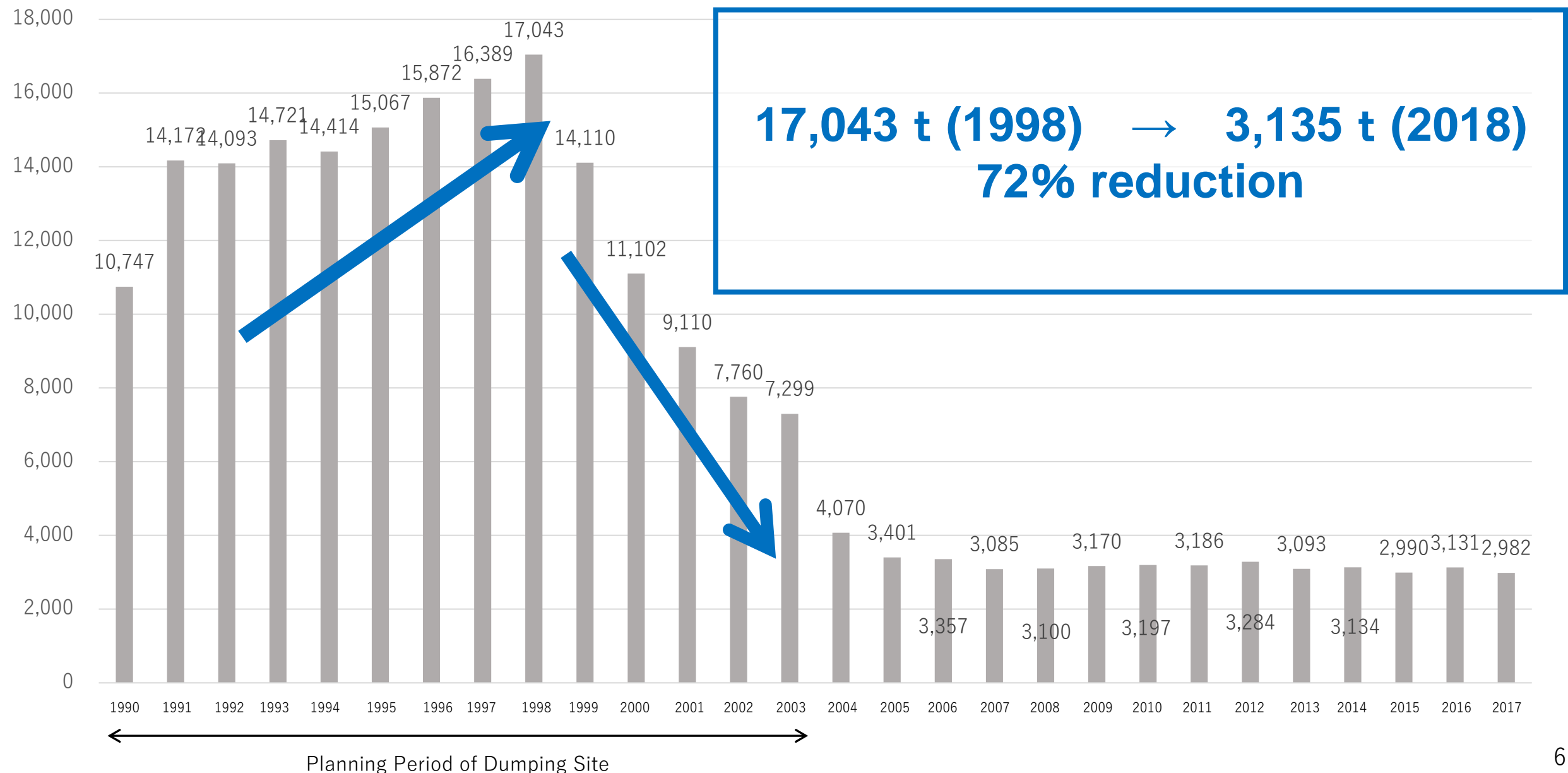
大崎町  
み分別アプリ



# Impact of Osaki Recycle System

	Japan (2016)	Osaki-town (2018)
Waste Generation per Day/Person	925g	899g
Recycle Rate	20.3%  83.1%	
Cost of Waste Management	160USD  100USD	
Sales of Recycled Materials	N/A	64,563 USD

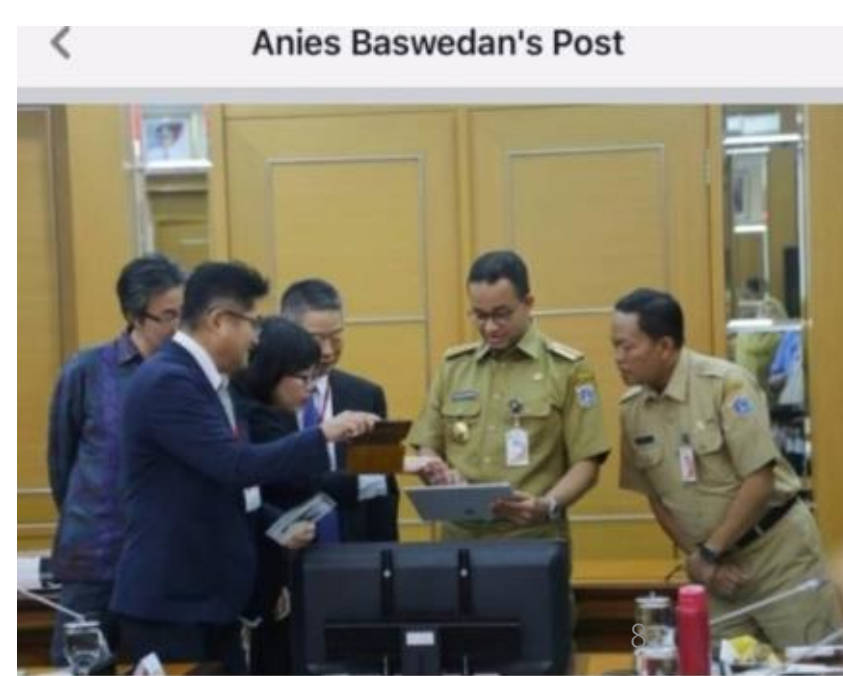
# Total Amount of Household Garbage in Osaki Town



# International Cooperation from Osaka to Indonesia with JICA

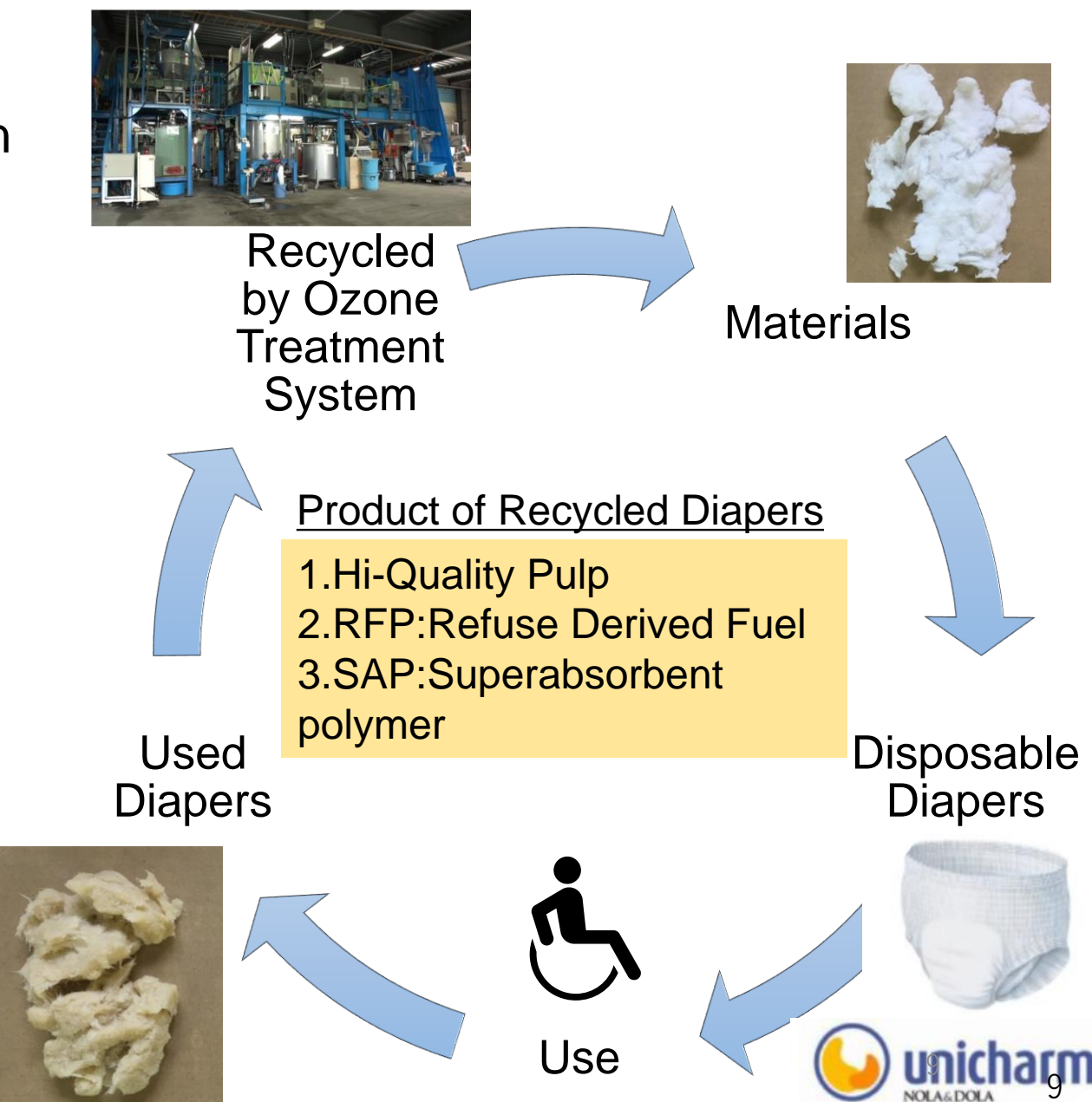
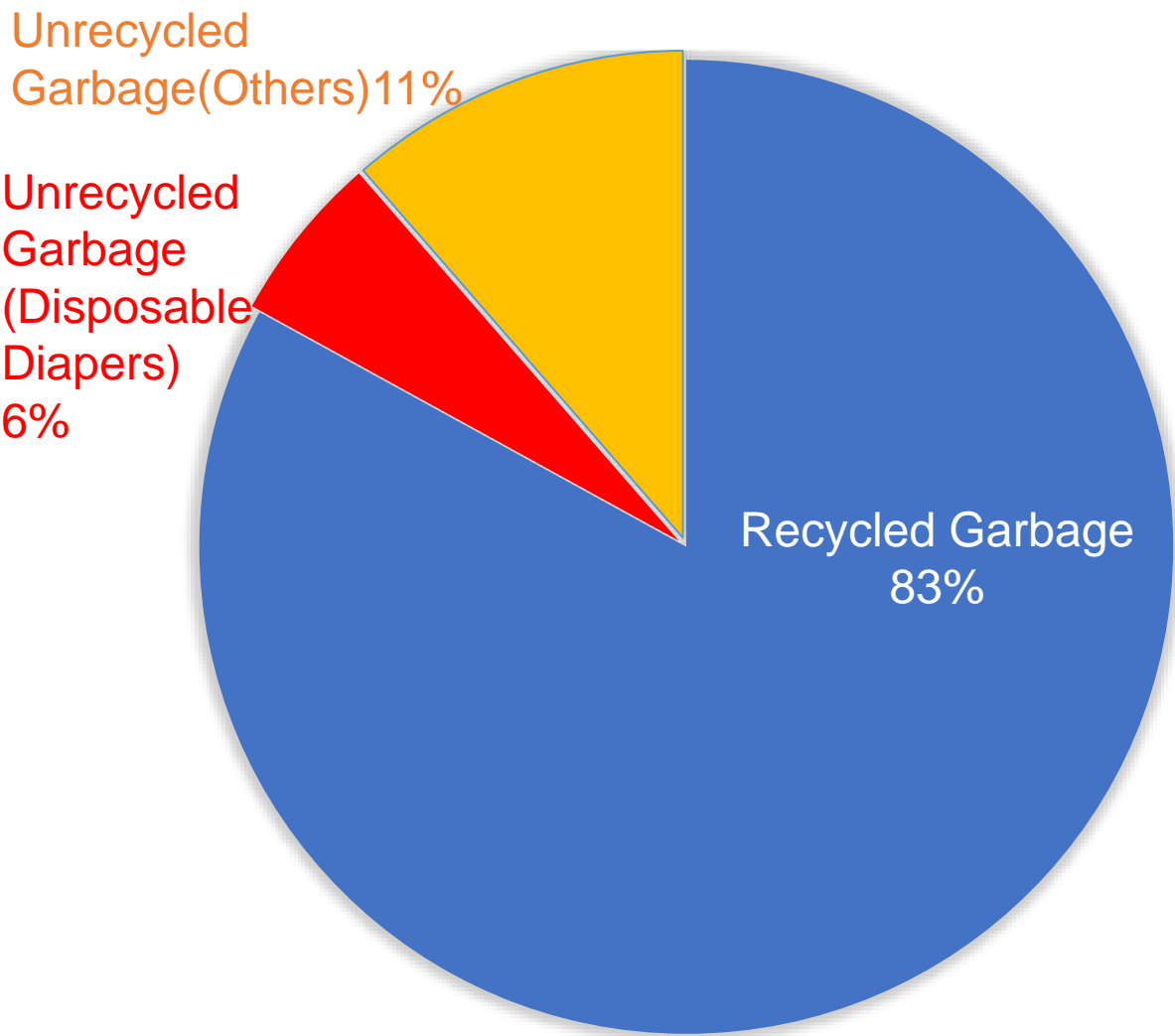


No	Project Title	Project Site	Schedule	Status
1	Project for promotion of sustainable community-based recycling society of Depok City, West Jawa Province	Depok	2012-2014	Completion
2	Project for promotion of sustainable community-based recycling society of Denpasar City, Bali Province	Bali	2015-2017	Completion
3	Project transferring the technology of "OSAKI SYSTEM" to the Bali Province	Bali	2020-2023	On-going
4	Verification Survey with the Private Sector for Disseminating Japanese Technologies for Non-incineration Domestic Waste Disposal System by Local Government with Community Participation	Jakarta	2020-2023	On-going



# New Recycle System of Disposable Diapers

Rates of Recycle and Unrecycled in Osaki Town



# SDGs leads to Circular Management Models





**“Osaki Recycle System” for  
all over the world**