

Presentation issued without formal editing

FOR PARTICIPANTS ONLY

14 March 2017

ENGLISH ONLY

**UNITED NATIONS
CENTRE FOR REGIONAL DEVELOPMENT**

In collaboration with

**Ministry of Public Works and Transport, the Government of Lao PDR,
Ministry of the Environment (MOE), Japan
Partnership on Sustainable, Low Carbon Transport,
United Nations Economic and Social Commission for Asia and the Pacific, and
United Nations Office for Sustainable Development**

**TENTH REGIONAL ENVIRONMENTALLY SUSTAINABLE TRANSPORT (EST)
FORUM IN ASIA,
14-16 MARCH 2016, VIENTIANE, LAO PDR**

**Country Presentation
(Indonesia)**

(Presentation for EST Plenary Session 6 of the Provisional Programme)

This presentation has been prepared by the Government of Indonesia for the Tenth Regional EST Forum in Asia. The views expressed herein are those of the author/s only and do not necessarily reflect the views of the United Nations.

Disclaimer: The designations employed and the presentation of the material in this publication do not imply the expression of any opinion whatsoever on the part of the Secretariat of the United Nations concerning the legal status of any country, territory, city or area or of its authorities, or concerning the delimitation of its frontiers or boundaries.

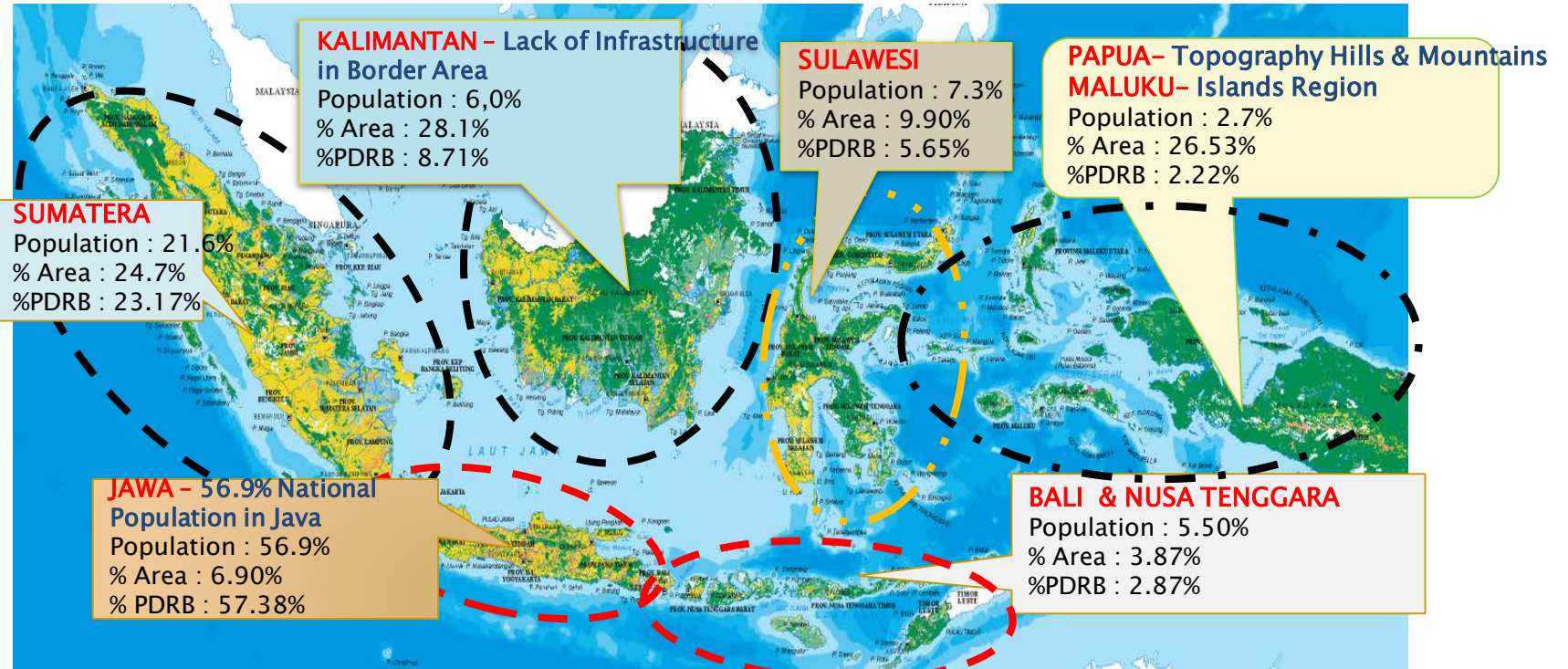


10TH REGIONAL EST FORUM
IN ASIA,
14-16 MARCH 2017,
VIENTIANE, LAO PDR

Country
Presentation
INDONESIA

CRITICAL CHALLENGES

- ❑ Widening region of Indonesia with different condition
- ❑ Coordination among institution
- ❑ Limited budget
- ❑ Population Growth
- ❑ Urban Growth
- ❑ Private Car



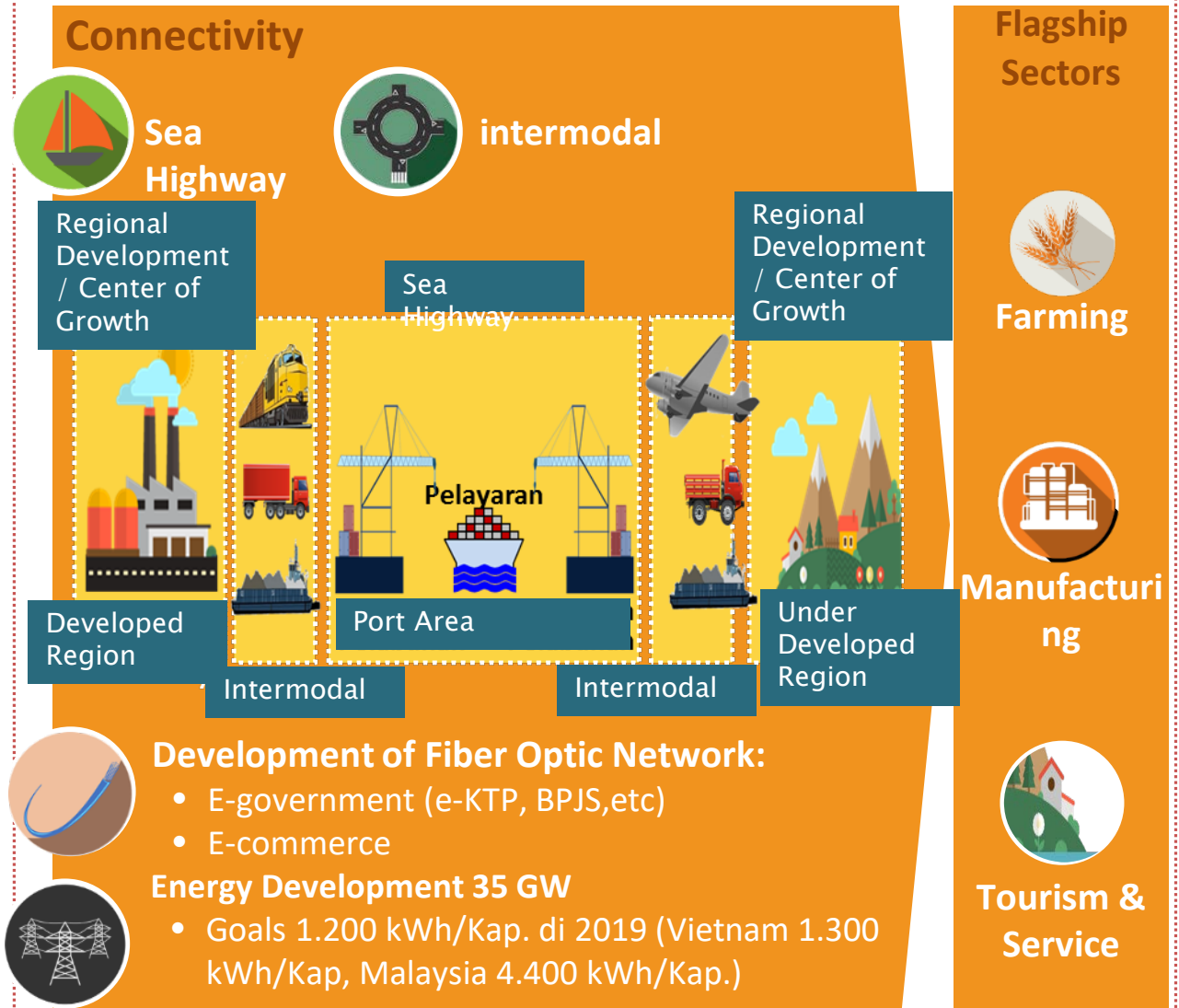
Rsource: Statistical Beuere of Indonesia (2015)

THE FRAMEWORK OF INDONESIA INFRASTRUCTURE DEVELOPMENT 2015-2019

Providing Basic Amenity

-  Access of Clean Water 100%
-  Access of Sanitation 100%
-  Ratio of Electrification 100%
-  Access of Livable Residential
-  Accessibilities of Border and Rural Area
-  Transportation Safety and Security

Infrastructures Supporting Flagship Sectors



Urban Transport

-  Development of Mass Transit based on road, railway and intermodal
-  Developing Capacity and Quality of Urban Road Network

The Concept of Urban Transport Developing

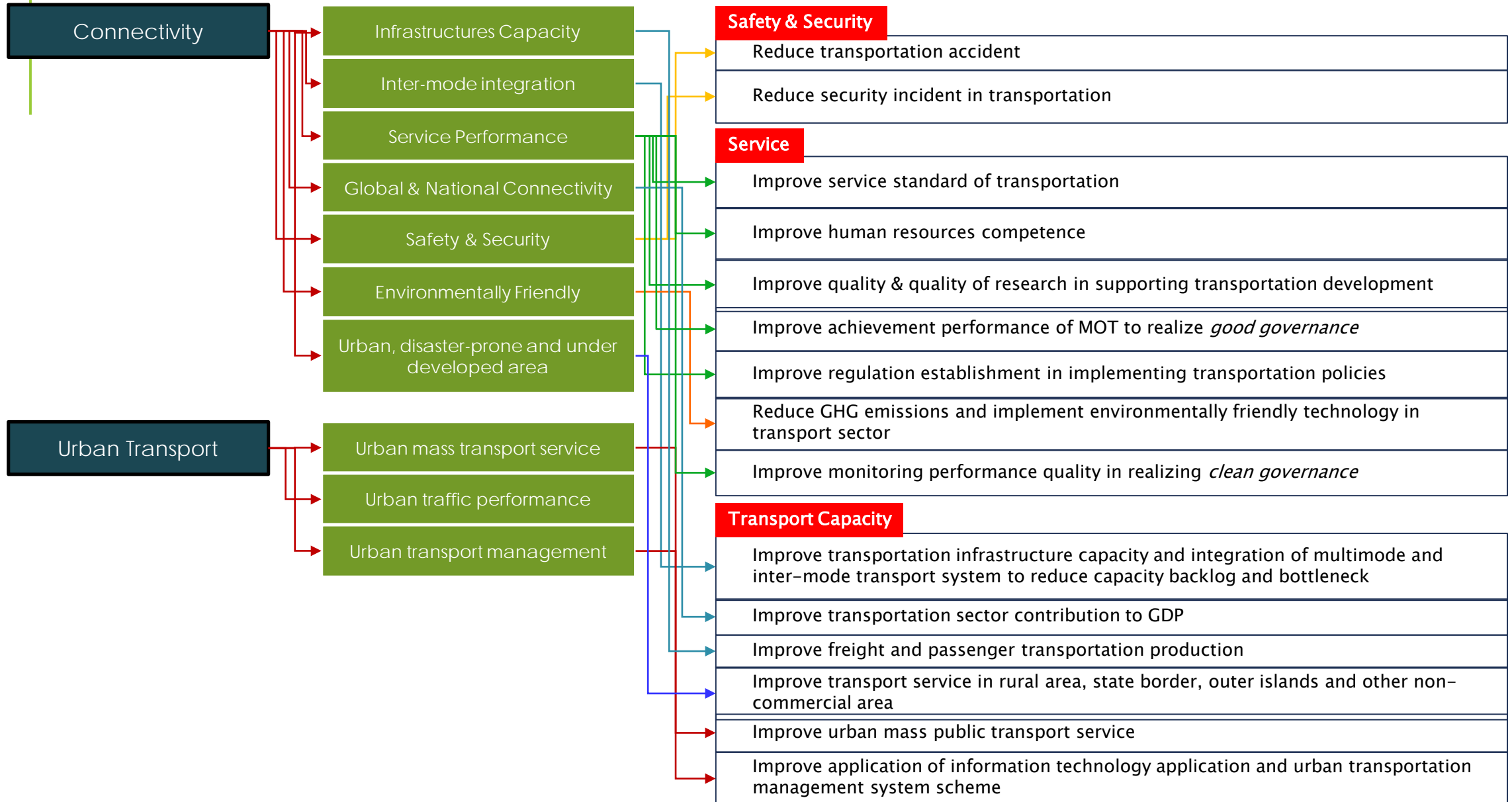


Avoid Shift Improve

| Avoid | Shift | Improve |
|--|-----------------------------------|----------------------------------|
| Network that support Travel Efficiency | Increasing Public Transport Share | Increasing the Use of Technology |

-  Developing Sustainable Urban Transport
-  Integration of Transportation Institution

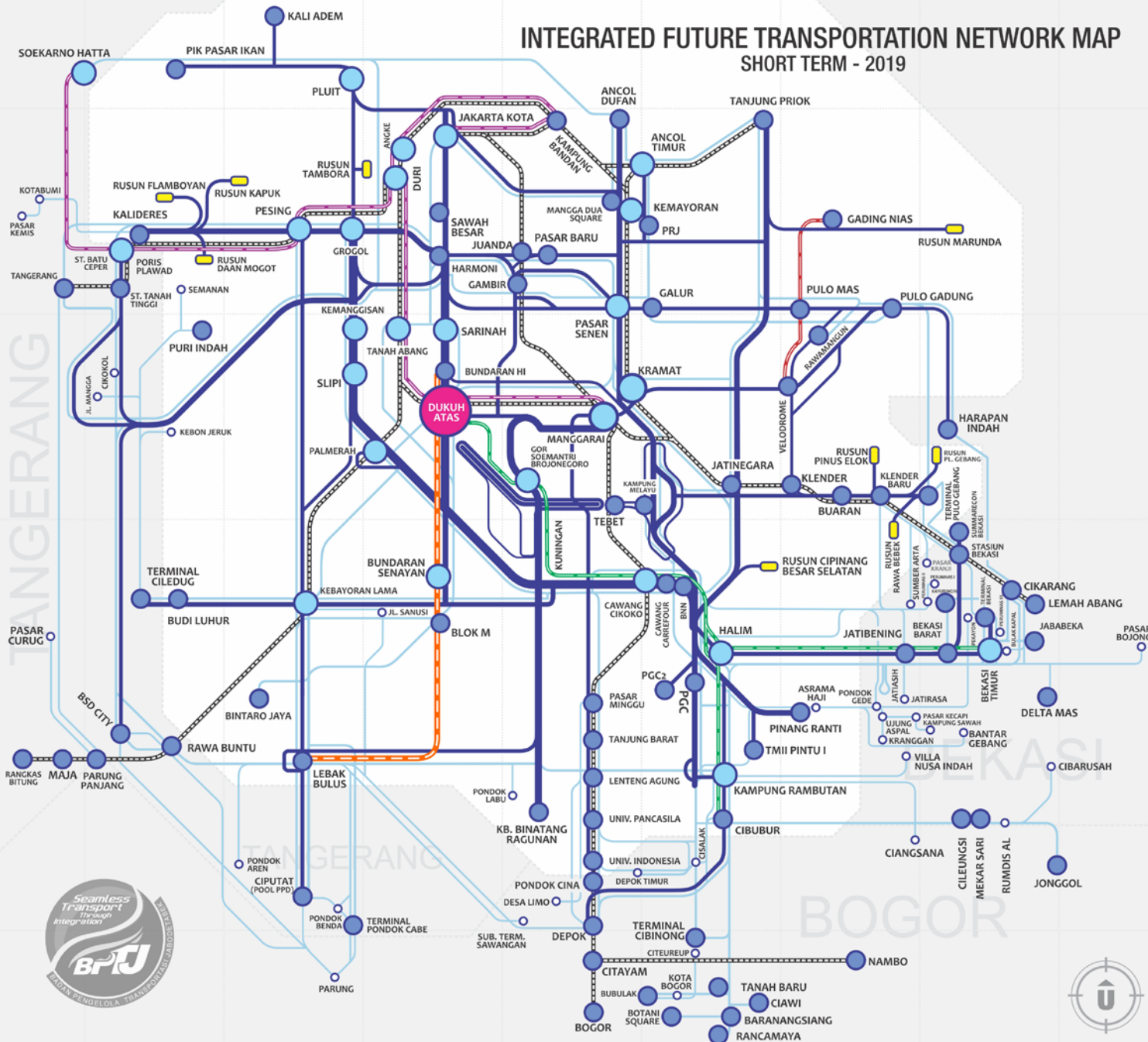
Transportation Strategic Planning



INTEGRATED FUTURE TRANSPORTATION NETWORK MAP SHORT TERM - 2019



**BADAN
PENGELOLA
TRANSPORTASI
JABODETABEK**



LEGEND

ROUTES

- TRANSJAKARTA
- TRANSJABODETABEK
- COMMUTER LINE
- LRT - KEMENHUB
- LRT - DKI JAKARTA
- AIRPORT COMMUTER LINE
- MRT
- DKI JAKARTA BORDERLINE

- SMALL NODE (78)
- MEDIUM NODE (25)
- LARGE NODE (1)
- PUBLIC HOUSING FEEDER (9)
- SUBURBAN SERVICE (40)

APPROVED BY:

SUPPORTED BY:



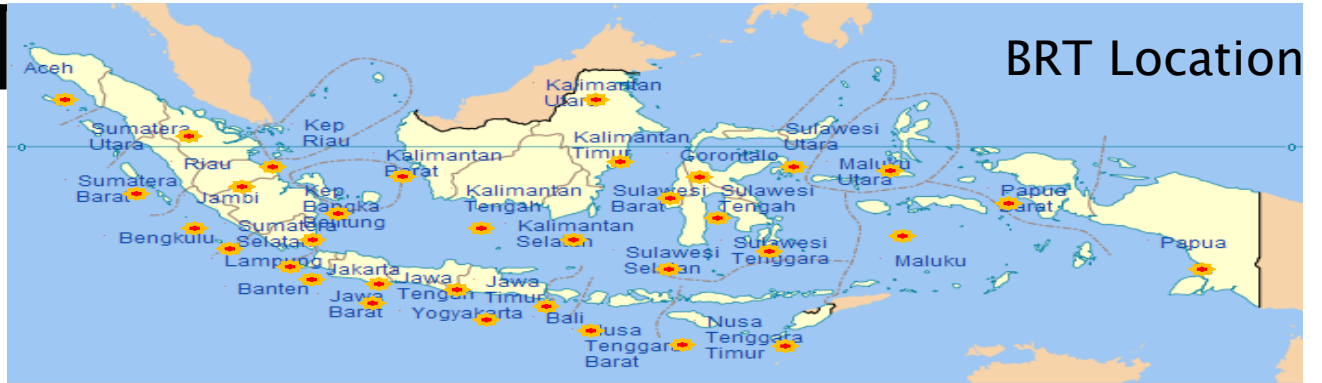
ACTUAL ACHIEVEMENT

Transport infrastructure:

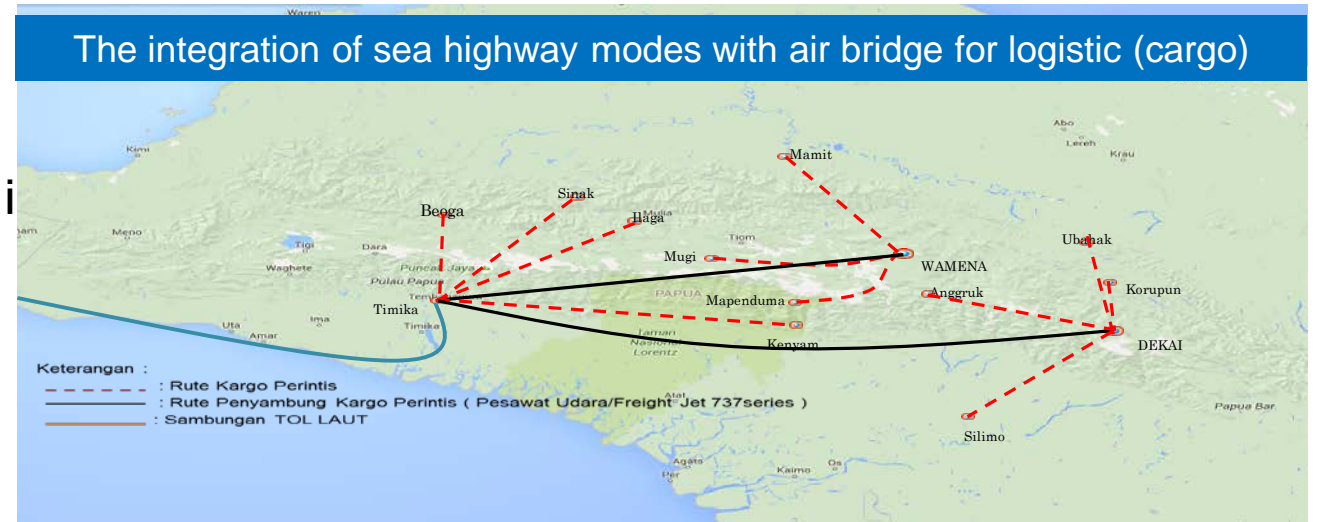
- ❑ Bus terminal in 19 location
- ❑ Station 22 location
- ❑ Port 150 location
- ❑ Airport 149 location
- ❑ Port inland waterways 54 location
- ❑ Railway Network along 691,63 km

Means Transportation:

- ❑ Ship for pioneer Sea transport 100 ships
- ❑ Ship for inland waterways 13 ships;
- ❑ Bus for Bus Rapid Transit (BRT) 1.841



Port Inland Waterways



CURRENT DEVELOPMENT OF MASS PUBLIC / URBAN TRANSPORT IN INDONESIA

JAKARTA

1. Light Rail Transit (LRT), Jakarta Government / JAKPRO
2. Light Rail Transit (LRT), Ministry Transportation /Adhi Karya
3. Mass Rapid Transit (MRT), PT. MRT
4. Airport Railway (CL & Ekspress), PT. KAI
5. Jakarta – Bandung High-speed Train (KCIC)
6. Automatic People Mover System (APMS), Soekarno-Hatta Airport
7. Commuter Line (CL), PT. KCI
8. Bus Rapid Transit (BRT), PT. Transjakarta

SUMATERA

1. Trans Sumatera Railway
2. LRT Palembang

KALIMANTAN

- Trans Kalimantan Railway

SULAWESI

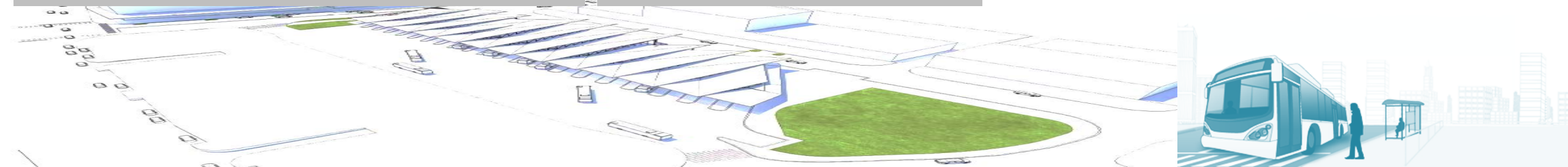
- Trans Sulawesi Railway

PAPUA

- Trans Papua Railway

BANDUNG

- Metro Capsule



Thank You Terima kasih

