

# People-oriented Urban Planning and Design in Hong Kong Special Administrative Region of China

**Simon Ng**

Independent Consultant

Presentation at the Intergovernmental 11<sup>th</sup> Regional EST Forum in Asia  
2-5 October 2018, Ulaanbaatar, Mongolia

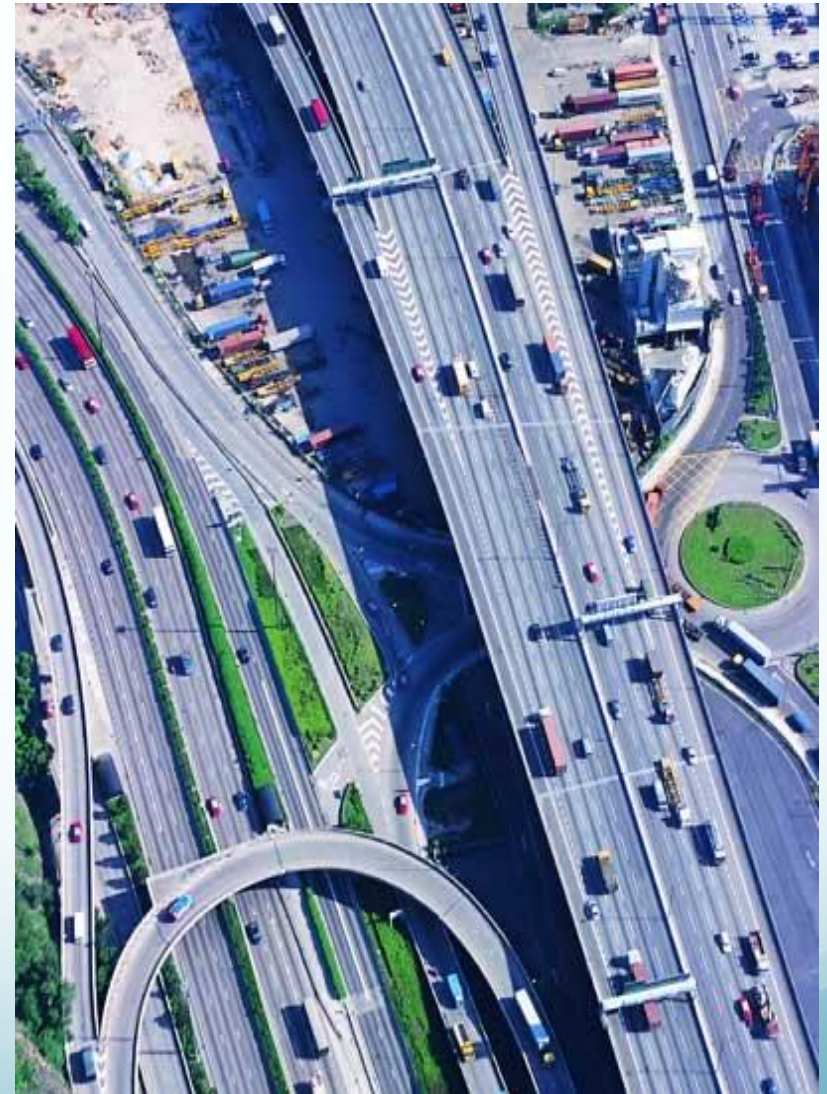
# A dense and compact city ...



... with skyscrapers



# Investment in mega projects



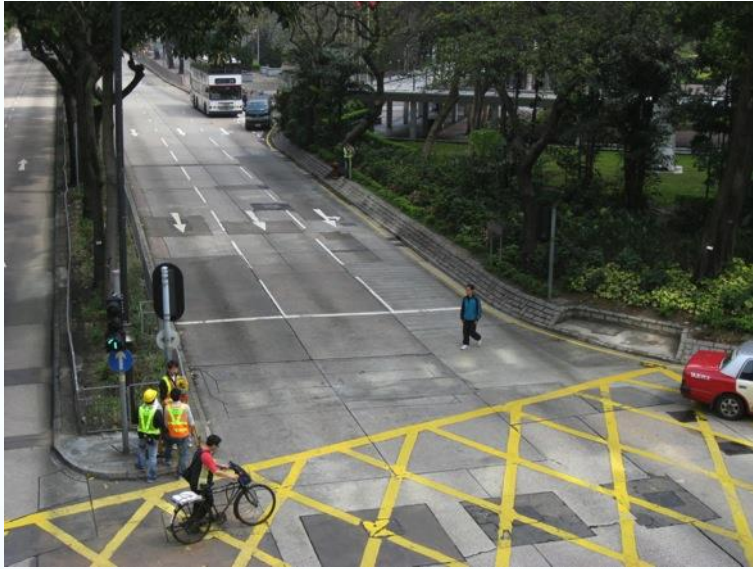
# Priority to cars ...



... over people



# Unfriendly walking environment



# Conflict, equity and other issues





# Paradigm shift in transport planning

- **Car-centric**



- ❑ Focus on unobstructed flow of vehicular traffic
- ❑ Accord priority to vehicles over people
- ❑ Some investment in public transport
- ❑ Limited planning for pedestrians' need

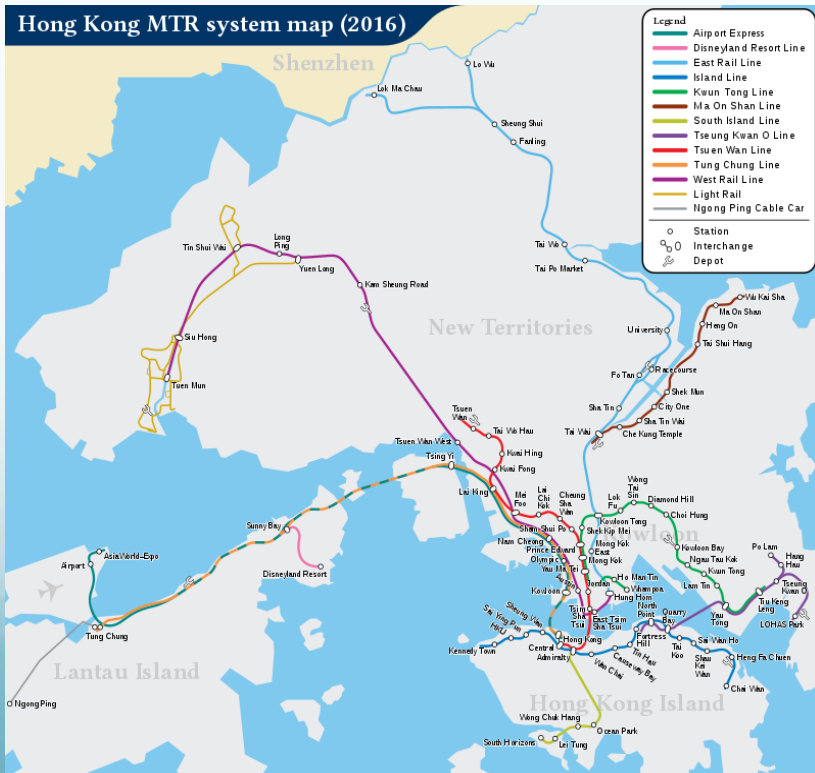


- **People-first**

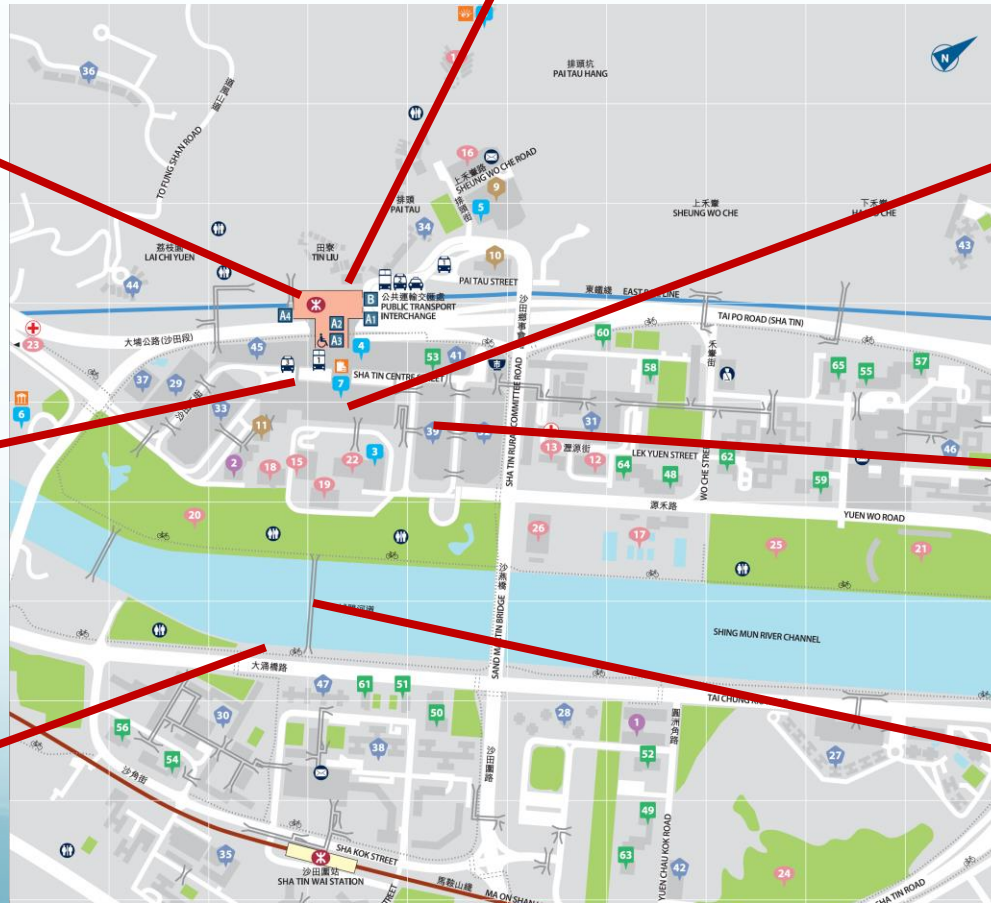


- ❑ Focus on transport need of people, including walkability
- ❑ Accord priority to pedestrians
- ❑ Improve integration with public transport
- ❑ Lower priority for private cars; implement traffic calming measures where appropriate

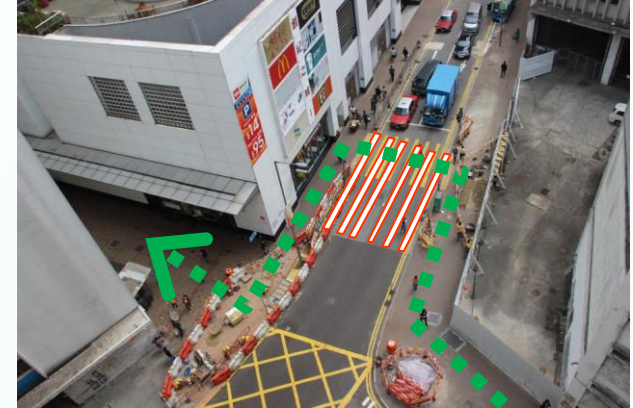
# Emphasis on public transport and high usage



# Transit-oriented development



# Enhancing walkability



# Preserving street life



# Grass root initiative: Central

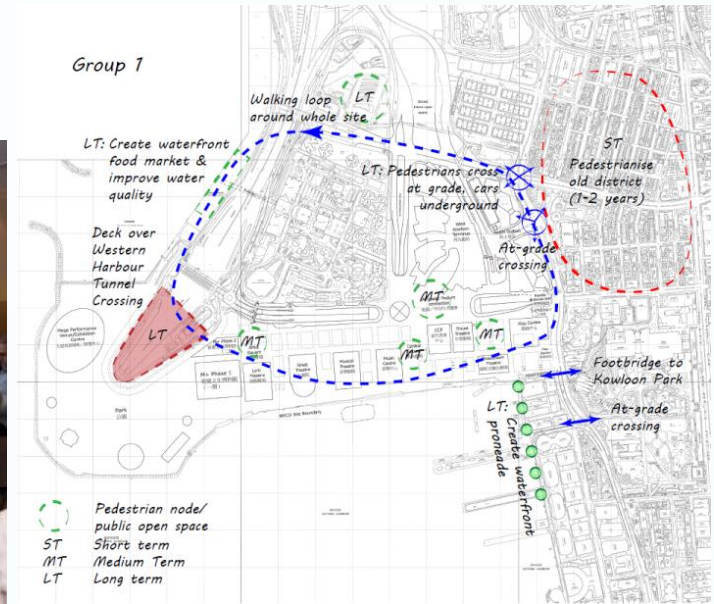


**Tram & pedestrian precinct in Central**

# Government initiative: Kowloon East



# Planning with people and for people





# Thank you

**Simon K W Ng**

[ngsimonkw@gmail.com](mailto:ngsimonkw@gmail.com)