

LISD LIECHTENSTEIN INSTITUTE FOR
STRATEGIC DEVELOPMENT

Building the City of the Future – through innovative urban design and development oriented transit

Six rules for success

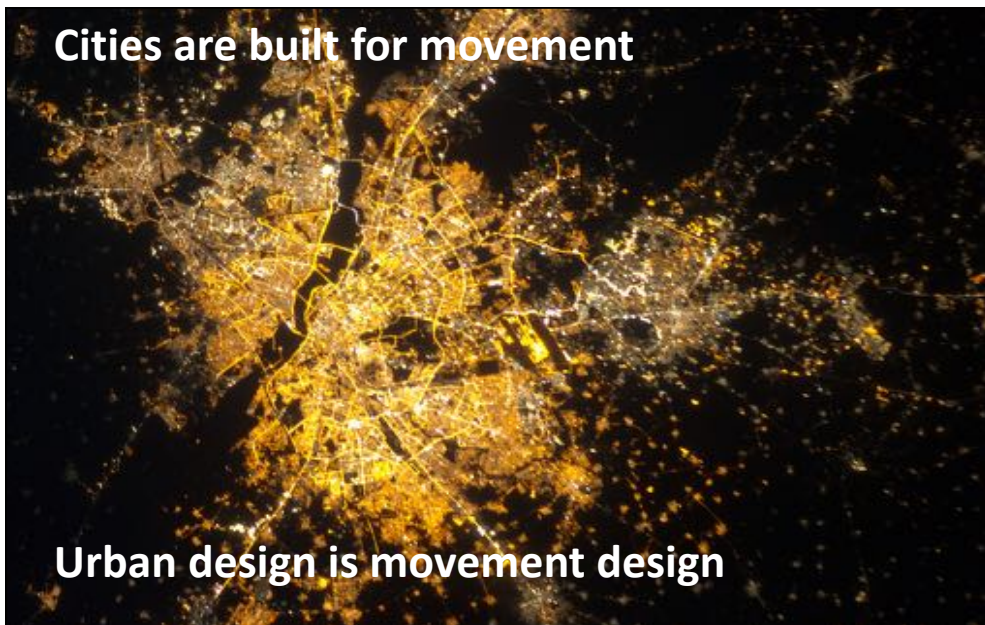
Professor Peter Droege, Director, Liechtenstein Institute for Strategic Development, Berlin

3 October 2018

LISD

www.eurisd.de

Cities are built for movement



Urban design is movement design

LISD

www.eurisd.de



Delhi

LSD

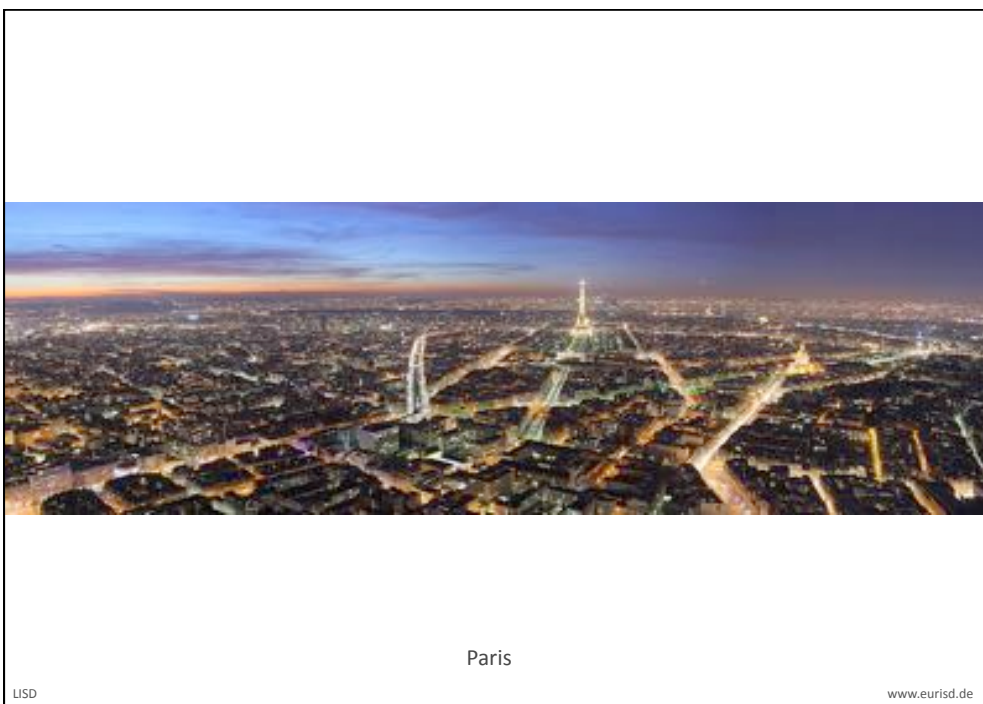
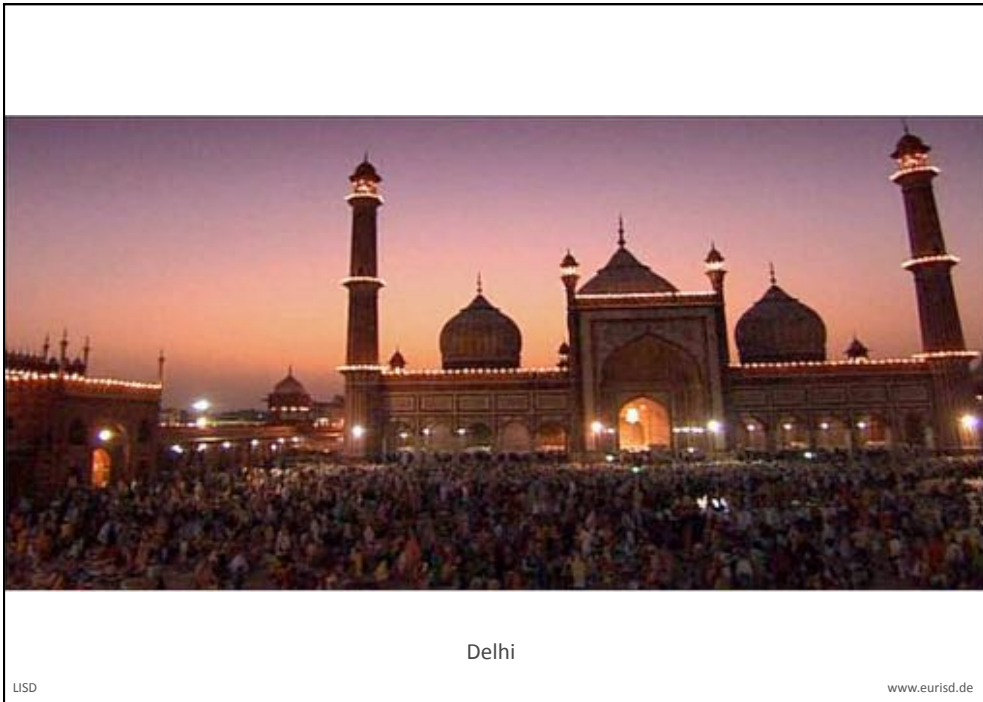
www.eurisd.de



Delhi

LSD

www.eurisd.de





Moscow

LISD

www.eurisd.de



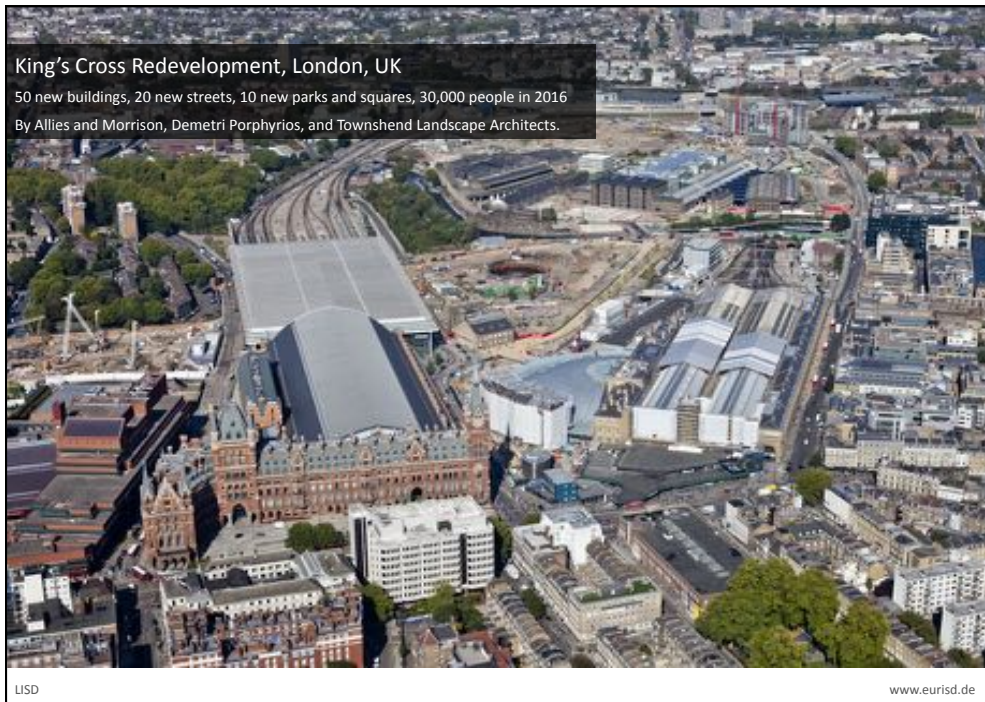
London

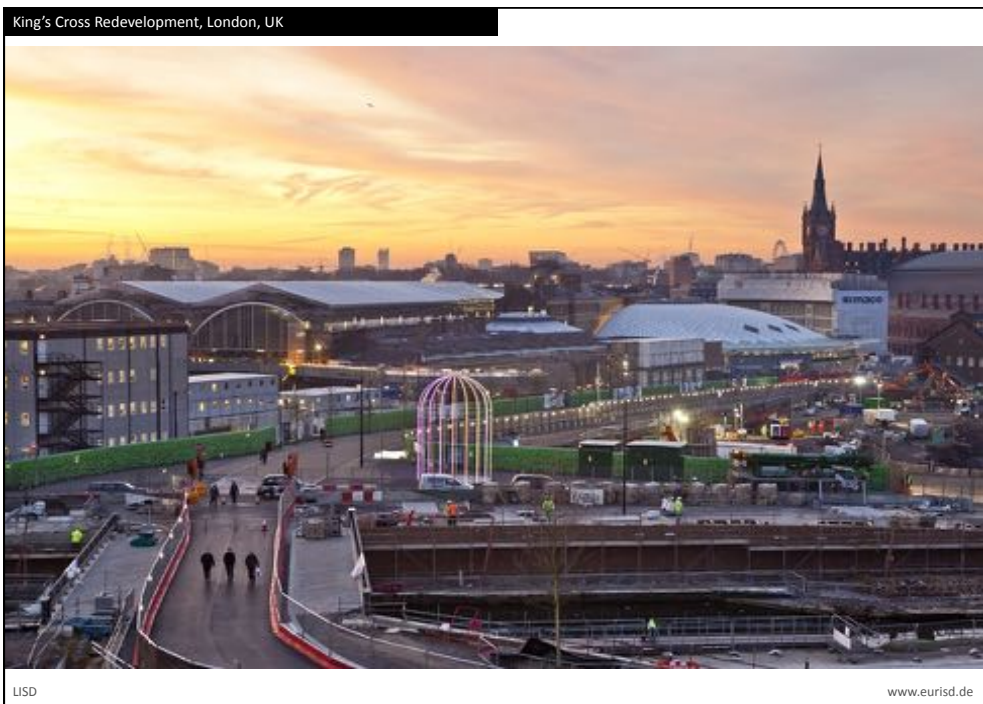
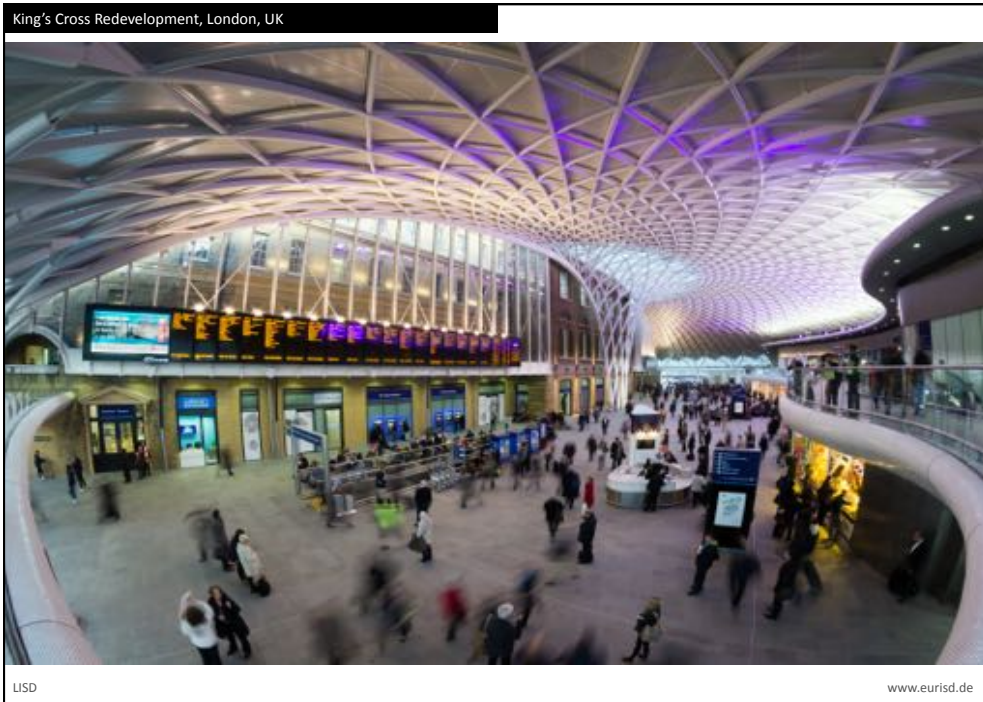
LISD

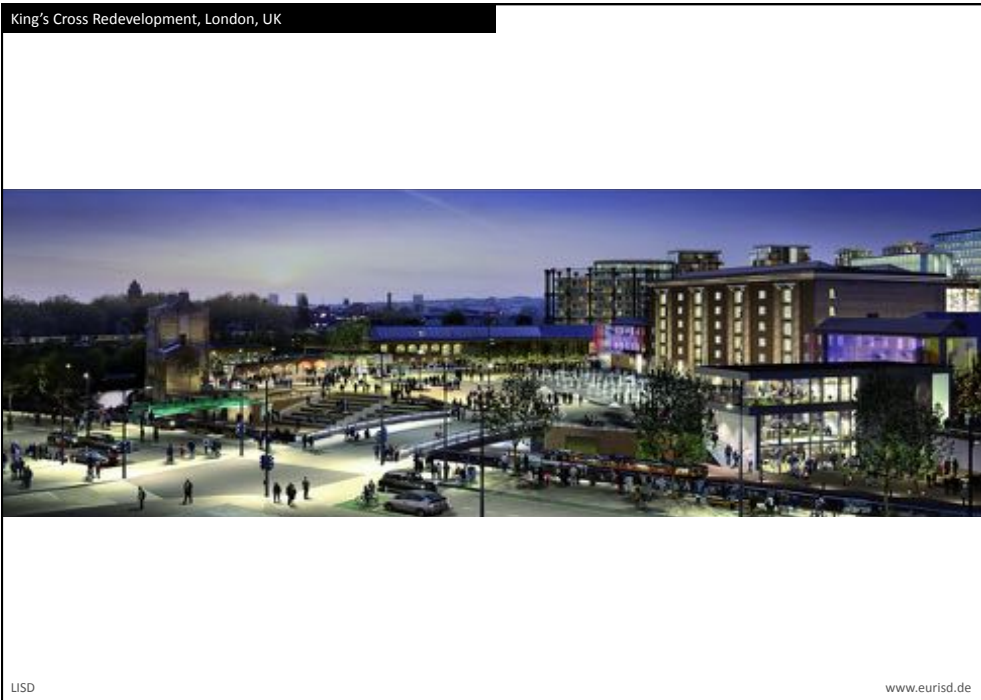
www.eurisd.de

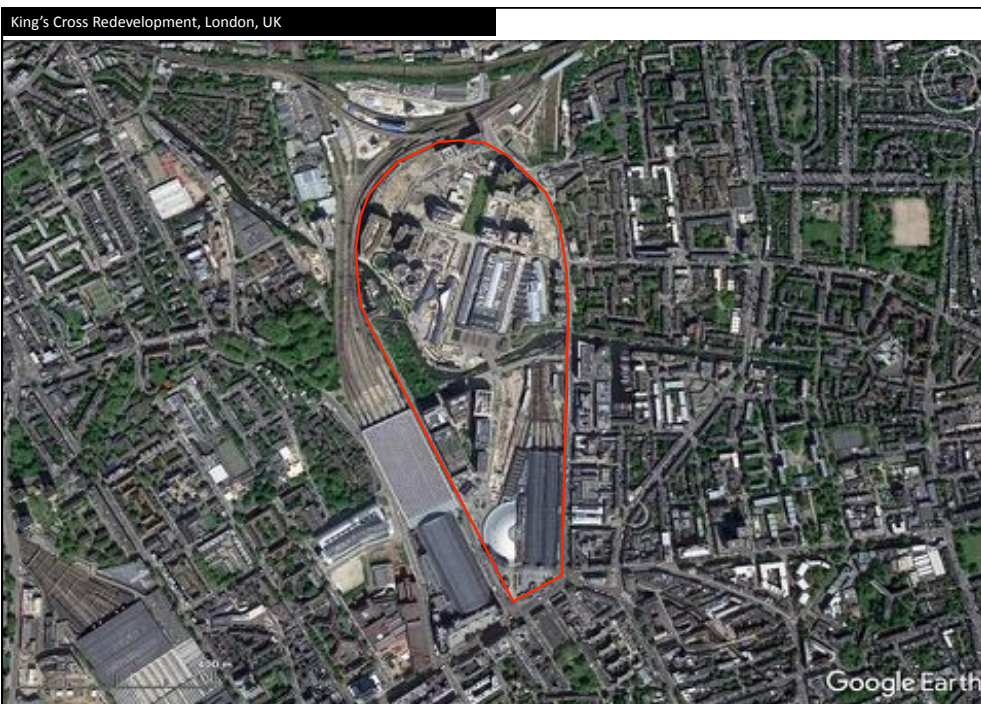


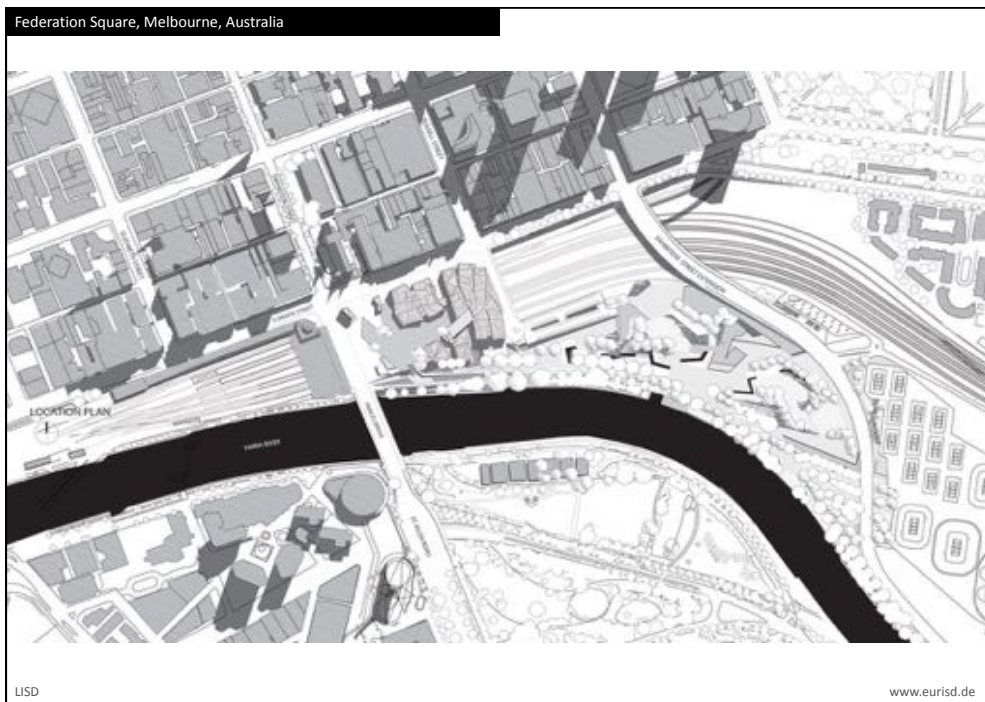
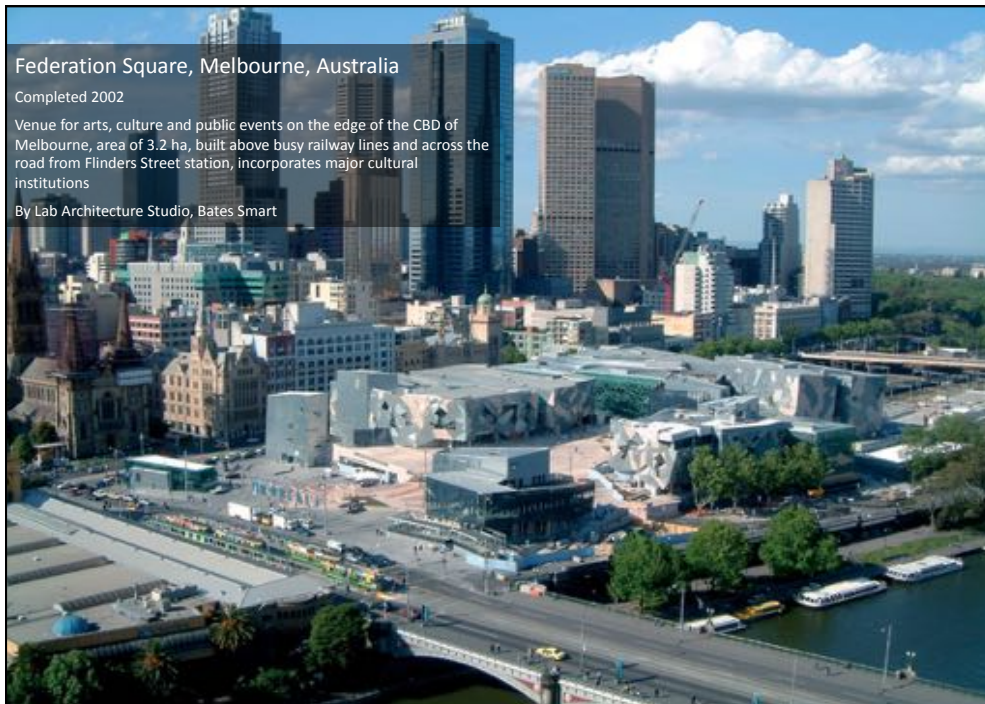
1 Build on the DNA for sustainable transit

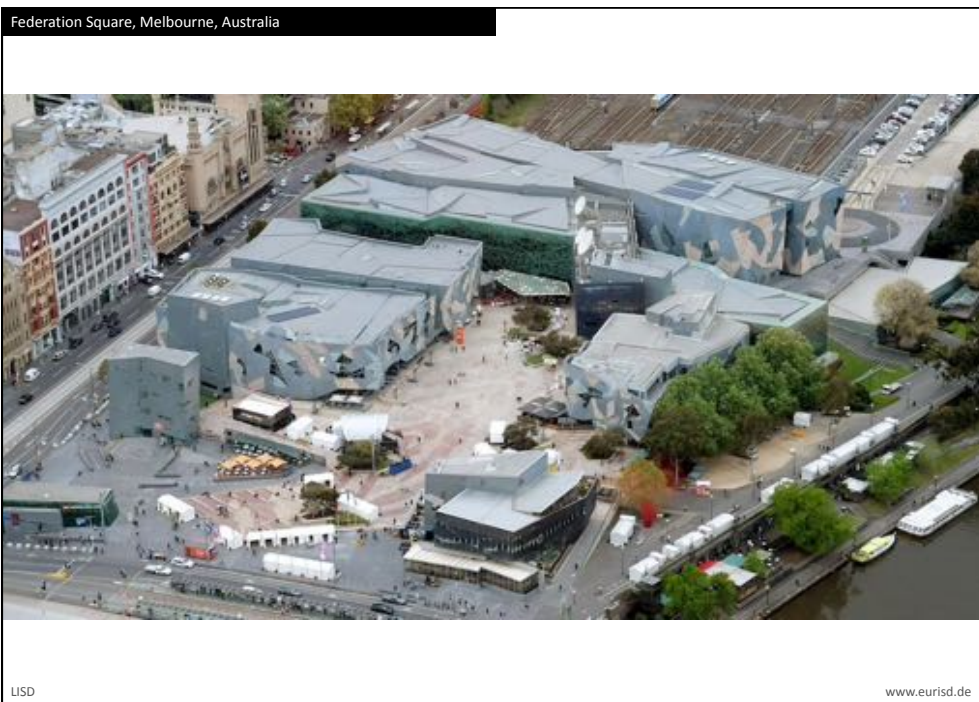


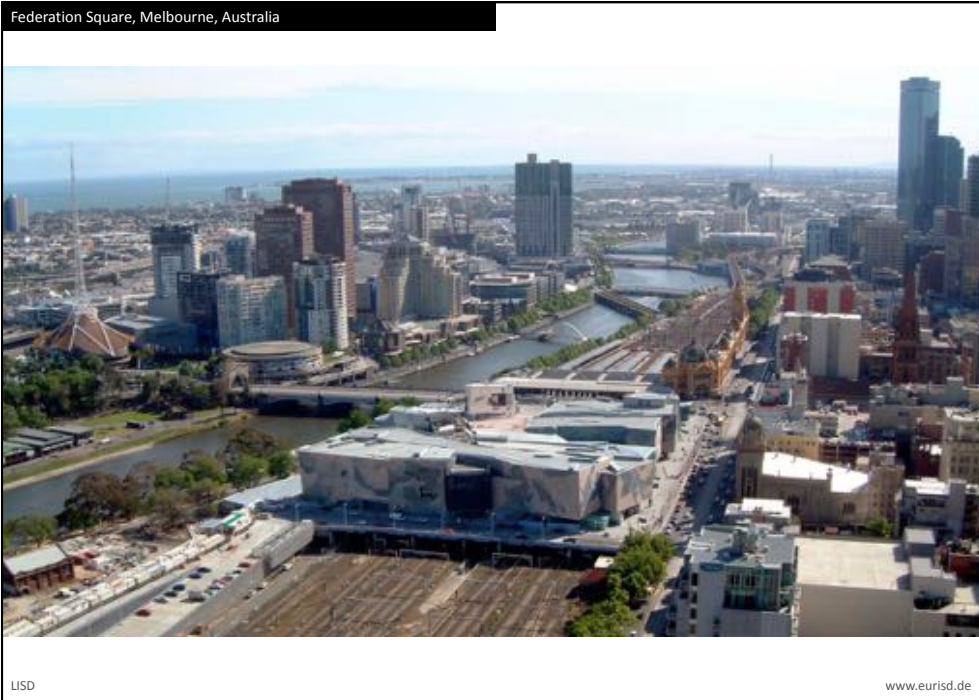


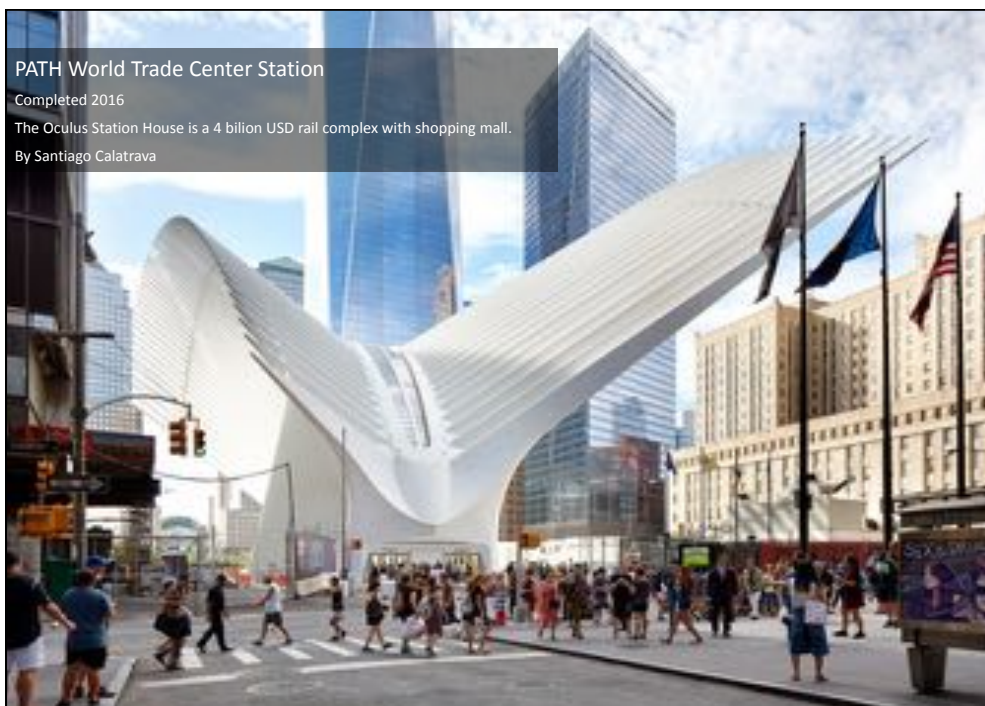
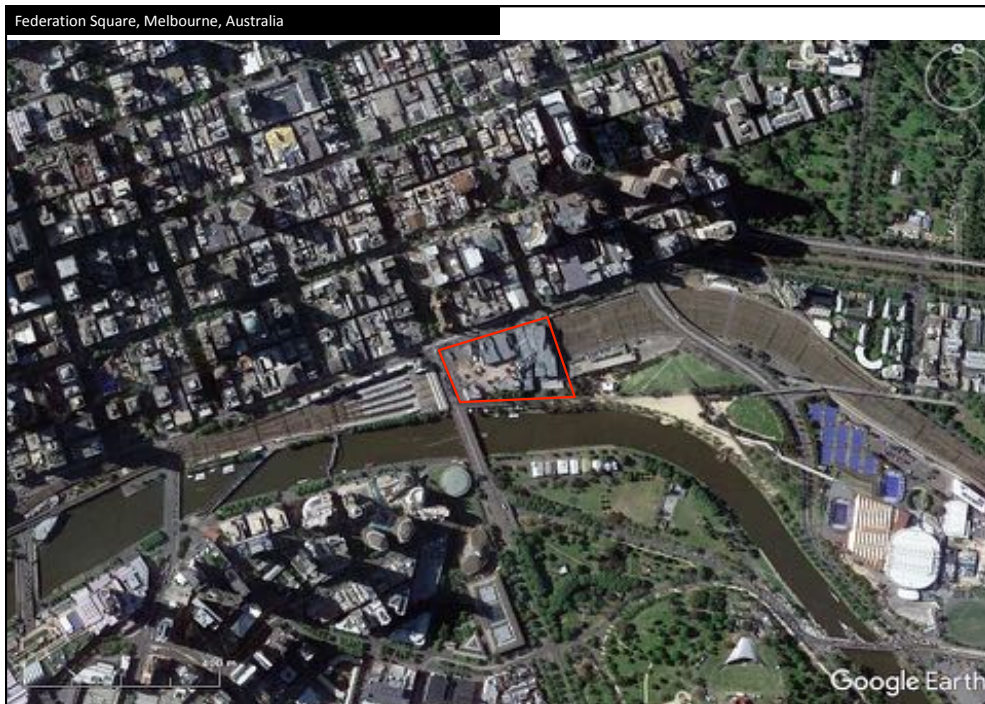


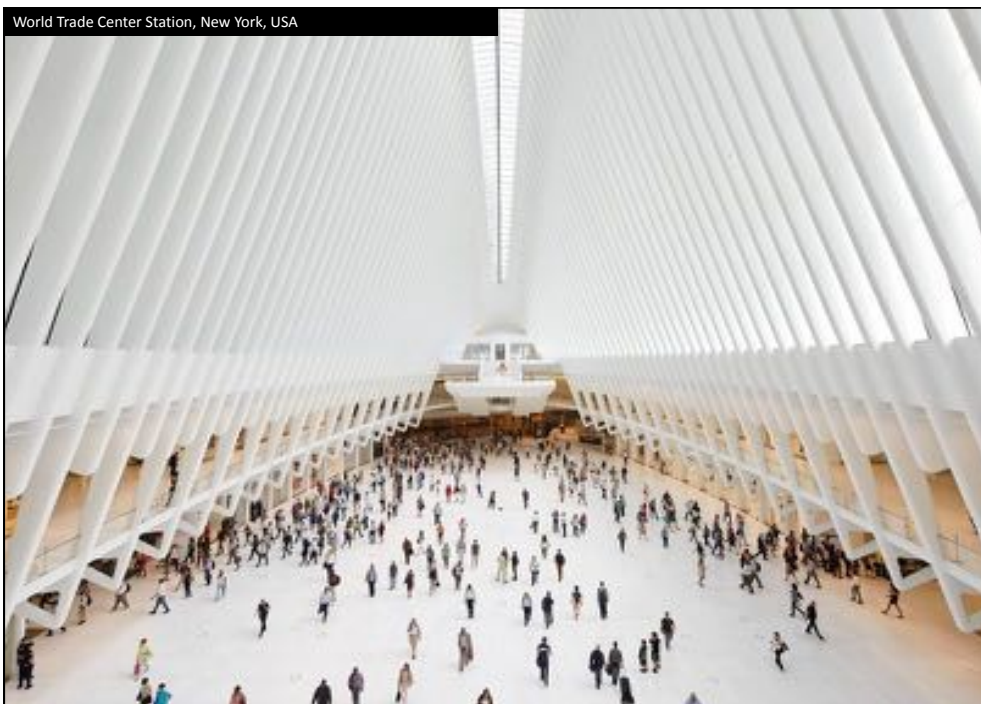
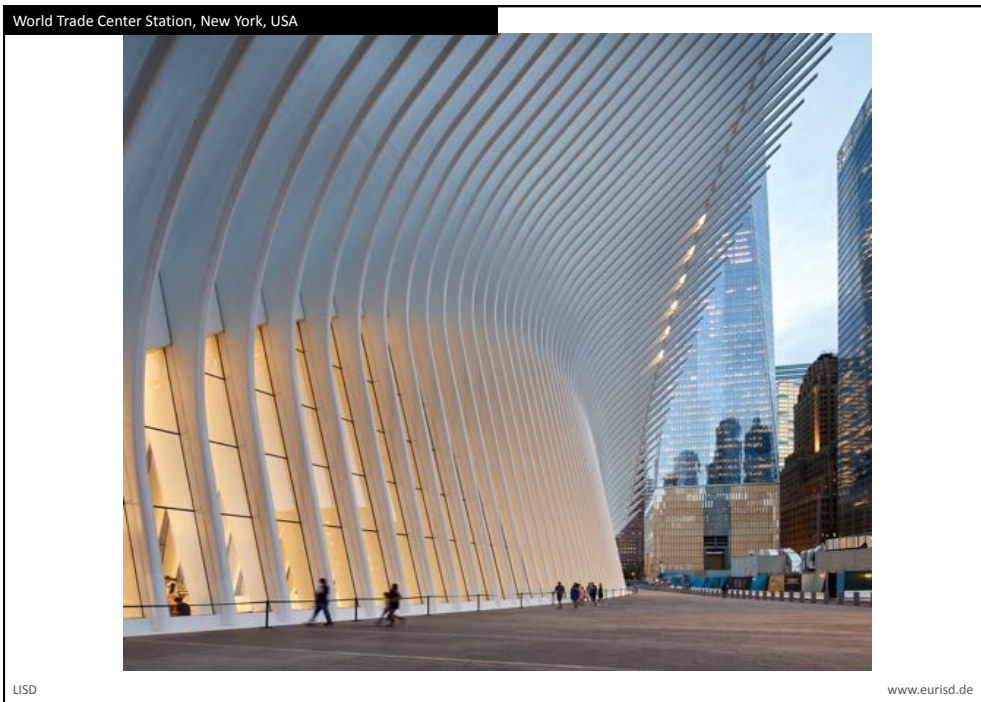






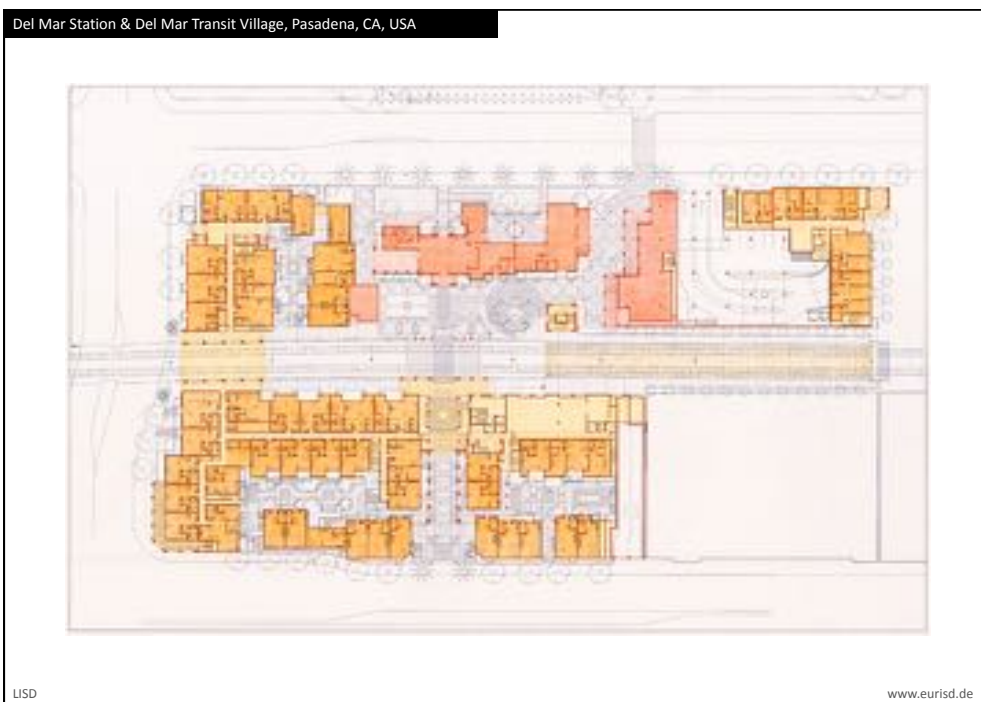
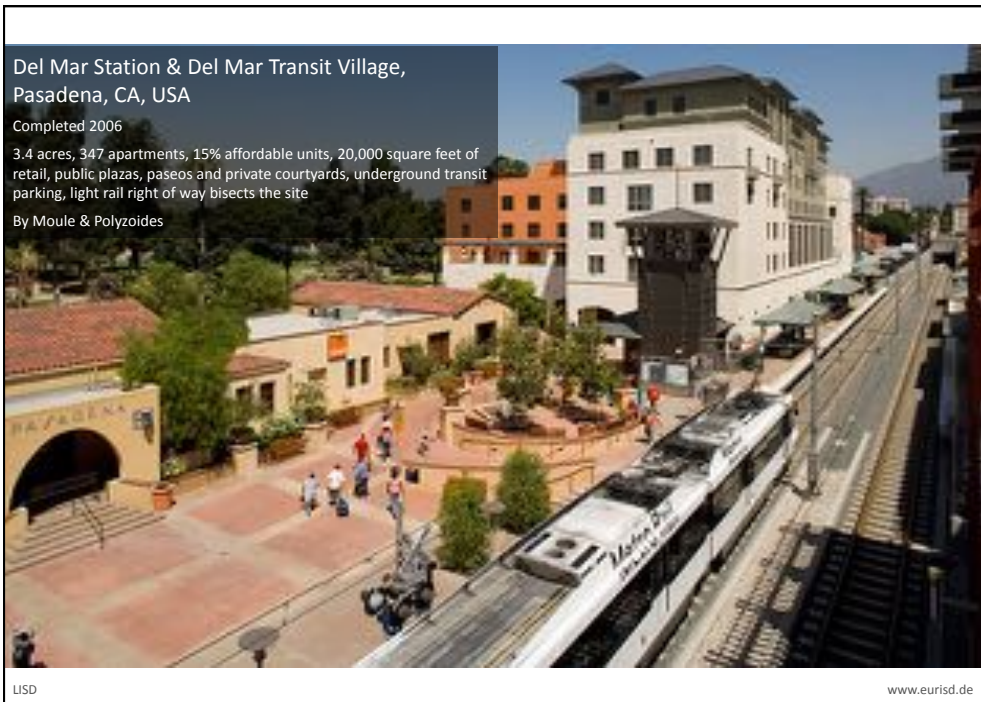


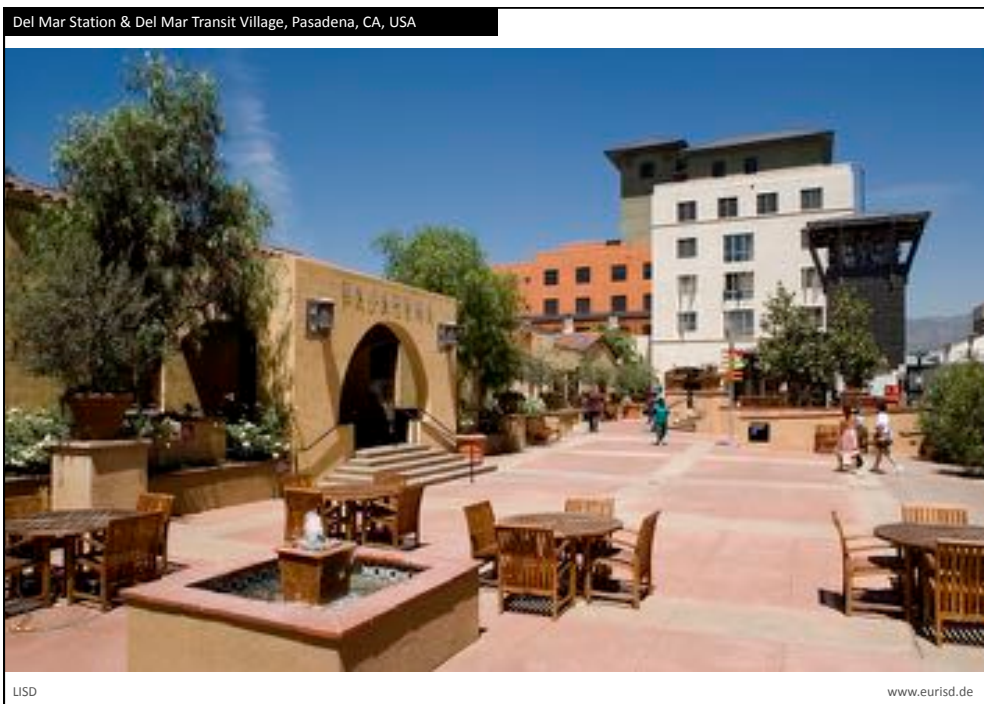
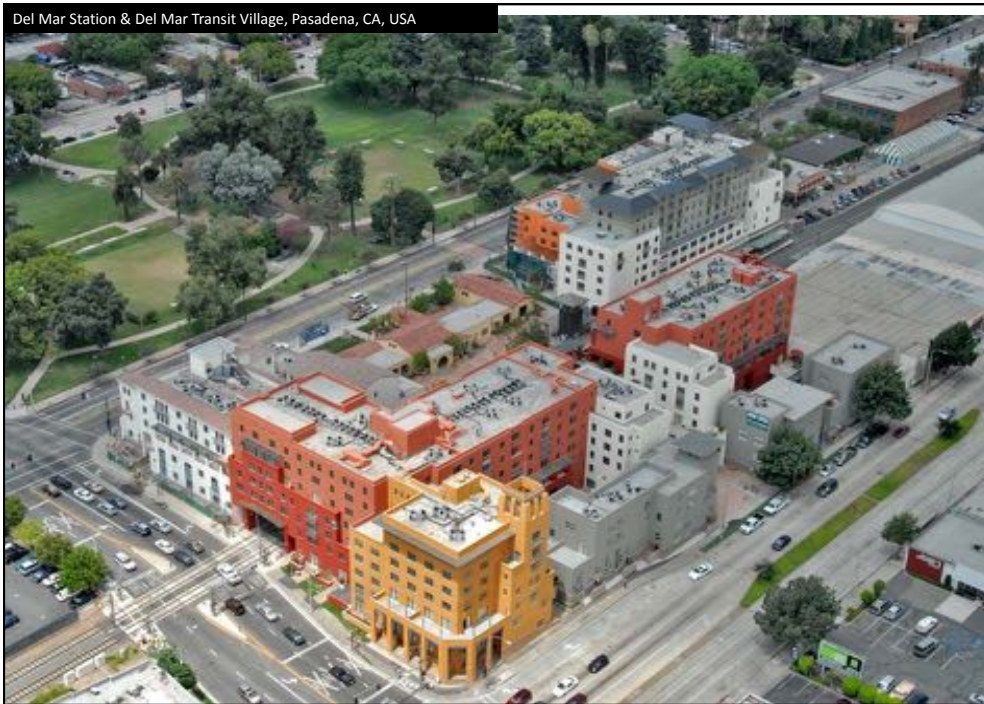






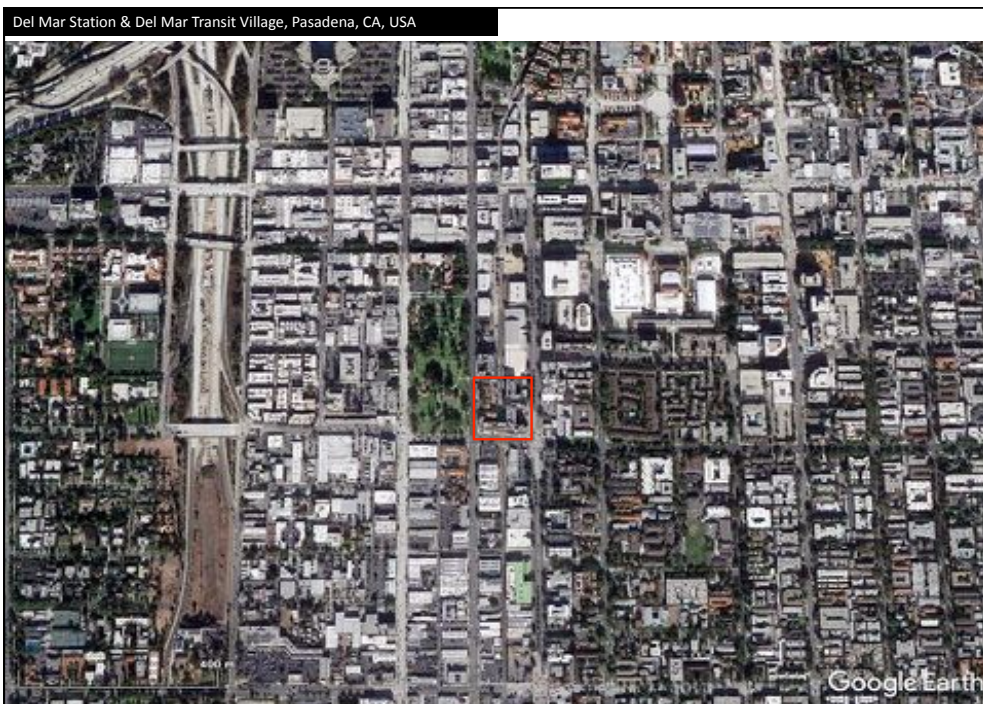
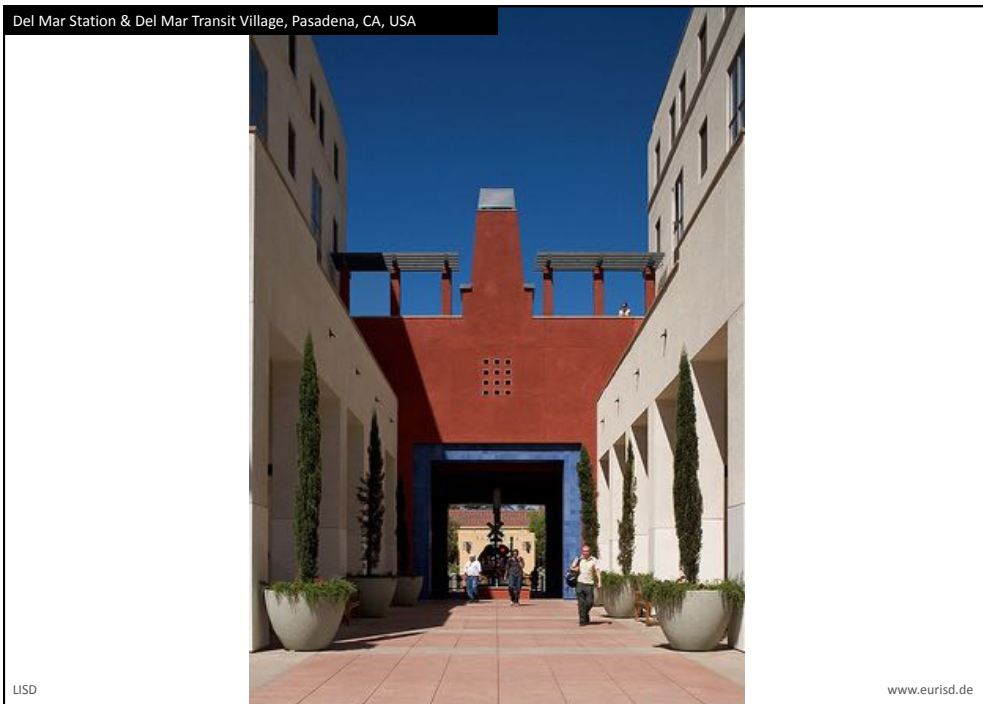
2 Build urban villages for sustainable transit

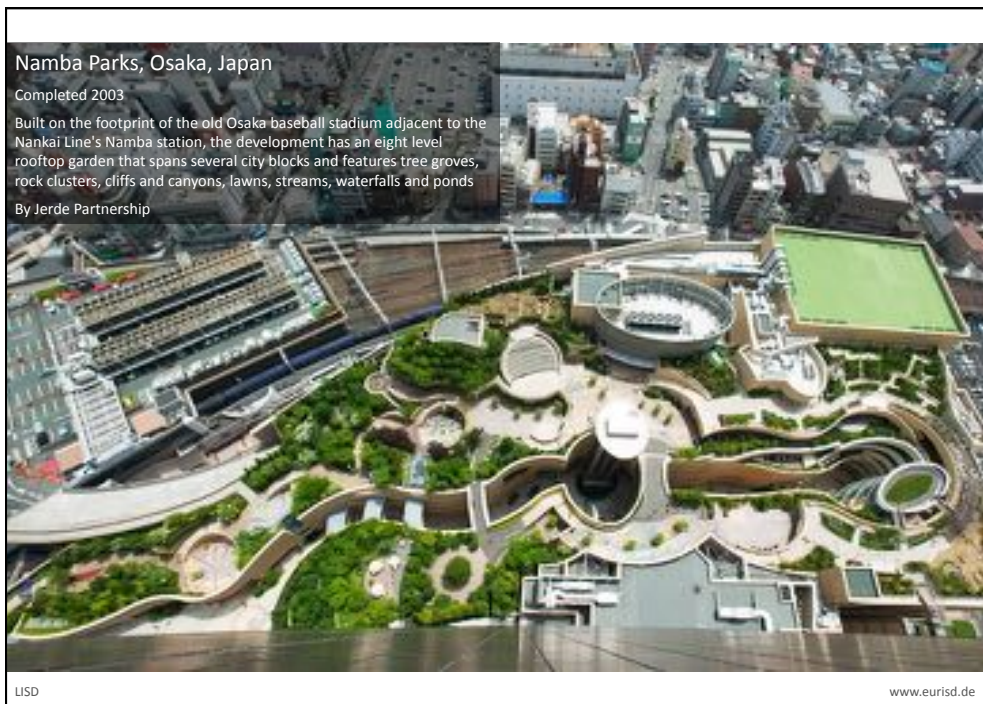


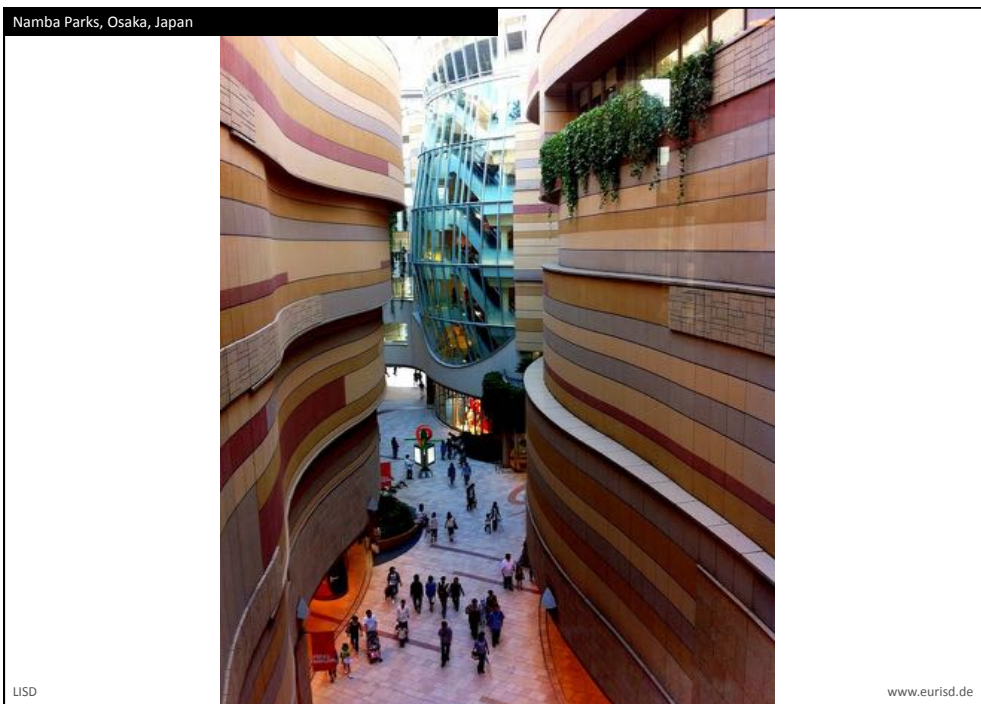
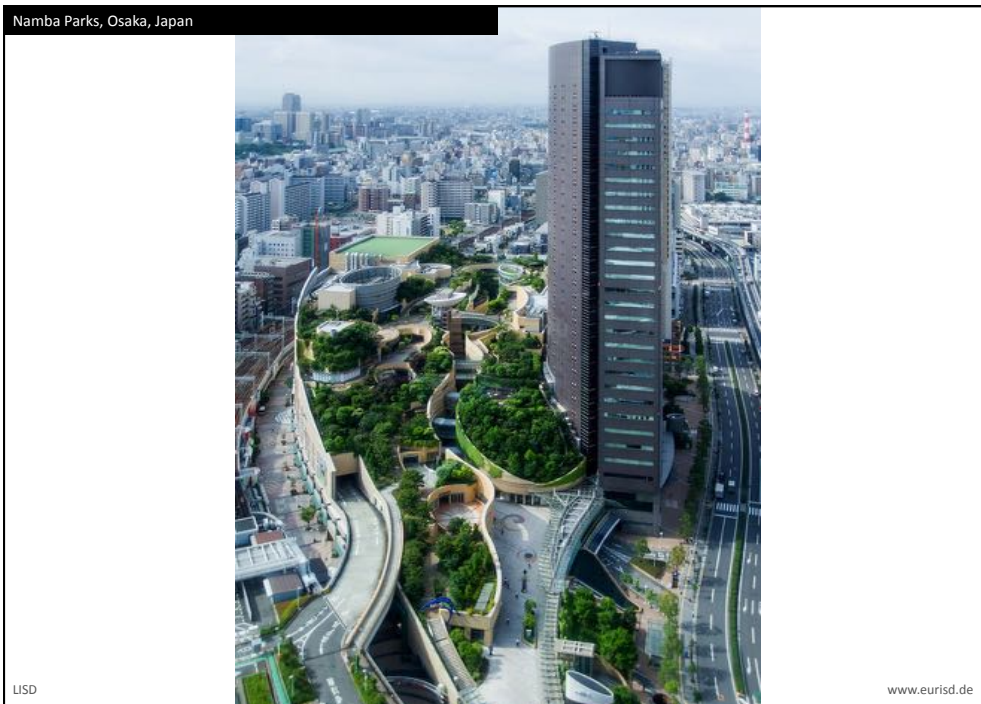


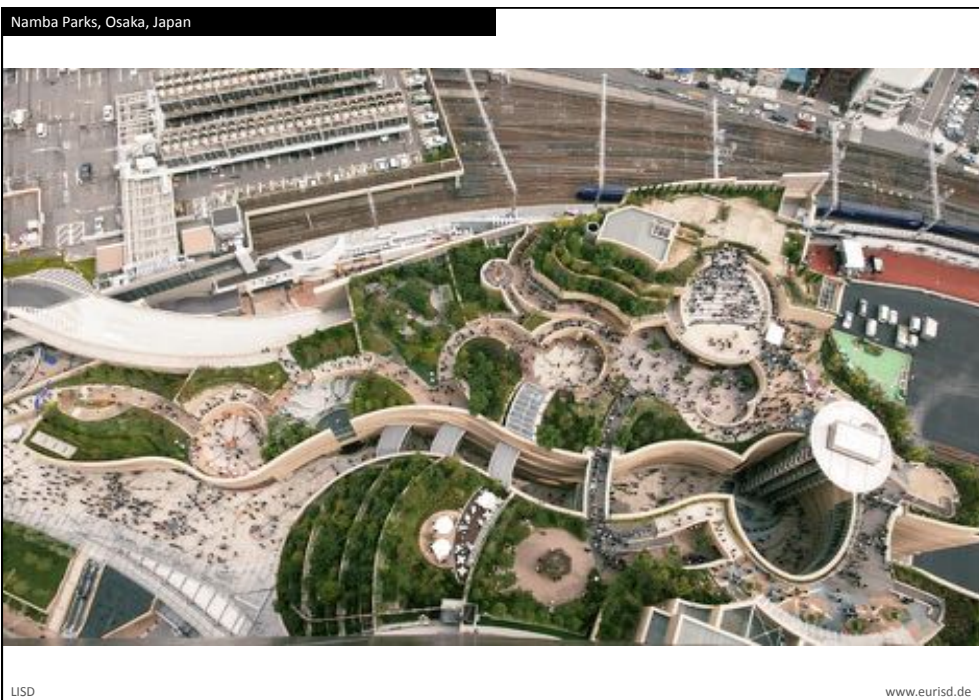










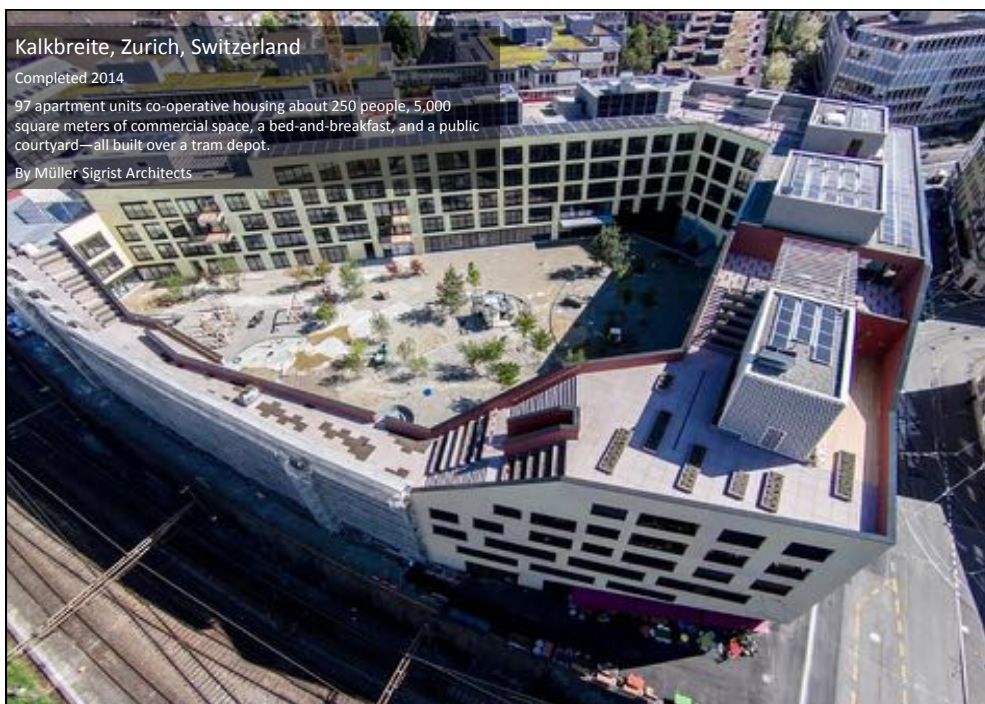


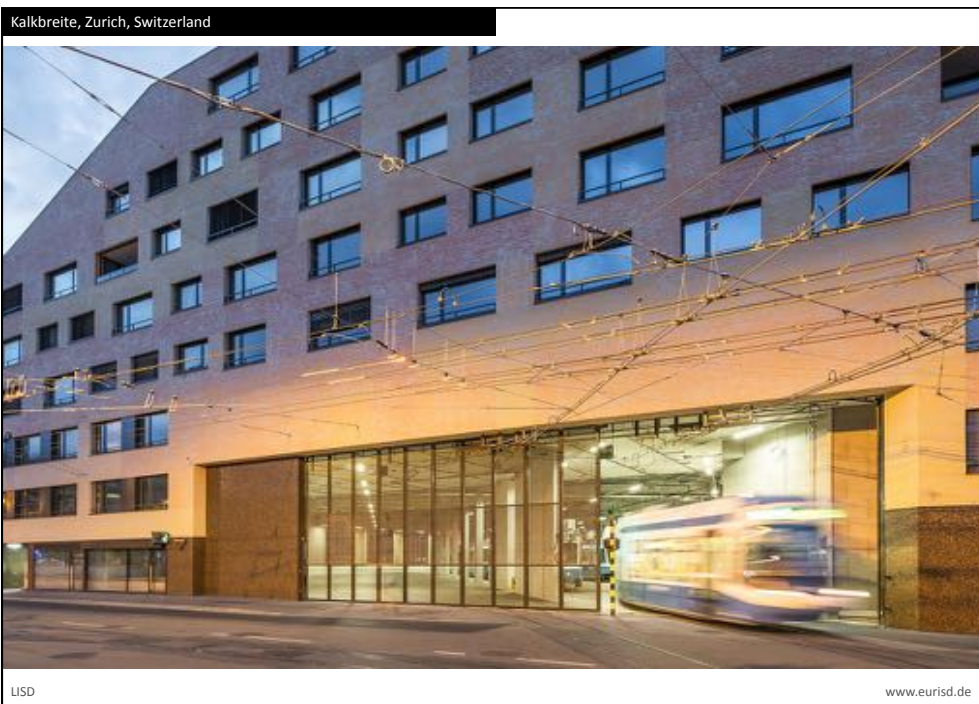


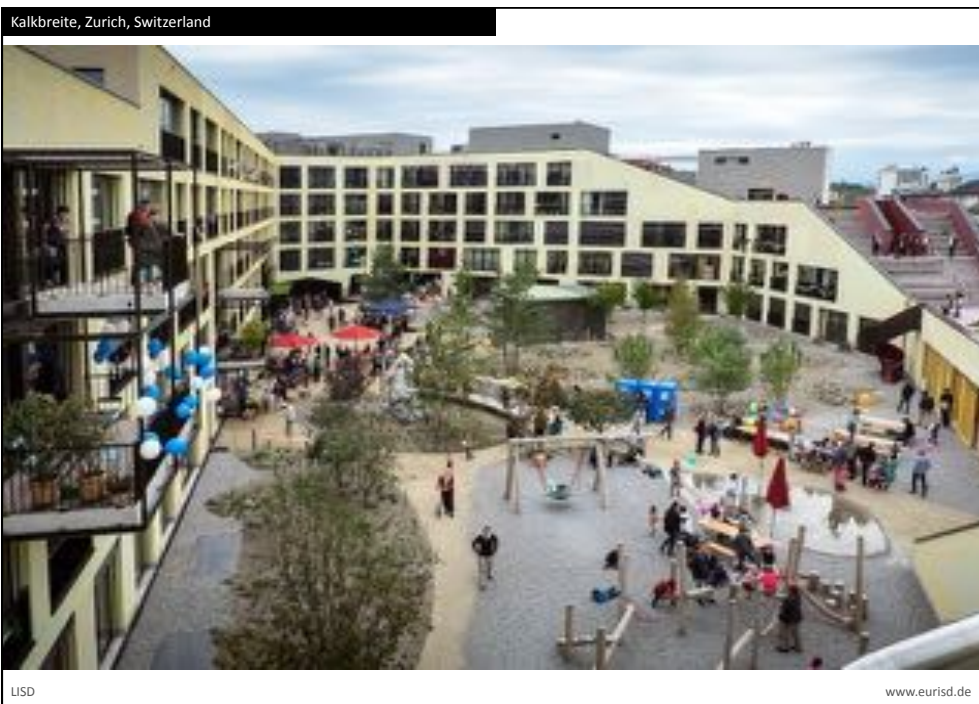
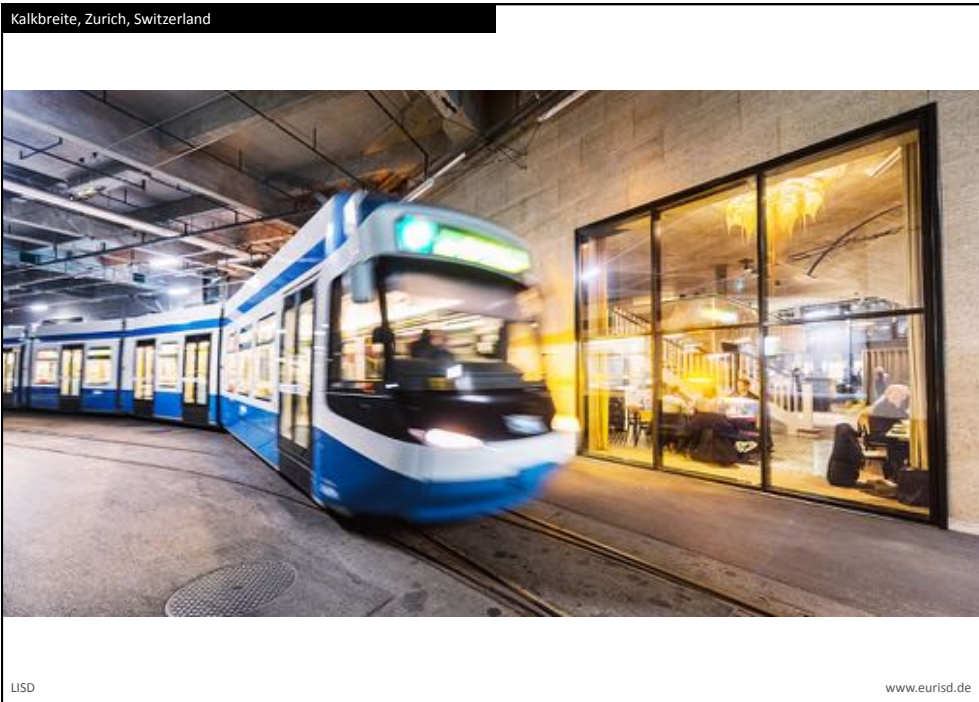
3 Plan for urban proximity

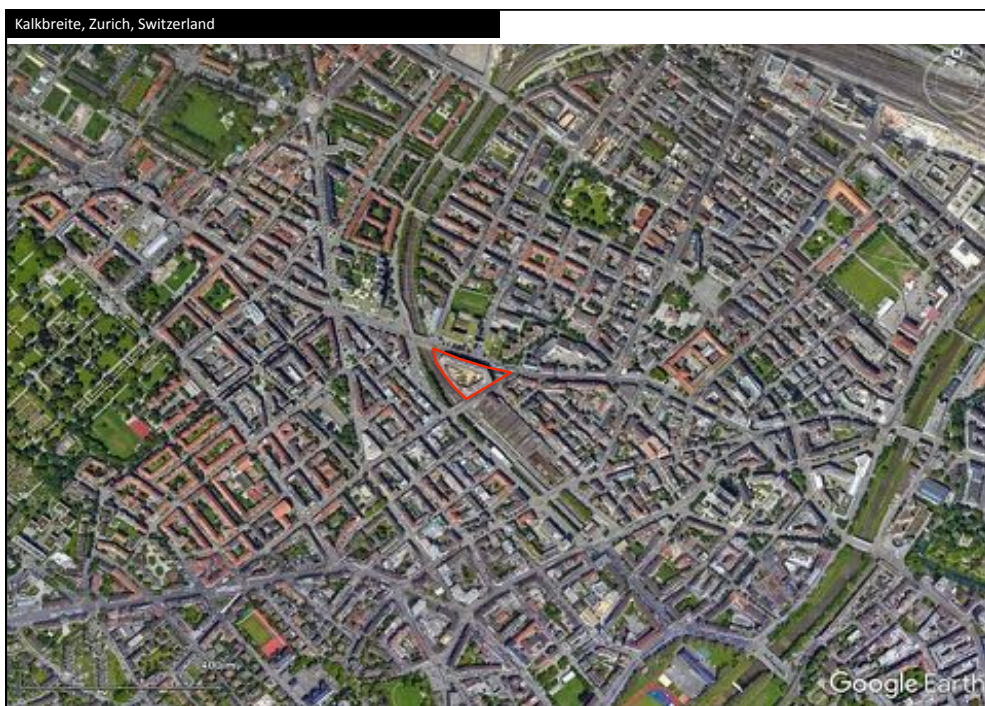
LISD

www.eurisd.de

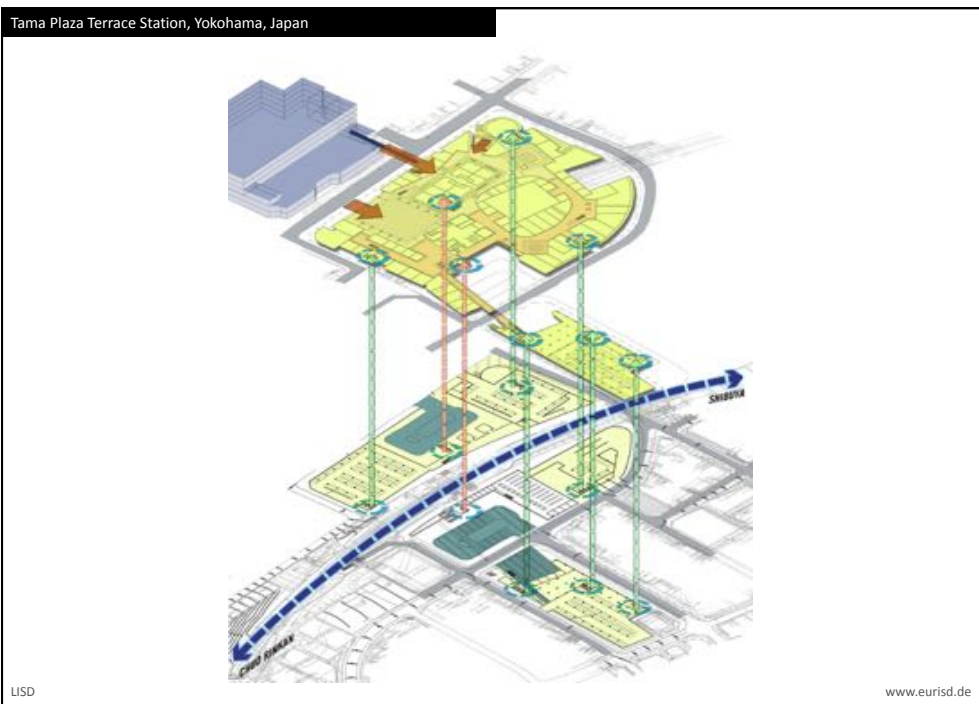


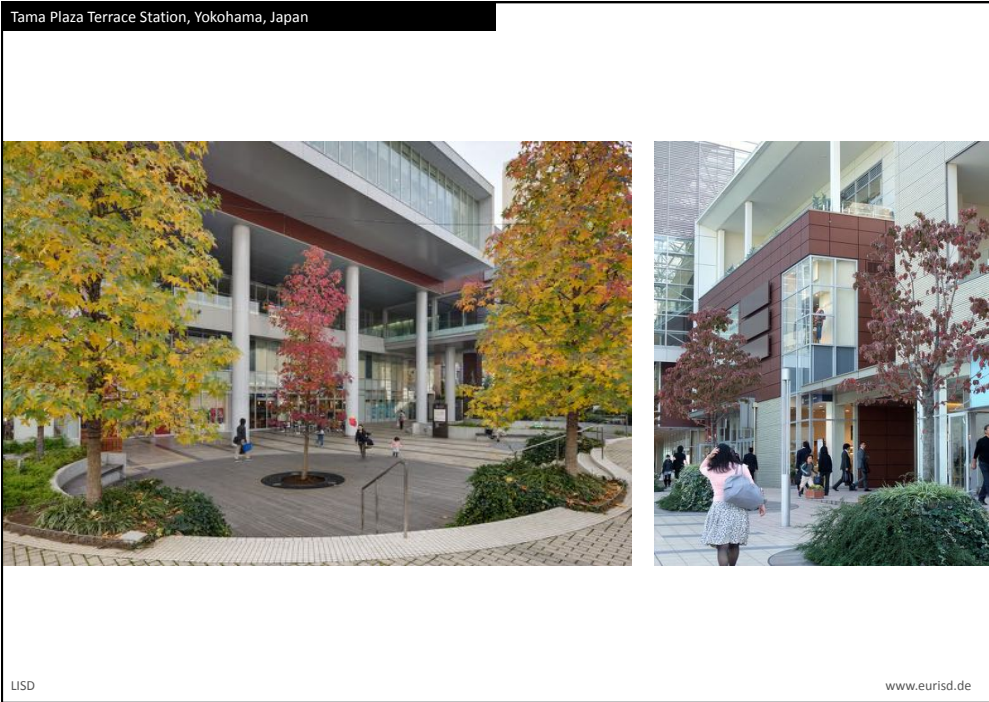














4 Expand the scope for public life

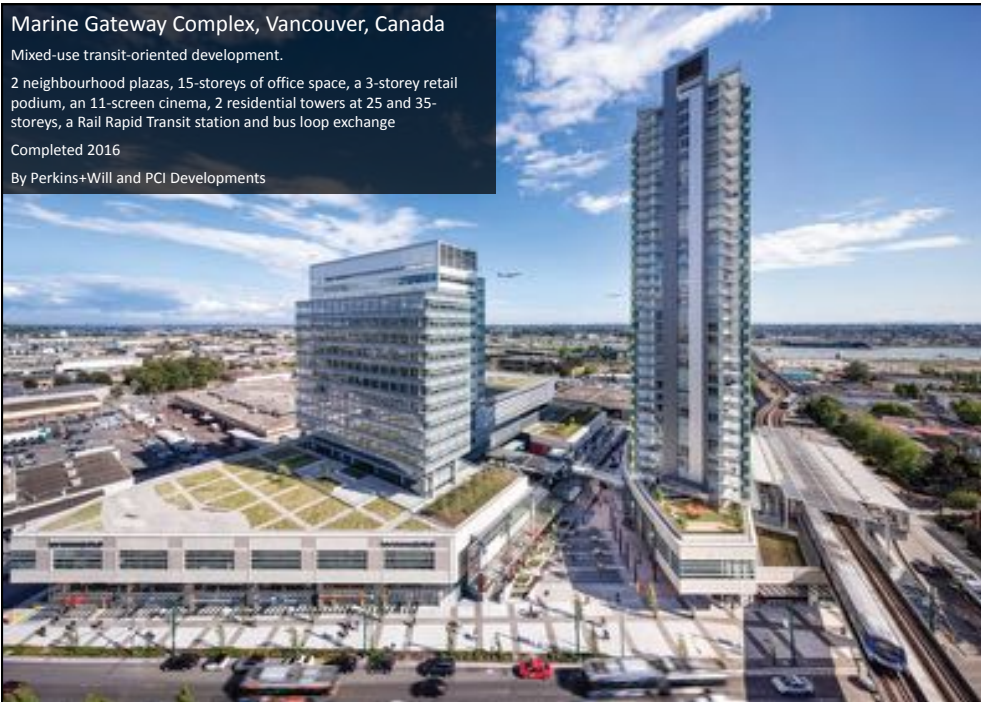
Marine Gateway Complex, Vancouver, Canada

Mixed-use transit-oriented development.

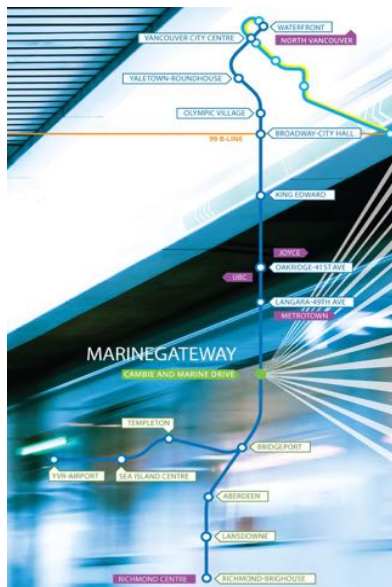
2 neighbourhood plazas, 15-storers of office space, a 3-storey retail podium, an 11-screen cinema, 2 residential towers at 25 and 35-storers, a Rail Rapid Transit station and bus loop exchange

Completed 2016

By Perkins+Will and PCI Developments

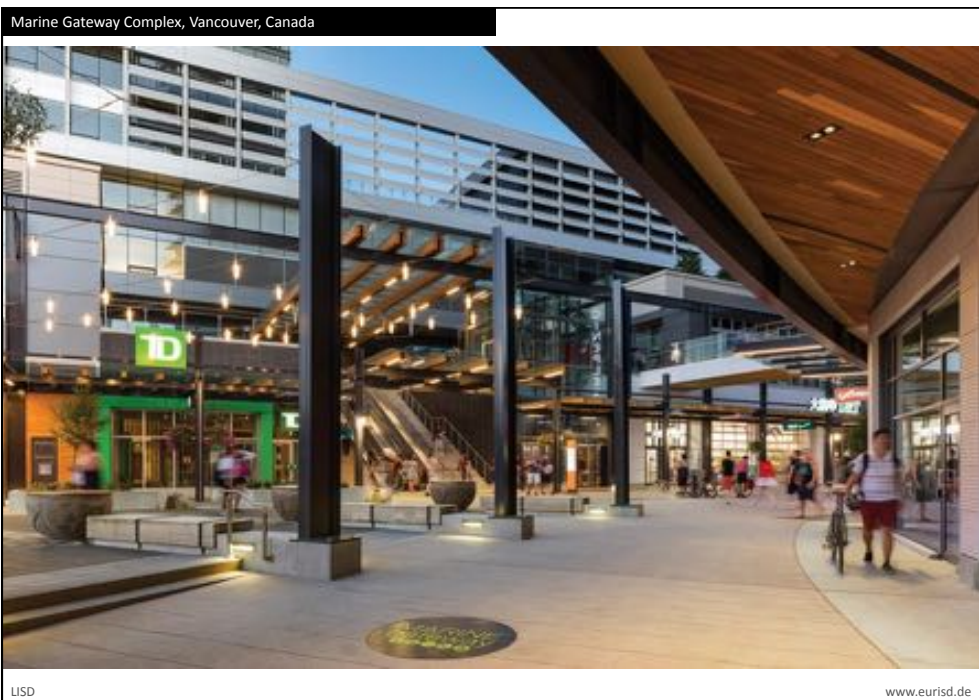
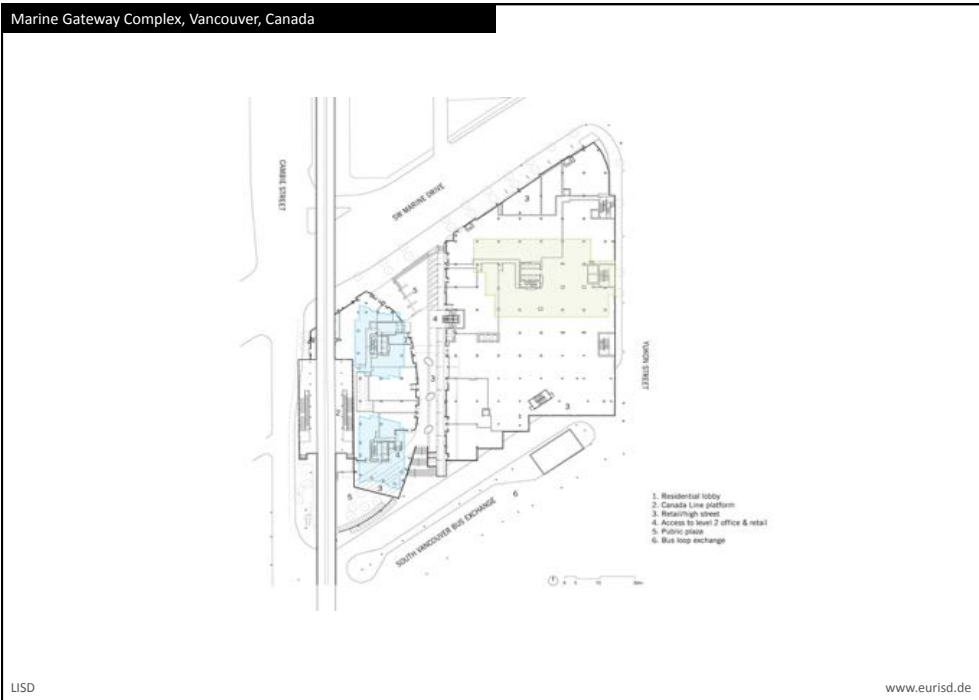


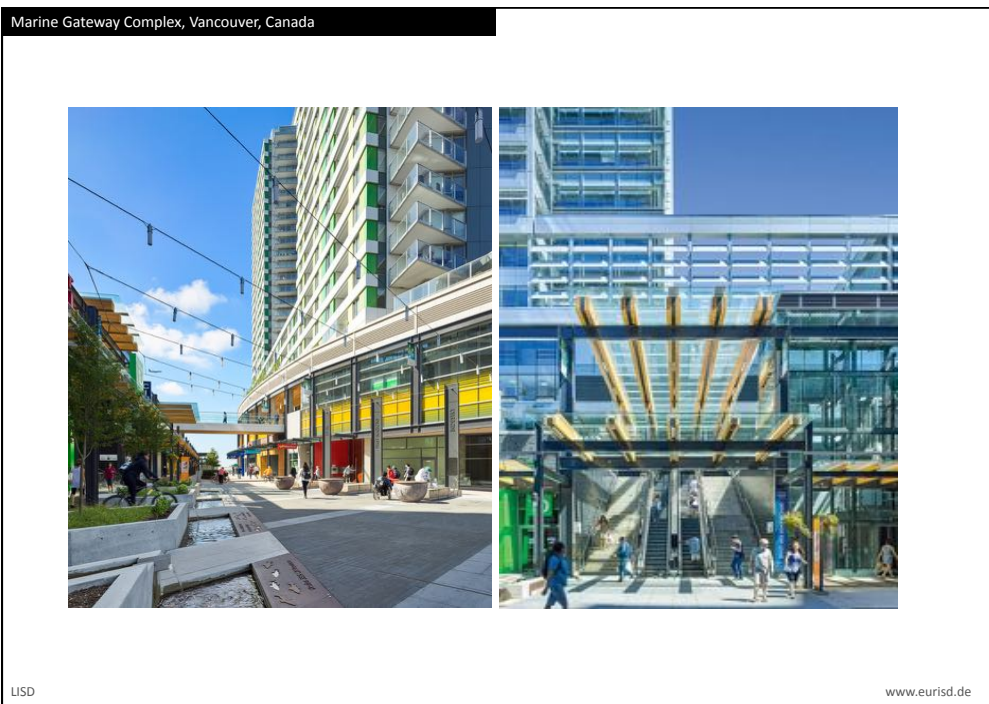
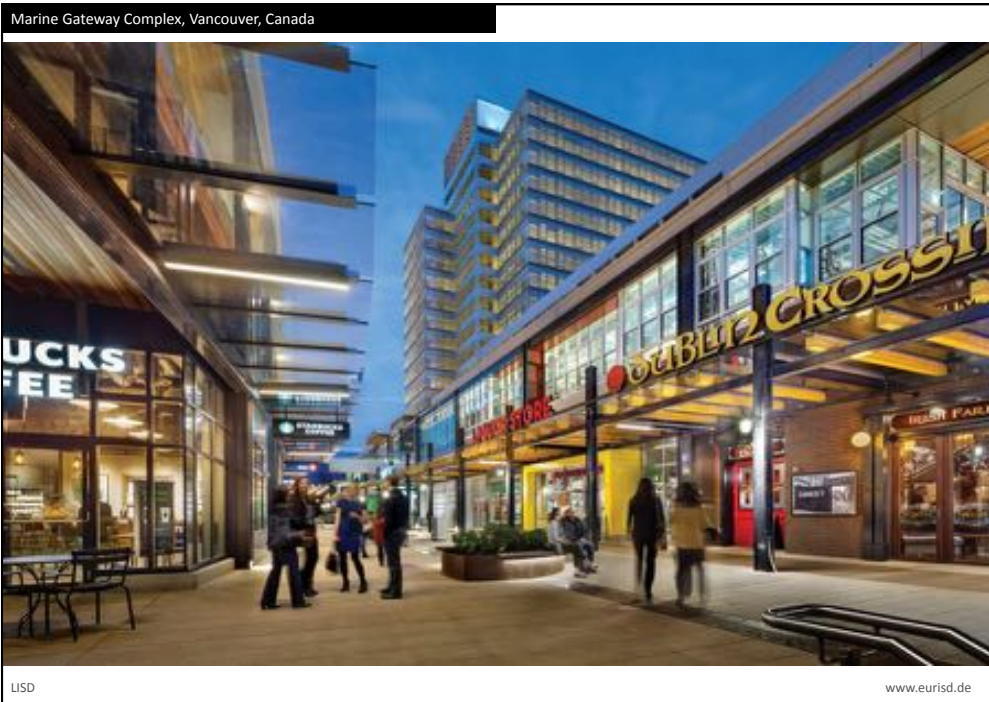
Marine Gateway Complex, Vancouver, Canada

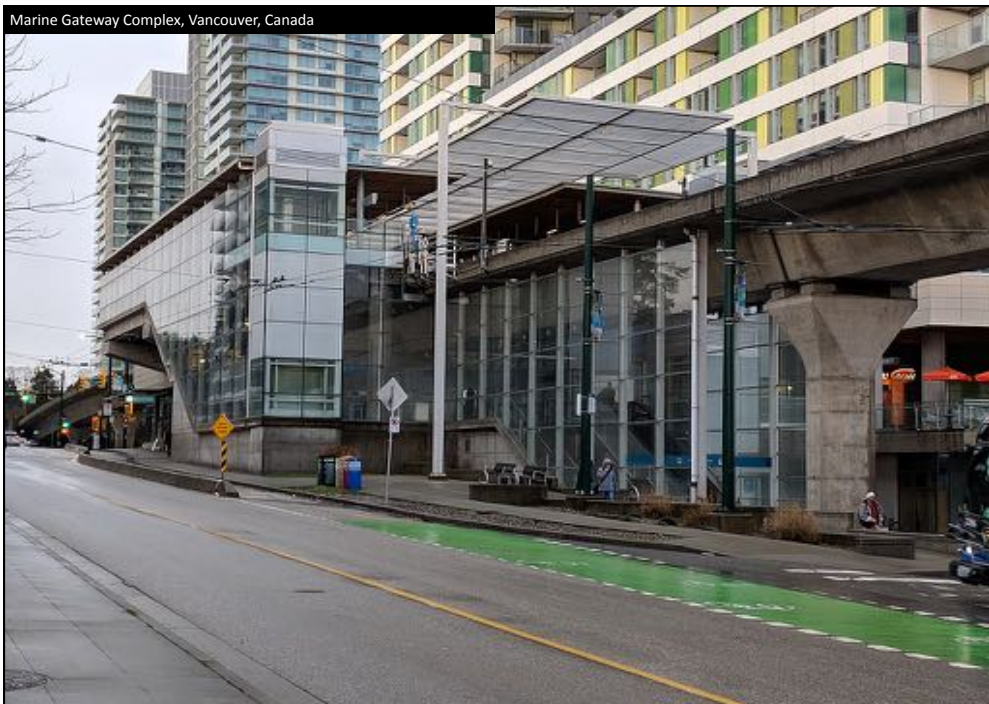


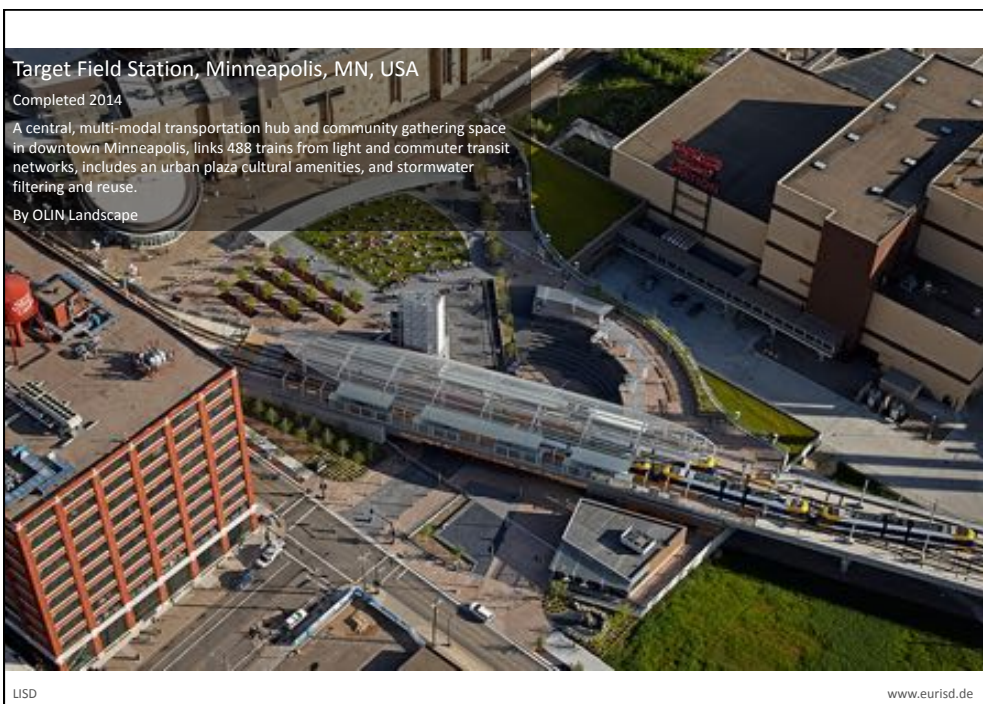
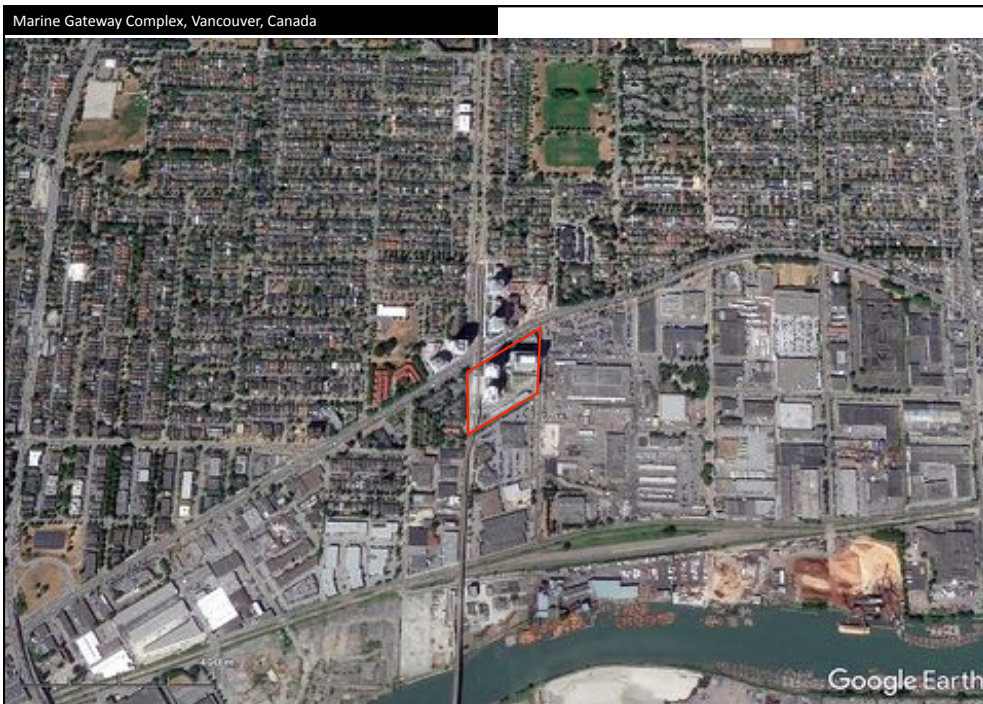
LSD

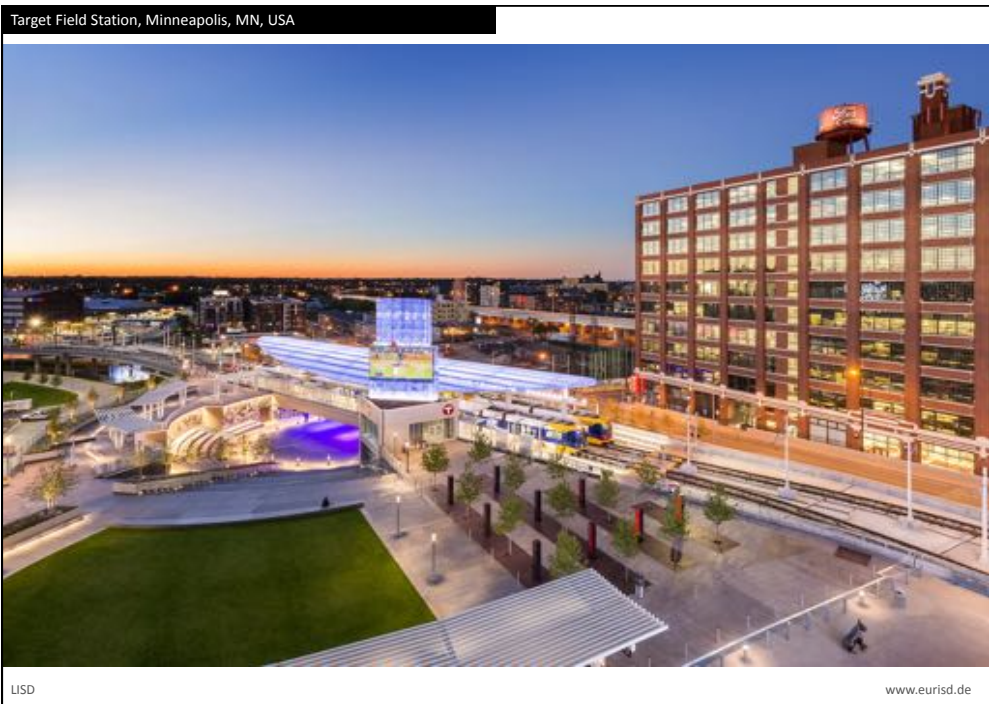
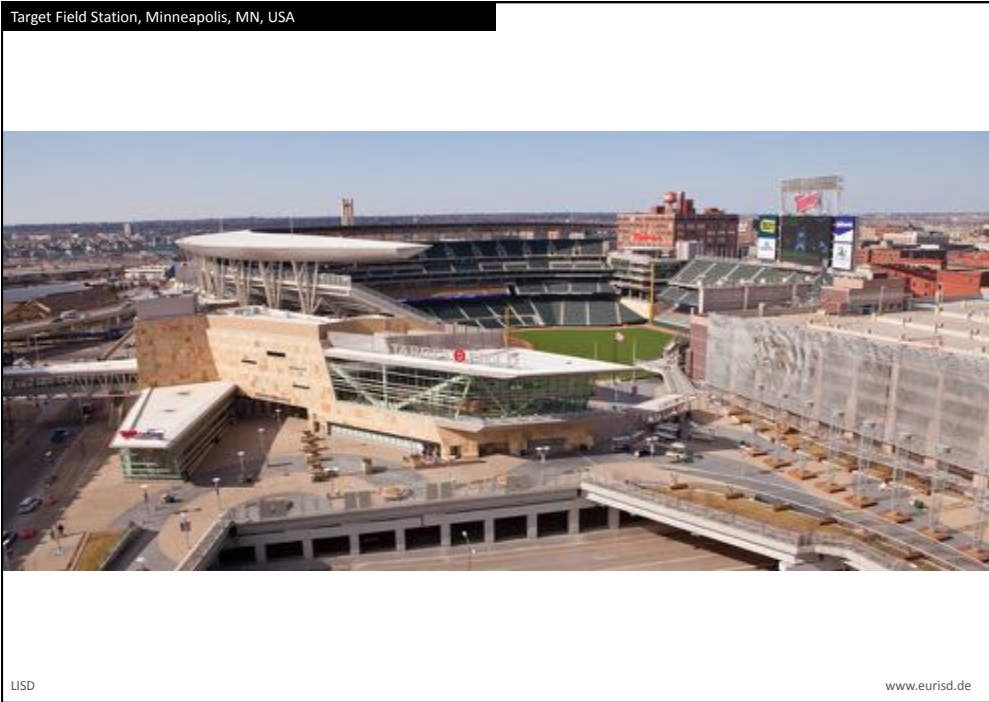
www.eurisd.de

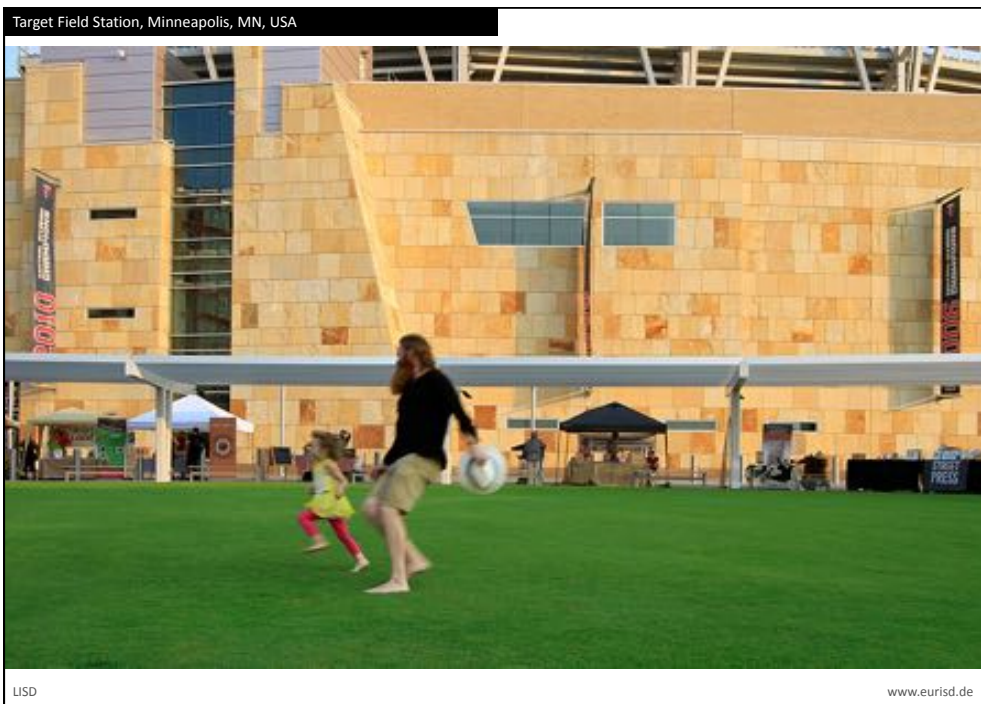
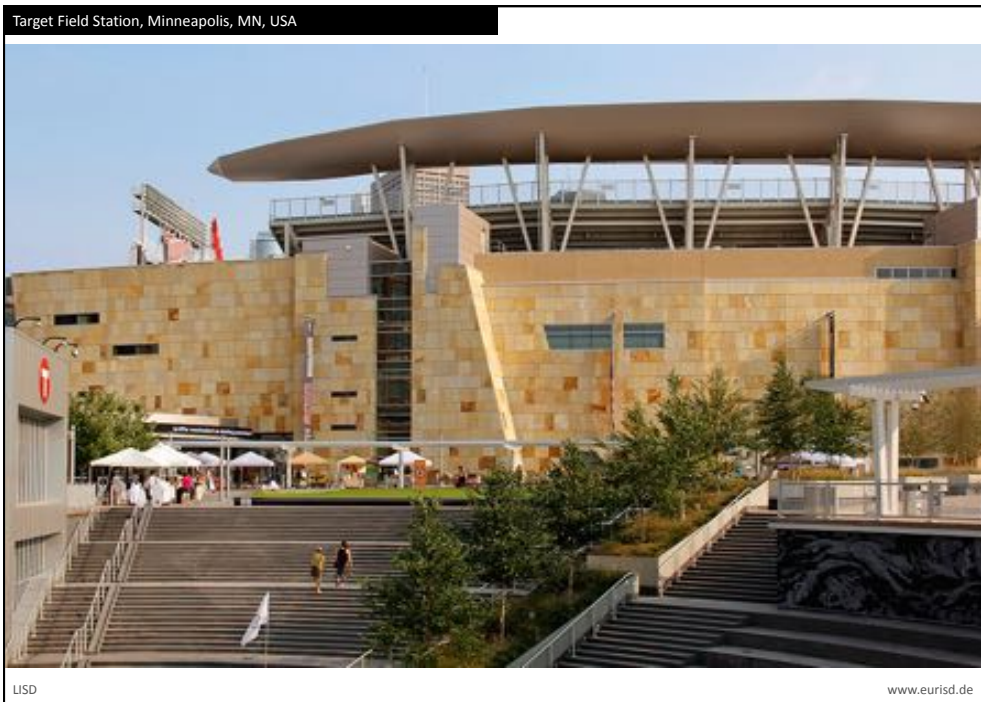


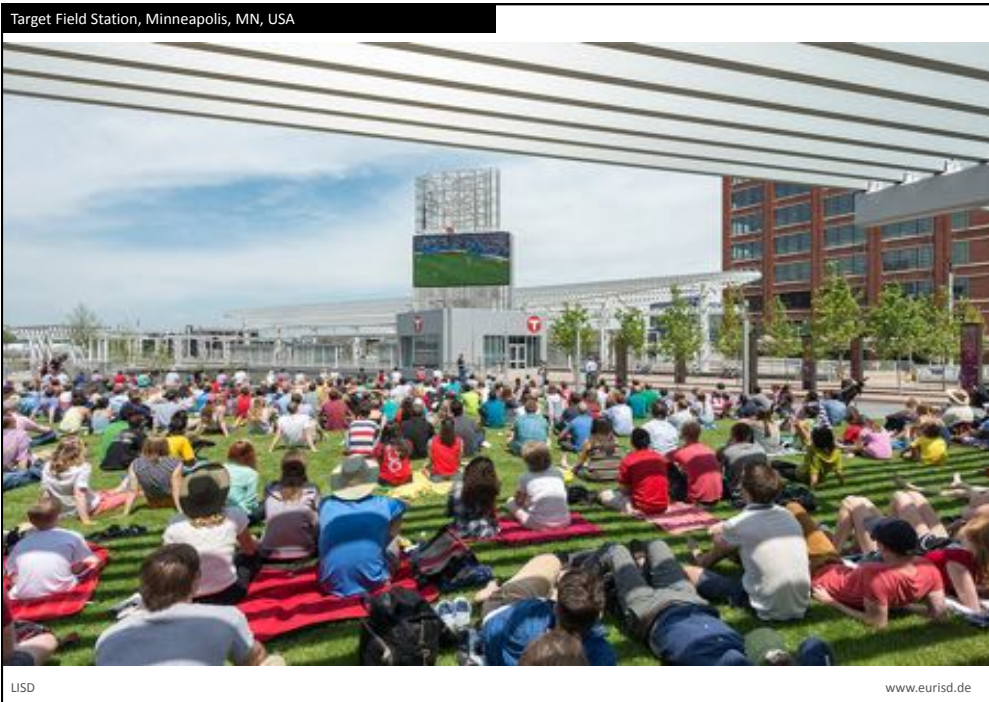








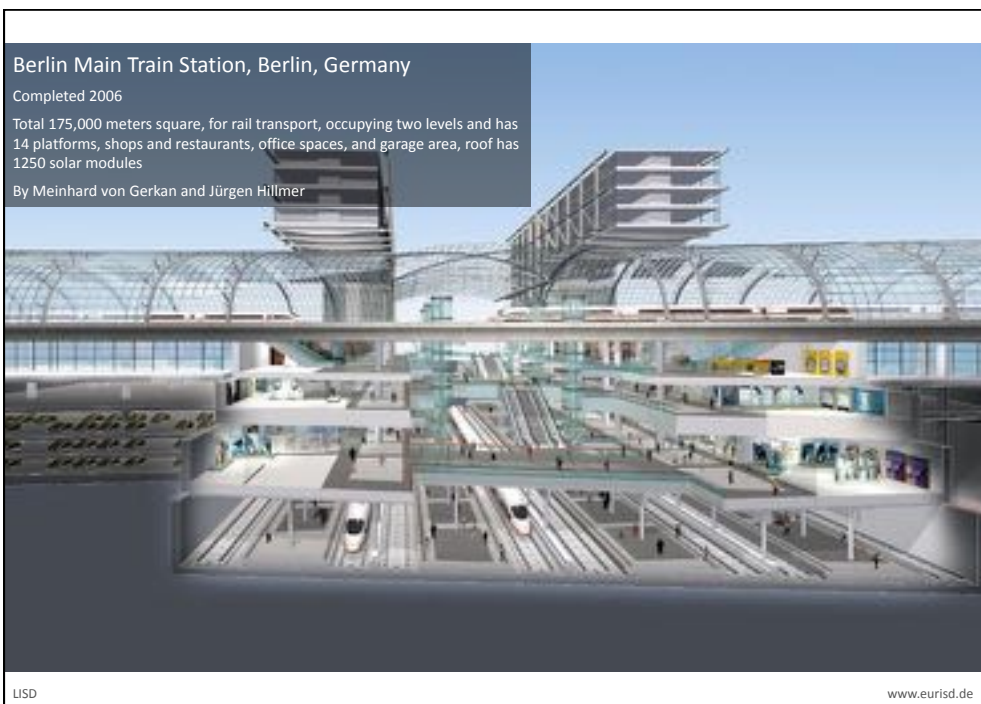


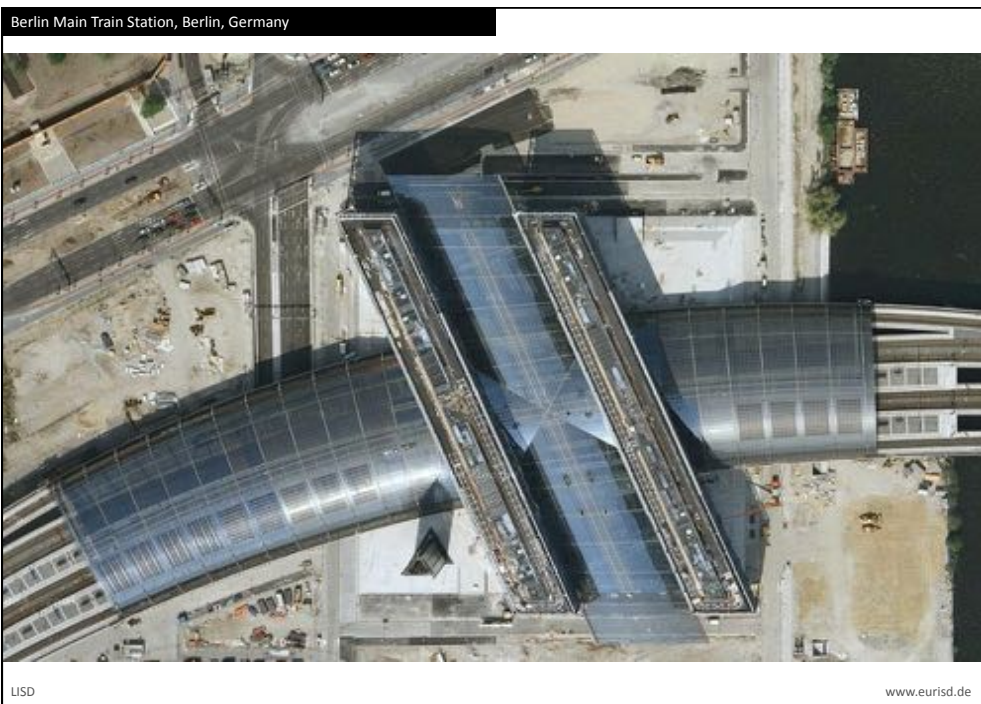


5 Transit hub as renewable power station

LSD

www.eurisd.de





Berlin Main Train Station, Berlin, Germany



LISD

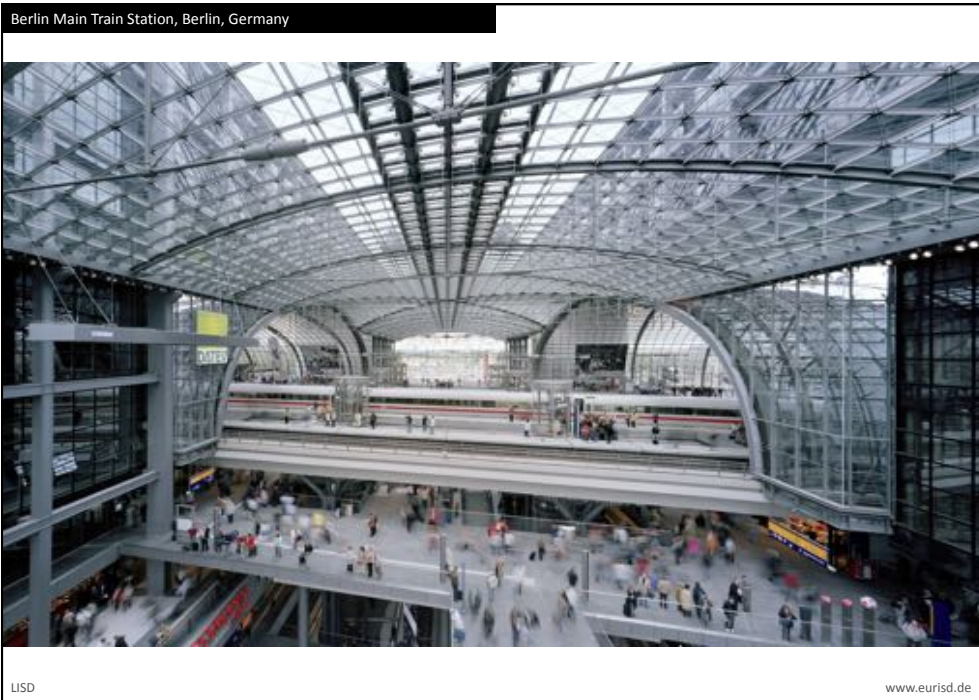
www.eurisd.de

Berlin Main Train Station, Berlin, Germany

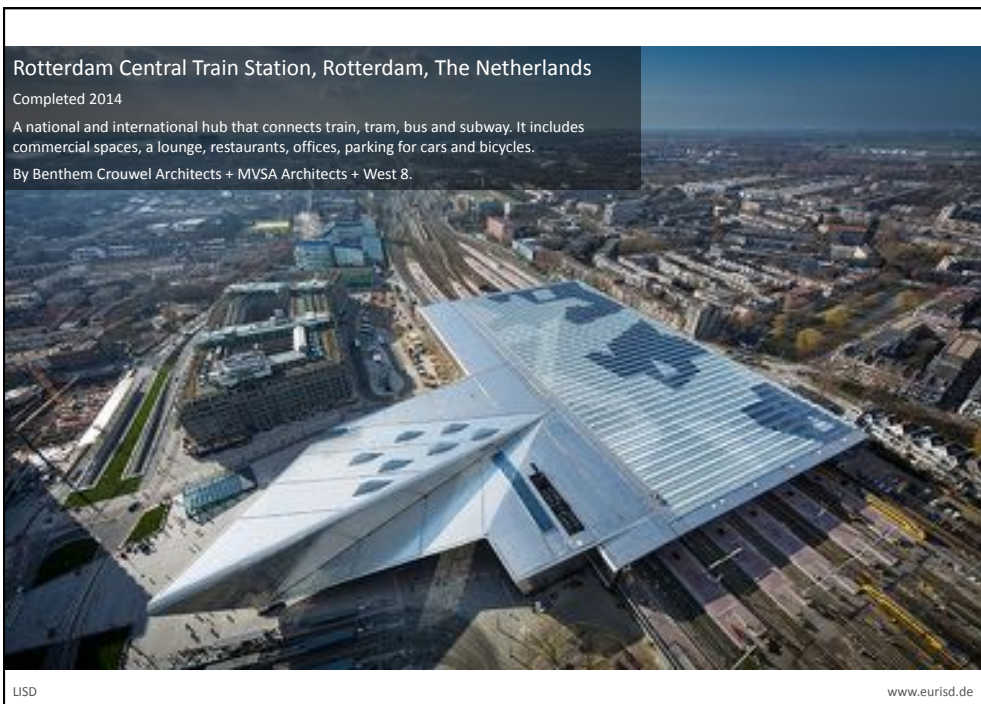


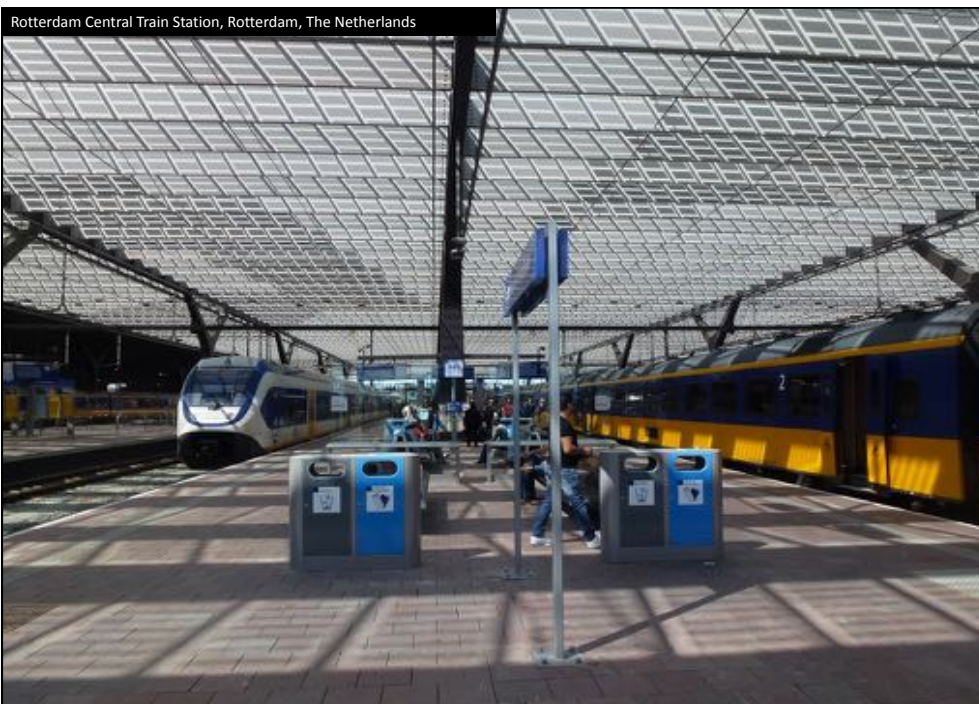
LISD

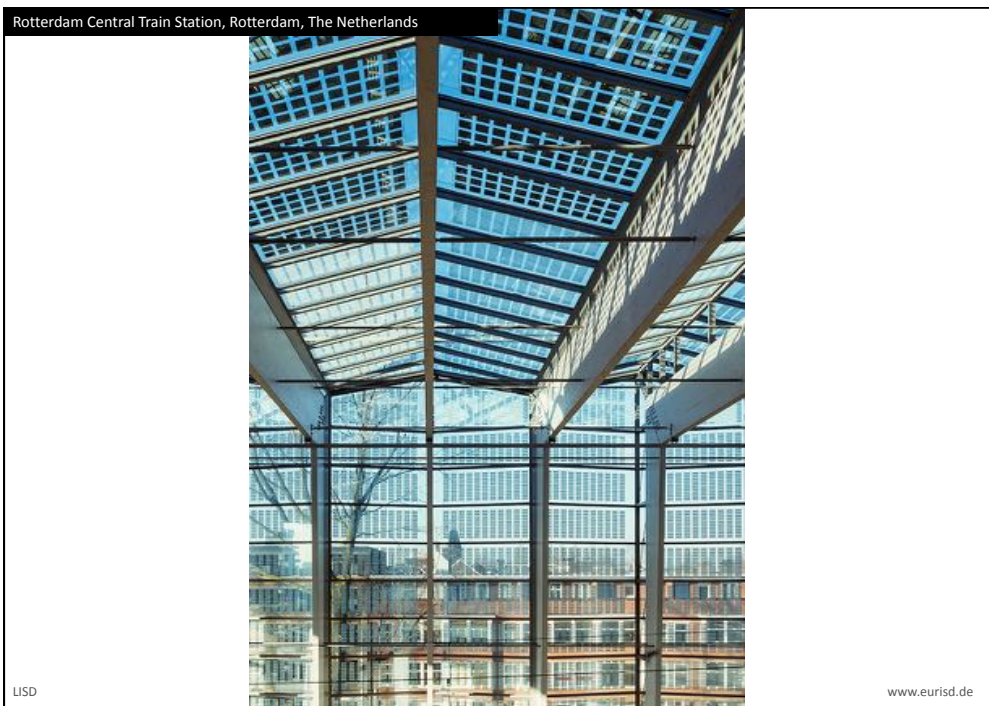
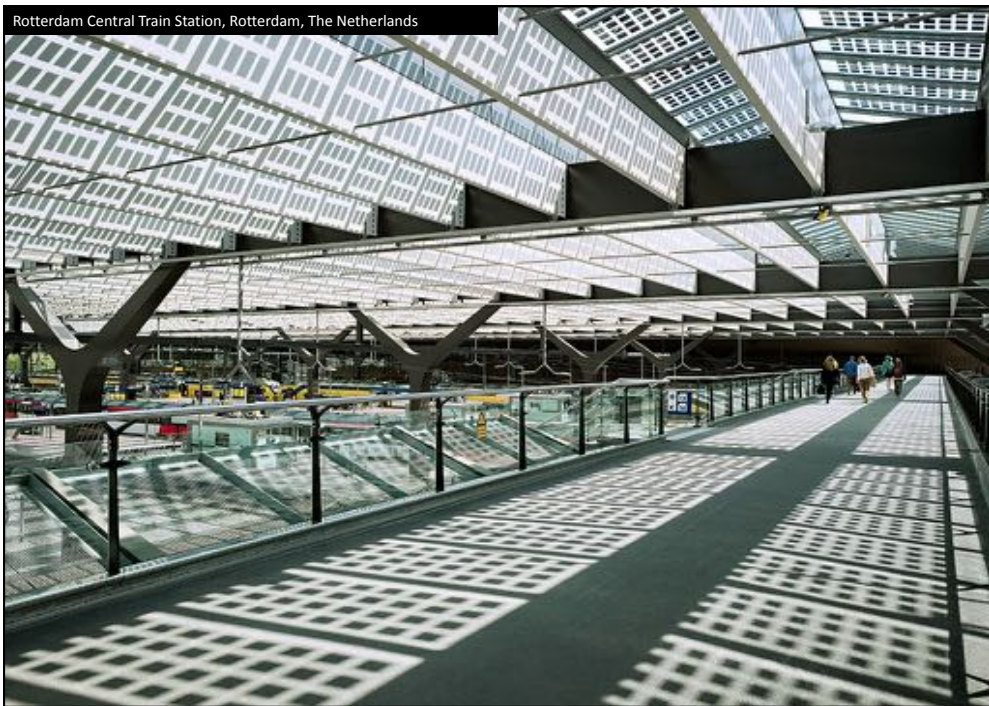
www.eurisd.de





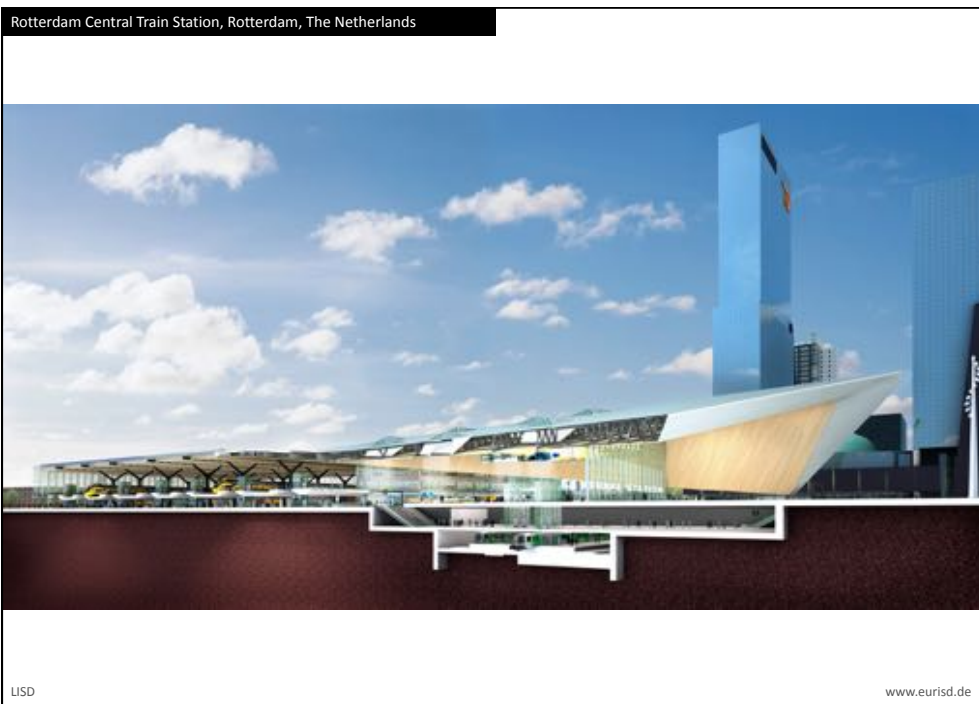
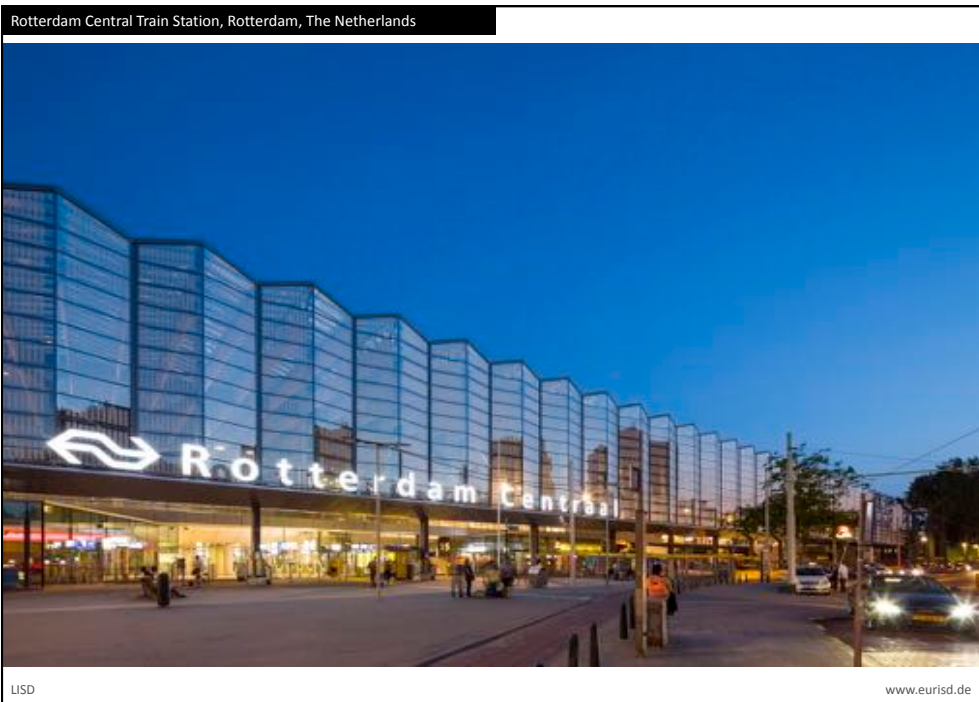


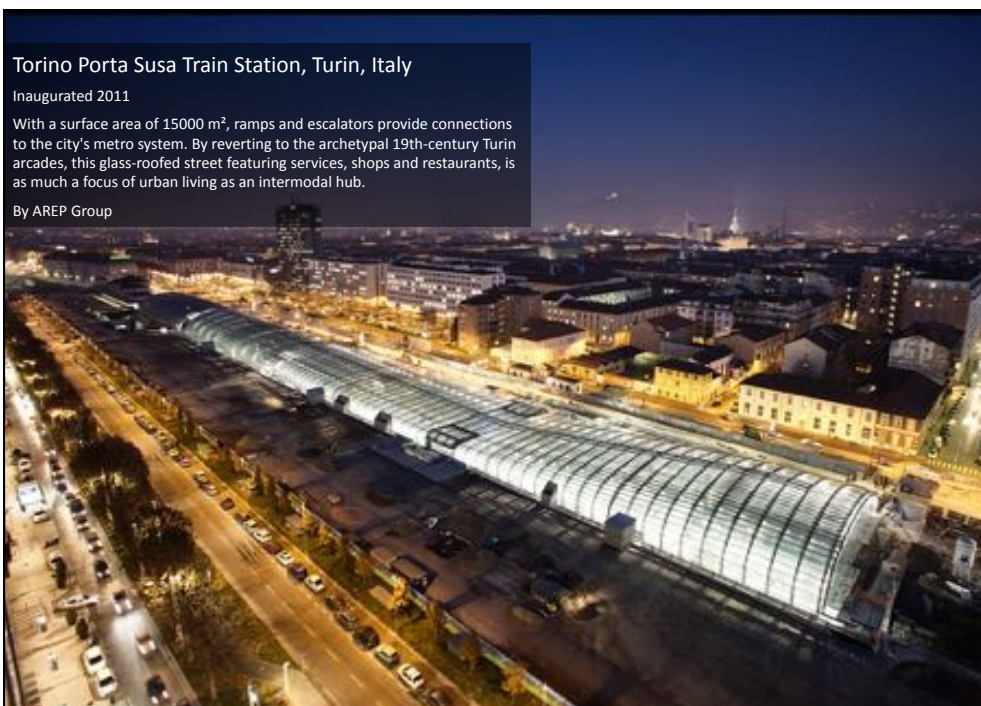
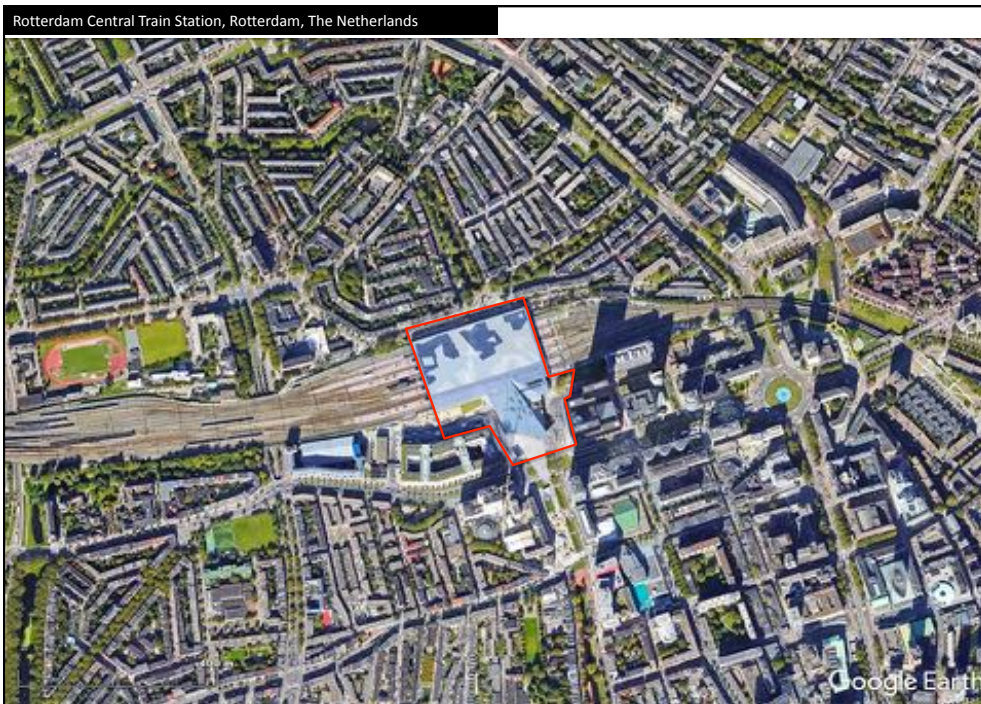


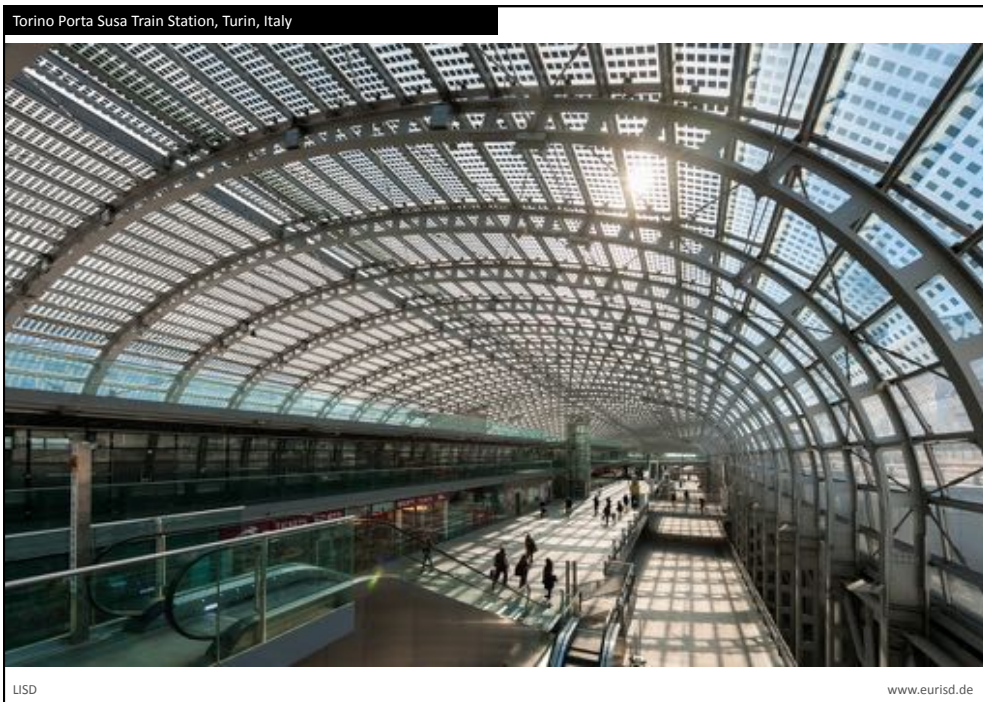


LSD

www.eurisd.de

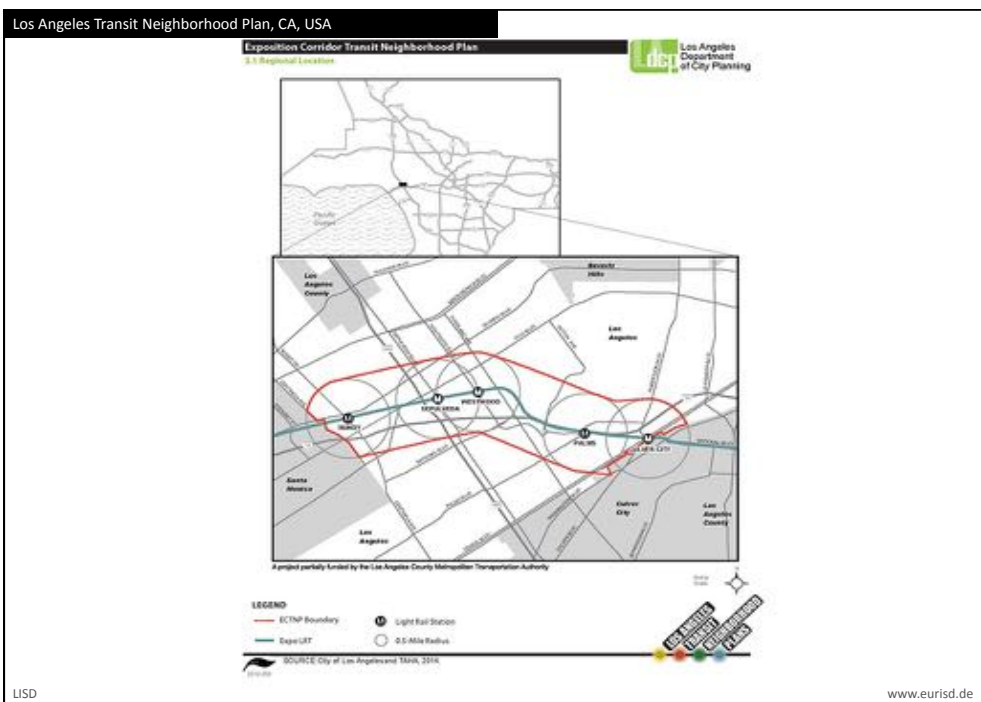
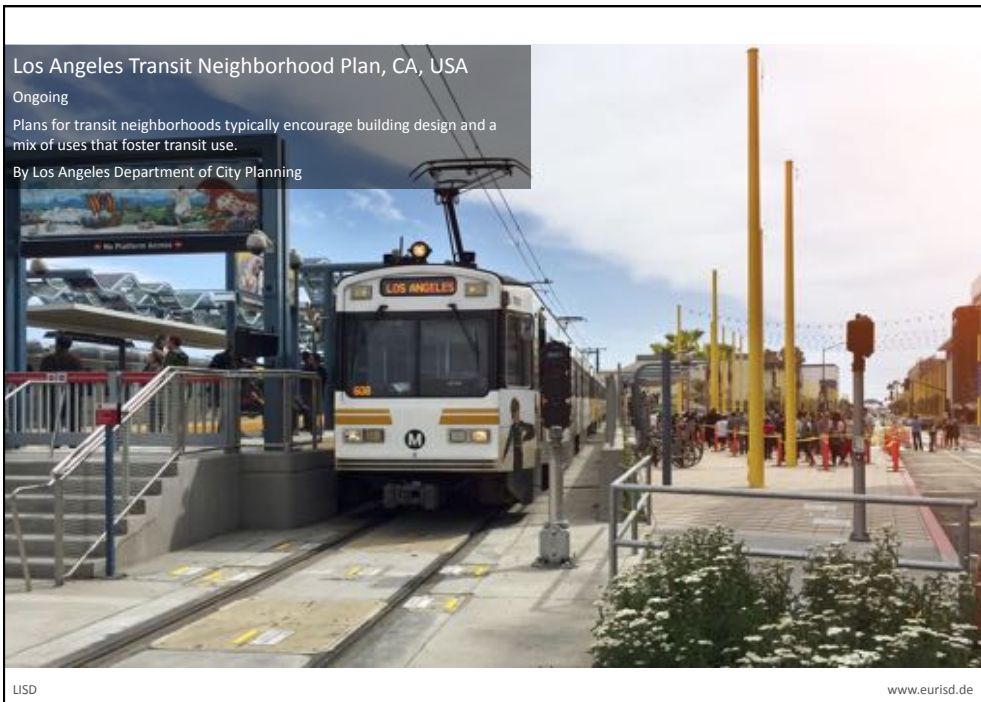


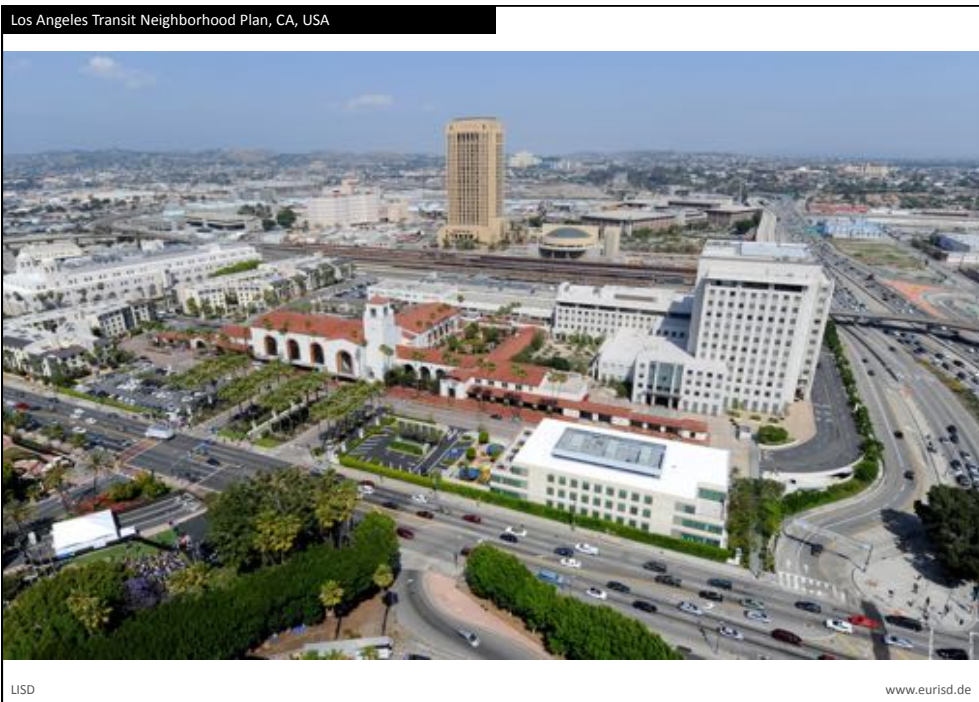
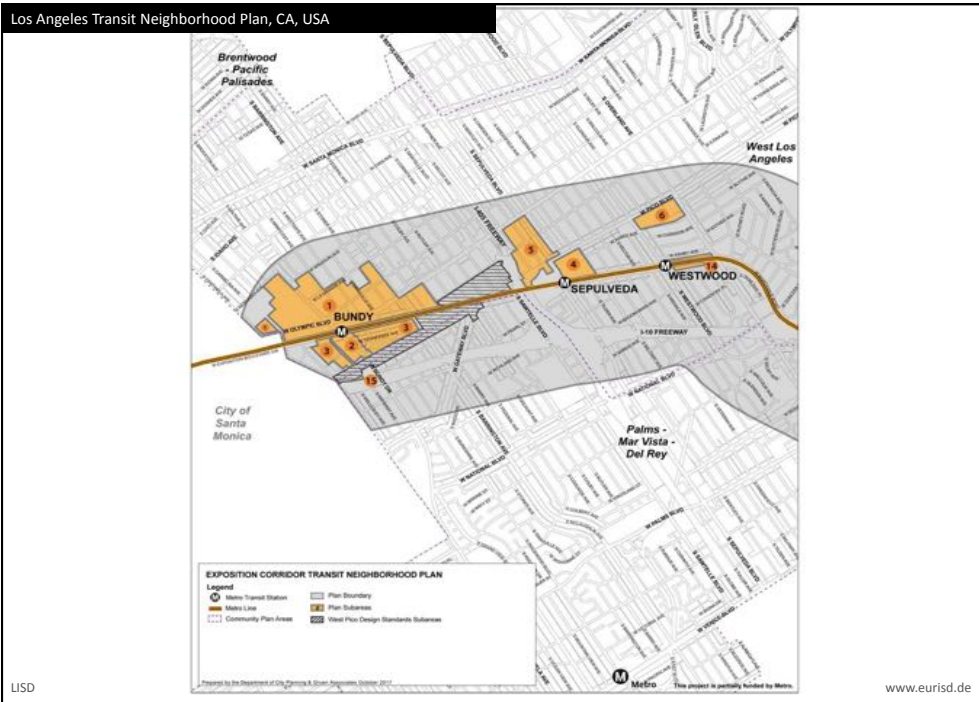


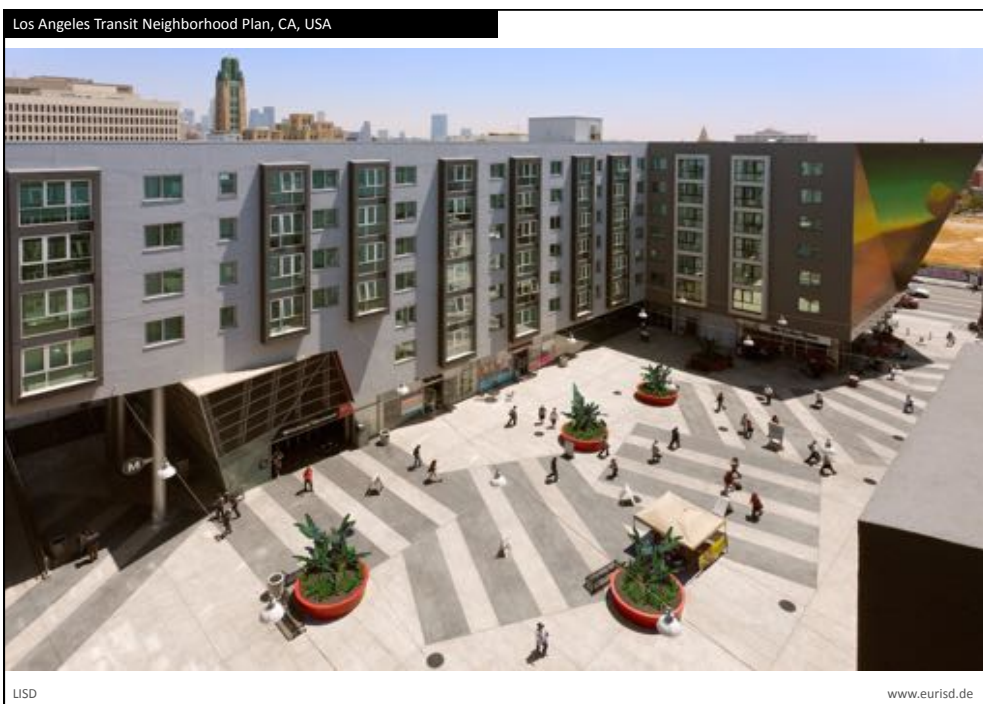


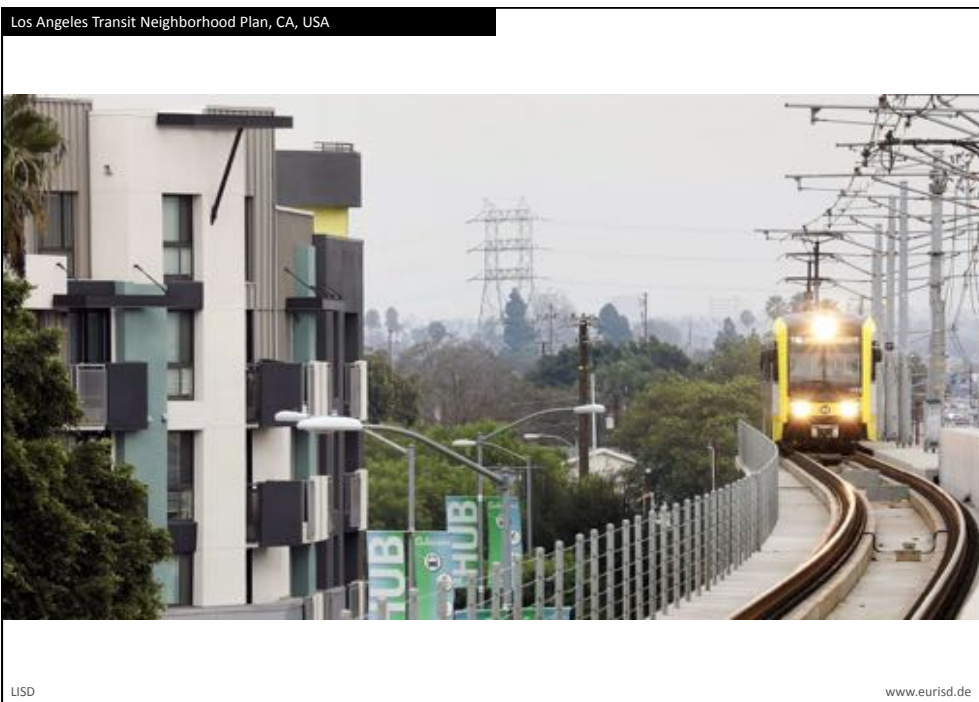
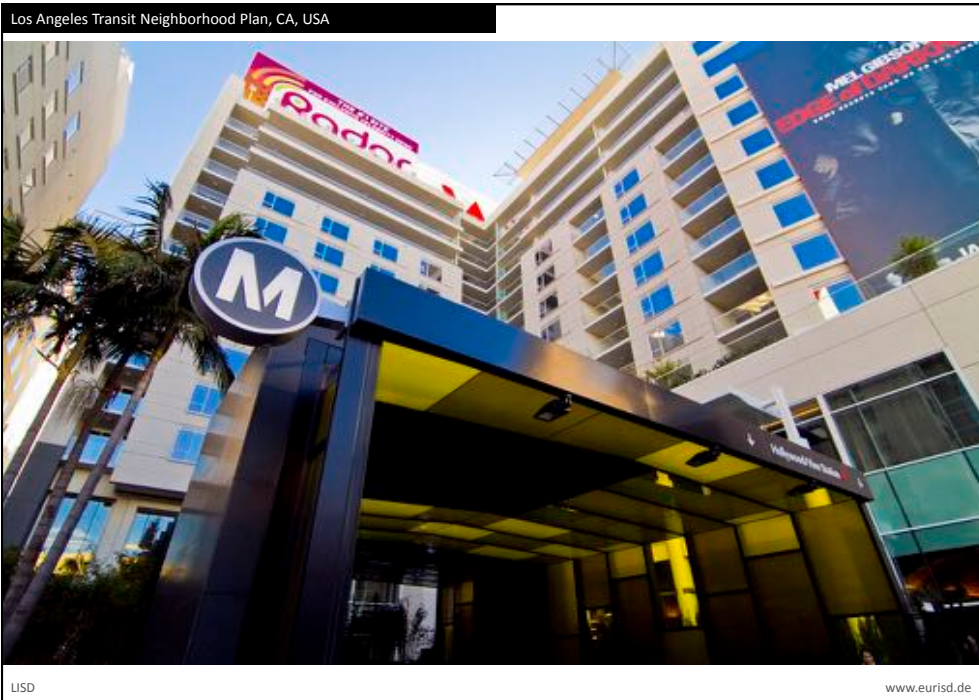


6 Transit for urban regeneration









Autonomous Rapid Transit (ART), Zhuzhou, China
and worldwide roll-out

CRRC Zhuzhou Institute released 2017



LSD

www.eurisd.de

Trackless Tram ART System, Zhuhou, Hunan Province, China



LSD

www.eurisd.de

Mi Teleférico La Paz, Bolivia
Ongoing since 2014
Going beyond linking El Alto and La Paz, micro-retrfits for cable infrastructure transform the space-time reality of the Bolivian capital, and encourage better amenities and use efficiencies throughout the city.
By Municipal Government of La Paz / Doppelmayr Cable Systems, Austria



LSD www.eurisd.de

Mi Teleférico La Paz–El Alto, Bolivia



LSD www.eurisd.de







USD

www.eurisd.de

www.eurisd.de

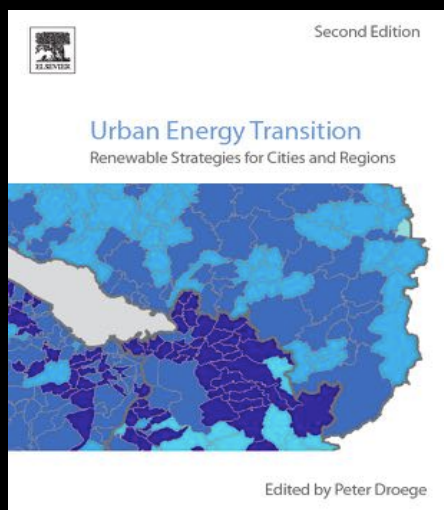
designing sustainable infrastructure

Email Professor Peter Droege
pdroege@eurisd.de

Copyright 2018 LISD and sources. All rights reserved.

LISD

www.eurisd.de



Urban Energy Transition
Renewable Strategies for Cities and Regions
UET2.com

LISD

www.eurisd.de