

# 12th Regional 3R and Circular Economy Forum in Asia and the Pacific

## Circular Economy and Plastics Waste



**Amitesh Deo**

Founder and Director of Pacific Recycling Foundation (PRF)

Director CEO of Waste Recyclers Fiji Ltd (WRFL)

Secretariate of the Pacific Recycling Alliance (PRA)

**Beneath the Paradise**  
**Pacific Waste Management Crisis**



# ABOUT US



**Our  
People**



**Our  
Environment**



**Our  
Commitment**



# WRFL & PRF –WHAT WE DO?



Activism arm - provide advocacy, awareness, and training on best practices of recycling.



Provide structured support to individuals engaged in informal collection of recyclables (particularly women and LGBTQI+ community Collection Pillars of Recycling or CPR)



Vision to reduce recyclables to landfill & dumpsites



Increases recycling participation and collection



Recycling Industry with 30+ years of Experience



Recycling process - Collection, segregation, bailing, packing, and exportation of recyclables





Provide dignity & structured support to Collection Pillars of Recycling (CPR)



Despite collecting over **60%** of recyclables, CPRs remain stigmatized and overlooked **globally**



# PRF's Regional Work



PRA Officially formed on 2<sup>nd</sup> August 2024 in Fiji, with PRF holding the role as Secretariate

## Founding regional countries of PRA:



Lead to the **KEY** outcomes highlighted at the 4<sup>th</sup> CPRT mentioned below



PRA members attend the 4<sup>th</sup> Clean Pacific Round Table in Tuvalu

**Recognise** the establishment of the *Pacific Recyclers Alliance* which includes membership of the six existing National Recyclers Associations to harmonise waste management and pollution control activities across the Pacific.

**Encourage** Pacific Island Countries and Territories to establish National Recyclers Associations and increase membership and representation in the *Pacific Recyclers Alliance*.

**Support** the important role that Collection Pillars of Recycling (CPR) provide to members States.



Lack of **Political Will**



Lack of **SUPPORT** to  
Grassroots Organizations



Lack of **RECOGNITION** to CPR



Poor **ATTITUDE** toward  
recycling and those involved



**PUSHBACK & CORPORATE  
BULLYING**



GRASSROOTS SOLUTIONS: BLUEPRINT  
For A Circular Economy

# OUR FUNDAMENTAL PILLARS- TOWARD A CIRCULAR ECONOMY





# Structured Support to the CPR's



Sanitation & Lunchroom provision for CPR at the Lautoka and Ba Dumpsite



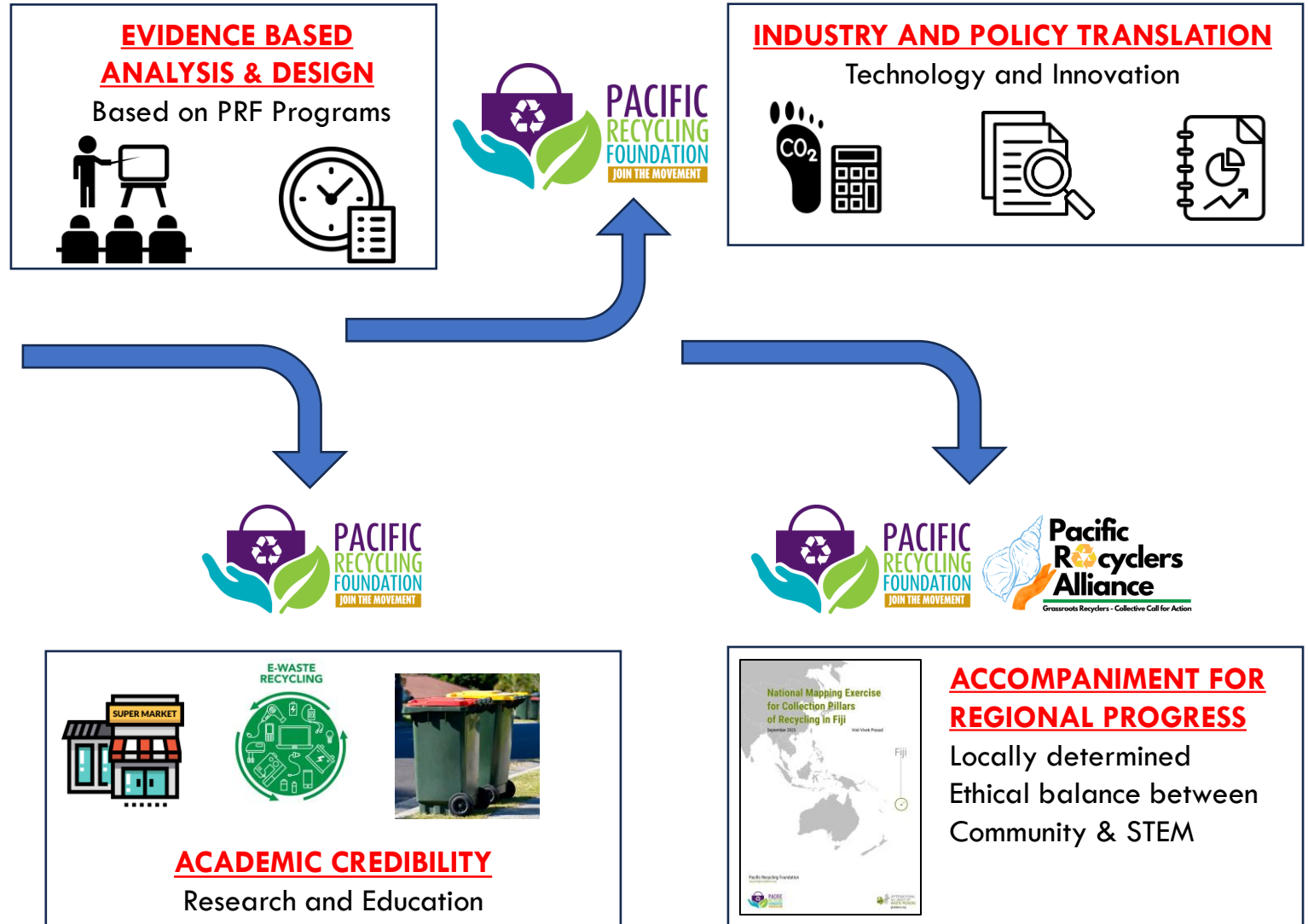
Provision of Personal Protective Equipment (PPEs)



Social Gifting for the children and family of the CPR



# Evidence-Based/Academic Lens





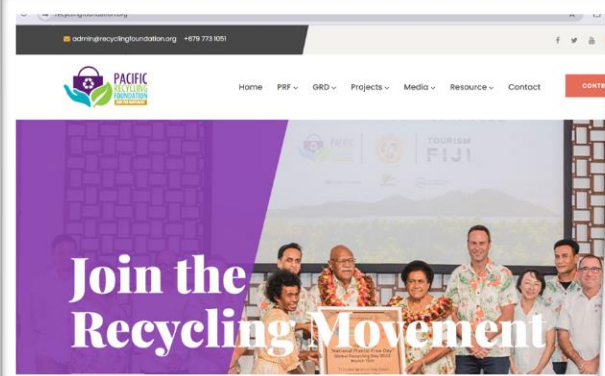
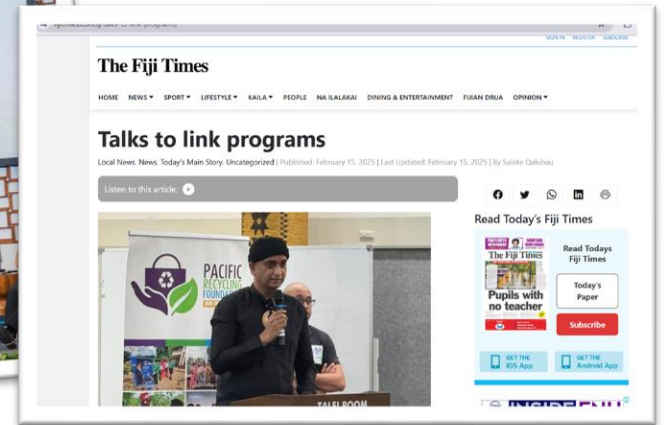
# Regional Collaboration through the Pacific Recyclers Alliance (PRA)



The following images are from the Inaugural Pacific Recyclers Meeting held in Nadi, Fiji in August 2024



# Advocacy





# Comprehensive Programs

## Recycling On the Go (ROG) Ambassadors (School Program)



## I-Recycle Program Implementations through Development Partners



## Soft Plastic Recovery Initiative with ANZPAC 2024



**And Other Programs.....**



# IMPACTS of PRF/WRFL's Programs





# Impacts of PRF/WRFL's Programs:



## Environment Benefits

- Diverted 4,837 tonnes of recyclables from landfills in 2024.
- Launched the I-Recycle Hub Bin in multiple areas to improve recycling practices.
- Advocates waste segregation and circular economy practices through structured recycling programs.
- Introduced the Circular Pacific Plastic Project to reduce plastic waste in Fiji.



## Social Benefits

- Provides structured support to informal waste collectors (Collection Pillars of Recycling).
- Conducts awareness campaigns to change public attitudes towards waste management.
- Engages local communities, schools, and businesses in sustainable recycling initiatives.
- Advocates for social justice and inclusivity in the recycling sector.



## Economic Benefits

- Creates employment opportunities within the recycling and waste management industry.
- Encourages businesses to adopt sustainable waste disposal practices, reducing long-term operational costs.
- Supports local entrepreneurship in the recycling sector.
- Reduces the financial burden on municipal waste management services.



## Global Alignment

- Works with government agencies and businesses to enhance recycling infrastructure.
- Aligns with Fiji's climate commitments under the SDGs and global sustainability goals.
- Strengthens public-private partnerships for long-term waste management solutions.
- Advocates for stronger policies for waste reduction and responsible recycling.



**Why is Waste Management still a major  
'CRISIS'**





**LISTENING** is the first **STEP** towards a circular economy in the Waste Management Crisis

not easy, but the solution is **“SIMPLE”**

**THANK YOU, VINAKA VAKA LEVU, TAGIO  
TUMAS, FA'AFETAI, TANKIU TUMAS AND MALO**

