

A high-speed train with a white body and blue and red accents is crossing a modern cable-stayed bridge. The bridge has several white pylons and cables. In the background, there are modern city buildings under a clear sky. The train is moving from left to right.

**Thailand**

**Aichi 2030 Declaration on  
Environmentally Sustainable Transport (EST)**  
16<sup>th</sup> Regional Environmentally Sustainable Transport Forum

**Mrs. Chutinthorn Mankhong**

Chief of Sustainable Transport Promotion group, Bureau of Safety Planning  
Office of Transport and Traffic Policy and Planning, Ministry of Transport



# Contents

**01**

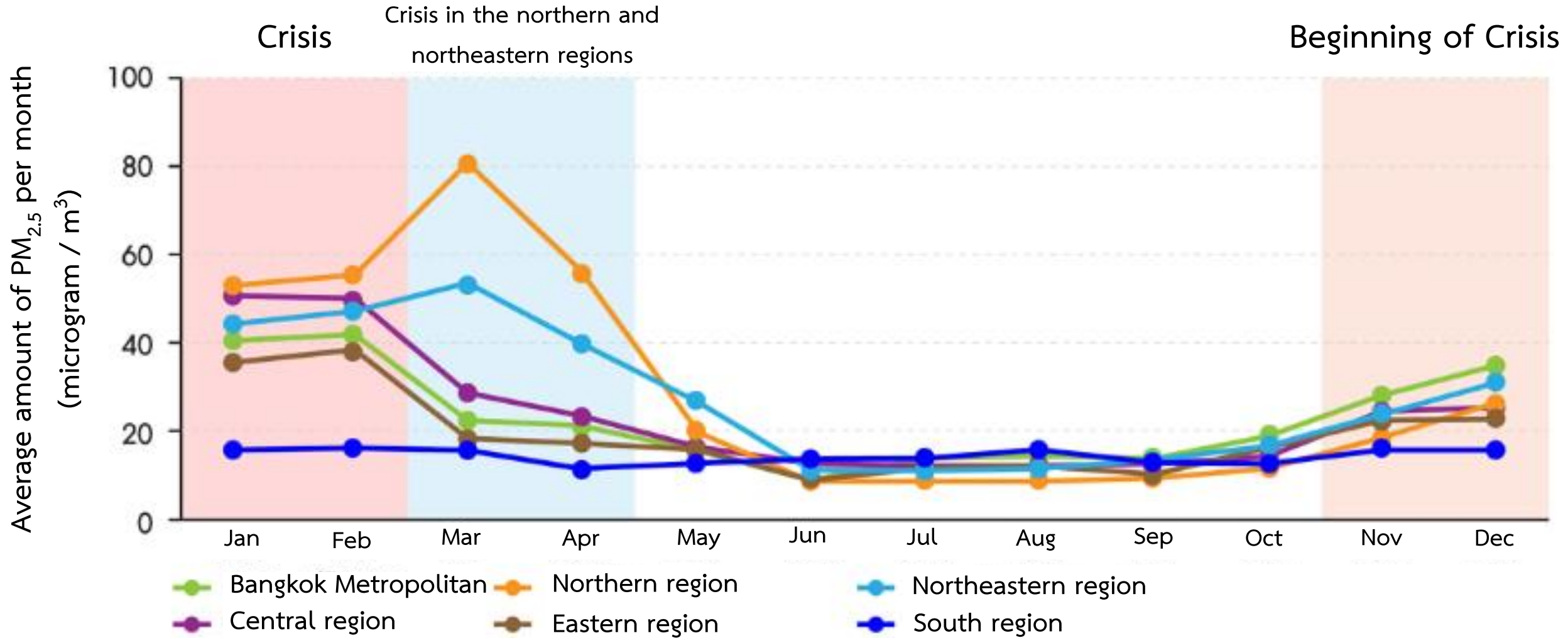
**Aichi Goal 1C: Air Pollution**

**02**

**Aichi Goal 3:  
Economic Sustainability  
(Transport Infrastructure)**

**03**

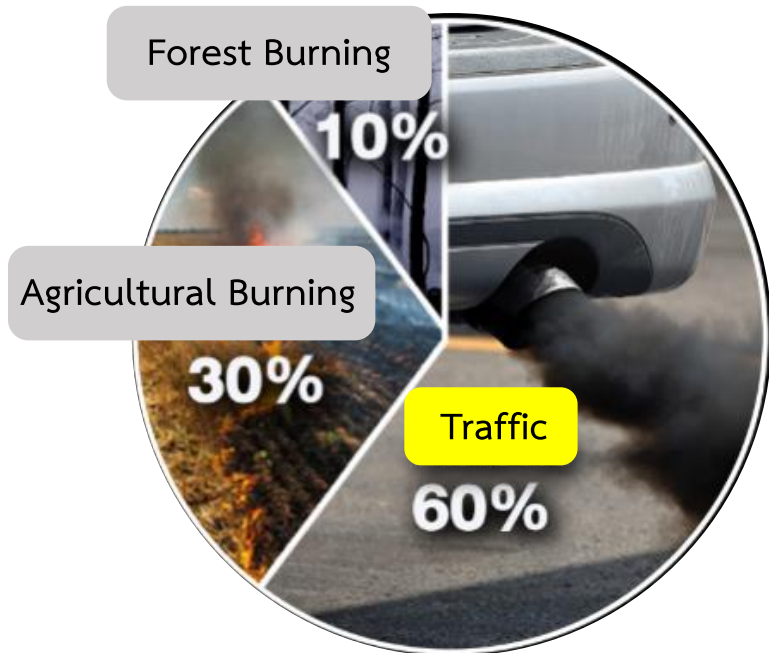
**Aichi Goal 5: Urban Access**



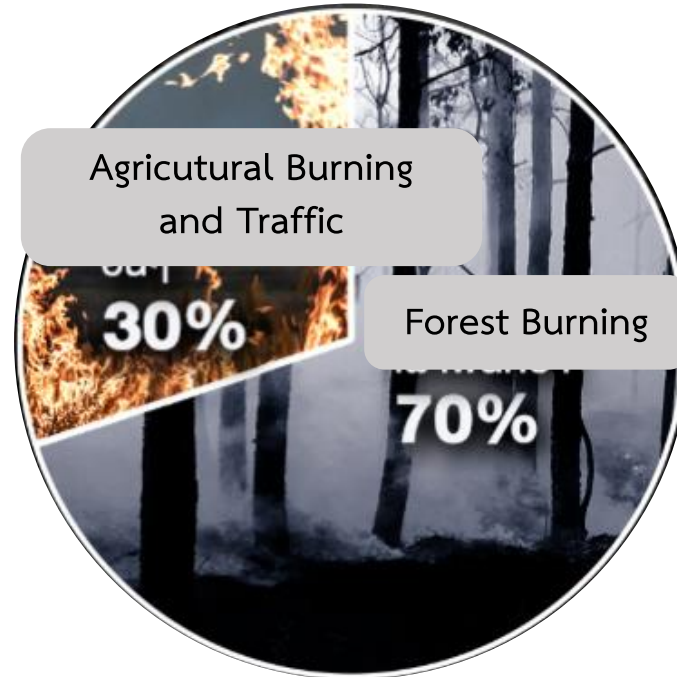




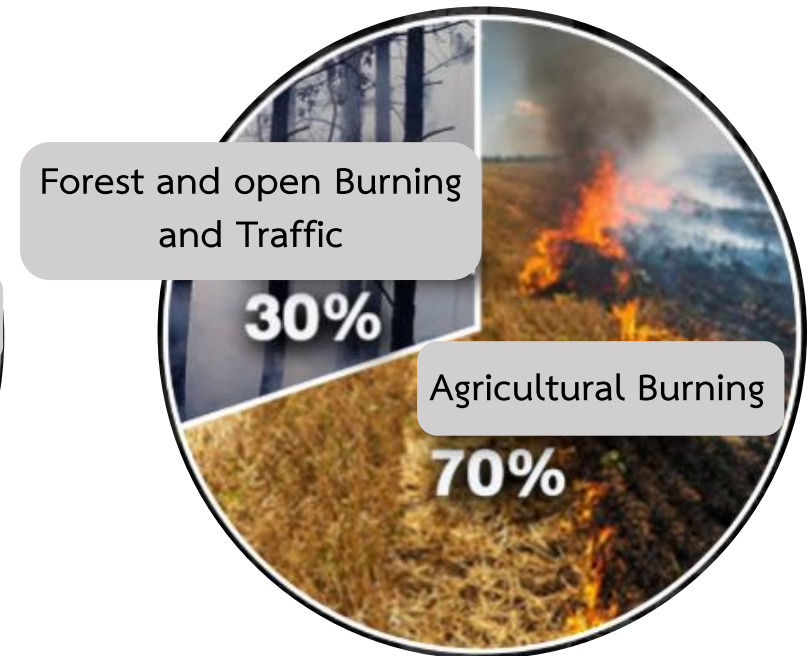
## PM 2.5 Emission Source



Bangkok Metropolitan



Northern Region



Central and Northeastern Regions



## แผนปฏิบัติการแก้ไขปัญหามลพิษขนาดเล็ก (PM<sub>2.5</sub>) ของภาคคมนาคม ในพื้นที่กรุงเทพมหานครและปริมณฑล



โดย

สำนักงานนโยบายและแผนการขนส่งและจราจร

กระทรวงคมนาคม



มกราคม ๒๕๖๓

## PM<sub>2.5</sub> Emission Reduction Action Plan in Bangkok Metropolitan Area

### Short Term Measures

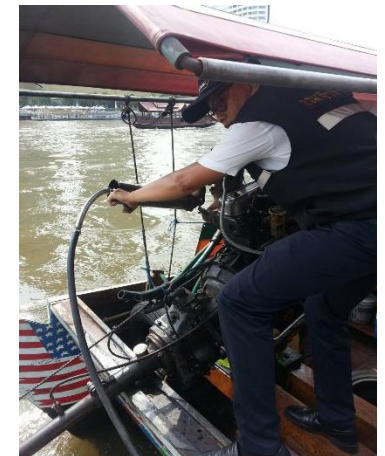
- Engine maintenance,
- inspection of the agency's vehicles.
- Improve fuel quality
- Solve traffic congestion
- PM Reduction

### Middle Term Measures (2022 – 2026)

- Promote public transportation
- Replace clean energy engine
- Tax measures
- Limit the use of old cars
- Concept of integrating welfare with policy

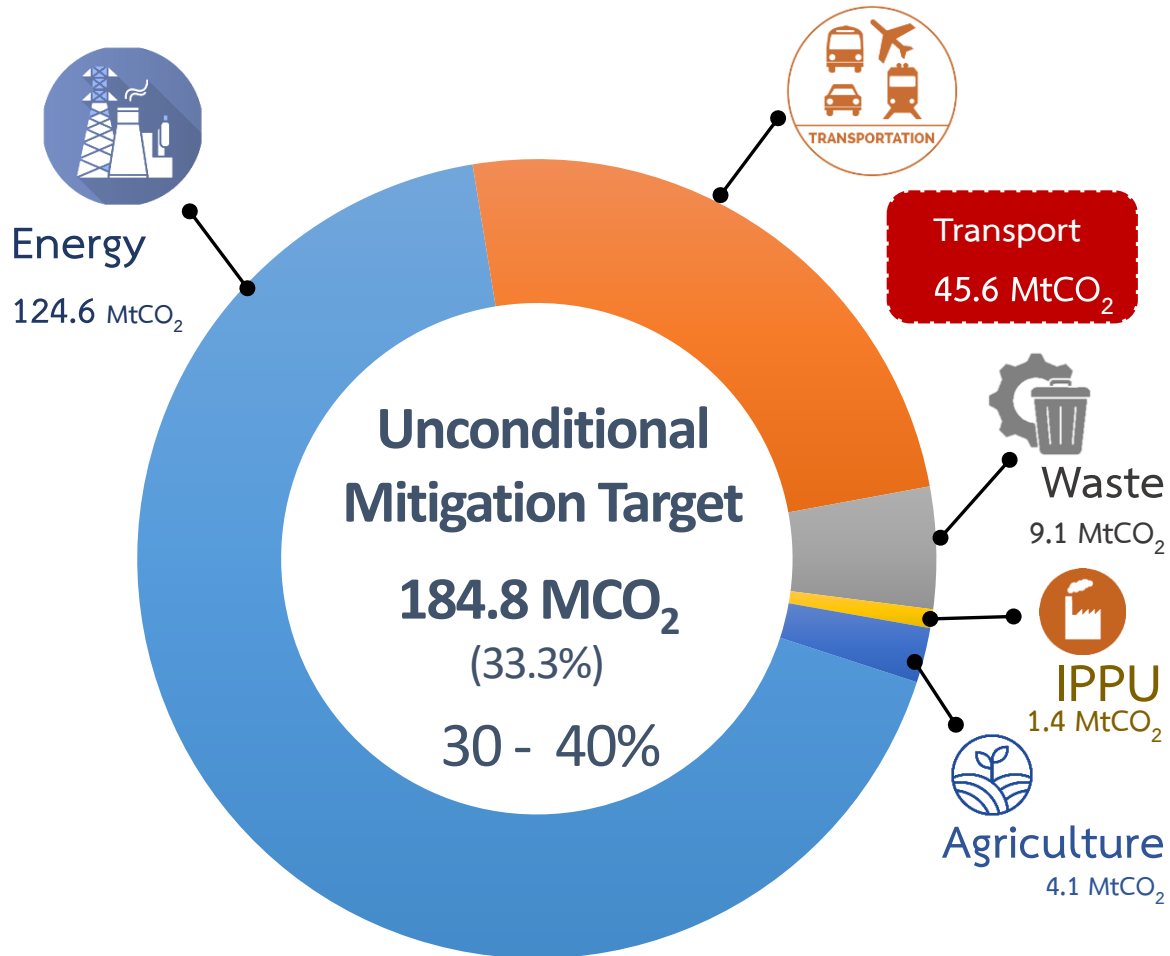
### Long Term Measures (2027 - 2032)

- Implement tax measures and manage travel demand.
- Prohibit large trucks
- Limit the use of diesel engines
- Switch to clean energy engines (EV bus)





## Thailand CO<sub>2</sub> Reduction Target by 2030



## NDC in Transport : COP 26

- Electrification of Transport

28.29  
MtCO<sub>2</sub>e

- Urban Mobility

1.78  
MtCO<sub>2</sub>e

- Inter-urban Transport and Green Logistics

1.60  
MtCO<sub>2</sub>e

- Energy Efficiency Improvement

13.94  
MtCO<sub>2</sub>e

**CO<sub>2</sub> Reduction**  
**45.61**  
**MtCO<sub>2</sub>e**  
By 2030

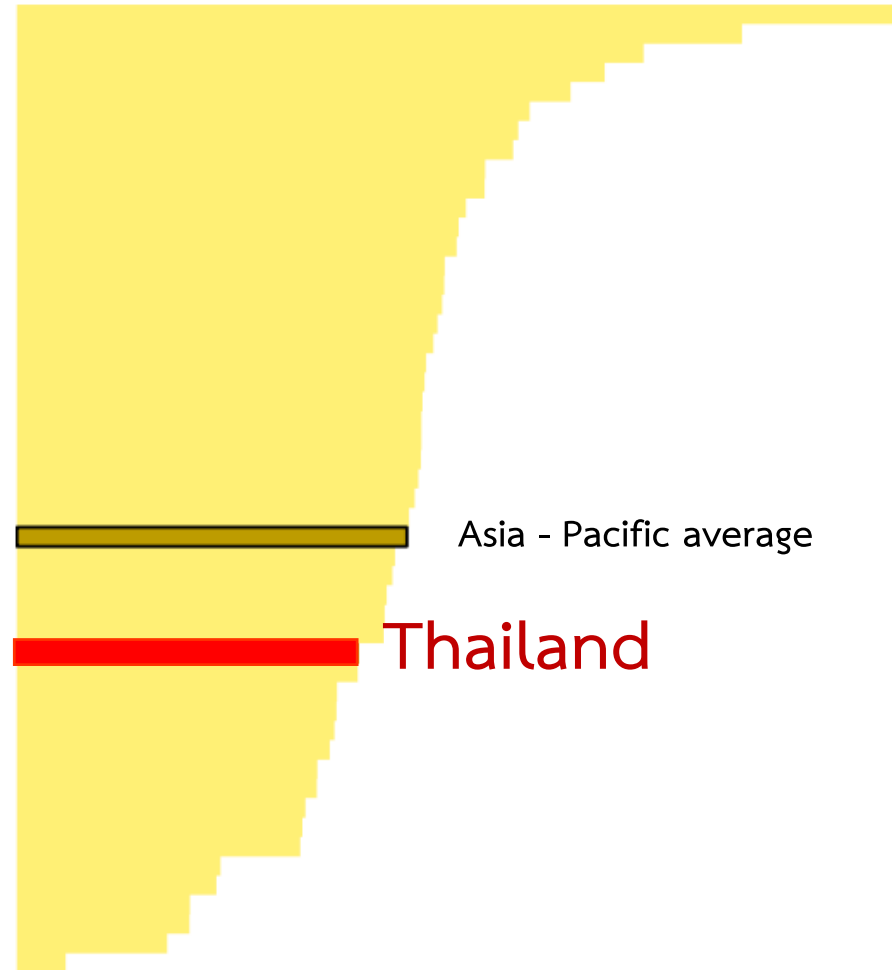
### Supportive Mitigation

- Transport Infrastructure and Support
- Future Energy for Transport



Transport as a share of GDP

0% 5% 10% 15% 20% 25%



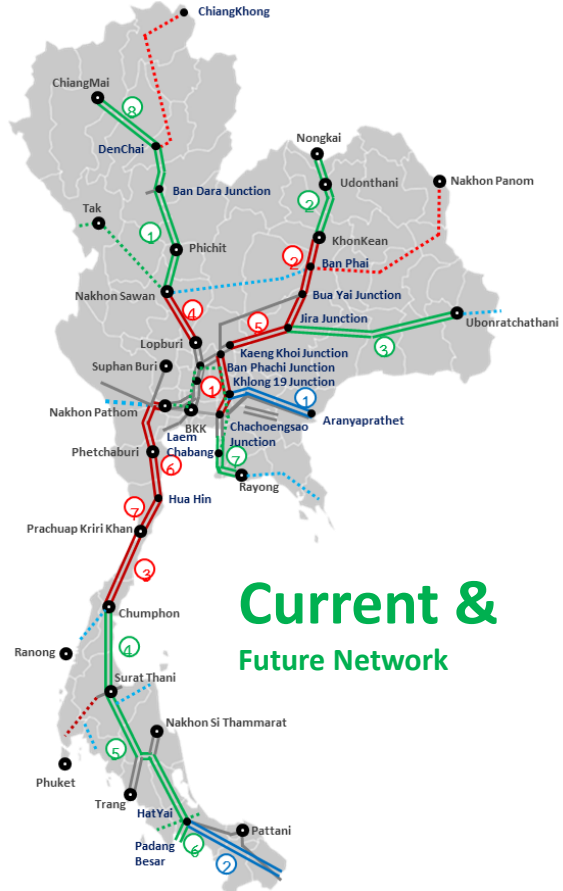
(UN, 2023)





# 1 Logistics and Freight Transport Systems

- Double-track projects for development to shift modes from road to rail.



## Rail Freight Expansion

### Current Network

Single track: 2,974 km (73.54%)  
 Double track: 963 km (23.81%)  
 Triple track: 107 km (2.65%)



### Phase 1: Urgent Phase

Comprising 7 Routes 993 km

- 5 routes completed
- 2 routes under construction



### New Routes : 677 km (under construction)

- Den Chai–Chiang Rai–Chiang
- KhongBan Phai–Mukdahan–Nakhon Phanom







# 1 Logistics and Freight Transport Systems

- High-speed rail project to connect major cities and sub-regions.



## Under Construction

- 2 Routes
- 473 km

### 1. Bangkok-Nakorn Ratchasima



### 2. Phase 1 : 3 Airport Seamless



## Rail Freight Expansion

### High Speed Train Development Plan 2017-2027

<b>Immediate Phase 4 sections</b>	<b>1,248 km</b>
2017-2021 ① Bangkok-Nakhon Ratchasima	(253 km)
② Bangkok-Rayong	(260 km)
Phase 1 3 Airports Seamless Connections	220 km
Phase 2 U Ta Pao-Rayong	40 km
③ Bangkok-Phitsanulok	(380 km)
④ Nakhon Ratchasima-Nong Khai	(355 km)
<b>Medium Phase 2 sections</b>	<b>499 km</b>
2022-2026 ① Bangkok-Hua Hin	(211 km)
② Phitsanulok-Chiang Mai	(288 km)
<b>Long Term Plan 2 sections</b>	<b>759 km</b>
2026-2027 ① Hua Hin-Surat Thani	(424 km)
② Surat Thani-Padang Besar	(335 km)

**Total : 2,506 km**



# 1 Logistics and Freight Transport Systems



Water Freight

- Development of **Laem Chabang Port, Phase 3** to enhance transportation efficiency and promote an eco-friendly port



Under Construction

To be opened 2028





# 1 Logistics and Freight Transport Systems



## Air Transport

- Expansion of **Suvarnabhumi Airport with a Third Runway** to Improve Air Travel Efficiency,



Opened Nov 2024





## 2 Intermodal Facilities Development



Single Rail Transfer Operator (SRTO)

Dry port / CY



### Container Yard (CY) map in Thailand



Currently, there are 38 CYs

Future



Additional 21 CYs





## 1 Urban Mobility



- Development of Public Rail Transport Systems for Urban Access

### METRO in BMA



Completed Network : 554 km

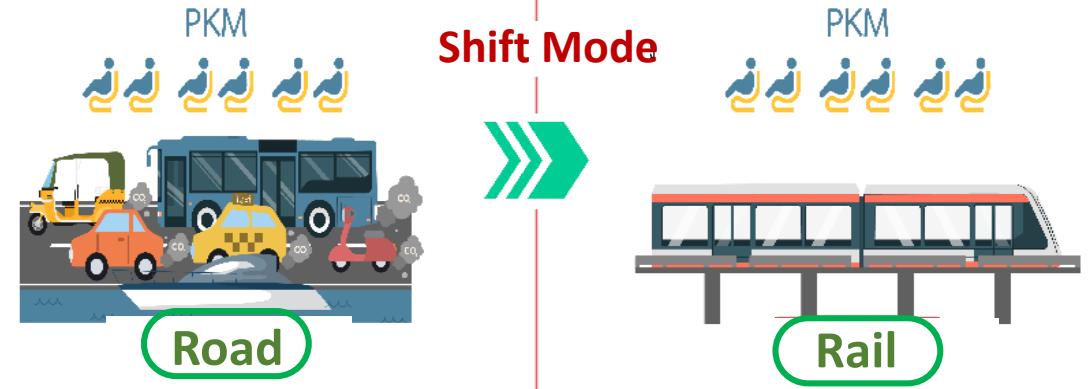
OPEN In Services

7 Lines, 276.84 km



- Green Line
- Blue Line
- Purple Line
- Red Line
- Golden Line
- Pink Line
- Yellow Line

Source : DRT,2024







# 1 Urban Mobility



- Development of public transport in major cities.

**Chiang Mai**

Light Rail Transit: LRT



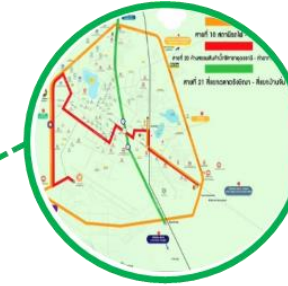
**Phitsanulok**

Bus/Microbus/TRAM



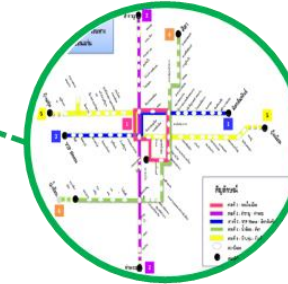
**Phuket**

Light Rail Transit: LRT



**Udonthani**

EV Bus



**Khon Kaen**

Light Rail Transit: LRT

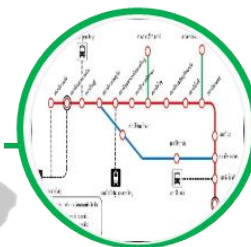


**Nakhon Ratchasima**

Light Rail Transit: LRT

**Songkhla**

Light Rail Transit: LRT







2

TOD



- Development of Transit-Oriented Development (TOD) to Improve Urban Access







3

# Feeder System

- Promoting feeder systems and common ticket to support the MRT network

EV Bus



EV Taxi



EV MC



EV Boat



EV Tuk Tuk



E-Scooter







4

Common Ticket

- Encouraging the use of a common ticket, with implementation expected by 2025.





A high-speed train with a white, blue, and red livery is crossing a modern cable-stayed bridge in a city. The bridge has white pylons and cables. In the background, there are several tall skyscrapers under a cloudy sky. The train is moving from left to right.

**Thailand**

**Thank you for your attention.**