



Department of Transportation

16th Environmentally Sustainable Transport Forum

Plenary Session 2: Spotlight on the Philippines *Philippines' Low Carbon Initiatives in the Transport Sector*

ADB Headquarters, Manila | 10 December 2024 | 13:00 – 14:30

Leonel Cray P. De Velez

Assistant Secretary for Planning and Project Development

Vision, Mandate and Governing Policies

"We will transform the Philippine transport industry and elevate it to

GLOBAL STANDARDS.

*Jaime J. Bautista
Secretary of Transportation*



*"We must keep the momentum.
And aspire to*

BUILD BETTER MORE."

*President Ferdinand "Bongbong" Marcos, Jr.
during his July 2022 SONA*

A Comfortable, Accessible, Safe, Sustainable, and Affordable (CASSA) transportation system



Develop active transport and mass transit networks that are accessible, seamless, and convenient



Strengthen our nautical highways and maritime industry while lowering logistics costs



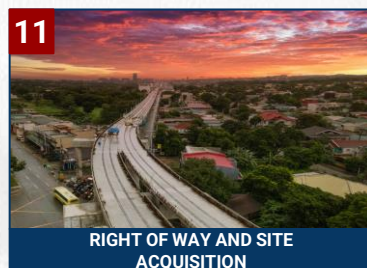
Revive cargo railways



Develop active transport and mass transit networks that are accessible, seamless, and convenient

Thematic Initiatives

THEMATIC INITIATIVES



Centralizing **climate change considerations** during **project implementation** by embedding **climate-resilient design** in all **project preparation** activities



TA10229-PHI: Promoting Climate Smart Infrastructure

It will support the IPIF-AF2 loan and its implementing agencies to deliver climate-related infrastructure projects in the Philippines by:

- Supporting upstream analysis to highlight projects that are critical to build climate resilience and support greenhouse gas reduction
- Supporting prioritization/selection/screening of projects to be more climate-friendly
- Embed climate-resilient design in all IPIF-supported projects.

	Amount (T USD)
DOTr	750
Develop a green contract procurement strategy, incorporating green-gray infrastructure features across various transportation projects	200
Developing climate resilient infrastructure standards	200
Mobilizing climate finance, inc. capacity building on project design	100
Developing decarbonization pathways for the transport sector	250
DPWH	750
Initial support for the development of PMMS for ODA Projects Phase 2	200
Assessment and revision of DPWH's planning and engineering guidelines/ standards for roads, bridges, and flood management projects to consider best practices on climate aspects.	100
Assistance to the FCMC to conduct climate risk assessments for key flood risk management projects.	450
TOTAL	1,500

Enabling Policies to **accelerate** the adoption of **electric vehicles** in the Philippines

LTO AO No. VDM 2024-044	DOTr DO No. 2023-022	DOTr DO No. 2023-003	LTO AO No. VDM 2024-044	LTO AO No. VDM 2024-044
Amended Consolidated Guidelines in the Classification, Registration, and Operation of All Types of Electric Motor Vehicles	Inclusion of Green Routes in the Guidelines on the Implementation of the Public Transport Modernization Program (PTMP)	Pilot Implementation of Smart Electric Shuttle Service Program	Consolidated Guidelines in the Classification, Registration, and Operation of All Types of Electric Motor Vehicles	Guidelines and Protocols for Active Transportation and Light Mobility Vehicles

ELECTRIC VEHICLE INDUSTRY DEVELOPMENT ACT



DOTr is in-charge of demand generation and the regulation and registration of EVs, as well as franchising of EVs used for public transportation.



TARGET EV PENETRATION RATES

5% MANDATORY EV SHARE	In corporate, public transport, and government fleets.
10% CREVI BAU SCENARIO	at least ten percent (10%) of the total fleet by 2040 for all sectors, excluding EV trucks.
50% CREVI CE SCENARIO	at least ten percent (50%) of the total fleet by 2040 for all sectors

CREVI TARGETS			
Horizon	EV/EVCS	BAU	CES
2023-2028	EV	311,700	2,454,200
	EVCS	7,300	66,500
2029-2034	EV	580,600	1,851,500
	EVCS	14,000	41,800
2035-2040	EV	852,100	2,001,600
	EVCX	20,400	39,800

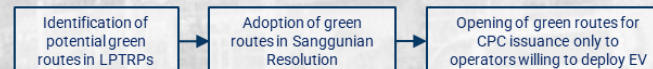
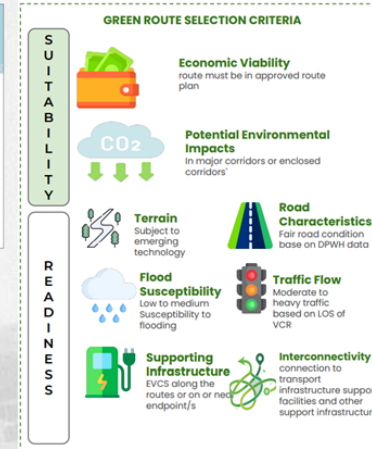
WHERE WE ARE

15,003 Registered EV (based on EVAP) 13,342 MC/TC 1,192 SUV/UV 403 cars/sedan 22 bus/trucks
592 EV Charging Stations (based on DOE) 204 AC 29 DC 349 BSS
9 E-PUV Model with COC 2 Class 1 6 Class 1 1 Class 3
364 Operational e-PUVs With SPA/PA/PC as of June 2024
29 Routes with Operational e-PUVs as of June 2024

GREEN ROUTE PLANNING



"Green routes refer to public transport routes identified and designated... to be exclusively traversed by all electric public utility vehicles (PUVs)."



Fiscal and non-fiscal incentives to **accelerate** the adoption of **electric vehicles** in the Philippines

FISCAL INCENTIVES

Reiterated in LTO MC 2022-2350

30% DISCOUNT
For **Battery Electric Vehicles**

15% DISCOUNT
For **Hybrid Electric Vehicles**

For payment of the (a) MVUC, (b) vehicle registration fees, and (c) inspection fees, for 8 years from the effectivity of the EVIDA

2022 SIPP

INCOME TAX HOLIDAYS
For **4 to 7 years**
For green ecosystems

Type of Vehicle	Equity Subsidy (In PHP)	
	With Loans under GFIs	With Loans under PFIs
MPUJ Class 1	210,000.00	210,000.00
MPUJ Class 2/3/4	280,000.00	360,000.00
Modern UVE	280,000.00	360,000.00
Modern Minibus	400,000.00	400,000.00
Modern PUB	600,000.00	600,000.00

EO 488 s. 2006

ZERO TARIFFS
on components and parts used for the assembly of EVs and HEVs

RA 10963 or TRAIN LAW

100% EXCISE TAX EXEMPTION
For **Electric Vehicles**

50% TAX EXEMPTION
For **Hybrid Electric Vehicles**

EO 12 s. 2023

SUSPENSION OF IMPORT DUTY
on EVs, parts, and related components for 5 years

NON-FISCAL INCENTIVES

Priority registration & renewal of registration

Dedicated lanes / for Evs signage

"In the event, however, that such is not feasible, the PWD or Senior Citizen Lane may be used..."

Expeditious processing by LTFRB of applications for franchise to operate, including its renewal

Qualifier in Operator Selection

If there are multiple operators with complete reportorial documents, those with available e-PUVs to be used shall be prioritized.

Dedicated lanes on dedicated days

Dedicated Plate Series



	EV	HEV
Middle	V to Z	V to Z
Rightmost	A to M	N to Z

Issuance of a special type of vehicle plate.

Reference: Memorandum in July 2023 on "Uniform Policy on License Plate Series"

ELECTRIC VEHICLE INCENTIVE STRATEGIES

To promote the transition towards electric mobility, the DOTr shall coordinate with NGAs, NGOs, development partners, and other relevant organizations in the development, implementation, and evaluation of EVIS

The LTO and LTFRB shall prioritize vehicle registration and renewal of such, and expeditious processing of the application and renewal of CPCs, respectively

The LTFRB shall explore and study the extension of validity of CPCs for concerned transport service entities ("TSEs") on green routes and routes of TSEs using EVs, and issue necessary guidelines thereof.

TSEs with e-PUVs shall be prioritized in the implementation of relevant operational subsidy programs for e-PUVs.

Implementing pilot projects to accelerate the adoption of electric vehicles in the Philippines

UNDP LOW CARBON TRANSPORT PROJECT



5 MODERN e-PUVs
Distributed to three cooperatives in three cities



5 COMPLETED FS
With Complete Building and Engineering design for the establishment of EVCS in Baguio City, Iloilo City, and Pasig City

1 ESTABLISHED EVCS
in Pasig City

e-MOBILITY ASAP PROJECT



OBJECTIVE: to reduce GHG emissions from transport in the Philippines through e-mobility industry development. The project employs a dual-strategy approach, integrating market transformation and barrier elimination through industry support development and targeted capacity building.

150 MODERN EVs
to be deployed under this Project in partnership with DTI, UNIDO, and Clean Air Asia.

DOTr to provide support in the development and deployment of demonstration sites to validate the business case of electric PUVs for industry's consideration

WORLD BANK'S HIGH QUALITY BUS SERVICES STUDY

STATUS: [i] To inform the Metro Manila High Quality Bus Corridors, an IFP; [ii] Implementation of green lanes/corridors for e-buses; [iii] Study underway. Completion by September 2024. Additional studies for safeguards until Q2 2025; [ii] Submission for NEDA Approval by Q3-Q4 2025.

~125 Estimated number of 18-m e-buses to be procured

~75 Estimated number of 12-m e-buses to be procured

WORLD BANK'S PTMP TECHNICAL ASSISTANCE

STATUS: Coordinating with the WB on the details (e.g. Terms of Reference) for the Project.

The WB is likewise aiming to support the deployment of EVs and launch a Regional Facility catering to the procurement of electric PUVs. This is a platform the Department is aiming to tap.

DAVAO PUBLIC TRANSPORT MODERNIZATION PROJECT



STATUS: Awarded civil works packages Ongoing procurement of contract packages (Bus, General Consultant, etc.)

443 TARGET e-BUS
to ply five routes in Metro Davao

197 CHARGING STATIONS
to be established

Q2 2026 TARGET OPERABILITY
of e-Bus

DAVAO PUBLIC TRANSPORT MODERNIZATION PROJECT

a bus-based public transport system for Davao City, consisting of a core bus network of over 100 km and a feeder network of over 500 km.

WITH A TOTAL PROJECT COST OF
PHP 73.9 BILLION

800,000
PASSENGERS PER DAY

ROUTES	UNIQUE KILOMETERS
122 → 29	~450 → 670

UNITS
~7,100 PUBLIC UTILITY JEEPNEYS → 1,105 MODERN BUSES ~400 ELECTRIC VEHICLES

PROJECT BENEFITS



MANILA BAY-PASIG RIVER- LAGUNA LAKE FERRY SYSTEM PROJECT

Involves the financing, design, construction, purchase, operations and maintenance of a high-capacity, high-frequency, low carbon ferry system that will strategically link Manila Bay and Laguna Lake through the Pasig River, improving connectivity within the Greater Capital Region.

Construction Progress

As of 31 July 2024

Project Preparation Stage

TARGET START OF OPERATIONS

2027



METRO MANILA SUBWAY PROJECT

This 33-kilometer underground railway line shall traverse key financial centers across Metro Manila as well as the country's main international airport. Funded under Japanese Official Development Assistance, the project will benefit more than 500,000 passengers daily on its opening year.

Construction Progress

As of 30 Sep. 2024

16.56%

TARGET PARTIAL OPERATIONS*

2028

TARGET FULL OPERATIONS

2031

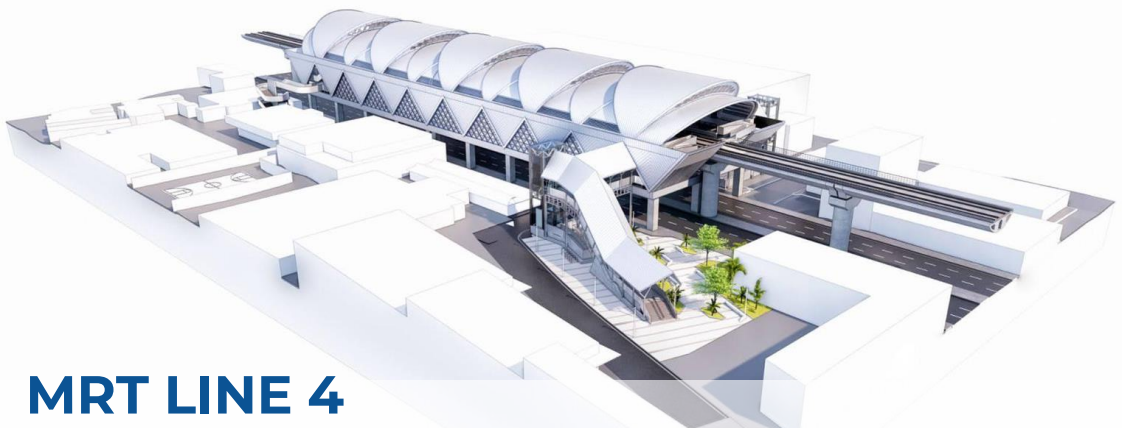
"The Metro Manila Subway, touted as the country's most ambitious infrastructure project to date, has already attained significant progress in its construction."

Pre-construction Stage Railway Projects



PNR SOUTH LONG HAUL PROJECT

This project is a 557 km-long rail line consisting of 33 Stations which connect Metro Manila to Southern Luzon provinces. It shall reduce travel time from Manila to Bicol from 12 hrs via car to under 6 hrs and has an estimated ridership of 30,000 per day.



MRT LINE 4

13.4 km railway system intended to serve the eastern side of Metro Manila which will provide an efficient connection between the densely populated cities in Metro Manila and neighboring municipalities of Rizal (i.e. Cainta and Taytay), and will reduce travel time from 1 hr 23 mins to 21 mins.



MINDANAO RAILWAY PROJECT PHASE 1

This Project is an inter-city rail system in the southernmost major island of the Philippines, Mindanao. With a total of 100.2 kilometers consisting of 8 Stations that connect Tagum City in Davao Del Norte, Davao City and Digos in Davao Del Sur. It shall reduce the travel time from Tagum City, Davao del Norte to Digos City, Davao del Sur from 3 hrs to 1 hr.



DOTr ROAD TRANSPORT ONGOING INFRASTRUCTURE PROJECTS

LUZON

A 5.1-km elevated and covered pedestrian walkway connecting key rail stations along EDSA to and from nearby amenities and other transportation facilities. The project will be implemented at Balintawak, Cubao, Guadalupe, and Taft Stations. It aims to improve pedestrians experience and removes conflict of pedestrians and traffic at-grade level, reducing accidents and potential injuries, and better accessibility for senior citizens and persons with disabilities.



EDSA GREENWAYS PROJECT

Establishment of Greenways in Certain Areas along EDSA

Construction Progress As of September 2024	Ongoing Land Acquisition and Pre-Procurement Activities
--	--

TARGET START OF OPERATIONS	2028
-----------------------------------	-------------

A 4.7 ha. integrated and multi-modal terminal that provides convenient connection options to passengers. It will serve as a transfer point between provincial buses and multiple modes of in-city transports such as city buses, proposed subway system, PNR, UVs, jeeps, and taxis.



TAGUIG CITY ITX

Establishment of Intermodal Terminal in Metro Mania for South Luzon

Construction Progress As of September 2024	Ongoing land acquisition
--	---------------------------------

TARGET START OF OPERATIONS	2026
-----------------------------------	-------------

PROJECT DEVELOPMENT STAGE

- NCR EDSA Busway
- North NCR ITx
- Metro Manila HQBS
- Manila Bay BRT
- Metro Manila Bike Expressway Project
- Central Luzon BRT
- Active Transport Network

Legend:

- ODA-Loan
- PPP

PTMP - Public Transport Modernization Project

BRT - Bus Rapid Transit

HQBS - High Quality Bus Systems

ITx - Intermodal Terminal Exchange

VISAYAS

PROJECT DEVELOPMENT STAGE

- *Selected PTMP Pilot Areas
- Cebu BRT PPP
- Panglao-Tagbilaran BRT
- Cebu PTMP



CEBU BRT

Establishing BRT System in Cebu

Establishment of a 17-km segregated and 18-km mixed traffic BRT system in Cebu traversing through Cebu City's Central Business District (CBD), from Lawaan I, Talisay City in the Southwest to Talamban, Cebu City in the Northeast. The system consists of 22 bus stations, 2 trunk terminals, 2 mixed traffic terminals, 1 depot, 62 Bus stops and will accommodate 100,000 to 350,000 daily passengers.

Construction Progress As of September 2024	Ongoing Construction of Package 1: 69.31% Pre-Procurement Activities: Package 2&3
--	--

TARGET START OF OPERATIONS	Partial Operations: 2026 Full Operations: 2027
-----------------------------------	---

CBRT PPP
(O&M and Bus Supply)

MINDANAO

PROJECT DEVELOPMENT STAGE

- *Selected PTMP Pilot Areas
- Davao PTMP O&M
- Zamboanga PTMP
- Metro Davao PTMP
- Cagayan de Oro BRT



DAVAO PTMP (DPTMP)

Development of bus-based public transport system for Davao City

A 670-kilometer bus route network, serving 29 interconnected routes with 5 depots, 3 terminals, 1 driving school, and 1,074 bus stops with shelters and poles. The Project will also procure around 1,105 units of buses equipped with state of the art ITS-capable equipment. The system is expected to accommodate 700,000 to 1,100,000 daily ridership.

Construction Progress as of September 2024	Ongoing land acquisition; All 4 contract packages awarded; pre-construction surveys ongoing
--	--

TARGET START OF OPERATIONS	2026
-----------------------------------	-------------

DPTMP OPERATIONS & MAINTENANCE (O&M)
(with ITS and AFCS)

ACTIVE TRANSPORT PROGRAM

The Active Transport Program promotes sustainable mobility by prioritizing walking, non-motorized, and light electric vehicles within the country's transport network. Focusing on people-oriented development, the project aims to encourage increased use of active transport through the construction of active transport infrastructures. By doing so, it seeks to reduce single-occupancy vehicle use, alleviate traffic congestion, improve first and last-mile connectivity, lower transportation costs, and enhance public health and the environment. The project aims to establish 2,400 kilometers of bike lanes nationwide by 2028.

Progress

As of 31 July 2024

Total Established Bike Lanes: Approximately 812 kilometers
Total Maintained and Upgraded Bike Lanes: 422.34 kilometers

Covered Areas

(per Region and City/Municipality)

REGION I	Laoag, Ilocos Norte
REGION III	San Fernando, Pampanga
REGION IV-A	San Mateo, Cainta, Antipolo, Lipa, and Batangas City
REGION V	Legazpi, Albay
NCR	Manila (Intramuros), Caloocan, Las Piñas, Makati, Malabon, Mandaluyong, Marikina, Muntinlupa, Navotas, Parañaque, Pasay, Pasig, San Juan, Taguig, and Quezon City
REGION VI	Kalibo, Aklan
REGION VII	Cebu, Mandaue, Lapu-Lapu, Cordova, and Talisay
REGION VIII	Tacloban, Leyte
REGION XI	Davao and Tagum

EDSA BUSWAY PROJECT

The EDSA Busway is a flagship project of the Department of Transportation and in a joint undertaking with the Metropolitan Manila Development Authority (MMDA) and the Department of Public Works and Highways (DPWH). The project features the use of a dedicated median lane for buses with stations built at the median island, allowing for more efficient travel by avoiding conflict with connecting streets, driveways, commercial centers, and curbside drop-off points.

Progress

As of 31 July 2024

Ongoing infrastructure and system developments

No. of Operational Busway Stations	21
No. of Proposed Concourse Projects	3 (SM North EDSA, SM Megamall, and Aseana)
Overall Ridership	246,659,202 (as of 31 July 2024)
General Target Infrastructure Improvements	<ul style="list-style-type: none"> Elevators/lifts for the disabled and elderly access Sheltered entrance with off-board ticketing Wider and longer platform area that can board four (4) 12m buses simultaneously Waiting/seating area with garbage disposal spots Concrete barrier with steel fencing on top Proposed digital clocks, solar panels, station name signages, transit maps at footbridges and Smart Traffic Surveillance System Rehabilitation of bus lane pavement, reflectorized pavement markings

With ongoing Feasibility Study for the Public-Private Partnership Engagement, which target implementation is on 2025

PUBLIC TRANSPORT MODERNIZATION PROGRAM

A transformational large-scale initiative of the Department of Transportation (DOTr) that aims to establish an organized, efficient, and responsive public transport system that will provide sufficient, comfortable, accessible, safe, sustainable, and affordable mobility for all.

Progress As of 31 July 2024	Ongoing Implementation
No. of Consolidated Units	159,862 (83.38%) out of 191,730 baseline units
No. of Consolidated Routes	6,090 routes
No. of Cooperatives and Corporations formed	1,749 cooperatives 1,088 corporations
No. of LGUs Capacitated	1,441 out of 1,574 LGUs (92%)
No. of Submitted LPTRPs	1,125 out of 1,574 LGUs (71%)
No. of Approved LPTRPs	197 out of 1,574 LPTRPs (12%)
No. of Operational MPUVs	11,197 nationwide (7%) of total consolidated units
No. of MPUVs with Equity Subsidy (to increase upon full utilization of funds)	7,510 units
No. of MPUV models with COC	80 models (46 locally manufactured, 34 imported units)
No. of Social Support Beneficiaries	52,525





My order to the DOTr is really very simple:

FULL SPEED AHEAD!

President Ferdinand "Bongbong" Marcos Jr. during his July 2022 SONA

THANK YOU!