



Recommendations and Best Practices for nature-positive and sustainable cities

from the 19th Global Forum on Human Settlements (GFHS 2024)

High-Level 16th Regional EST Forum in Asia

Sustainable Urban Mobility Solutions- Empowering Cities towards

Low Carbon Pathways for Achieving Co-benefits & Economic Resilience in the SDGs Era

10-12 December 2024, ADB Headquarters, Manila, the Philippines





World Cities Day
October 31
BETTER CITY, BETTER LIFE



OBSERVANCE OF WORLD CITIES DAY

2024

Youth Leading Climate and Local Action for Cities



THE 19TH ANNUAL SESSION OF
GLOBAL FORUM ON HUMAN SETTLEMENTS &
NEW SUSTAINABLE CITIES AND HUMAN SETTLEMENTS AWARDS CEREMONY 2024

24 October 2024 UN Headquarters, New York City

ANWARUL K. CHOWDHURY

HAIFENG LYU

HAROLD ADLAI AGYEMAN



Some of the key speakers at GFHS 2024

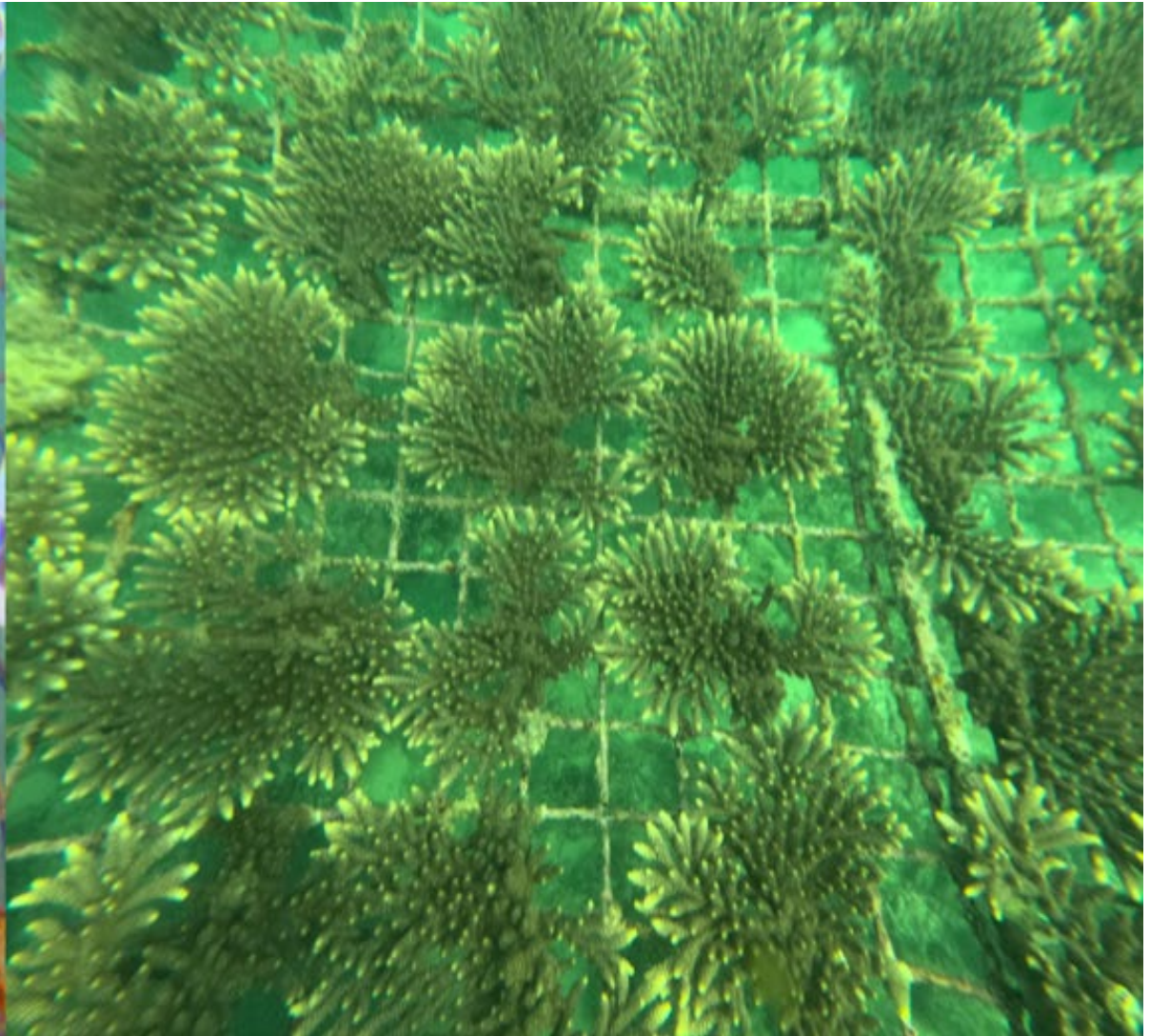
Weizhou Island Volcano National Geopark

- Beihai City, Guangxi, China
- a total area of 24.98 square kilometers
- a forest coverage rate of 85%
- profound historical and cultural heritage
- balance development and environment
- promoting zero waste initiatives, and advancing green energy use
- CNY 80 million+ invested to restore coral reefs





Newly planted corals



Growing coral reefs in 2024



The number of coral species in the sea area has been increasing



The Bryde's whale, a national second-level key protected aquatic wild animal



Recycling kitchen waste into resources to create a zero-waste island

Youyu County: Successful practice of desertification control, afforestation, and ecological restoration for over 70 years

- 1969 km² with a population of 86,000
- The forest greening rate of the county jumped from less than 0.3% to 57%
- strong leadership of the government.
- efforts and extensive participation of the people in the county
- cultivating the "Youyu Spirit"
- tree planting strategies and methods adapted to local conditions







Before the restoration, desolate sandy land in the County



After the restoration, greening in the County, 2021

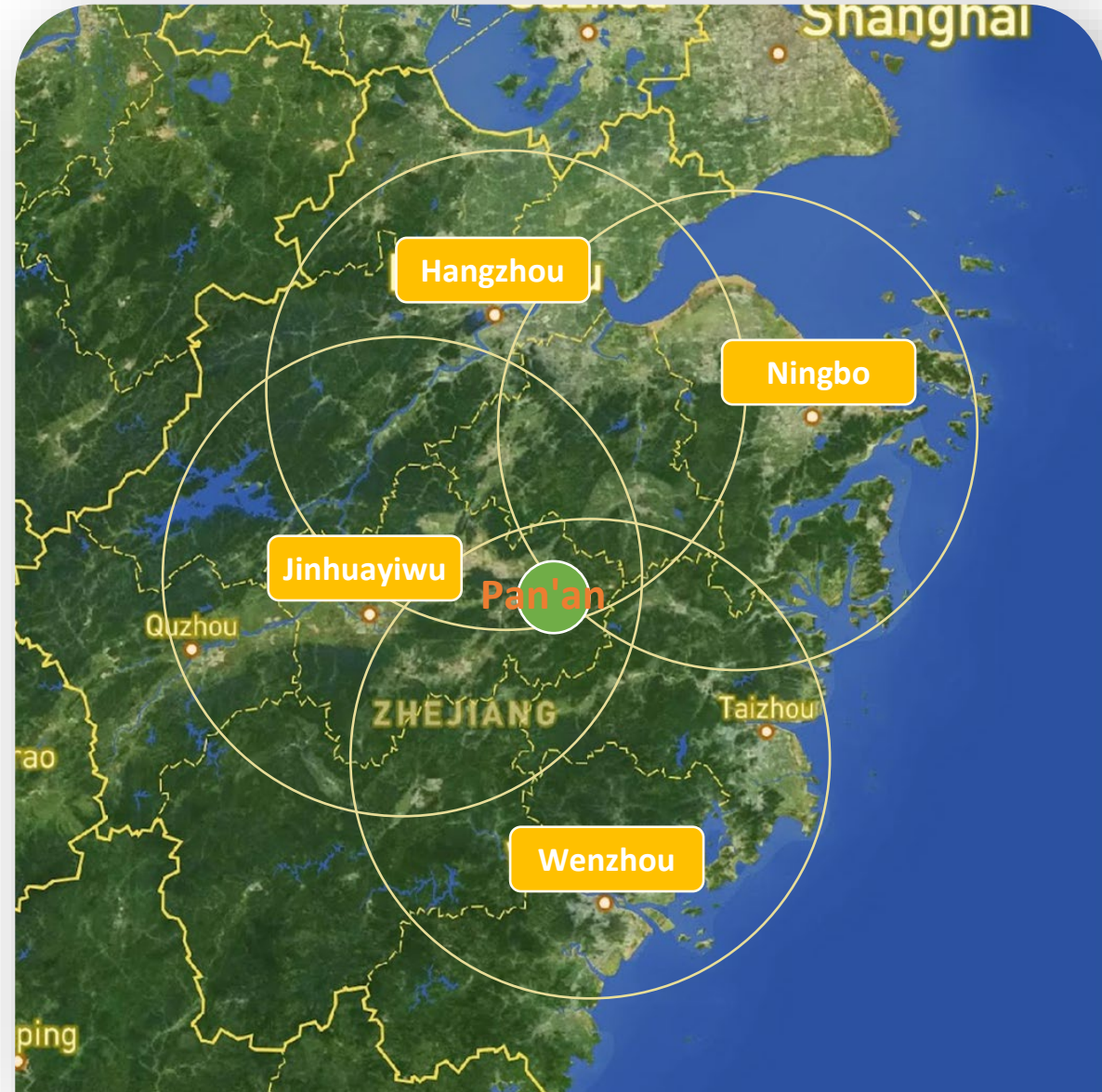




Nature-positive and sustainable city:


Pan'an County, Zhejiang Province

- 1194.74 km² with a population of 180,000
- Hometown of Chinese Medicinal Herbs
- Hometown of Chinese Shiitake Mushrooms
- Hometown of Famous Chinese Teas
- One of the counties in Zhejiang Province with the most intangible cultural heritage projects





From the satellite map, it is the greenest place in China's Yangtze River Delta region.

An aerial photograph of Juxi village, a traditional Chinese village nestled in a valley. The village features a dense cluster of buildings with dark, tiled roofs and white walls. The surrounding landscape is lush green, with rolling hills and mountains in the background. A thick layer of white mist or fog fills the valley, partially obscuring the lower parts of the village and the surrounding fields. The sky is bright blue with scattered white clouds. The overall scene is peaceful and scenic, showcasing the natural beauty and historical architecture of the village.

榉溪村

Juxi village

890多年历史

It has a history of more than 890
years to date



Confucius Family Temple, one of the only three Confucius Family Temples in China

An aerial photograph of Zhushan village, showing a cluster of traditional Chinese buildings with tiled roofs. The village is situated on a hillside, with a river and a bridge visible to the right. The foreground shows a stone wall and a small pavilion-like structure. The background features green fields and more modern buildings.

朱山村

Zhushan village

1200多年历史

It has a history of more than 1200
years to date



Preserving traditional aesthetics during village renovations



悬崖村

Xuanya village

全国首个地质文化村

The first geological culture village in the country

Utilize local materials and integrate with nature

乌石村

Guantou village

浙江省农家乐第一村

The top village for rural homestays
(Nongjiale) in Zhejiang Province, China



A lifestyle scene following the joint development of Traditional Chinese Medicine (TCM) and wellness



**A thriving industry
is essential for
making rural areas more vibrant**

Cultural and sports activities attract visitors to the countryside



Thank you!

Christine Lian HE

Global Forum on Human Settlements (GFHS)

christine.he@igcity.org

<http://www.gfhsforum.org/>