

International Partnership for Expanding  
Waste Management Services of Local Authorities

# Setting IPLA into Action Benefits and Opportunities

Prasad Modak

12 May 2011



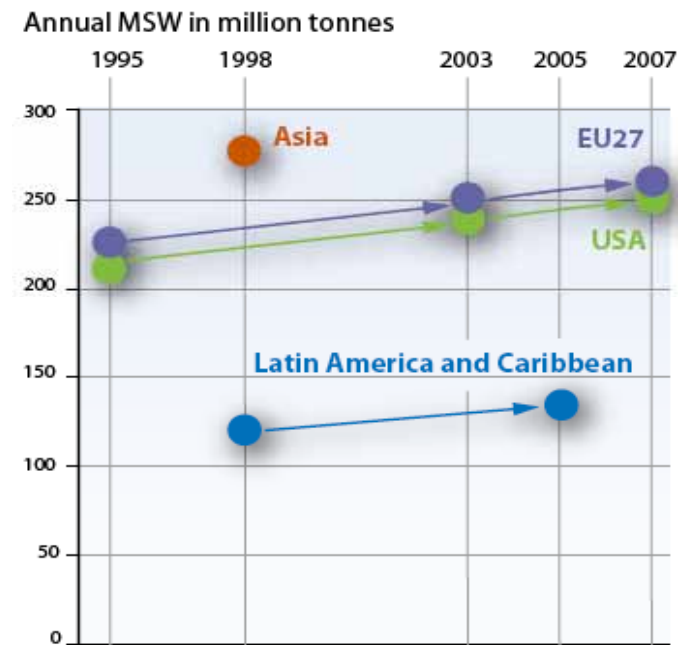
Building Partnerships for Moving Towards Zero Waste  
A Side Event for CSD19

# Structure of Presentation

- Why IPLA?
- Vision and Mission
- Structure of IPLA
- Stakeholder Benefits
- Operational Arrangements
- IPLA Web Portal
- Registrations showing interest and commitment

# Challenges in Waste Management

- Increasing waste volumes and complexity
- Differing composition and characteristics in different regions of the world
- More of an urban-centric problem
- Adverse impacts on human health and ecosystem
- Capacity constraints of Local Authorities (LAs) for implementation
- Less stakeholder involvement
- Economic value of waste not fully understood as a resource



Source: UNEP 2011

# Challenges to LAs

- Waste related issues given low priority
- Poor planning of waste management infrastructure
- Little or no knowledge transfer between LAs
- Inadequate training, especially to handle new waste streams
- Relatively minor fraction of municipal budget allocated for waste management
- Inappropriate spending - more than 50% of municipal waste budget on labor and fuel for collection and transport, but still poor collection rates
- Recycling by largely informal sector
- Lack of experience on PPPs

# Challenges to LAs *(contd)*

- CDM advantage not adequately explored
- LAs not networked – even in the same country for sharing of experiences
- Access to technology, knowledge bases and expertise is low
- Institutional barriers – especially to practice innovative business models
- Poor revenue - Schemes such as user fee and taxes for waste management non-existent or too low

# Key Issues Highlighted at CSD-18



- Need to move towards a zero waste economy
- Special attention required for some types of wastes
- New and additional financial resources needed
- Partnership and International Cooperation  
indispensible
- Education and public awareness campaigns vital

# Why IPLA?

Enable networking between LAs on a global basis to

- Share experiences
- Connect with “eco-system” of key stakeholders
- Identify partners and financial mechanisms for appropriate waste management infrastructure
- Create a practice oriented knowledge platform for action
- Set benchmarks and good practices
- Influence policy frameworks and support enforcement of laws and regulations

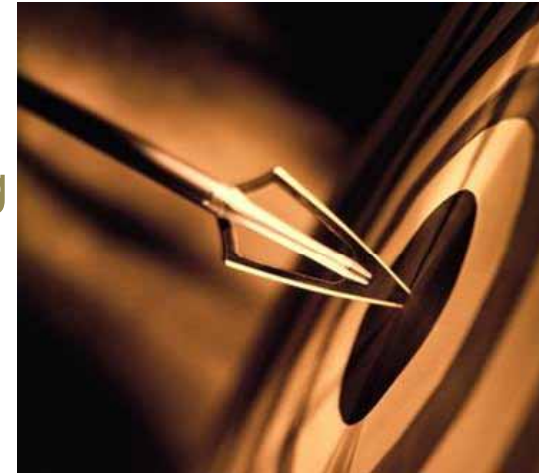
IPLA is not just a problem solving platform  
but an opportunity platform

IPLA is LA focused  
practice oriented  
network, targeted  
specifically for  
action on the ground

# IPLA's Vision and Mission

## Long term vision

To facilitate expansion of waste management services worldwide by working with partners such as governments, business, finance and civil society



## Mission Statement

To share knowledge, communicate across national boundaries and work to spread best practice in order to accelerate the uptake of waste related infrastructure and services at various stages of waste management such as avoidance, prevention, minimization, segregation, collection, transport, recycling, recovery, reuse treatment and disposal.



# Proposed *Eco-System* of IPLA



# Stakeholder Benefits

- [Local Authorities \(LA\) – The Focus](#)
- [Knowledge based Institutions](#)
- [Technology and service providers](#)
- [NGOs/CBOs and Waste Picker Associations](#)
- [Financing Institutions](#)
- [Industry](#)
- [Provincial and State level urban departments](#)

# Local Authorities – The Focus



## Possible Contributions

Data on waste generation,  
Project information, Ground  
level experience, Policy and  
Regulations

## Potential "Take Aways"

Technology options encompassing 3Rs, National and International  
experience on policies and ISWM, Partnership models with private and  
informal sectors, Model contracts, Access to experts and expertise,  
Training modules, Guidance manuals



# Knowledge based Institutions

## Academia, Research and Training Institutions



### Possible Contributions

Distillation and dissemination of practical data, information and knowledge (DIK) on innovative and cost effective waste management options for avoidance, prevention and minimization as well as for recovery, reuse and recycling. Offer training modules

### Potential "Take Aways"

Identification of research areas, pilot projects and access to field data in collaboration of interested LAs



# Technology and Service Providers

## Possible Contributions

Provide information on cost-effective technology options, especially focusing on 3Rs



## Potential "Take Aways"

Access information on business opportunities, understand technology needs, form alliances for increasing coverage and competitiveness



# NGOs/CBOs and Waste Picker Associations



## Possible Contributions

bring together waste pickers for formalization of collection and recycling, conduct awareness creation and training on key waste management concepts such as waste avoidance, prevention, minimization, segregation and 3Rs; develop business models with LAs for ISWM and for commercializing waste-resource related innovations

## Potential "Take Aways"

Exchange experiences with other NGOs/CBOs and Waste Pickers Associations



# Financing Institutions

## Possible Contributions

Provide technical assistance, funding for projects and programmes at LAs; Promote innovative institutional, financial, business models such as PPP, PFI, community cooperatives and other revenue generation streams such as CDM (especially through dedicated carbon funds and using schemes such as PoA).



## Potential "Take Aways"

Identify quality projects/programmes and long term partners for investments, especially for replication, with high cost-effectiveness and sustainability.





# Industry



## Possible Contributions

Sponsor workshops, training and awareness programs for the LAs as part of CSR activity. Support 3R related thematic campaigns such as plastic free cities, practicing Extended Producer Responsibility (EPR) especially for e-waste and hazardous waste

## Potential "Take Aways"

Make improved impact of the CSR initiatives, Brand and increase visibility





# Provincial and State Level Urban Departments, National Governments



## Possible Contributions

Information and guidance on policy, regulatory frameworks and standards;  
Guide LAs in the institutionalization of the “informal sector” such as waste pickers especially in developing and transition countries.

## Potential "Take Aways"

Obtain feedback from stakeholders to formulate harmonized and comprehensive policy frameworks set benchmarks and standards

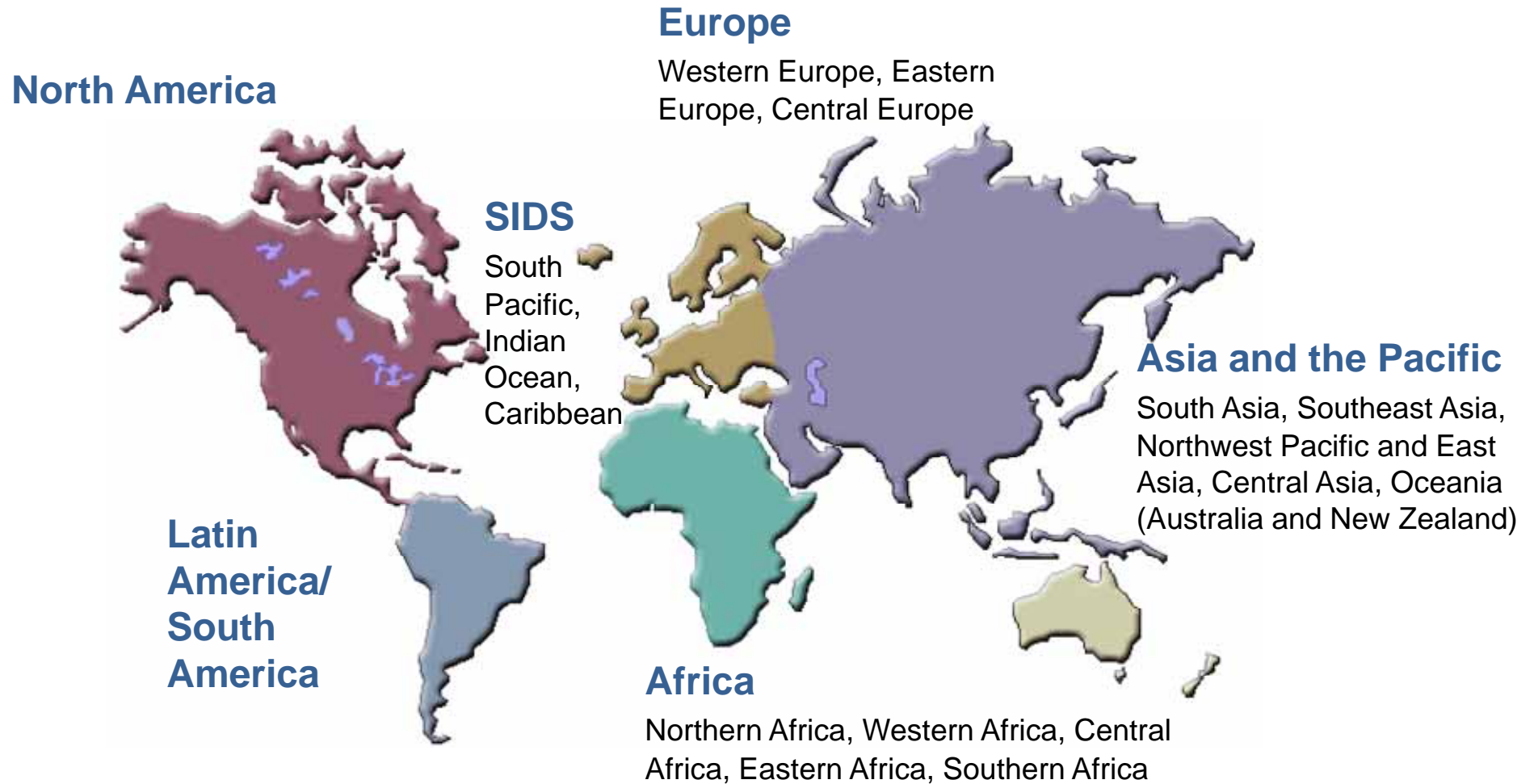


# IPLA International Secretariat

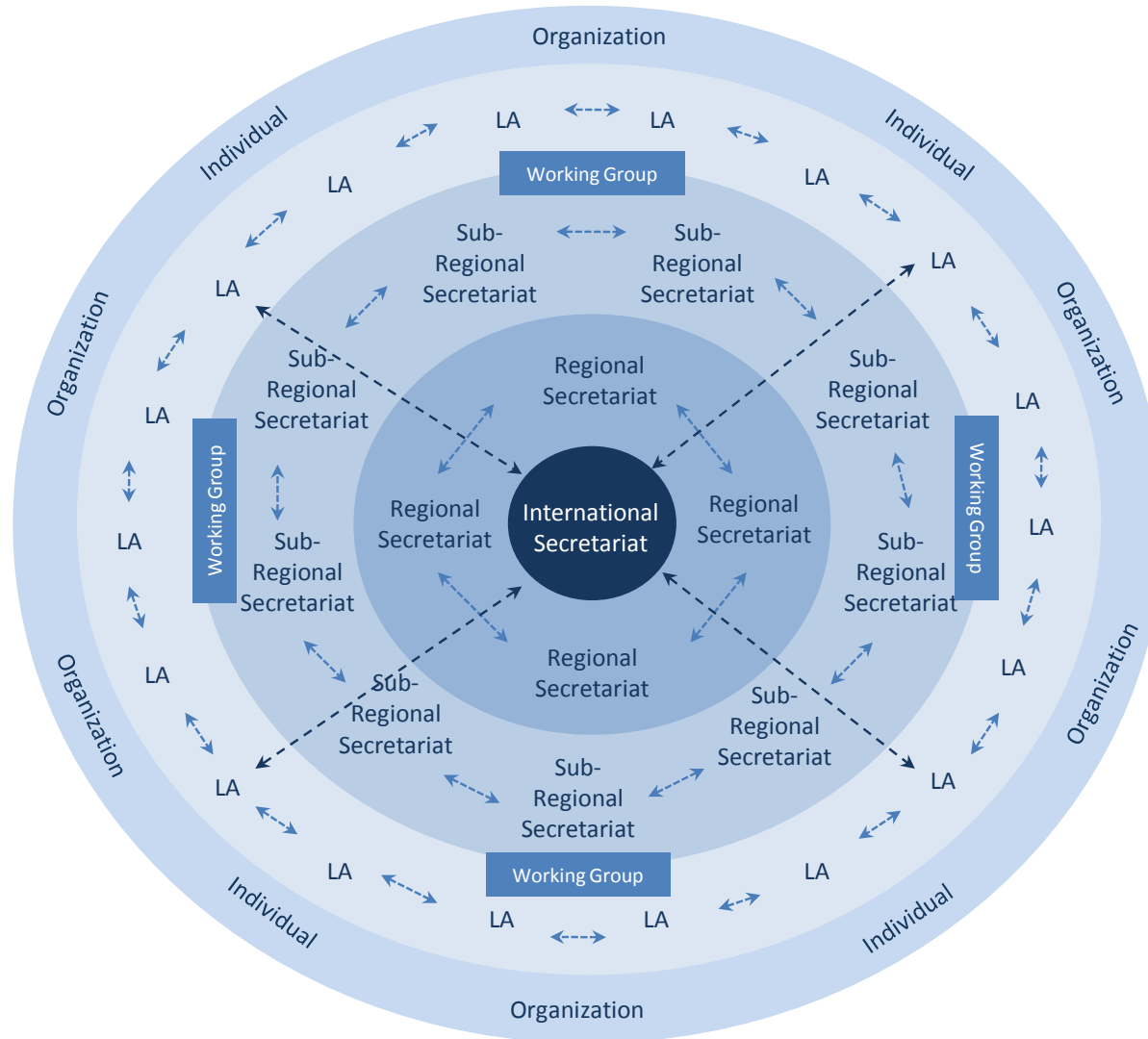


The International Secretariat  
International Partnership for Expanding Waste  
Management Services (IPLA)  
P.O. Box 4, Klong Luang  
Pathumthani 12120  
Thailand

# Global Coverage Represented through Six Regions



# Operational Arrangements



Non-hierarchical, Networked, and Interactive

# Home Page of IPLA Web Portal

Main Tab	Contents
Top Main Menu	Home, Updates, About IPLA, Activities, Networking, Training, News, Join IPLA, Contact Us
Registration Module	Users of five types - Local Authority, Technical Working Group Member, Individual/ Organization, Regional Secretariat, Sub-regional Secretariat
Display of site statistics	Latest Member Joined Latest Resource Uploaded Latest Discussion Topic Latest IPLA News Item Most Downloaded Resource Most Popular Blogpost Subscribe to IPLA News, RSS Feed
Bottom Menu	Sponsors, Copyright, Terms and Conditions, Privacy Policy

# Dynamic and Personalized Features

Main Tab	Contents
Login	FAQs, Sign out Registered Courses My Account Ask an Expert Search, Advanced Search Submit Resources to IPLA (with uploading feature) Discussion Forums Favorites - Resource , Discussion Topic, IPLA News, Blog Most Relevant - Resource , Discussion Topic, IPLA News, Blog Download History Payment History

Portal will emulate Social Networking Engines with advanced tools

# Administration Features

- Member Profile Master
- Manage Members
- Manage Roles
- Manage Access
- Manage Resources
- Manage Templates
- Manage FAQs
- Workflow
- Manage News
- Manage Blog
- Manage Discussion Forums
- Manage Training Modules
- Myspace Manager
- Manage Query Flow
- Email Manager
- Send News Letter
- Manage Experts
- Manage Payments

IL&FS, India has already expressed interest and commitment to sponsor the Web Portal

# Memberships – Open to All



1. Local Authorities
2. Technical Working Group Members
3. Individuals or Organizations
4. Sub-regional Secretariats
5. Regional Secretariats



# Online Registration

<http://emcentre.com/IPLARegistration.htm>



<input type="checkbox"/>	2%
--------------------------	----

We appreciate your interest to partner with the International Partnership for Expanding Waste Management Services of Local Authorities (IPLA).

IPLA focuses on networking the local authorities across the world, stresses on the link between waste and resources and aims to connect all key stakeholders through knowledge networks following the principles of Integrated Solid Waste Management (ISWM) and strategies such as Reduce, Reuse, and Recycle (3Rs).

IPLA is structured to represent a knowledge network that emphasizes practice. The Mission of IPLA is "to share knowledge, communicate across national boundaries, and work to spread best practice in order to accelerate the uptake of waste-related infrastructure and services at various stages of waste management such as avoidance, prevention, minimization, segregation, collection, transport, recycling, recovery, reuse treatment, and disposal".

If in full agreement with IPLA's mission and goal, you may complete and sign this Application Form and return it to the Partnership's International Secretariat at the address mentioned at the end of the form.

To provide more information than what could be entered in the space provided, you may have to first complete and submit this application form online and then mail the additional details along with your application no. to [environment@uncrd.or.jp](mailto:environment@uncrd.or.jp)

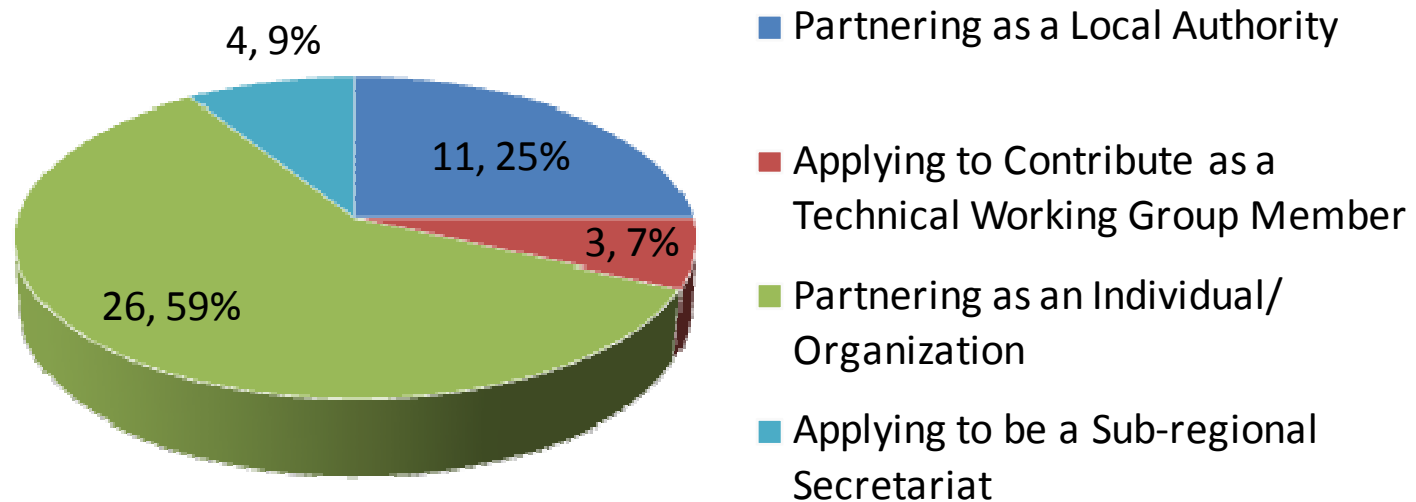
For any other clarifications, please contact [environment@uncrd.or.jp](mailto:environment@uncrd.or.jp) (for the period interim)

## 1. Please select a relevant category for applying to IPLA.

- Partnering as a Local Authority
- Applying to Contribute as a Technical Working Group Member
- Partnering as an Individual/ Organization
- Applying to be a Regional Secretariat
- Applying to be a Sub-regional Secretariat

# Registrations received so far...

46 registrations received online (April 28, 2011)



# Thank you

Questions?

[pmodak@vsnl.com](mailto:pmodak@vsnl.com)

[www.emcentre.com](http://www.emcentre.com)

# Existing Waste Management and Sustainability Alliances



## Possible Contributions

Provide/update knowledge, case studies, access to experts, experience with waste related policies, regulations and standards

## Potential "Take Aways"

Reduce overlaps, Draw from knowledge pool and practice experience at LAs to identify areas that require more focus



# Synergies with other initiatives



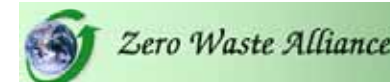
Seek expertise to ensure prevention of transboundary movement of toxic waste across its member countries



Share 3R-related best practices/experiences policy and capacity issues



UNEP's Global Partnership on Waste Management



Seek management support, training, education and technical services



Share information about trade of recyclables reclaimed in waste streams



Seek expertise on electronic asset disposition services



UNDP's Public-Private Partnerships for Service Delivery (PPPSD)



Share experience in the field with WIN's local authority waste officers and members

# International Partnership for Expanding Waste Management Services of Local Authorities (IPLA)



AIT, the Global Secretariat, and UNCRD seeks partnership and collaboration with relevant organisations including local authorities, governments, private sector, international organisations, donor agencies, and others, to expand and implement IPLA.