

# A WEB PORTAL FOR INTERNATIONAL PARTNERSHIP FOR EXPANDING WASTE MANAGEMENT SERVICES OF LOCAL AUTHORITIES



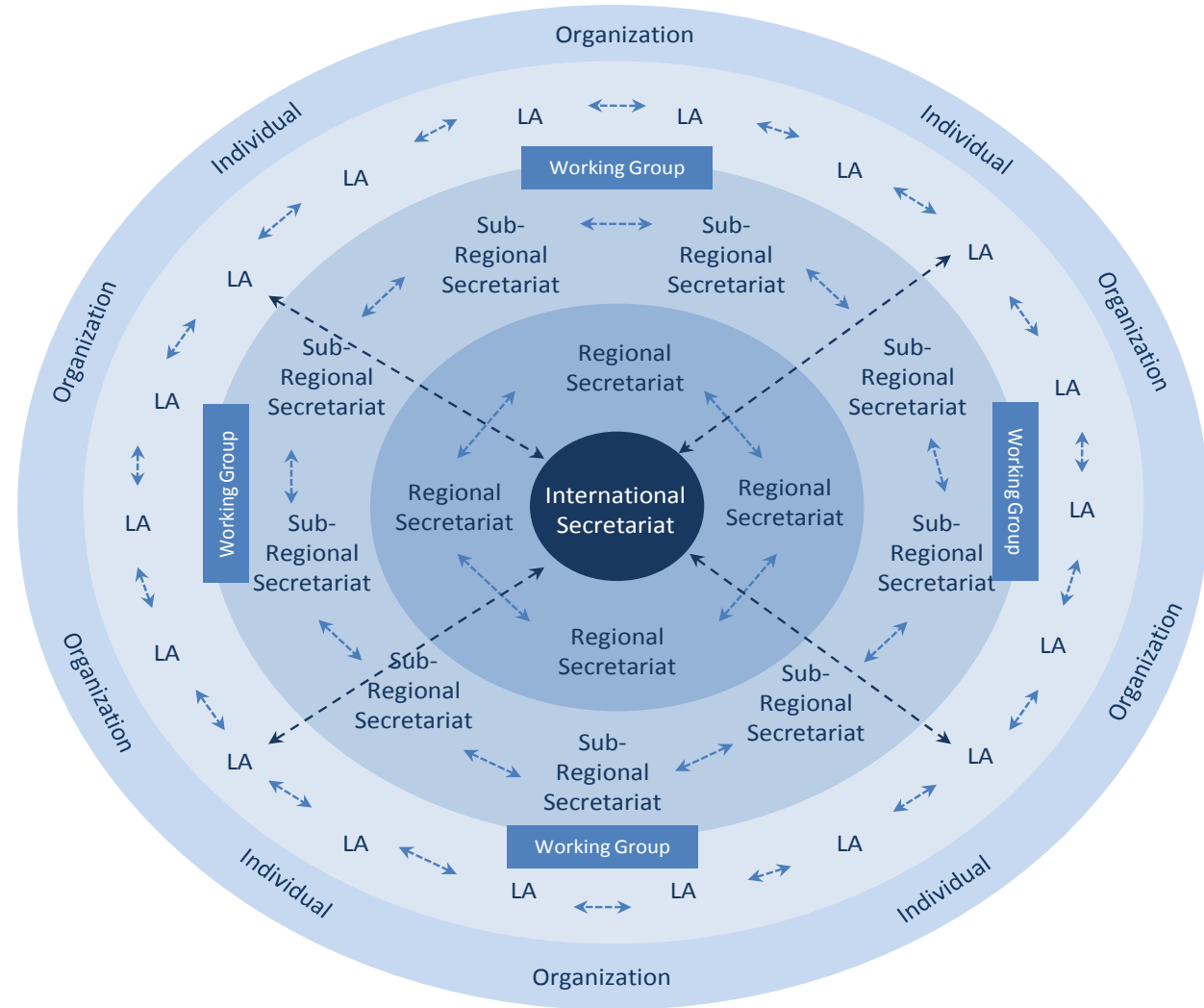
Presented by  
Rushikesh Bandekar  
VP – Technology Products and Solutions  
IL&FS (Education and Technology Services)  
[rushikesh.bandekar@ilfsets.com](mailto:rushikesh.bandekar@ilfsets.com)

# Why a web-portal ?

- IPLA's success rests on the ability of its Stakeholders, particularly LAs, to network efficiently and effectively
- A web portal will ensure faster, hassle-free and effective networking, easy accessibility, communication and information and best practices sharing, between the LAs and other stakeholders.



# Multi-level Networking



# IPLA Web Portal

---

## Key Ideas

# Landing (Home Page)

Section	Proposed Contents
Home	<ul style="list-style-type: none"><li>• Welcome note</li><li>• Important Events and News</li><li>• Login</li></ul>
Updates	<ul style="list-style-type: none"><li>• Global Events and Press Releases</li></ul>
About IPLA	<ul style="list-style-type: none"><li>• Background, Mission and Objectives</li><li>• Structure of IPLA</li><li>• FAQ</li></ul>
Networking	<ul style="list-style-type: none"><li>• Featured LA, Tender Notices, Discussion Forums, Blog</li></ul>
Resources	<ul style="list-style-type: none"><li>• Guidance Manuals, Tool Kits, Case Studies, Technology Factsheets</li><li>• Searchable Database of Experts and Vendors</li></ul>
IPLA News	<ul style="list-style-type: none"><li>• News items with Subscription options</li></ul>
Join IPLA	<ul style="list-style-type: none"><li>• Benefits and Types of partnerships</li><li>• Registration Details</li></ul>
Activities	<ul style="list-style-type: none"><li>• Current engagements</li><li>• Projects and Programs</li><li>• Achievements</li></ul>
Contact Us	<ul style="list-style-type: none"><li>• Address and Contact for International, Regional and Sub-regional Secretariats</li></ul>
Sponsors	<ul style="list-style-type: none"><li>• Details on various sponsors of IPLA</li></ul>

# Multiple Stakeholder Access

## STAKEHOLDERS

- Local Authorities
- Sub-regional Secretariats
- Regional Secretariats
- International Secretariat
- Technical Working Group Members
- Individuals or Organizations

- Depending on the stakeholder, functions and access to content would be provided
- Both open registration and multiple levels of memberships in closed and open formats would be available
- Control on roles and responsibilities through various levels of engagements with the portal, community ratings and status of the individual in the LA.

# Content Publishing and Management

- Content tagging with multiple tag clouds for relevance
- Customizable taxonomy
- Official content publishing to have workflows
- Rating, Reviews and Moderation to be supported
- Multiple content formats to be supported
- WYSWYG content publishing
- Archiving



# Supported Content Templates

- Blogs
- Posts
- Events
- News
- Documents
- Articles
- FAQs
- Announcements
- Image library
- Surveys



# Key Ideas

- LA profiling and matching to help classify LA into common clusters with matching demographics, geography, and other common elements that will help to create member clusters for effective KM
- Support multiple languages (Unicode) for content publishing
- Initiate official and un-official (community based) surveys
- Post queries to experts and receive the expert advice as response (paid or free)
- LA pages to be managed by official LA members
- Efficient search engine

# Milestones for IPLA Phase I

- Presenting visual prototypes to AIT
- Deciding on preferred prototypes
- Portal Implementation
- Testing and Quality Management
- Deployment on AIT server
- Training and Support
- Maintenance
- Proposal for IPLA Phase II

**Thank You**