



# Nagoya City's Challenge for Environmental Preservation

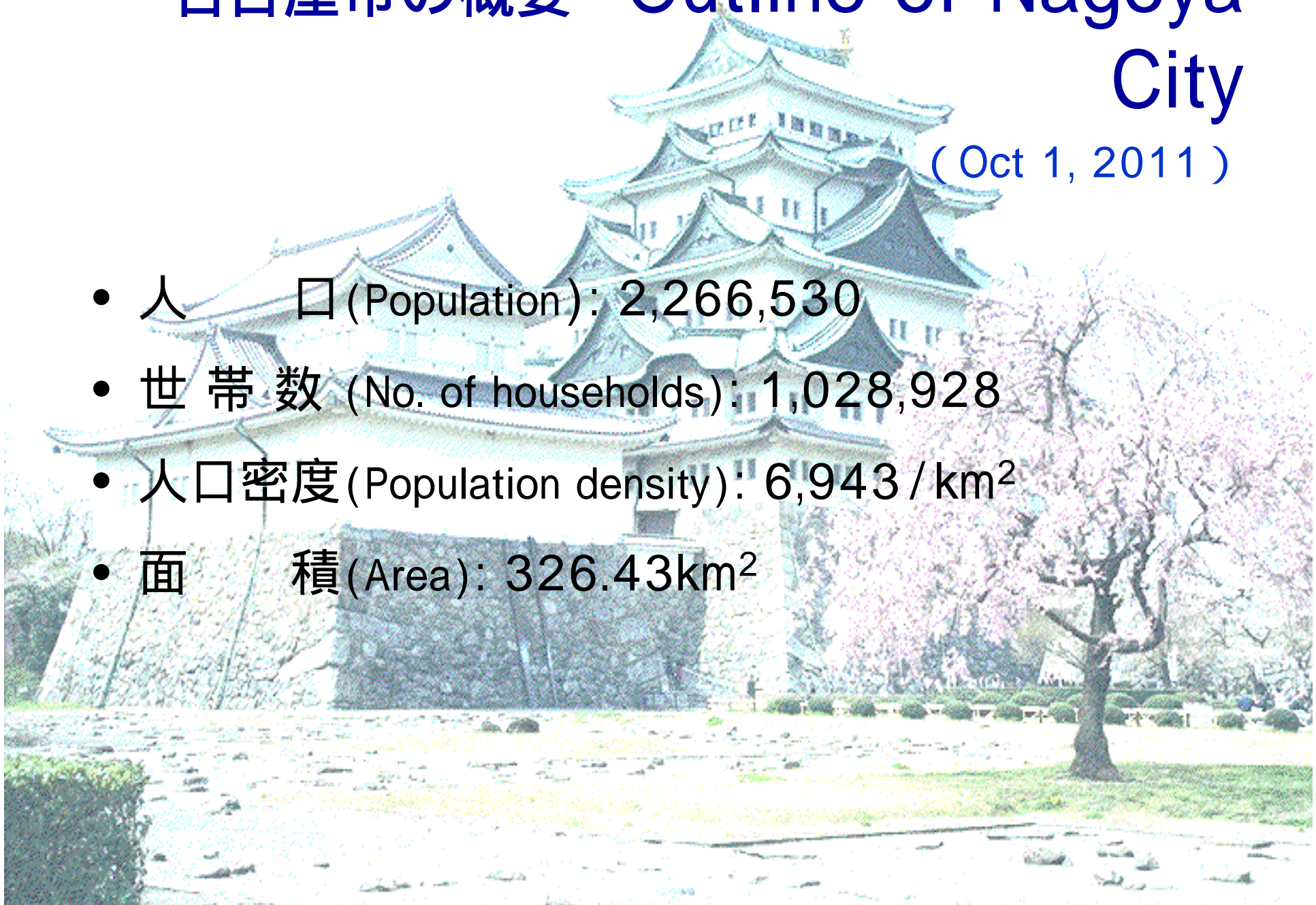
Mr. Toshitaka TAKAGI, Director  
Environmental Planning Department  
Environmental Affairs Bureau, City of Nagoya



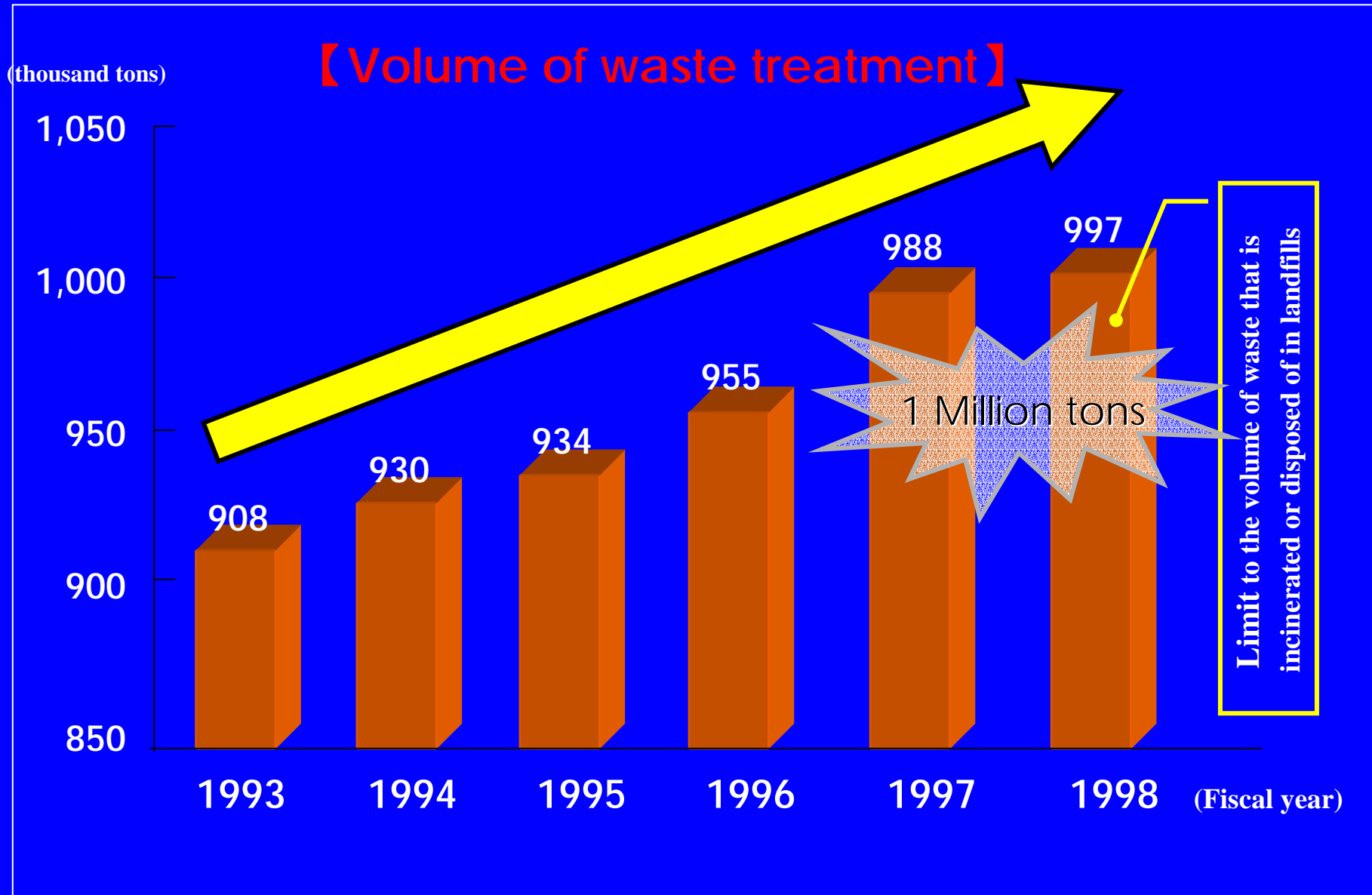
# 名古屋市の概要 Outline of Nagoya City

(Oct 1, 2011)

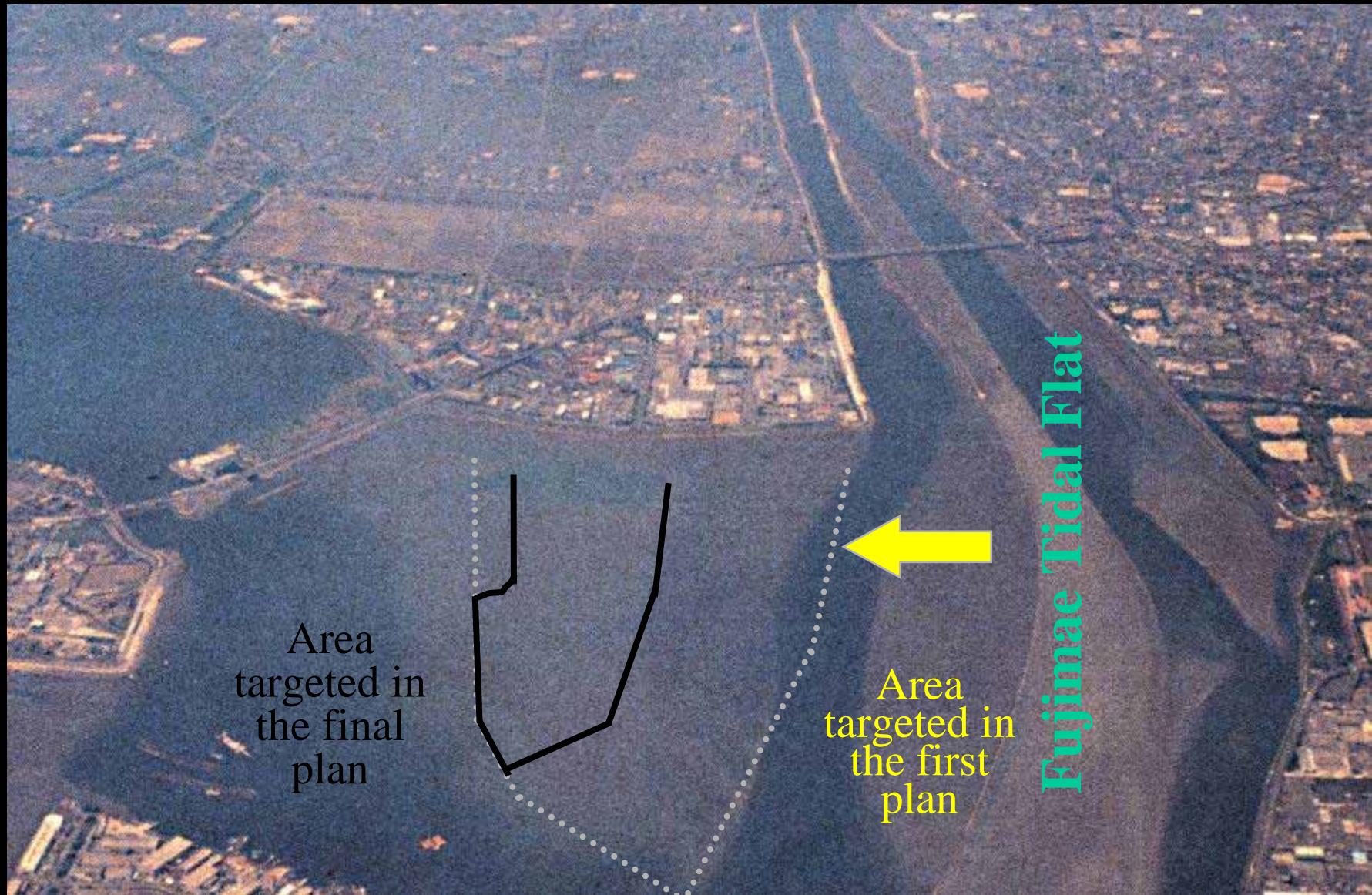
- 人口 (Population): 2,266,530
- 世帯数 (No. of households): 1,028,928
- 人口密度 (Population density): 6,943 / km<sup>2</sup>
- 面積 (Area): 326.43km<sup>2</sup>



# Increasing volume of waste treatment







Fujimae Tidal Flat and the area planned as landfill



## PR activities and information dissemination in preparation for the start of collection of newly designated recyclables (FY2000)

- Dissemination of information in advance and holding explanatory meetings
  - Distribution through quarterly newsletter, Nagoya
  - Holding about 2,300 explanatory meetings in the local community (June-July)
  - 24% of all households participated in the meetings



Explanatory meeting  
in a local community

# Local residents engaged in sorting and recycling waste



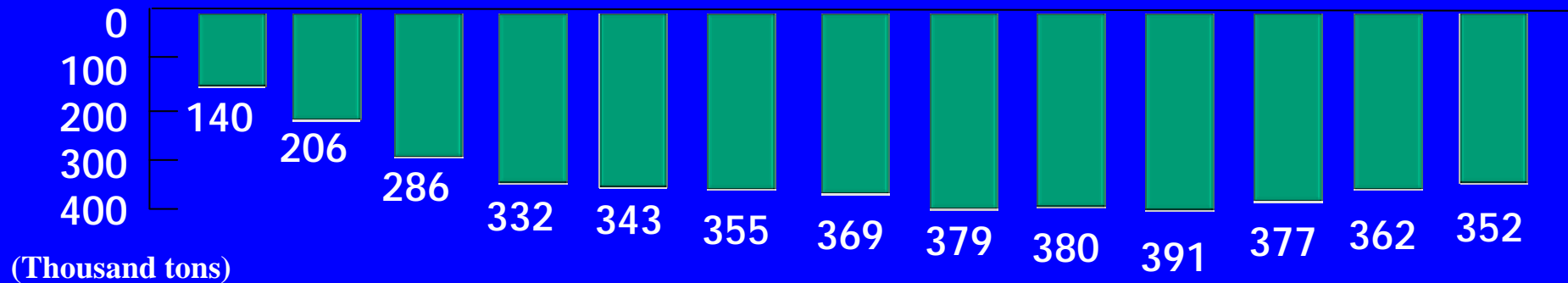
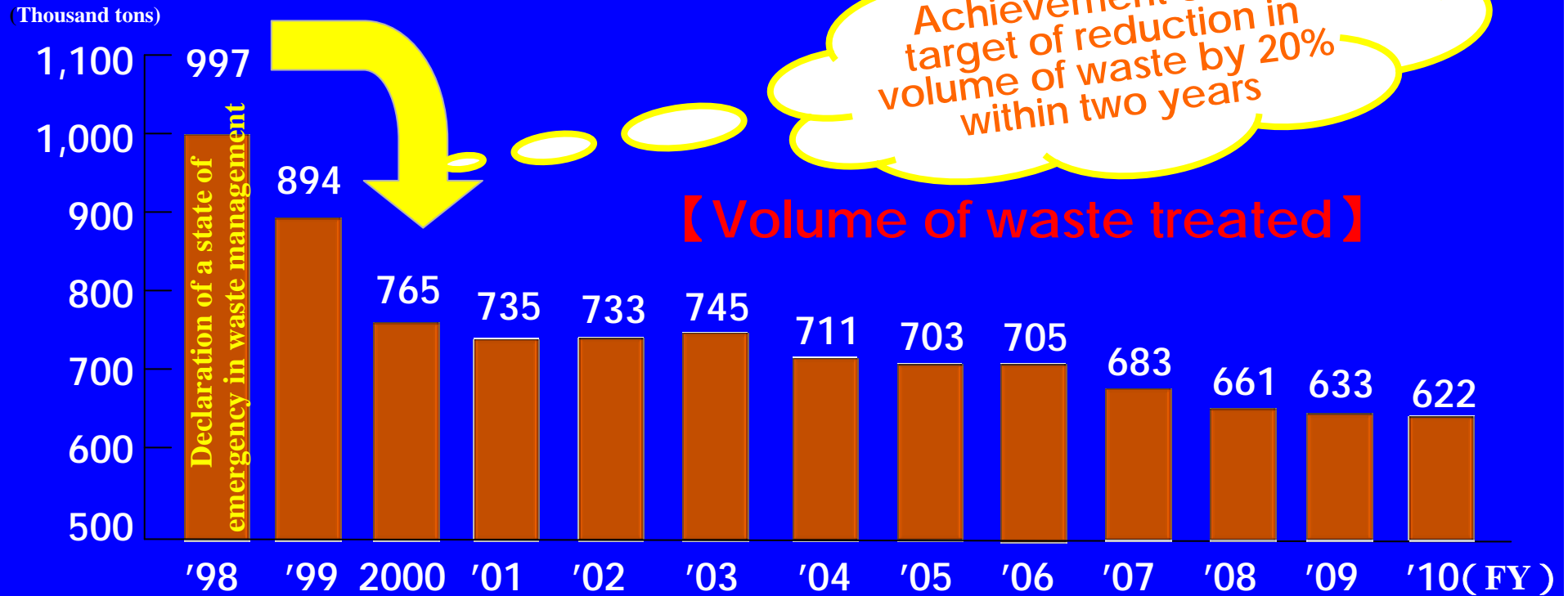
Residents and community officials involved in recycling





Resource recovery of used paper by the residents

# Outcome of the emergency declaration on waste management







# COP 10

(The 10<sup>th</sup> Meeting of the Conference of the Parties to the Convention on Biological Diversity)

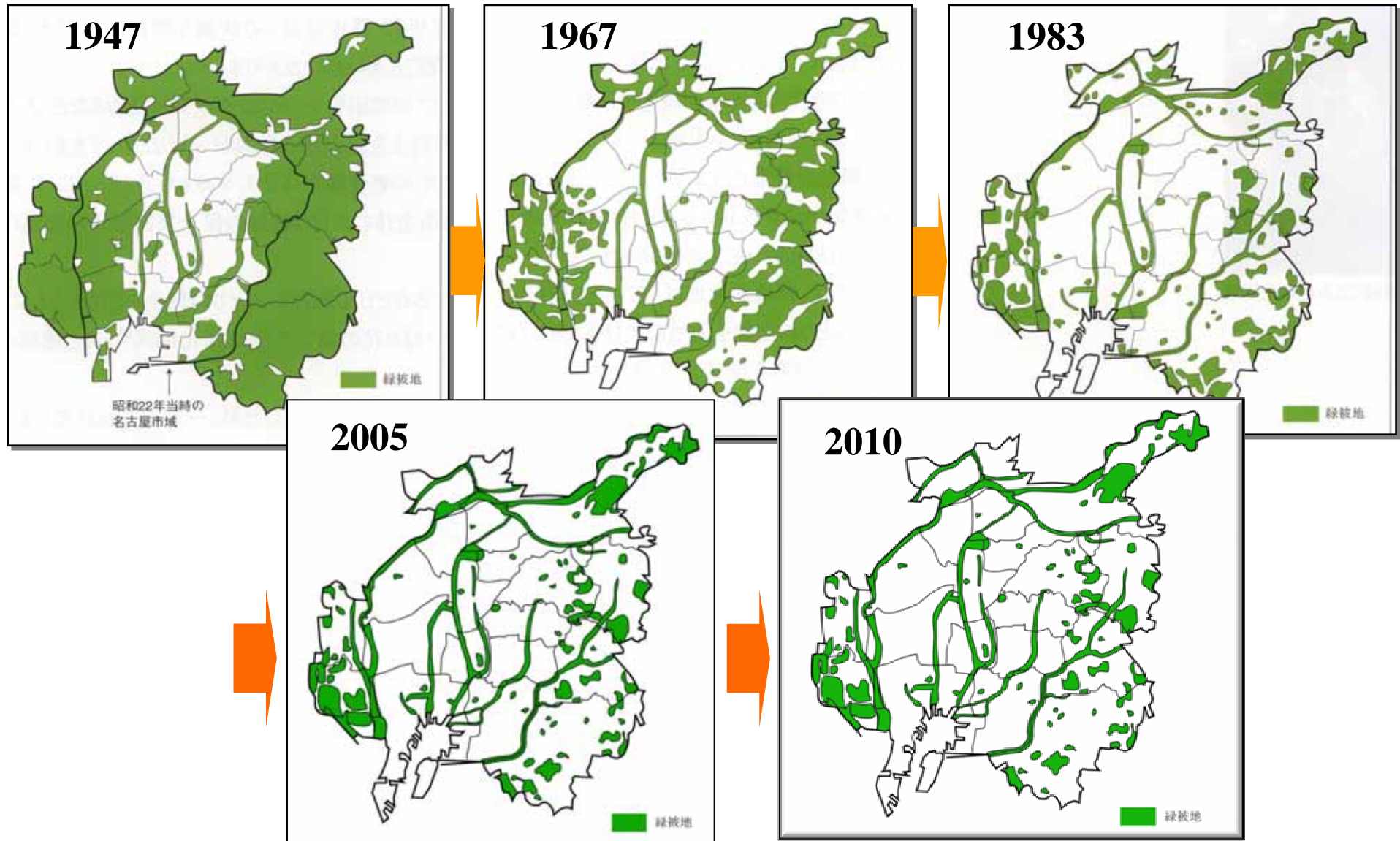


# City Biodiversity Summit 2010





# Transition of Greening Ratio in Nagoya City



# The system of Greening area in Nagoya

## New Challenge: The system of Greening area

The system makes it obligatory for developers to devote a certain percentage of their development area to greenery when constructing a new building in the area, which is, in principle, larger than 300m<sup>2</sup>. As a pioneer, Nagoya City started the system in October 2008.

Image of the  
Effect of the system of Greening area



Before



After



# The system of Greening area in Nagoya

The system of Greening area based on Urban Green Area Law  
and Green Community Development Ordinance

Target

Minimum Green Coverage Ratio (Site Area)	Permitted Max. Building Coverage Ratio
20% (Larger than 300m <sup>2</sup> )	50% or less than 50%
15% (Larger than 300m <sup>2</sup> )	Over 50%, under 60%
10% (Larger than 500m <sup>2</sup> )	60% or more than 60%

Achieved results (30 Oct 2008 – 30 March 2011)

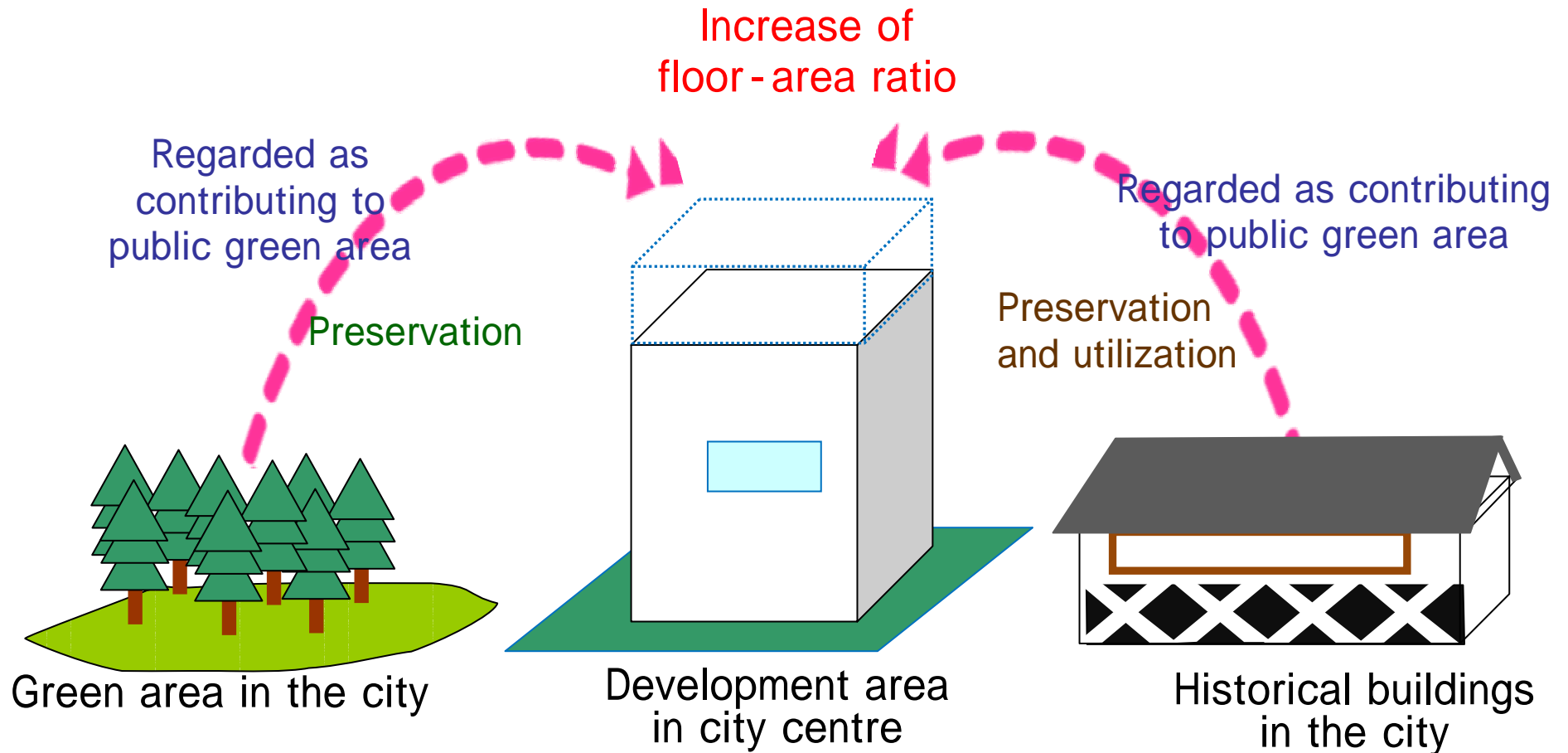
Site Area	695.6ha
Green Area	103.5ha
Green Coverage Ratio	14.9%

Example of parking lot



Example of Green Generation System

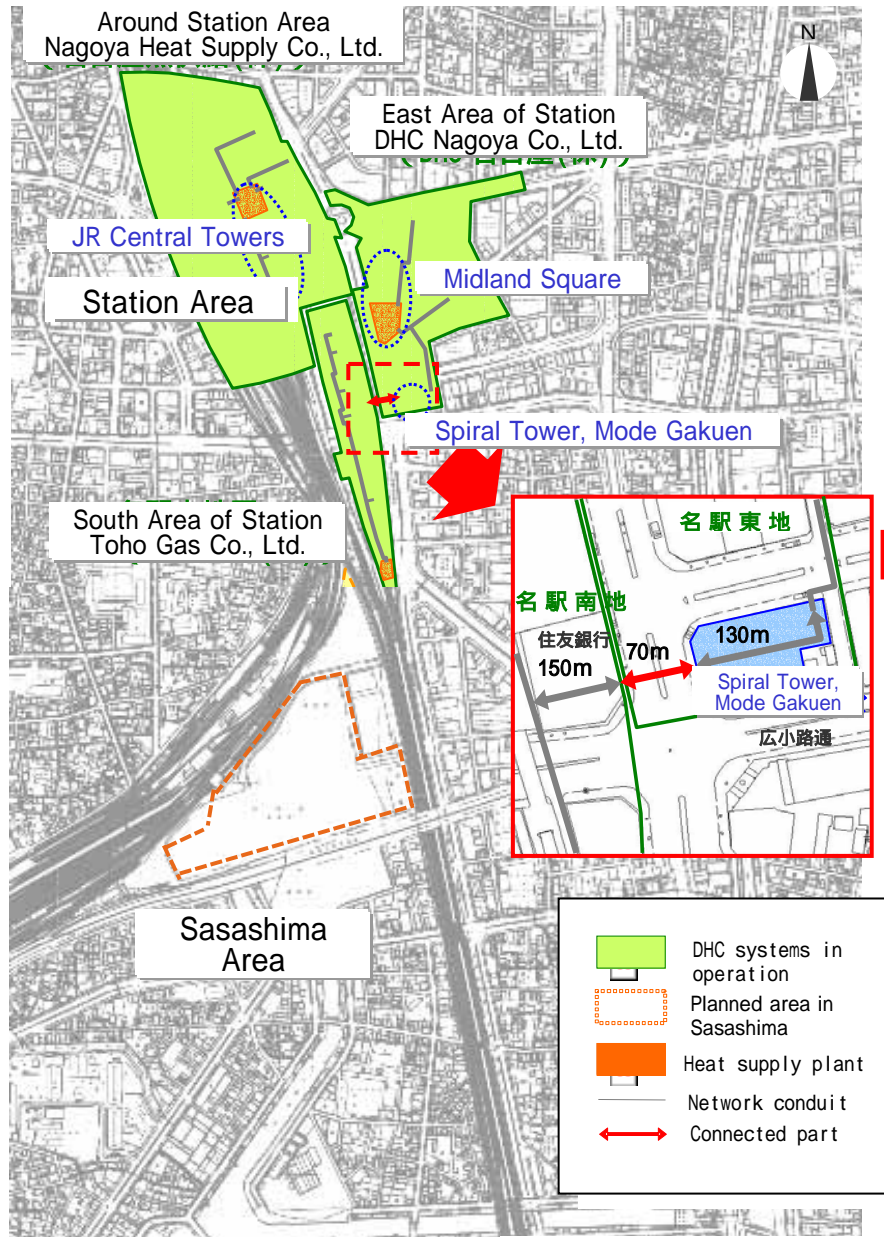
# Greenery Preservation using Urban Regeneration Special Areas (Spatial reorganization between the districts)



Note: Urban Regeneration Special Areas is designated by city planning as a intensive utilization district whose usage, volume, height, and layout are regulated.

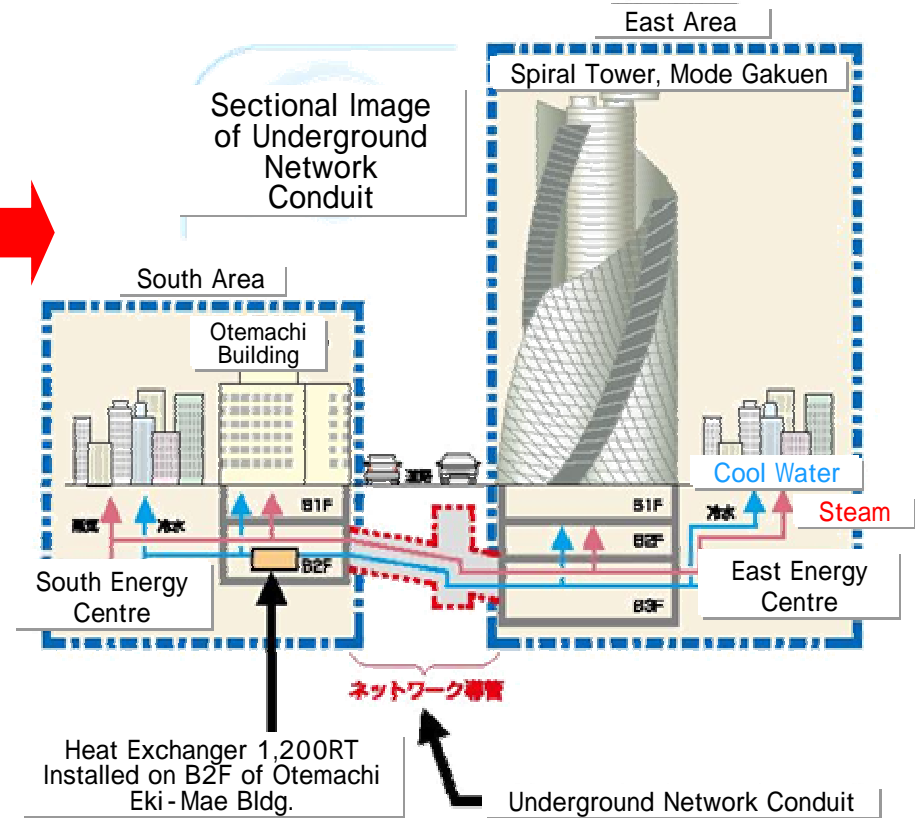


# Networking of District Heating and Cooling (DHC) Systems around Nagoya Station ( Unprecedented challenge between different business )



## DHC network (June 2008)

Achievement of Fiscal 2010	
Energy consumption	9.5%
CO <sup>2</sup> emissions	10.7%



Thank you for your kind attention!

