



Regional integration experience of the City of Bogota D.C.



ALCALDÍA MAYOR
DE BOGOTÁ D.C.

**Planning Secretariat of the City of Bogota
Nagoya - Japan, 28th May 2013**

SECRETARÍA DE PLANEACIÓN

CONTENTS



1. Role of the City of Bogota within the regional and national context

- 1.1. Facts about Bogota
- 1.2. Social, economic and environmental context

2. The regional integration strategy of the City of Bogota

- 2.1. Policy framework of the City of Bogota
- 2.2. Regional integration approach

3. Final Remarks



ALCALDÍA MAYOR
DE BOGOTÁ D.C.

SECRETARÍA DE PLANEACIÓN

BOGOTÁ
HUMANANA

1. Role of the City of Bogota within the regional and the national context



ALCALDÍA MAYOR
DE BOGOTÁ D.C.

SECRETARÍA DE PLANEACIÓN

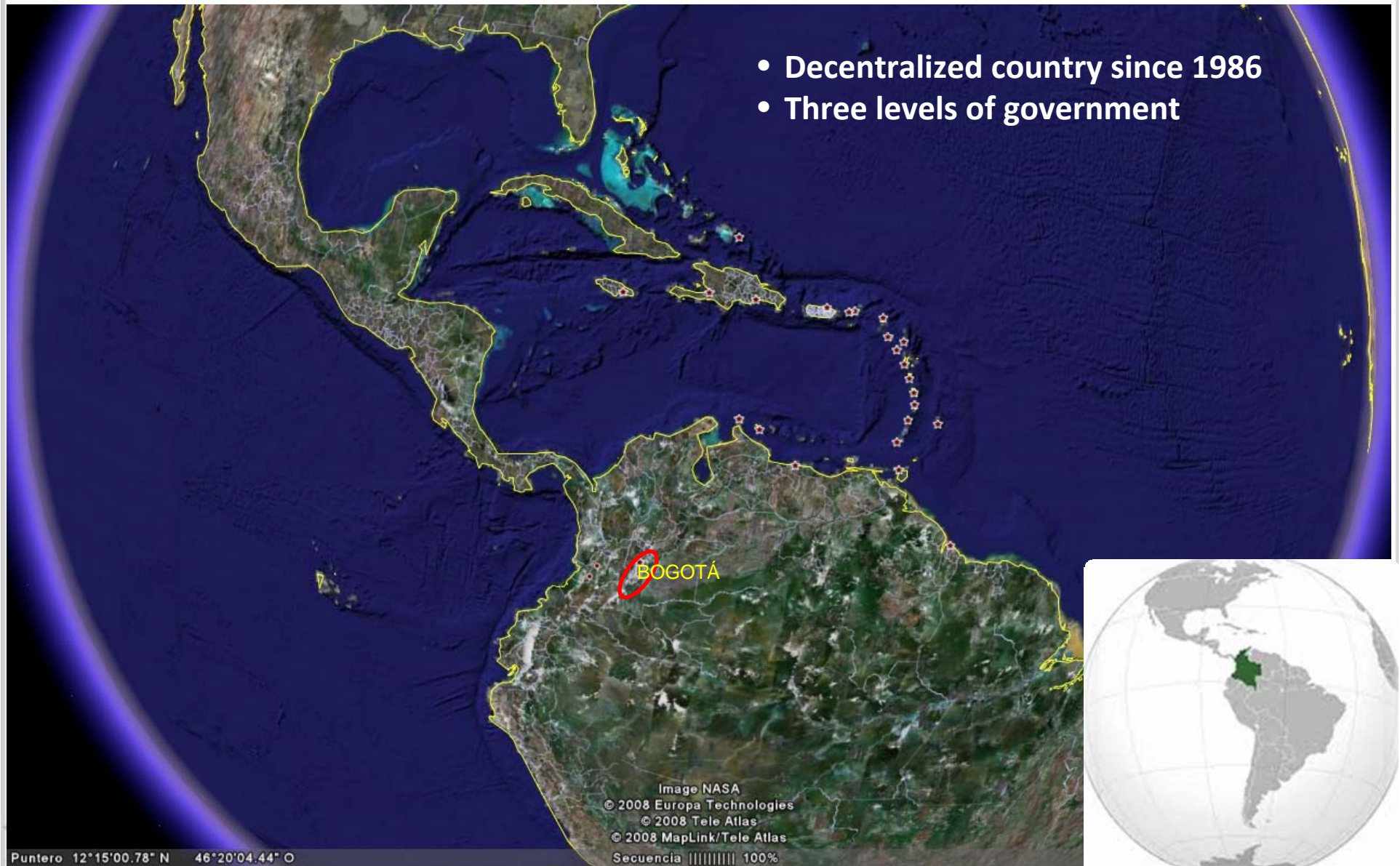
The Bogotá Humana logo, featuring the word "BOGOTÁ" in multi-colored letters (blue, orange, green, red) above the word "HUMANA" in black, with a heart symbol replacing the letter 'A'. The logo is partially obscured by a white, curled corner effect.

BOGOTÁ
HUMANA

1. Role of the City of Bogota within the regional and the national context

1.1. Basic information about Colombia

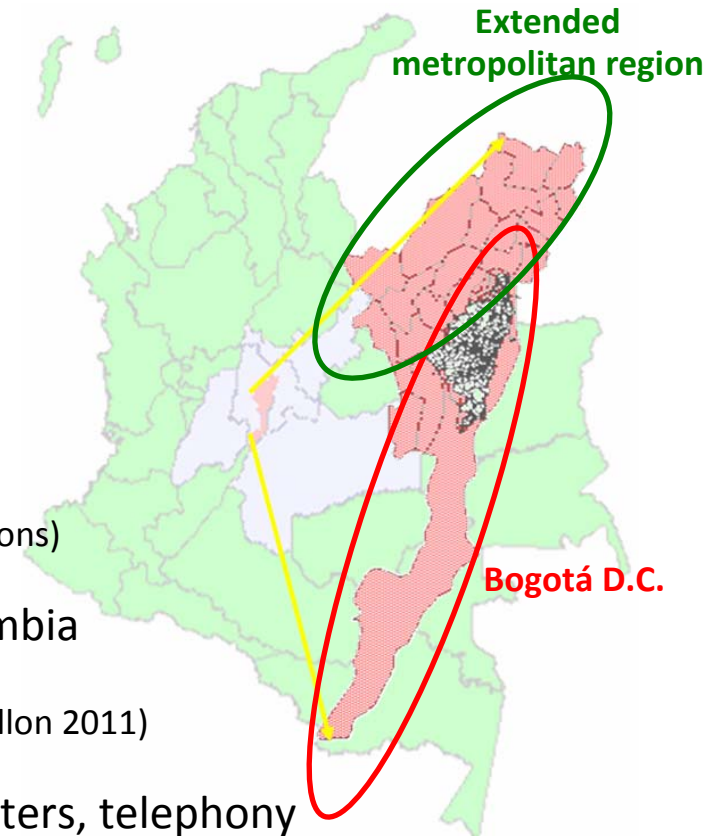
- Decentralized country since 1986
- Three levels of government



1. Role of the City of Bogota within the regional and the national context

1.1. Facts about Bogota

- ✓ **16%** of the national population (7,7 million)
- ✓ **26%** of the national GDP
- ✓ **19%** of national formal employment
- ✓ **29%** of the national market size
- ✓ **First** in Universities and research institutes
- ✓ **First** cargo Airport in Latin America (617.5 thousand tons)
- ✓ **Second** in non-traditional goods exports in Colombia
- ✓ **Third** passengers Airport in Latin America (20.3 million 2011)
- ✓ **Highest rates** of public services, internet, computers, telephony
- ✓ Bogotá's GDP (U.S. \$ 89 million) is **higher than** countries like Ecuador, Bolivia, Paraguay and Uruguay
- ✓ **260** inhabitants per Ha.

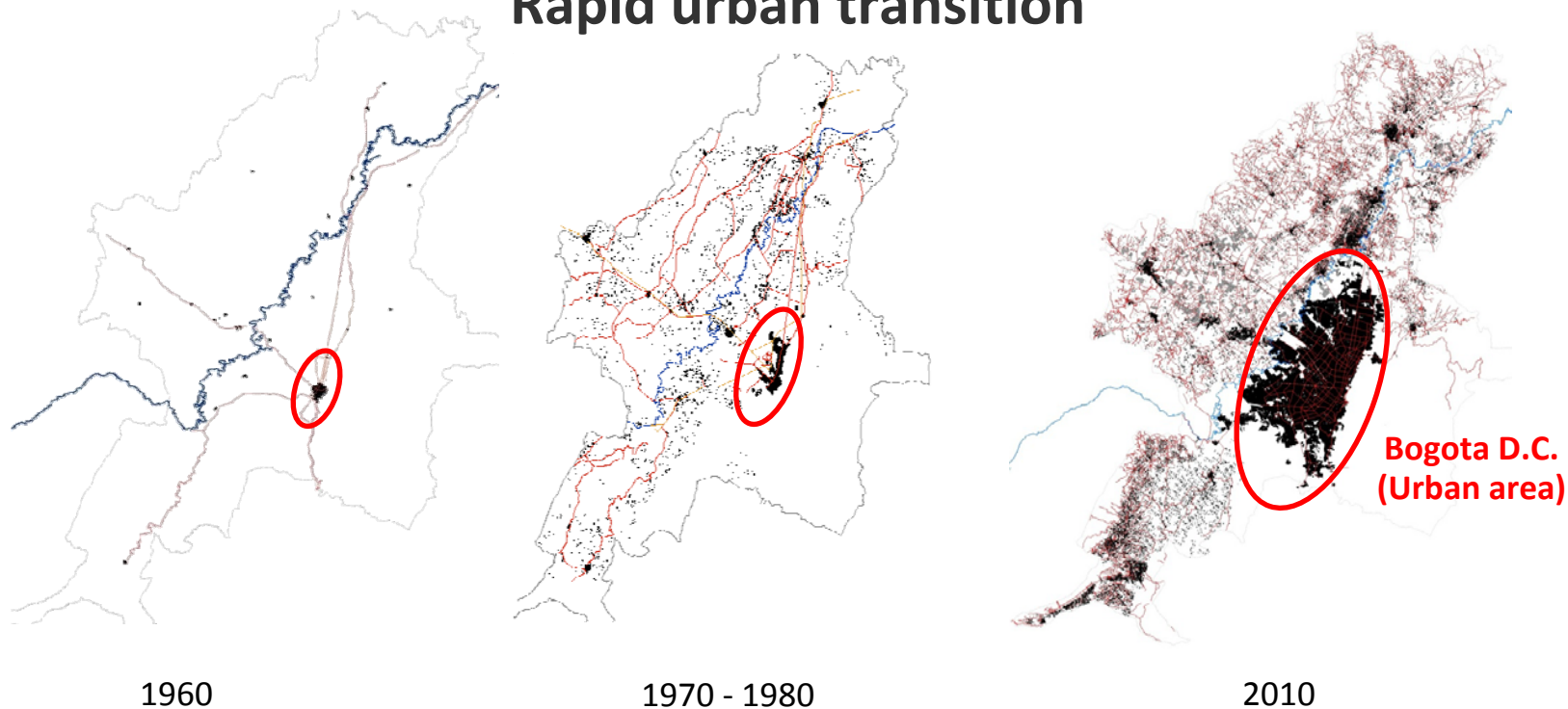


ALCALDÍA MAYOR
DE BOGOTÁ D.C.

1. Role of the City of Bogota within the regional and the national context

1.2. Social, economic and environmental context

Rapid urban transition



The regional urban land raised 30 times in 50 years

Bogotá's population growth:

1938 (325.650) **1964** (1'697.311) **1973** (2'855,065) **2013** (7' 700.000)

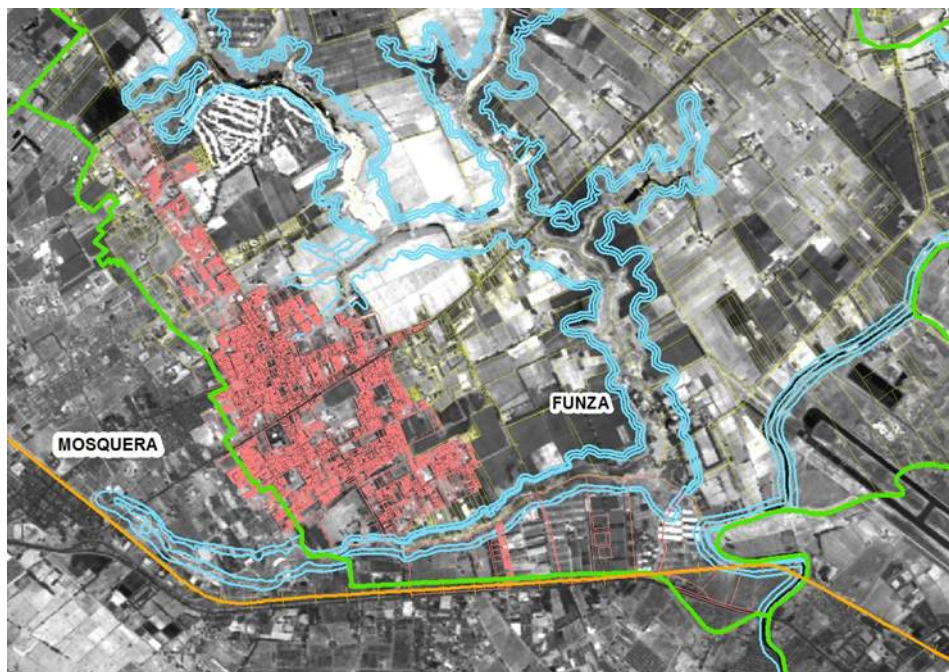


Source: Secretariat of Departmental Planning – Cundinamarca

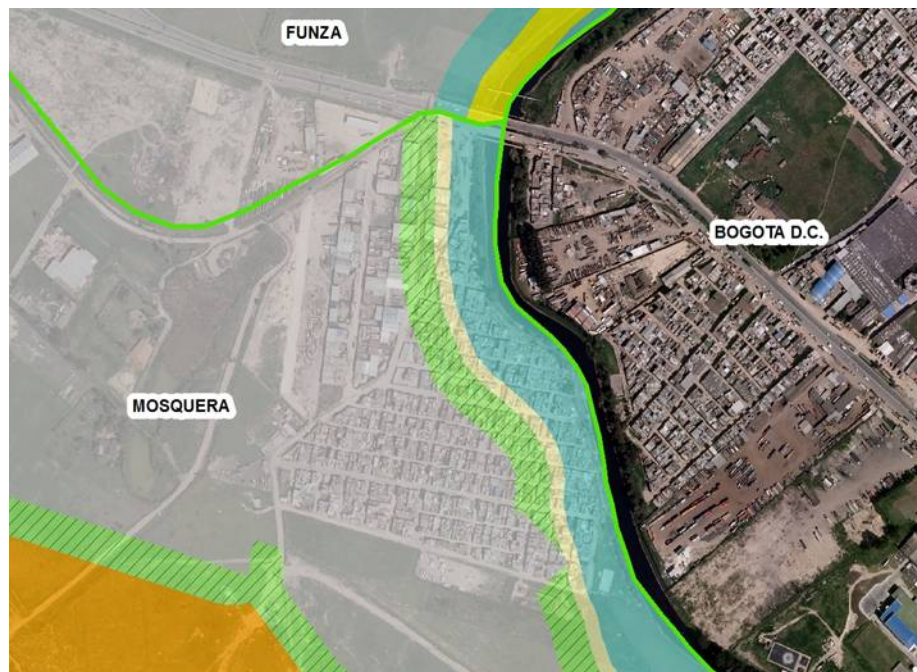
1. Role of the City of Bogota within the regional and the national context

1.1. Social, economic and environmental context

Urban occupation over water bodies



Occupation of environmental protected areas – Bogota river basin



Source: Government of Cundinamarca, Planning Secretariat of the City of Bogota and UNCRD (Map 2007)



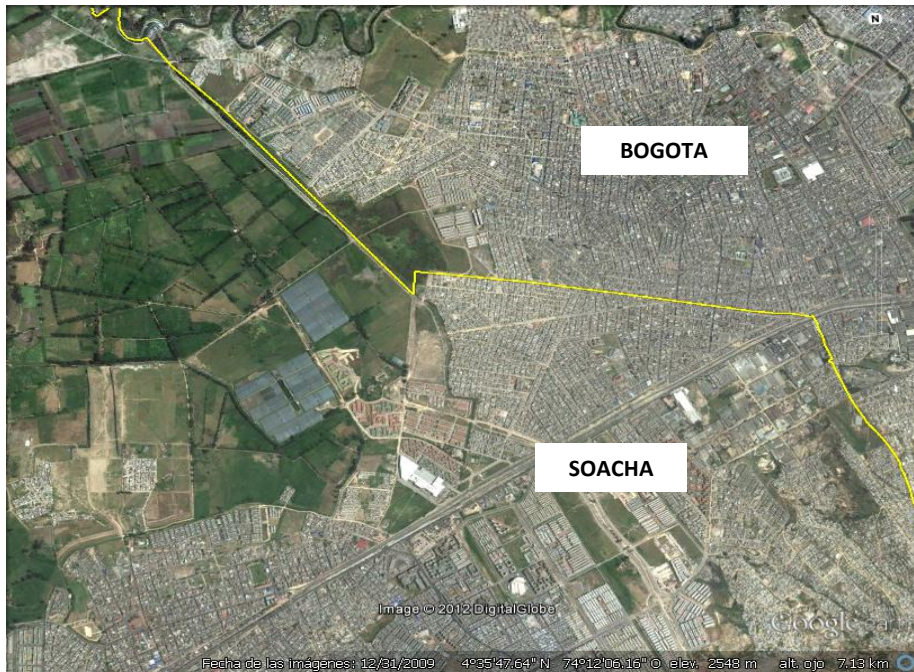
SECRETARÍA DE PLANEACIÓN



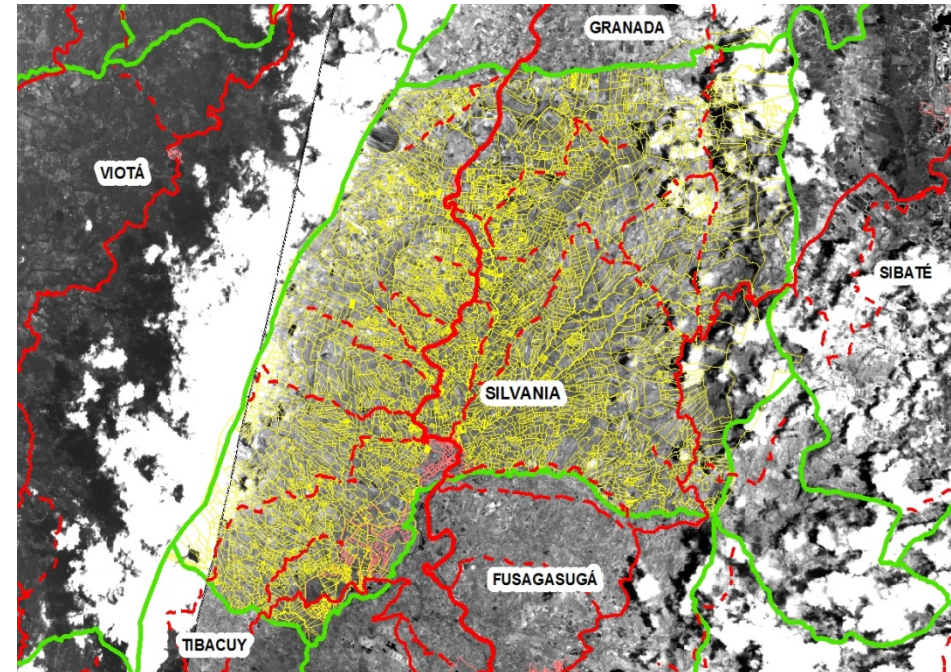
1. Role of the City of Bogota within the regional and the national context

1.1. Social, economic and environmental context

Conurbation



Fragmentation of agricultural land



Source: Government of Cundinamarca, Planning Secretariat of the City of Bogota and UNCRD (Map 2007)



ALCALDÍA MAYOR
DE BOGOTÁ D.C.

SECRETARÍA DE PLANEACIÓN

BOGOTÁ
HUMANA

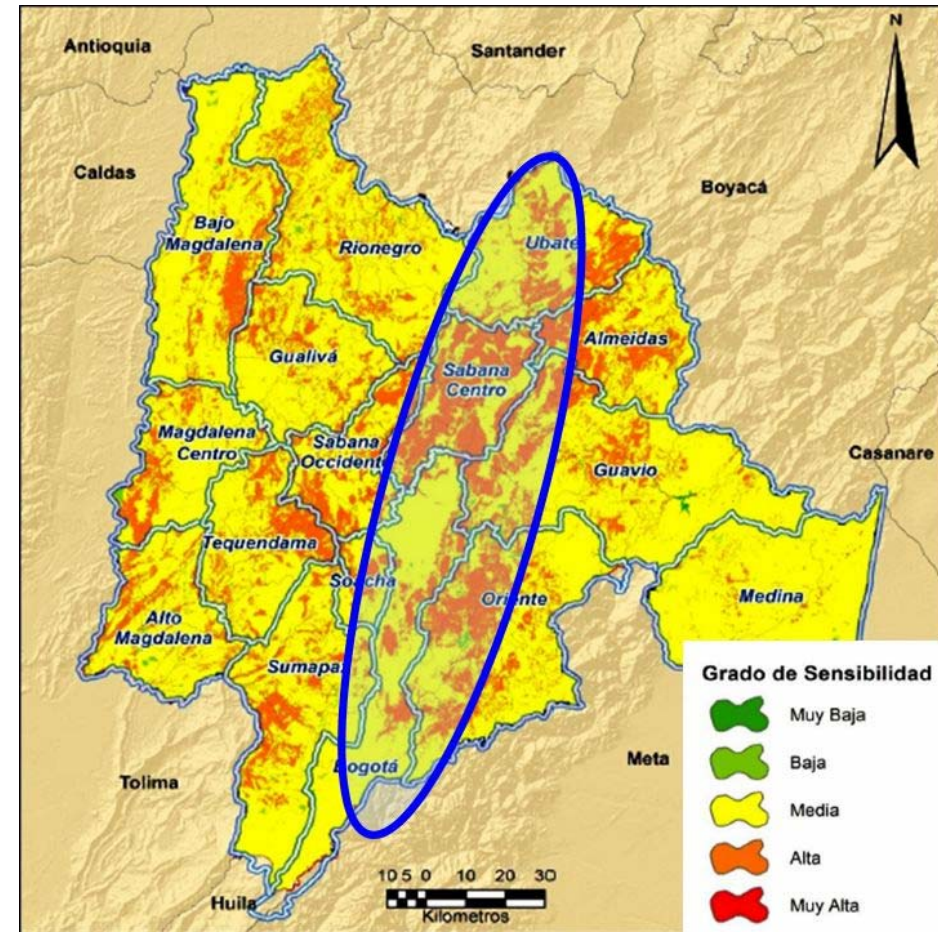
1. Role of the City of Bogota within the regional and the national context

1.2. Social, economic and environmental context

Water supply vulnerability and high ecosystem sensitivity to climate change



75% of drinkable water comes from Chingaza Moor



Fuente: Plan Regional Integral de Cambio Climático - 2012

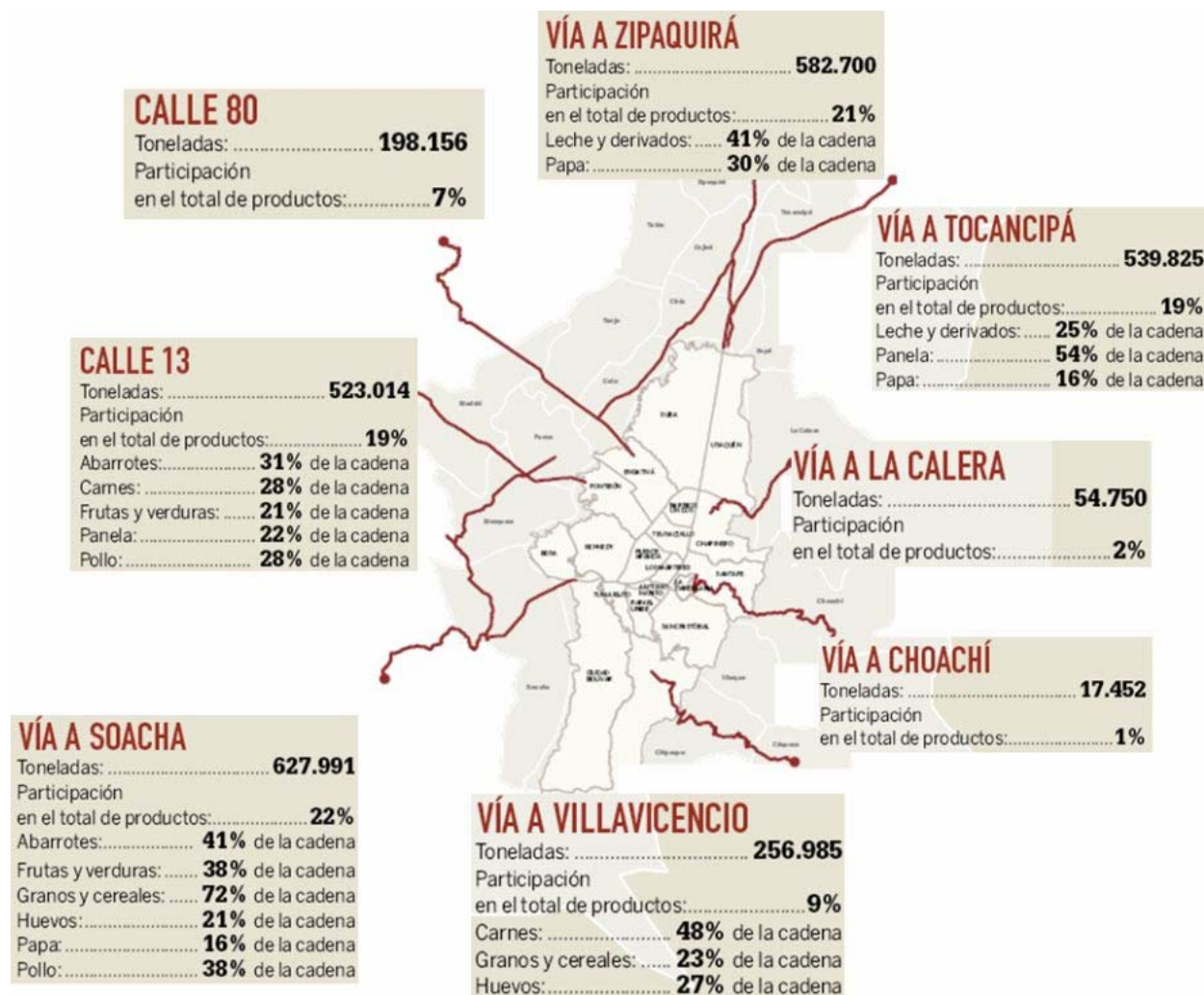
1. Role of the City of Bogota within the regional and the national context

1.2. Social, economic and environmental context

Food supply

Bogotá consumes 7.600 tons of food per day amongst fruits, vegetables, cereals and meat

77% of food is produced in a radio of 300 kilometers from Bogotá



Source: Diagnostic Report: Food Supply Master' Plan - Consortium CPT-CIPEC (2007)

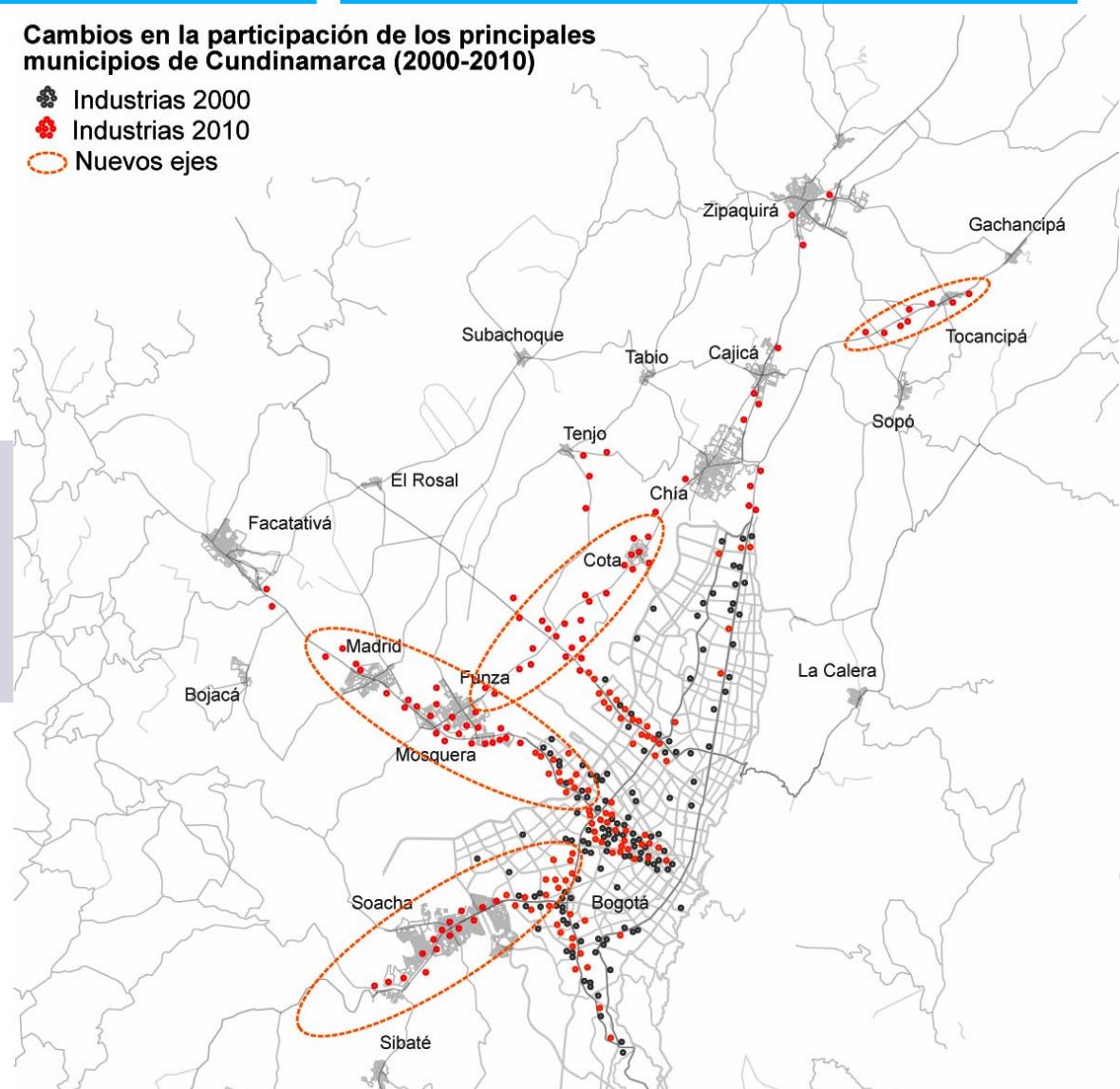


1. Role of the City of Bogota within the regional and the national context

1.2. Social, economic and environmental context

Cambios en la participación de los principales municipios de Cundinamarca (2000-2010)

- Industrias 2000
- Industrias 2010
- Nuevos ejes



Recent industry placements are located over the main transportation corridors that have access to the City

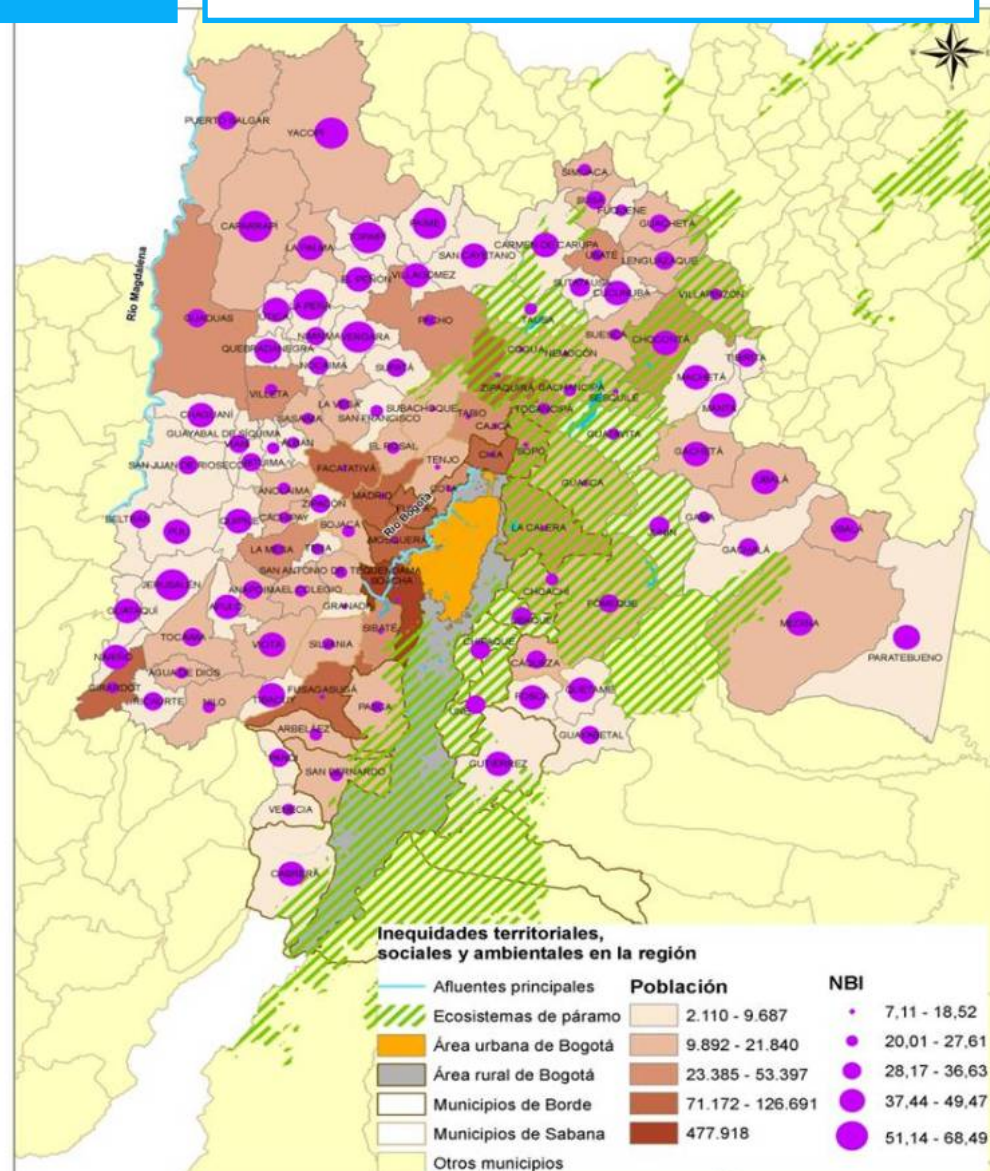


ALCALDÍA MAYOR DE BOGOTÁ D.C.

1. Role of the City of Bogota within the regional and the national context

1.2. Social, economic and environmental context

Poverty indicators are gradually higher in those territories located at longer distances from the Capital District



2. The regional integration strategy of the City of Bogota



ALCALDÍA MAYOR
DE BOGOTÁ D.C.

SECRETARÍA DE PLANEACIÓN

The Bogotá Humana logo, featuring the word "BOGOTÁ" in multi-colored letters (blue, green, red, yellow) above the word "HUMANA" in black, with a heart symbol replacing the letter 'A'. The logo is partially obscured by a white, curled-up corner effect.

BOGOTÁ
HUMANA

2. The regional integration strategy of the City of Bogota

2.1. Policy framework of the City of Bogota

Long term planning instrument: LAND USE PLAN



Mid term planning instrument: LOCAL DEVELOPMENT PLAN



The bound between them:

Local Development Plans must contain investment plans for the implementation of land use plans structural components



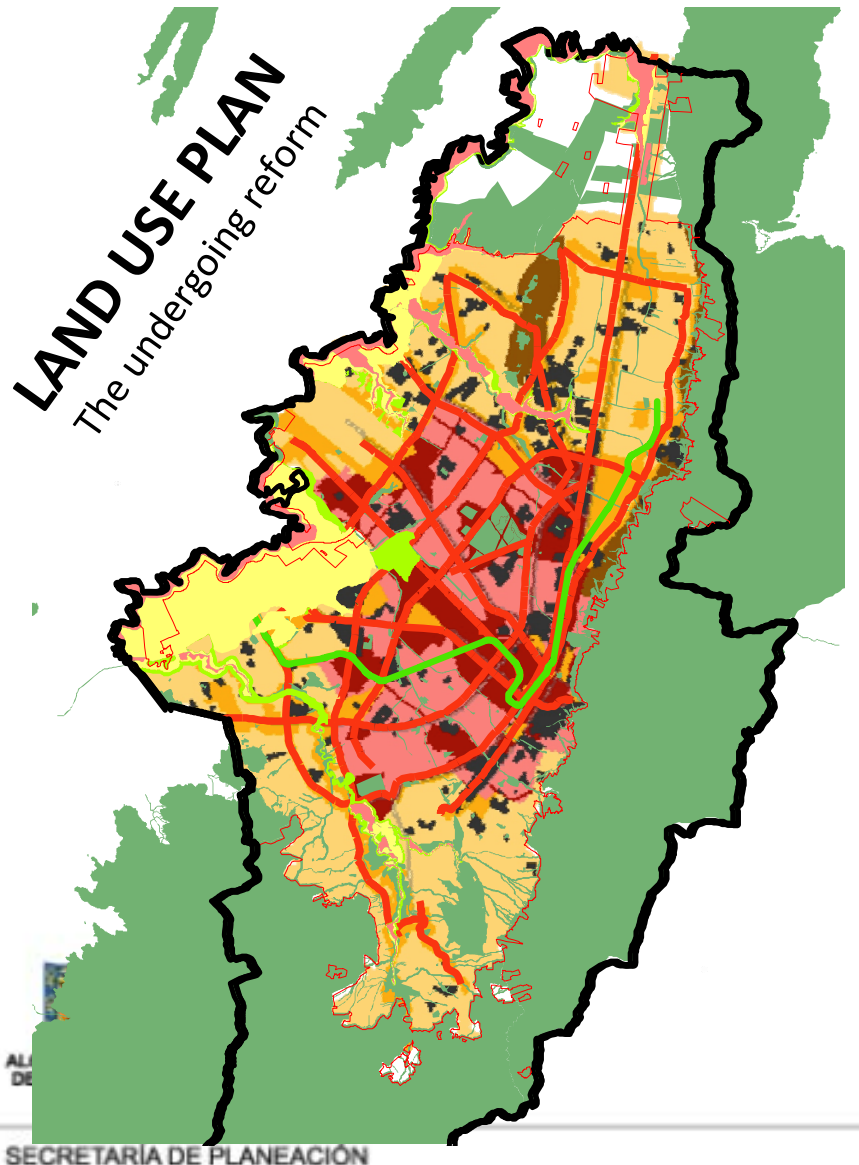
ALCALDÍA MAYOR
DE BOGOTÁ D.C.

SECRETARÍA DE PLANEACIÓN

BOGOTÁ
HUMANANA

2. The regional integration strategy of the City of Bogota

2.1. Policy framework of the City of Bogota



Main Ecology Structure

- Increase the number of protected areas
- Make visible environmental and landscape values of the ecology structure
- Restrict housing projects on high risk areas

Functional and Services Structure

- Consolidate a “net system” of public transportation
- Development of urban transformation potentials generated by massive transportation corridors

Socio-economic and spatial Structure

- Mixing policies
- Densification and location of low income housing projects in areas with a better accessibility and proximity to work and urban services

2. The regional integration strategy of the City of Bogota

2.1. Policy framework of the City of Bogota

Local Development Plan: Humane Bogota 2012-2016

A City that overcomes segregation and discrimination (in social and spatial terms)

A City planned according the “water structure” of its territory

A City that defends and strengthen the public value



Regional integration as a cross-sectoral and multi-dimensional issue

9 of 33 Development Plan Programs' involve regional integration goals related to: environmental sustainability, food security, infrastructure, economic development and technical cooperation



2. The regional integration strategy of the City of Bogota

2.2. Regional integration approach

Multiple-scope regional approach

i. Border scope (local issues)

- Urban and metropolitan border
- Rural border

ii. Sub regional scope:

Bogota and Cundinamarca

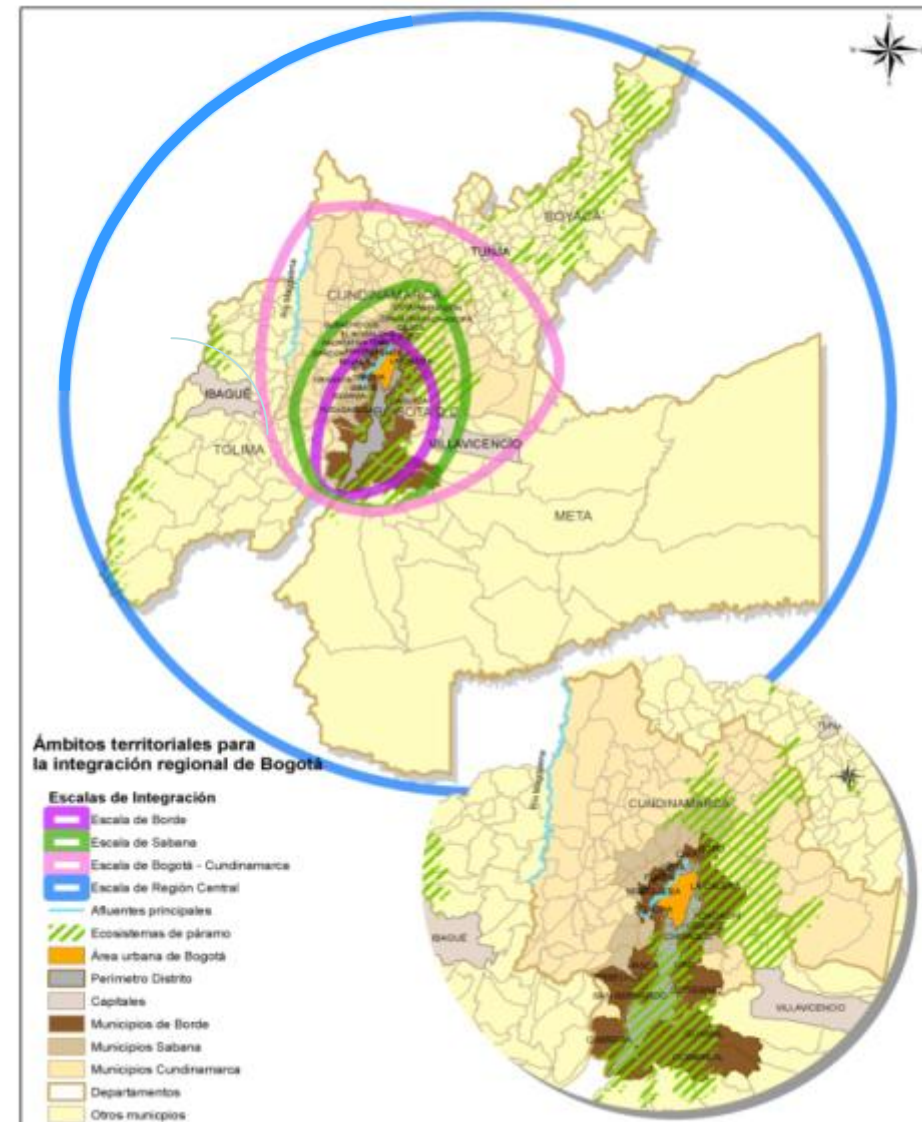
iii. Central Region scope

Bogota, Cundinamarca, Meta, Boyacá, and Tolima



ALCALDÍA MAYOR
DE BOGOTÁ D.C.

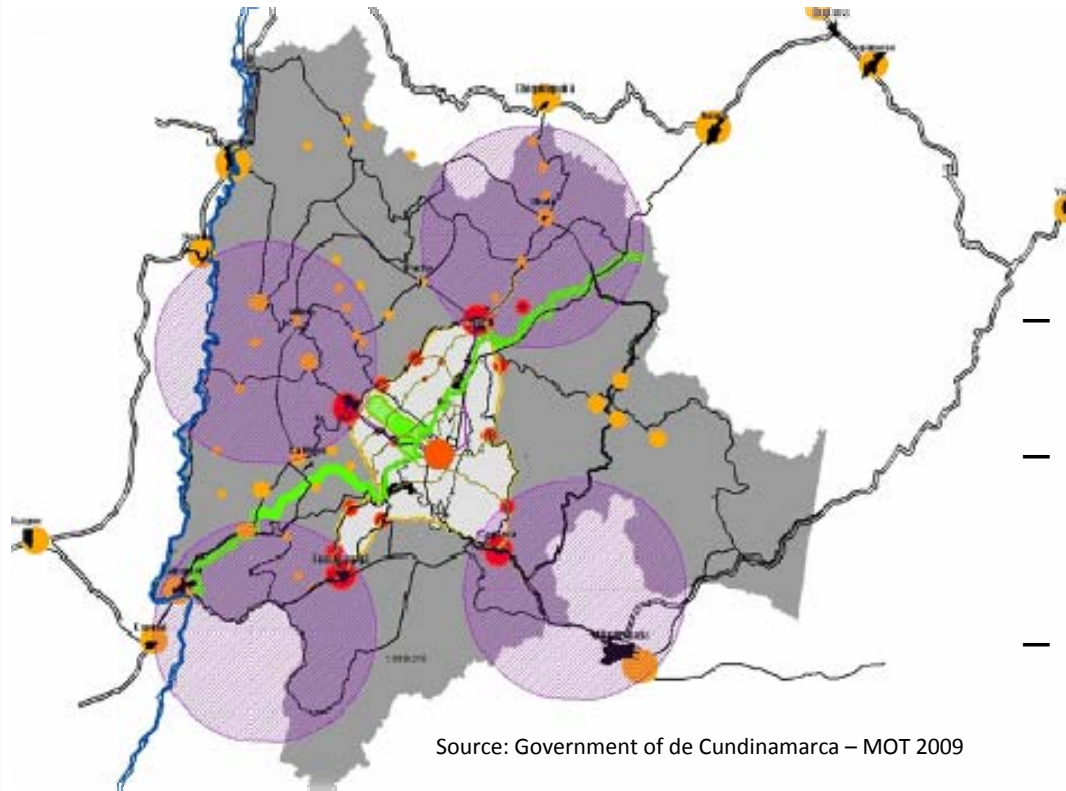
SECRETARÍA DE PLANEACIÓN



Source: Planning Secretariat of the City of Bogota (2012)

2. The regional integration strategy of the City of Bogota

2.2. Regional integration approach



Source: Government of de Cundinamarca – MOT 2009

Regional occupation model

- **Regional deconcentration** in terms of population and economic activities
- Consolidation of a subregional **net of centralities** (characterized compact cities)
- Balanced distribution of infrastructures related to strategic urban projects



ALCALDÍA MAYOR
DE BOGOTÁ D.C.

SECRETARÍA DE PLANEACIÓN

BOGOTÁ
HUMANA

2. The regional integration strategy of the City of Bogota

2.2. Regional integration approach

Our strategy: Building from what is basic and possible

Building regional governance conditions

At our own institutional framework

- Institutional strengthening (cooperation agreement with UNCRD)
- Revitalization of the Cross-Sectoral Coordination Committee for regional integration and competitiveness



Undertaking regional interventions

Implementation of regional projects

- Regional corridor for Moors' protection and conservation
- Regional Information System
- Regional Agricultural Corridor
- Rail ways and transportation corridors

Regional coordination activities

- Bilateral integration agreements
- Multilateral debate scenarios

Negotiation of regional integration figures

- Metropolitan Area Bogotá - Soacha
- Administrative and Planning Region (with Central Region Departments)

2. The regional integration strategy of the City of Bogota

2.2. Regional integration approach

The focus: basic regional integration systems
(those in which a minimum scale is required)

- ➔ Environment
- ➔ Food supply
- ➔ Economic platforms

Prioritized regional systems that allow integrated actions

- ➔ Infrastructures (may be regional or not according to the scale)

Meanwhile regional consensus come true, we have focus our efforts on few but comprehensive projects



ALCALDÍA MAYOR
DE BOGOTÁ D.C.

3. Final Remarks



ALCALDÍA MAYOR
DE BOGOTÁ D.C.

SECRETARÍA DE PLANEACIÓN



BOGOTÁ
HUMANANA

The Bogotá Humana logo is located in the bottom right corner, partially overlapping a white, curled-up corner graphic. It consists of the word "BOGOTÁ" in a multi-colored font (blue, green, red, yellow) above the word "HUMANANA" in a black font with a heart symbol replacing the letter 'A'.

3. Final Remarks

Regional governance conditions

- Excessive local autonomy and weak regional governments.
- Territorial planning and financing instruments that favor interest conflicts.
- Asymmetry between Bogota and their counterparts.



ALCALDÍA MAYOR
DE BOGOTÁ D.C.

The current assets

- Regional integration process in construction since 2001 (regional vision)
- Valuable information captured and analysis done to understand the regional context and issues.

New favorable conditions

- Urban pressures over natural systems lead to regional coordination.
- Legal transformation to induce regional coordination practices.
- Planning culture transformation: cross-sectoral and multi-dimensional policies.

3. Final Remarks

We believe being in the path for achieve regional governance conditions, however:

Real challenge

- Development of capacities to lead cross-sectoral policies.
- To overcome the complexities of an integrated development approach.



ALCALDÍA MAYOR
DE BOGOTÁ D.C.

SECRETARÍA DE PLANEACIÓN



BOGOTÁ
HUMANANA

The Bogotá Humana logo is positioned in the bottom right corner, partially overlapping a white, curled-up paper effect. The word 'BOGOTÁ' is written in large, multi-colored letters (blue, orange, green, red), and 'HUMANANA' is written below it in black.

3. Final Remarks

3.1. Institutional conditions

What about regional governance conditions?

Crucial elements in regional coordination		Levels of government			Hints
		National	Regional	Local	
Long term planning instruments	Land use plan		X	X	<ul style="list-style-type: none"> a. National government can interfere (mining and large scale urban housing projects) b. Difficult coordination amongst local authorities
Mid-term planning instruments	Development plan	X	X	X	Difficult coordination amongst levels of government
	Sectoral policies	X	X	X	<ul style="list-style-type: none"> a. National government defines general guidelines b. Regional and local government defines implementation strategies
Financing	Own income resources (taxes)	X	X	X	<ul style="list-style-type: none"> a. National government defines tax structure. b. Regional and local government defines tariffs. c. Large scale transfers system from the national government to regional and local levels
	Royalties	X	X	X	<ul style="list-style-type: none"> a. National government has veto power b. Low scale of regional projects



ALCALDÍA MAYOR DE BOGOTÁ D.C.

SECRETARÍA DE PLANEACIÓN



Bogotá's regime although it also holds certain attributions of a regional level of government



3. Final Remarks

3.1. Institutional conditions

What about regional governance conditions?

