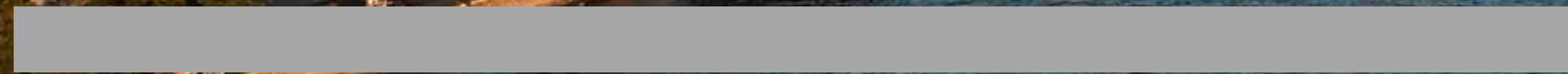




**CITY OF  
MAKASSAR**



**ISMAWATY NUR**



**SOMBERE & SMART**

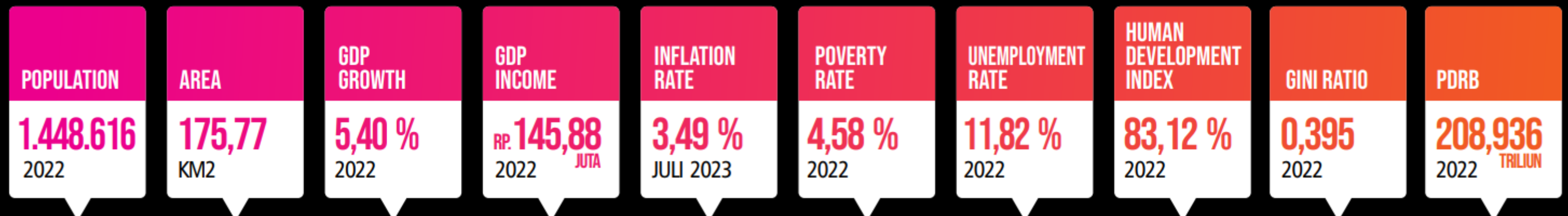
**CITY**

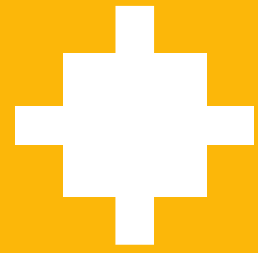
**August 2023**

# ABOUT MAKASSAR

With a population of close to 1.5 million, Makassar is one of Indonesia's largest cities. Makassar combines smart solutions with local wisdom to overcome the increasing population and rapid urbanization challenges. A critical economic hub in Indonesia, the city is the largest in South Sulawesi, where it accounts for 20% of the population and more than 50% of the gross domestic product. The economy, built on trade, construction, and manufacturing, is growing rapidly.

Under its vision of a Sombera ("kindhearted") and Smart City, Makassar has embarked on an ambitious, smart city program guided by cultural values. It is part of a network of 26 smart cities under an initiative started by the Association of Southeast Asian Nations (ASEAN) in 2018. The initiative's primary goal is to improve the lives of citizens by using technology to enhance the delivery of services, make cities more livable and inclusive, and ensure that no one is left behind.





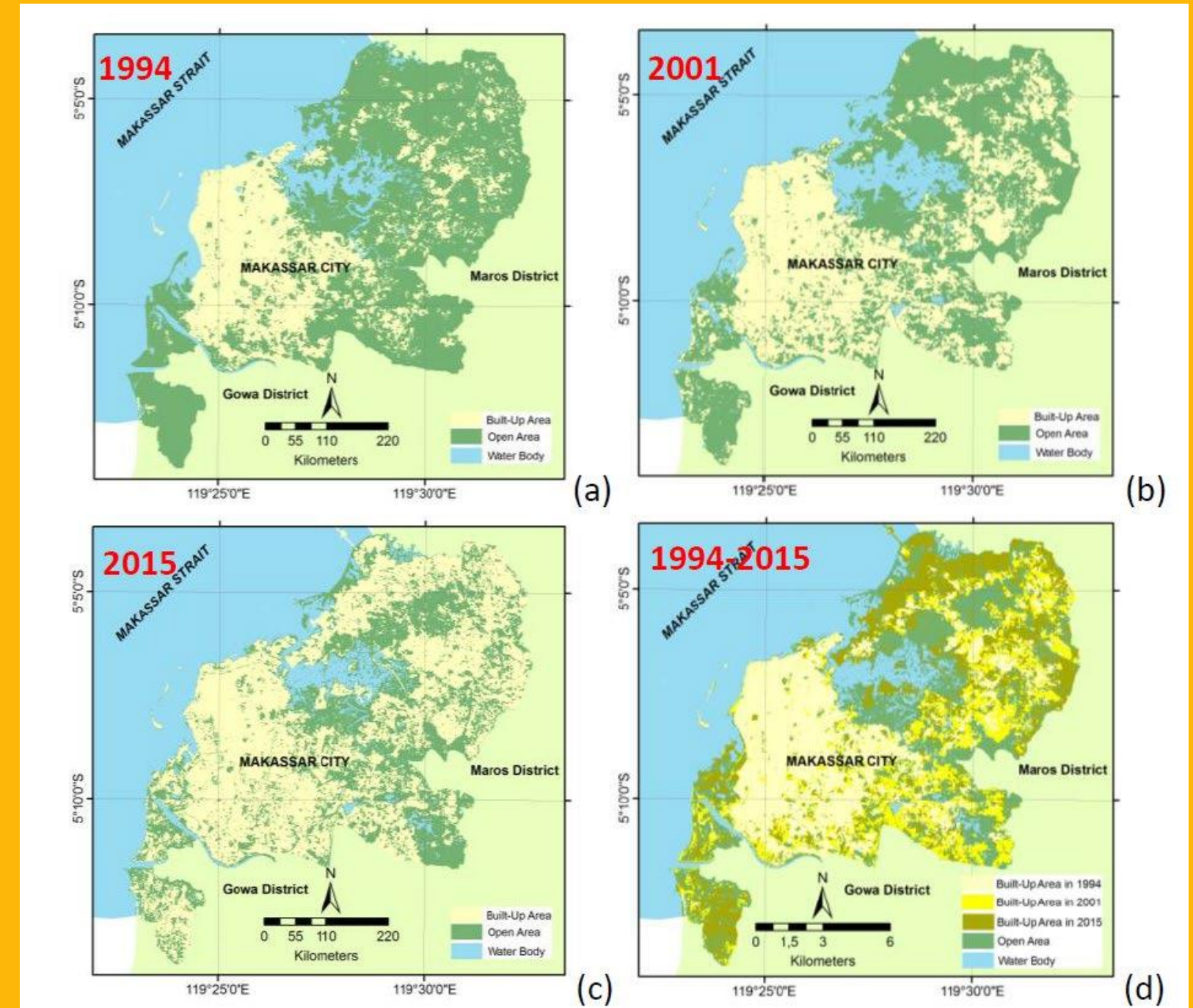
## City Policy, Planning, and Development Issues

Lacks a long-term blueprint for urban growth

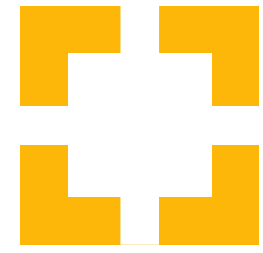
The city's current spatial design is inadequate since it does not account for either its present or future demands

Lack of coordination and collaboration

The implementation of urban plans and projects is hampered by a lack of coordination and collaboration among various government departments and stakeholders



The land use of Makassar City in 1994, 2001, and 2015, and the trend of the land use from 1994 to 2015



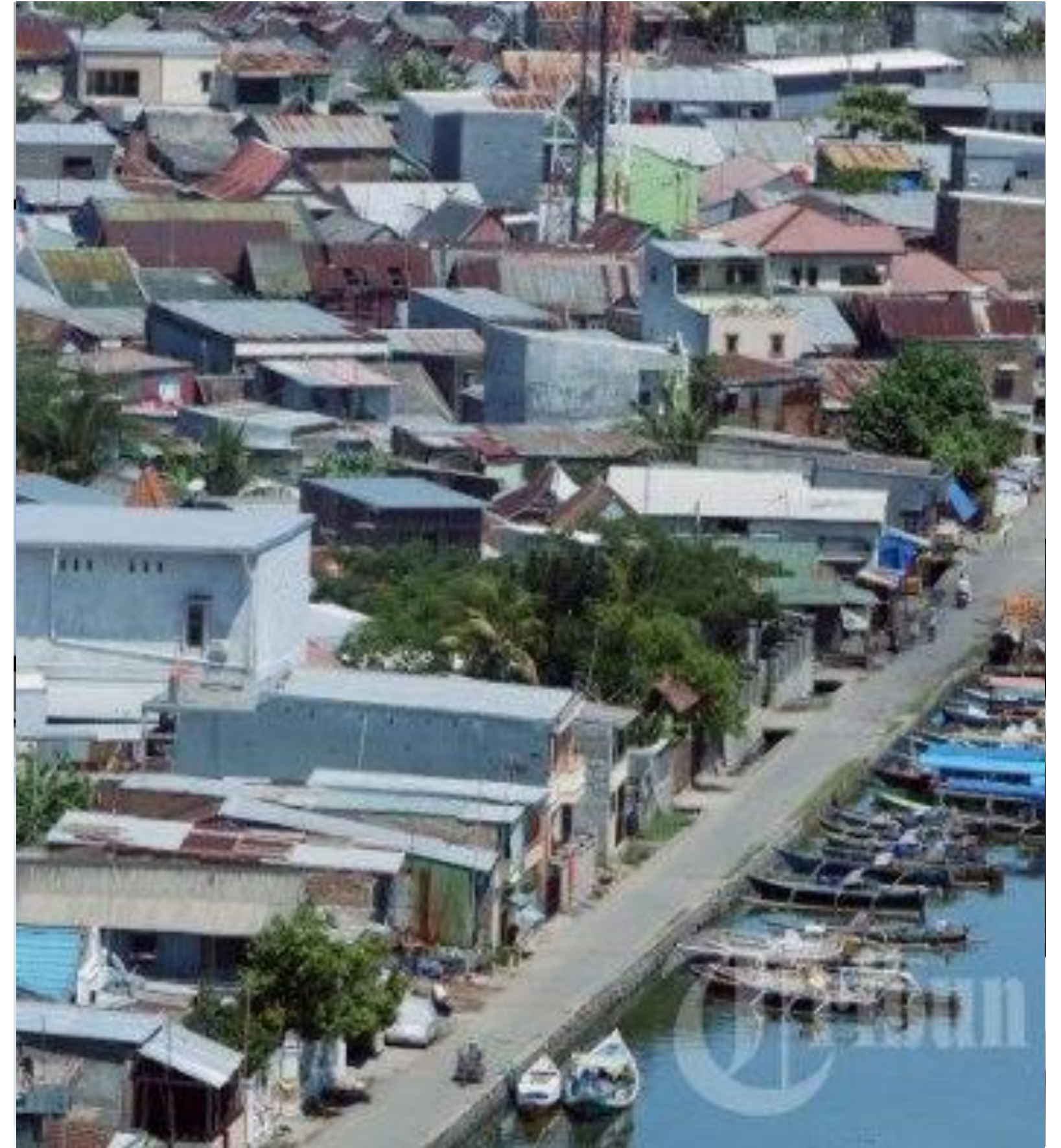
## Urban Design and Development Issues

Rapid urbanization and population increase

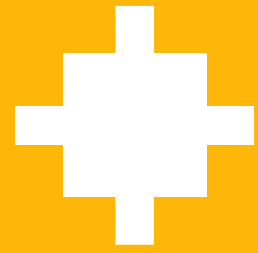
have resulted in urban sprawl, congestion, pollution, slums, and social inequality

The urban planning and infrastructure need to be upgraded

make the city more hospitable, sustainable, resilient, and welcoming. Land use, density, public space, green space, heritage conservation, and urban revitalization are all essential components of urban planning and development



# MAJOR ISSUES & CHALLENGES



## Transport and Mobility Issues

Makassar's inefficient and outdated infrastructure

Which cannot keep up with the city's rapidly expanding population and economy.

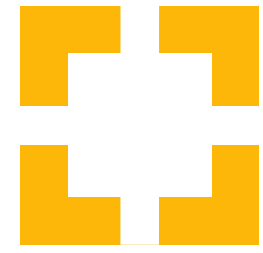
City's reliance on private vehicles

Traffic jams, accidents, noise, and pollution stem from the city's reliance on private vehicles

Poor coverage, accessibility, price, and quality characterize the public transportation system

Safe, dependable, convenient, and inexpensive mobility and a more integrated and multimodal transport system are needed





## Water-induced Disaster Risk and Hazard

Makassar is subject to water-related calamities such as floods, storm surges, and sea level rise. These calamities can cause considerable harm to people, property, infrastructure, and the environment

Strengthen disaster risk management and adaptation measures

To reduce its exposure and vulnerability to water-related risks.



# New Initiatives- New City Plans & Projects

**SOMBERE' &  
SMART CITY  
IS  
WHEN  
HIGH TOUCH  
MEETS  
HIGH TECH**

STRATEGY



TARGETS

- 01 INFORMATION  
**TRANSPARENT**
- 02 DATA  
**REAL TIME**
- 03 RESOURCES  
**CONNECTIVITY**
- 04 RESULT  
**EASY TO ACCESS**
- 05 TECHNOLOGY  
**COST REDUCTION**
- 06 TO DRIVE  
**QUICK RESPONSE**
- 07 DATA  
**ACCURACY**
- 08 TREND  
**ADAPTIVE**
- 09 LOCAL CHARACTER  
**CUSTOMIZED**
- 10 OUTCOME  
**ACCUMULATED**
- 11 SYSTEM  
**SECURED**

# **New Initiatives-New City Plans & Projects**

**GARDEN ALLEYS**

**CALL CENTER 112**

**GOVERNMENT CENTER**

**TOURISM ALLEYS**

**DRONE MEDIC**

**INTEGRATED CONTAINER PUBLIC SERVICES**

**HEALTHY ALLEYS**

**MAKASSAR METAVERSE**

**INTELLIGENT TRANSPORT SYSTEM**

**ALLEY APARTMENT**

**MAKASSAR RECOVER**

**COMMUTER METROMODA**

**HEMOCARE WITH  
TELEMEDICINE**

**INCUBATOR CENTER**

**MART ELECTRIC SMART  
ENTERPRISES**

**KEEP OUR CHILDREN SAFE**

**MAKASSAR CORE CITY ARENA**

**INTEGRATED & DIGITALIZED TAX**





# Case Studies

# RESULT & PROGRESS

## LOCAL OWN SOURCE REVENUE MAKASSAR YEARS 2014 - 2022



TAX INTEGRATED  
AND DIGITALIZED

**PAKINTA**  
PAKINTA

PAJAK TERINTEGRASI & TERDIGITALISASI

DOWNLOAD NOW

GET IT ON  
Google Play

Download on the  
App Store

LG



# HOMECARE WITH TELEMEDICINE



Advanced Traffic Signal Control Systems (ATSCS), Bus Rapid Transit (BRT), Bus Information Management System (BIMS), CCTV Traffic Analytics

# INTELLIGENT TRANSPORTATION SYSTEM

# Expectations

## From the smart city workshop

**We can learn about the latest technologies and innovations that can be used to improve urban life.**

We can also learn about the different aspects of smart cities, such as transportation, energy, water management, waste management, public safety, and more.

Along with this workshop, we can catch an opportunity to network with other professionals in their field and share their experiences and knowledge.





PEMERINTAH  
KOTA MAKASSAR

**Thank you**

*Terima kasih*