

COUNTRY PRESENTATION

A. S. M. Elias Shah

Roads and Highways Department

Bangladesh



04 March 2025

Bangladesh



• Land Area: 147,570 Sq. Km.

Population: 171 Million



National, Regional and Zilla Road

Road Network under RHD = 22,418 km

Road

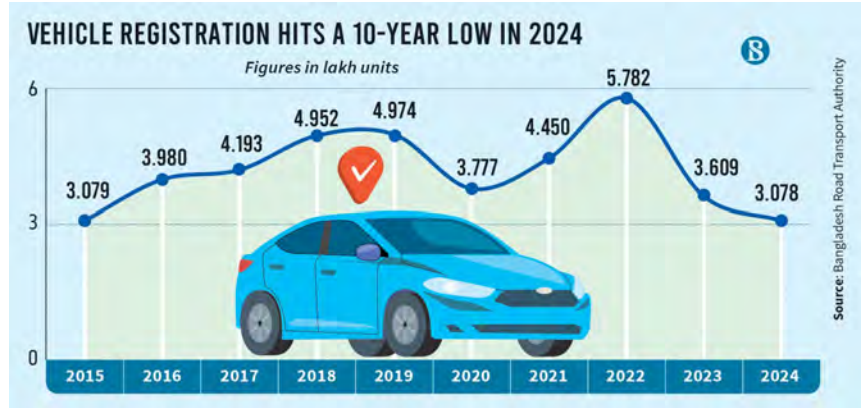


Vehicles





Mostly used cars



Growth of vehicles

Traffic Congestion



Emission Production



Environmental Intensity

×

Travel distance

×

Travel Speed



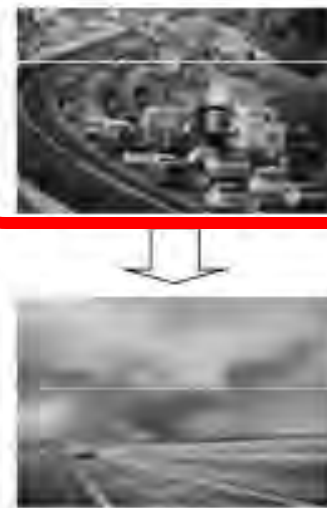
Promote the ownership of Low Emission Vehicles



Reduce car use frequency or trip distance



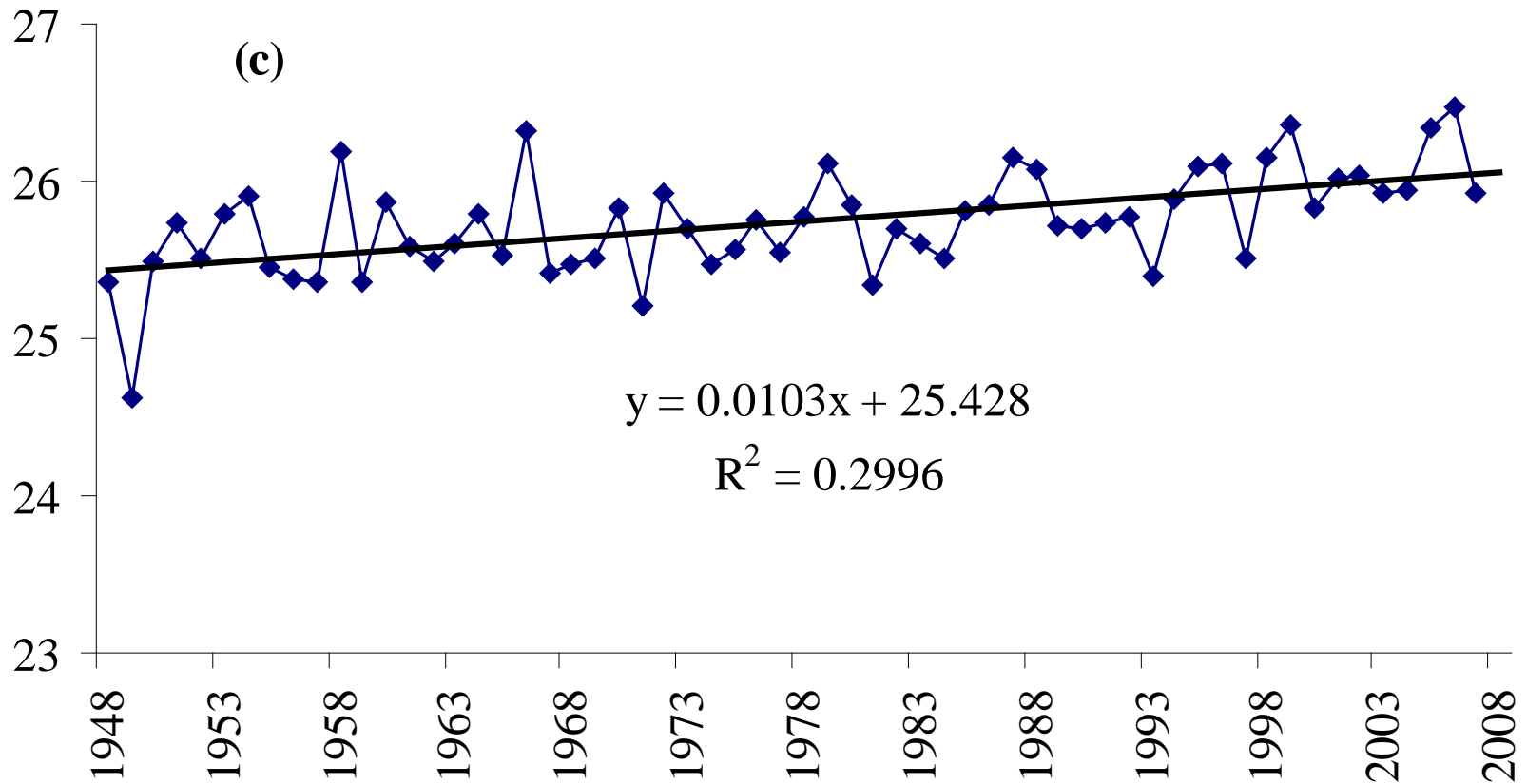
Make traffic flow smooth





Temperature Data Analysis (1947-2007)

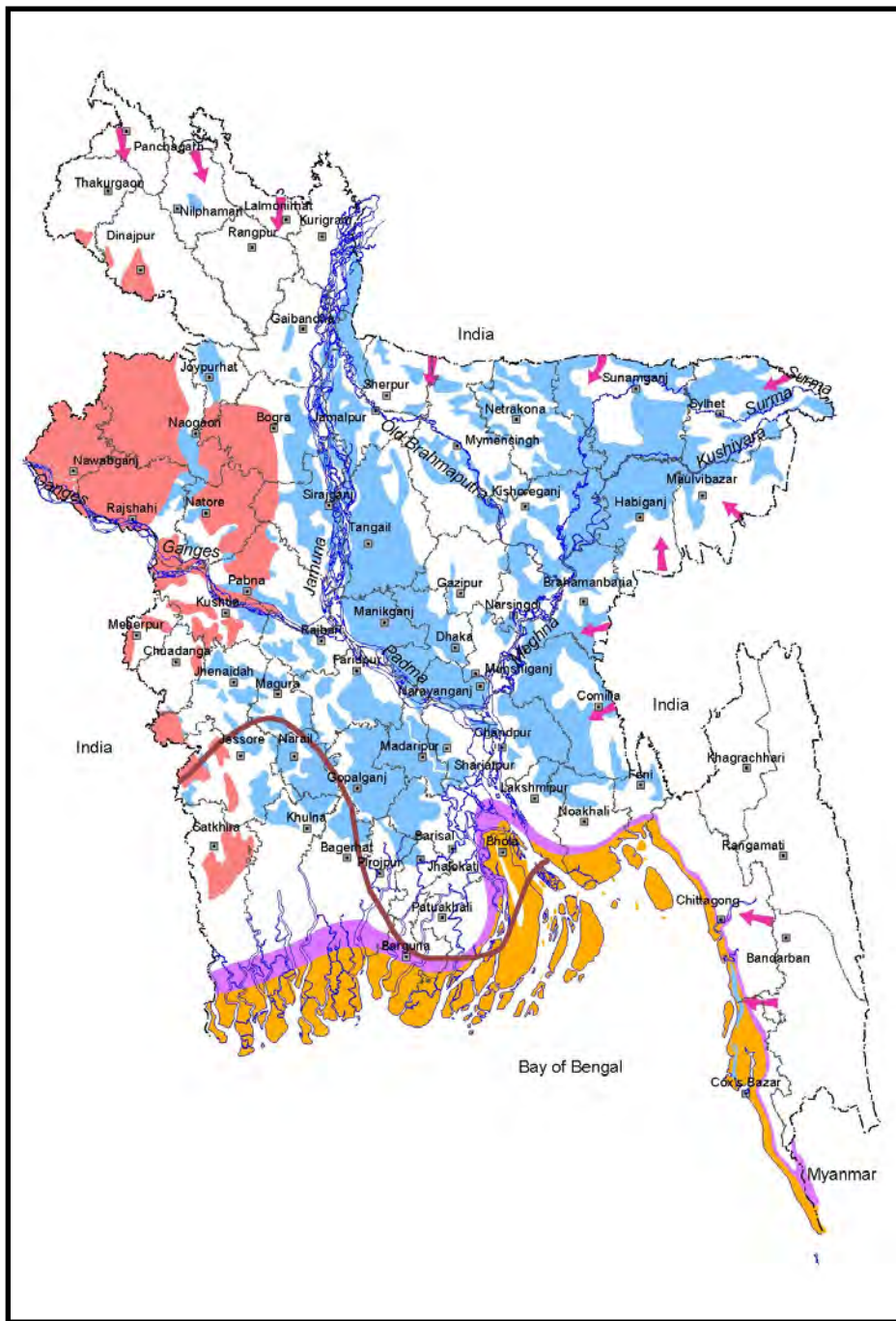
Mean daily temperature of Bangladesh has increased with a rate of 1.03 °C per 100 years



Source: CEGIS, Bangladesh

Vulnerability due to Natural Disasters

- Sedimentation/Water logging
- Tornadoes
- Earthquake
- Tsunami



Legend

- International boundary
- District boundary
- Rivers
- Normal Flood
- Flash Flood
- Severe drought prone area
- Surge Height above 1 meter
- Surge Height less than 1 meter
- 1 ppt salinity Isoline

Bangladesh The Most Vulnerable Country in the World

WHO SUFFERS MOST FROM **EXTREME WEATHER** EVENTS?

Six of Asia's countries are ranked among the world's top 10 countries most affected by climate risk based on frequency, death tolls and economic losses, according to the Global Climate Risk Index by think-tank Germanwatch.



Compiled by: ANN/DataLEADS

Cyclone SIDR in 2007

Wind speed of 250 km/hour
4234 Deaths and 8.9 million people
affected



Cyclone AILA in 2009

Wind speed of 120 km/hour
300 Deaths and 3.9 million people
affected

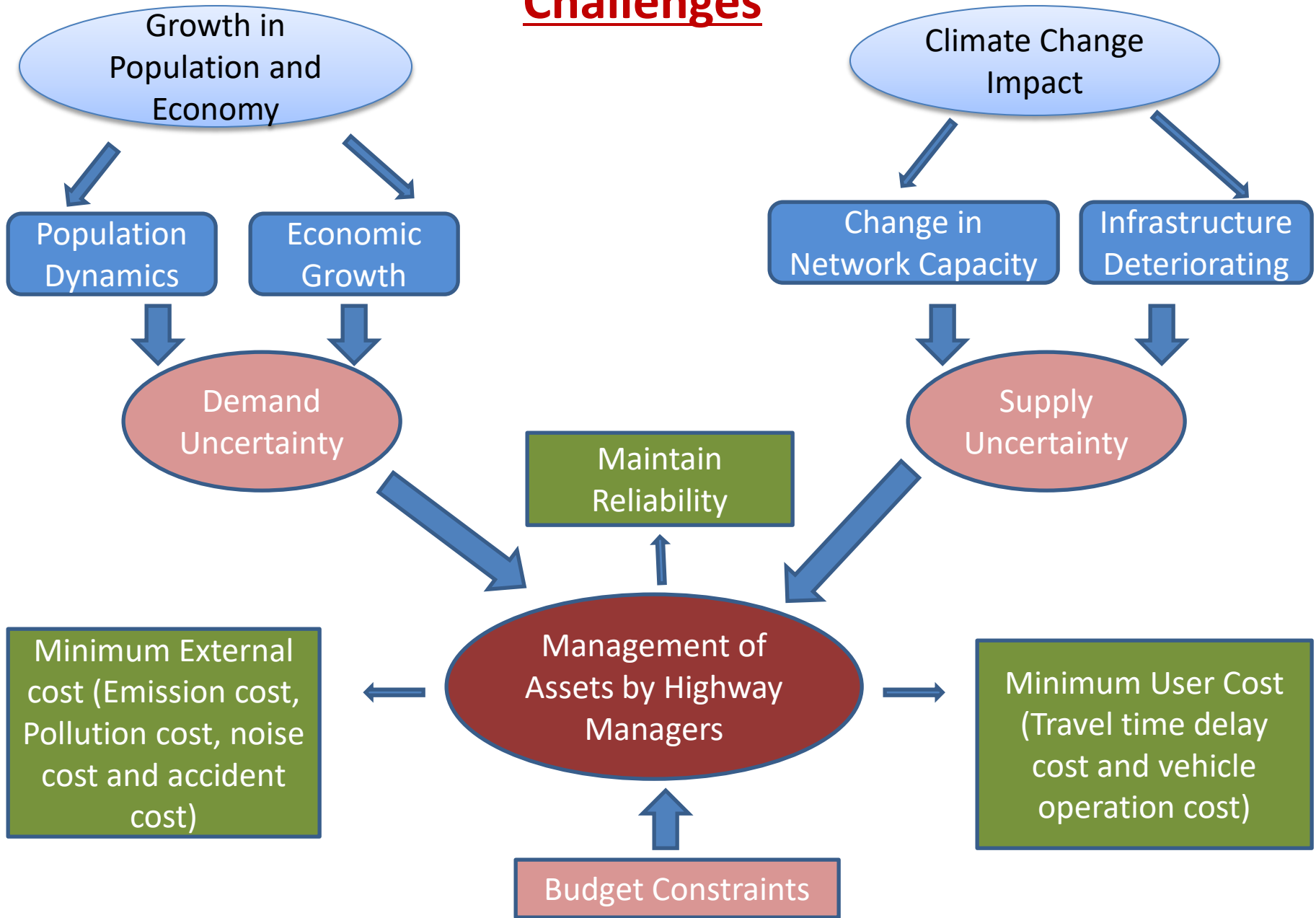


Flood on **N1** in 2024

Affected Road

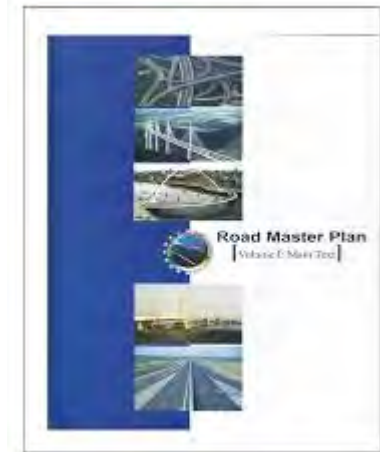


Challenges



Vision and New Initiatives

- ❑ Road Master Plan
- ❑ Changes in Technical Specifications
 - Emphasis on Rigid Pavement
 - Recycling of Bituminous Pavement
 - Use of Polymer-modified Bitumen (PMB)
- ❑ Projects under PPP financing



shutterstock.com - 2353536603



Successful Examples and Best Cases



Rigid Pavement



PMB Wearing Course



Plastic Road



EV

Expectations from the Workshop

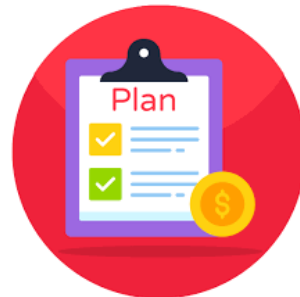
- New Technologies for Quality Road Infrastructure



- Active involvement in quality road infrastructure development



- Continuation of communication



- Appropriate financing to developing countries for quality structure

*“It is not the strongest of the species that survive ,
nor the most intelligent.*

But the one most responsive to change”

-----Charles Darwin

+
●
○

THANK YOU

