

Assam SASEC Corridor Connectivity Improvement Project (ASCCIP)

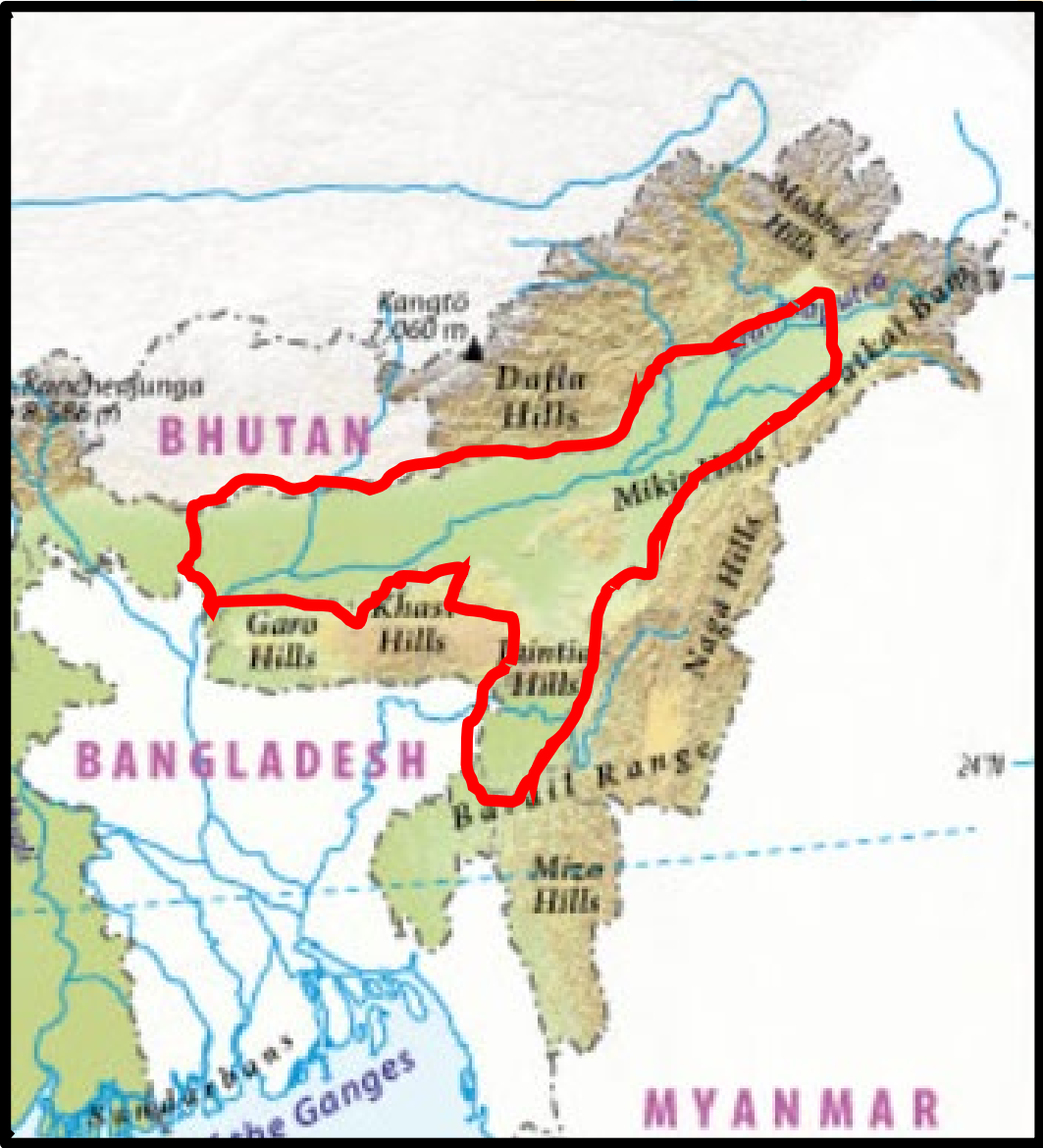
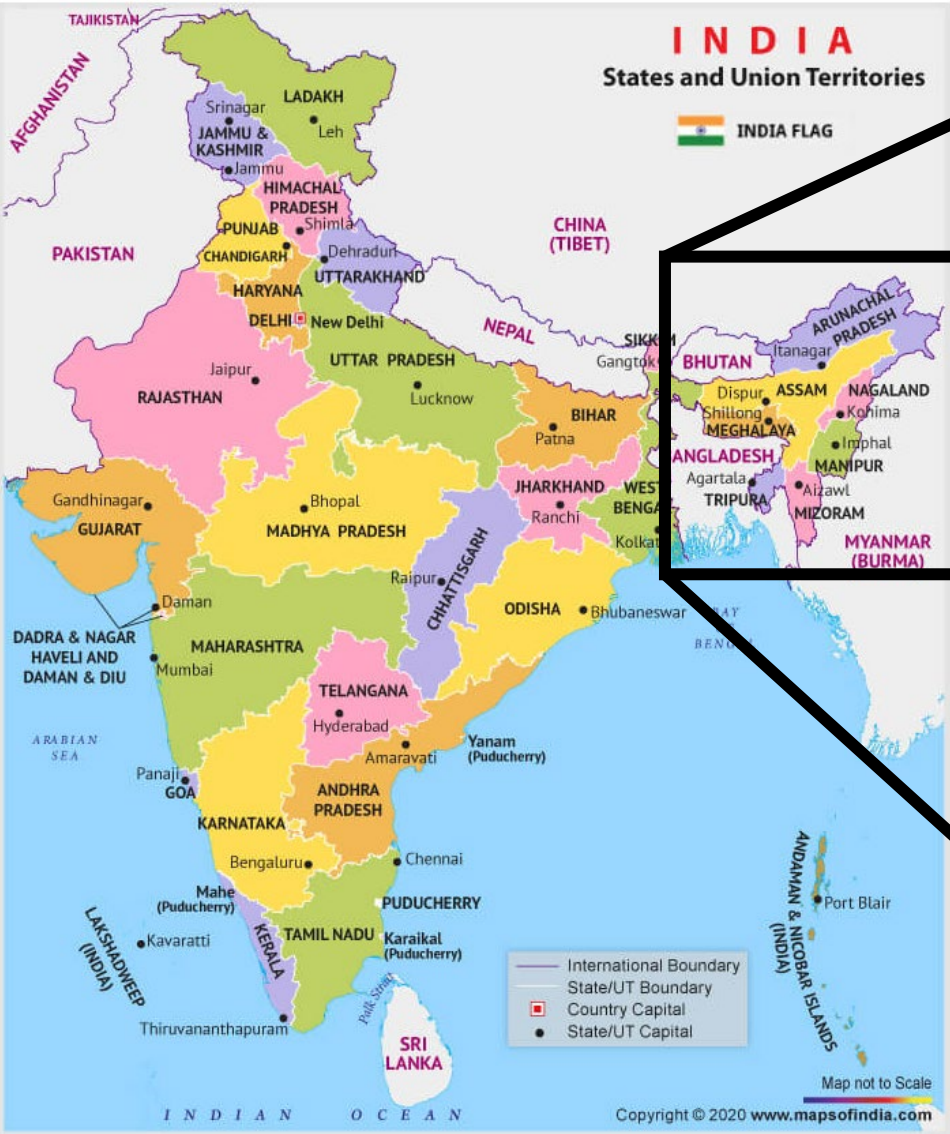
4 March 2025

Hiroshi Fukushima, Asian Development Bank

Introduction - Assam in India -

78,438km²

Population : 34 million

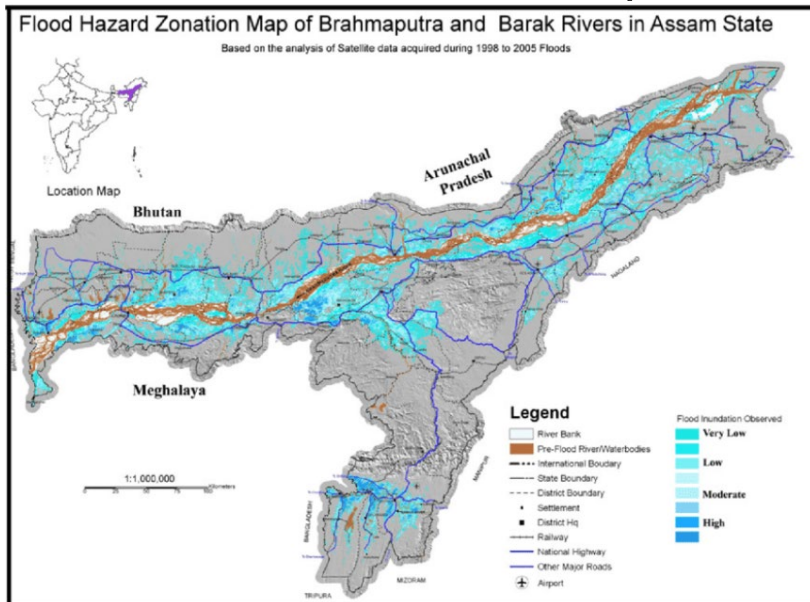


Hazard Profile of Assam

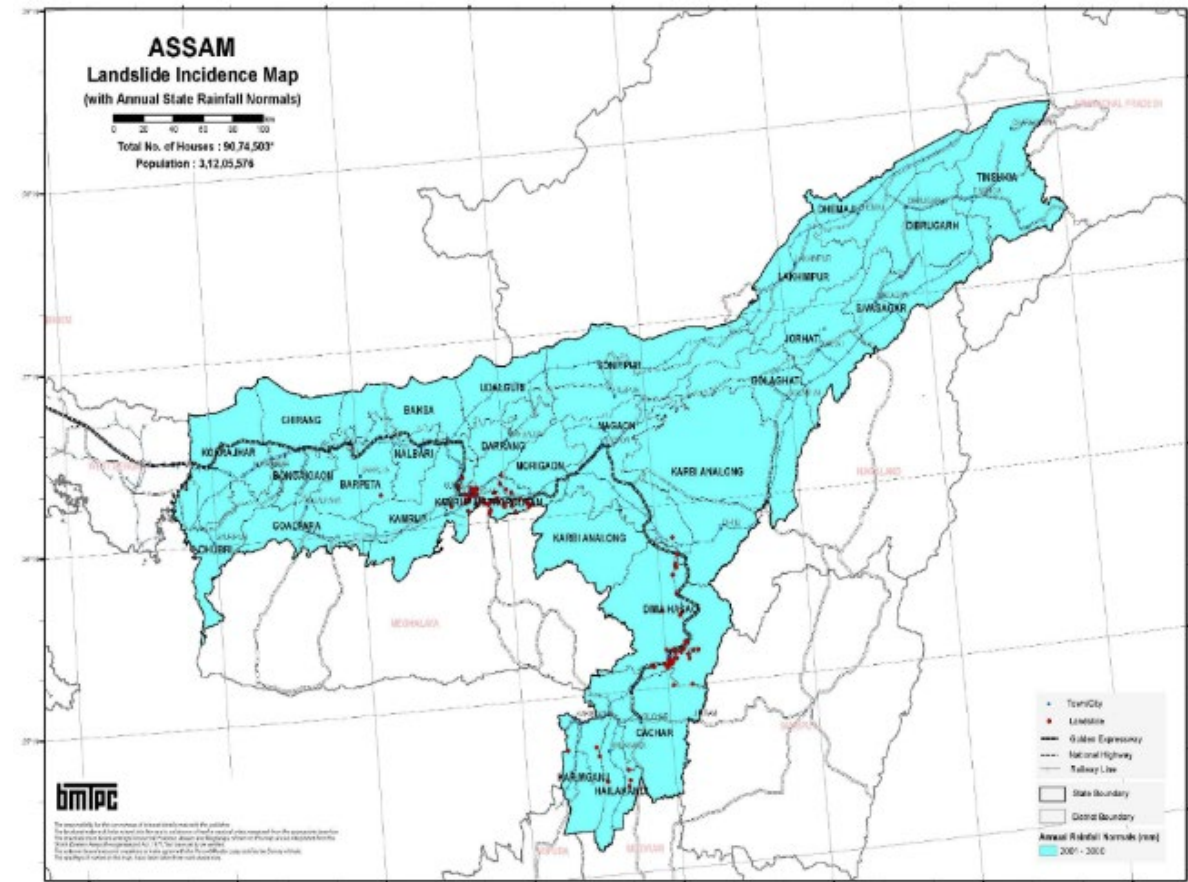
Assam consistently ranks among the top Indian states most vulnerable to climate and disaster risks

- 2,100 mm of rainfall each year, with 65% occurring during monsoon season.
- Highly vulnerable to floods, around 40% of the land area prone to flooding (Brahmaputra River).
- Landslides are severe in the southern region of the State.

Assam Flood Inundation Map



Location of Landslide Incidence



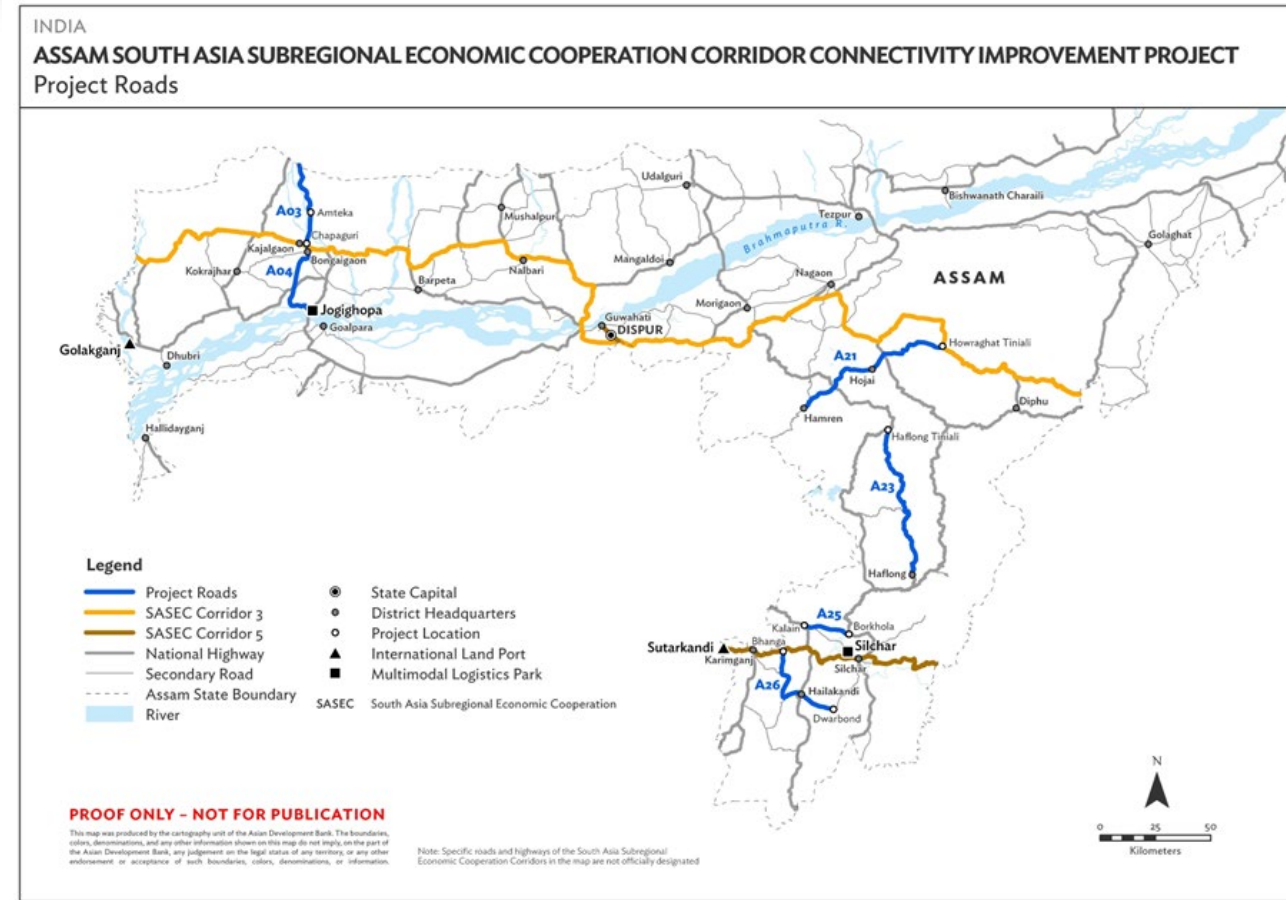
DMTPC, Vulnerability Atlas - 3rd Edition, Peer Group, MCHIA, ODI. Map is based on digital data of ODI. Landslide incidence data ODI. Annual Rainfall data IMD. Houses/Population as per Census 2011. *Houses including vacant & locked houses. Disclaimer: The maps are solely for thematic presentation.

Assam South Asia Subregional Economic Cooperation Corridor Connectivity Improvement Project

- ✓ \$300 million (March 2023 – June 2029)
- ✓ 312.5km, 6 State Highways and MDRs
- ✓ Quality Highway Design
 - Climate Change Resilience (CCR)
 - Disaster Risk Reduction (DRR)
 - Road safety
 - Wildlife habitat and biodiversity
- ✓ Climate adaptation : \$100.93mil
(ADB financing : \$ 75.4mil)

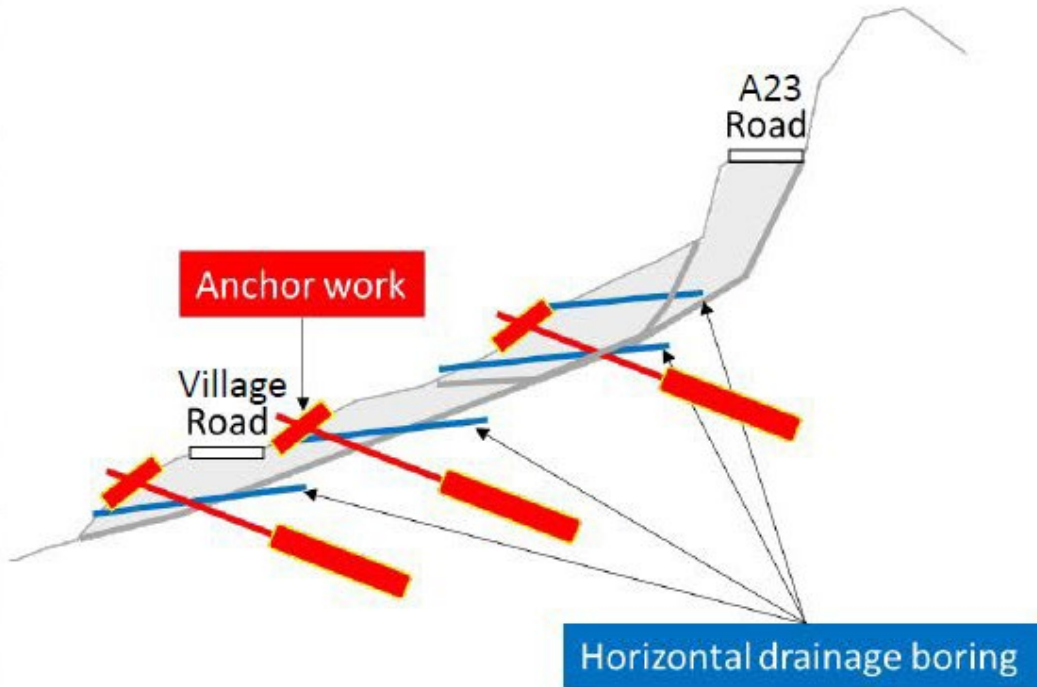
Output

1. State highways and MDRs improved
2. Institutional capacity of Assam PWRD in climate and disaster resilience, road asset management, and safeguards strengthened
3. Road safety measures on state highways and major district roads in the project districts enhanced.



Design for CCR/DRR and Road safety

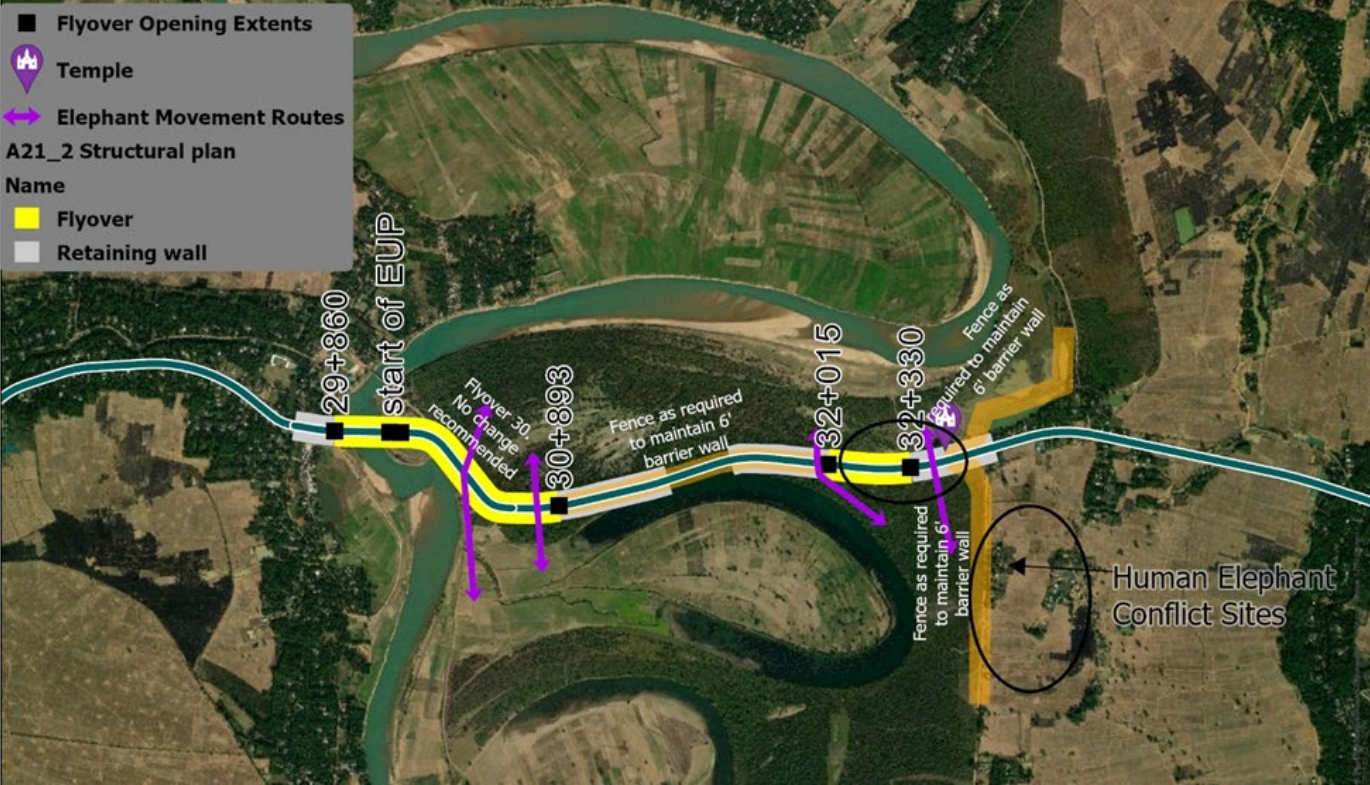
Slope protection guidelines developed under the Capacity Development Project on Highways in Mountainous Regions, funded by JICA, is used for slope protection works along the project roads in hilly and mountainous areas.



Road Safety

- ◆ 10 pedestrian crossings
 - ◆ 30 km elevated sidewalks
 - ◆ 70 well-lit bus stops
 - ◆ 2,000 solar streetlights in major junctions and bus passenger shelters
 - ◆ 25 proper signages for important institutions and social receptors
- (20 well-lit and accessible toilets with separate entrance for women installed at major bus waiting areas)

Design for protect endangered species



Associated TA

Strengthening Institutional Capacity of the Assam PWRD in Climate Change and Disaster Resilience, and Road Asset Management

Objective

- **Prepare Assam state road hazard map.**
- **Adopt a climate and disaster resilience module to a road asset management system (RAMS).**
- **Institutionalize annual updates of the road asset data set and optimize the road sector budget allocation for road construction and maintenance.**

Output

- **Assam state road hazard map prepared.**
- **Climate change and disaster risk reduction guidelines developed.**
- **Climate- and disaster-resilient road construction and maintenance plan established.**

Budget

- **\$1.0 million**

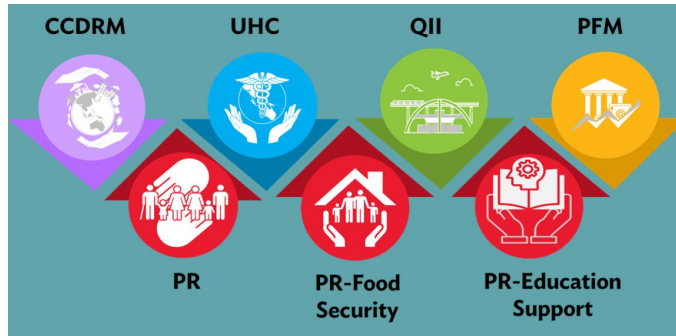
Duration

- **24 Oct 2024 – 30 Sep 2026**

Proposed JFPR Grant for Small Works

Japan Fund for Prosperous and Resilient Asia and the Pacific (JFPR)

Priority Areas



Indigenous People along Project Road A23:

- PWRD prepared an **Indigenous People Plan (IPP)**
- Suffer from a **shortage of drinking and agricultural water**.
- Walk 300 meters to 1.5 km to collect drinking water.
- Slope protection-cum-water supply facilities included in IPP to improve life quality and income.

Boro Narayanpur Deswali Village:

- Suffering from **small-scale landslides**
- Main income from slash-and-burn farming due to agricultural water shortage.
- **Slope protection-cum-water supply facilities** will improve water access and enable shift to paddy fields and vegetable cultivation.

Horizontal Drainage Borings (HDB):

- JICA implemented **Capacity Development Project on Highways in Mountainous Regions (2016-2021)**.
- **HDB introduced in guidelines** as a construction practice to reduce landslide risk by removing groundwater

Thank you

