



INTERNATIONAL TRAINING WORKSHOP

Chiang Mai Magic City

Mr. Pradya Komanee , Ms. Anongnart Panyajaroen

Date: May 13-15, 2025



Chiang Mai

Magic City & Nomad Destination

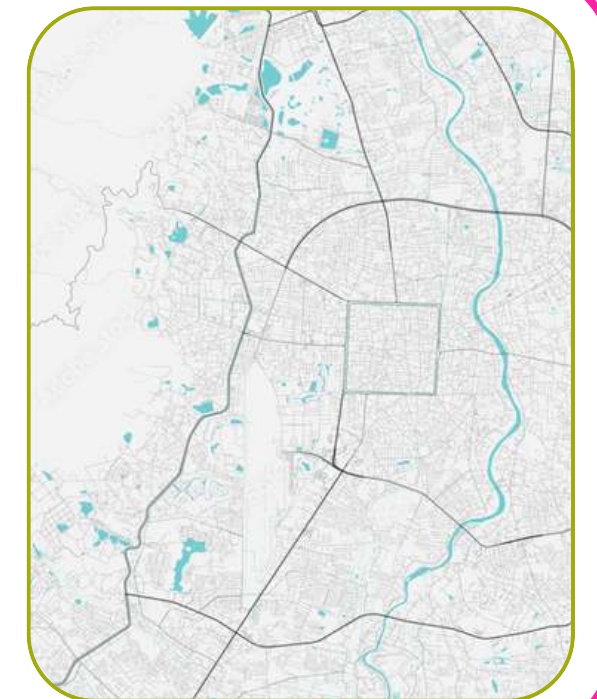
Cultural



Digital



Natural



CHIANG MAI, THAILAND

Mr. Pradya Komaneer , Ms. Anongnart Panyajaroen

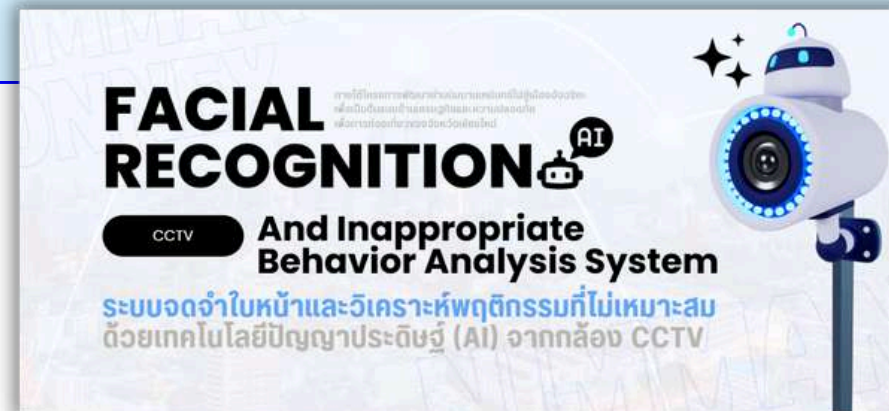
Date: May 13-15, 2025



Digital Driven City

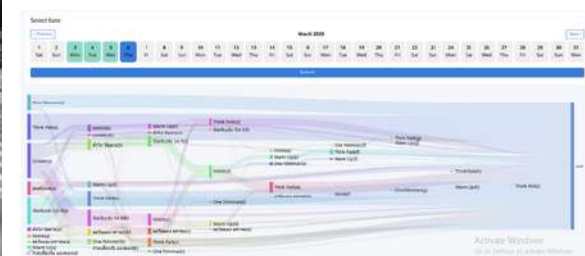
Smart Nimman

International Training Workshop on Smart Cities in Asia and the Pacific
"Building safe, resilient, inclusive, liveable and sustainable cities and community"



Behavior detection and analysis using AI Edge Terminal technology from CCTV cameras.

1. Face detection and recognition
2. Detection of unauthorized area access
3. Detection of mobile phone usage
4. Detection of vehicles in no-parking zones
5. Detection of not wearing a safety helmet
6. Detection of available parking spots
7. Detection of individuals entering the area
8. Detection of motorcycles entering restricted zones
9. Detection of more than two people entering the area
10. Fire detection
11. Weapon detection
12. People counting



Smart Signage Solution

Smart Signage is more than just a display – it's AI-powered, capable of understanding and responding to customers in real time!

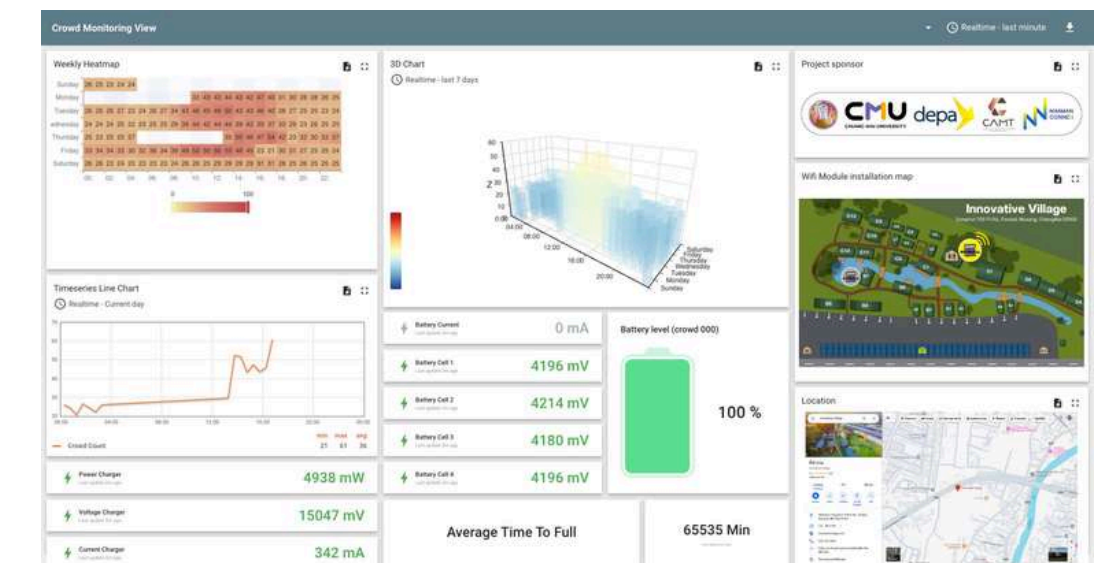
With an intelligent AI camera that analyzes gender, age, and viewer behavior, content and advertisements can be automatically tailored to the target audience. This empowers businesses to communicate more effectively, increase sales opportunities, and deliver a next-level experience that goes far beyond traditional digital signage.

Module Camera : Behavior Analysis



Creating a 3D Model of Nimman City

A data analytics system leveraging Wi-Fi Location-Based Services (LBS) will be used to analyze and map tourist behavior. This system enables the visualization of visitor density in specific areas, providing valuable insights that support the development of a 3D city model of the Nimman district.



CHIANG MAI, THAILAND

Mr. Pradya Komanee , Ms. Anongnart Panyajaroen

Date: May 13-15, 2025



Every country have a 3 Season But Chiang Mai have 4



CHIANG MAI, THAILAND

Mr. Pradya Komaneer , Ms. Anongnart Panyajarn

Date: May 13-15, 2025



Our Season 4 is ...

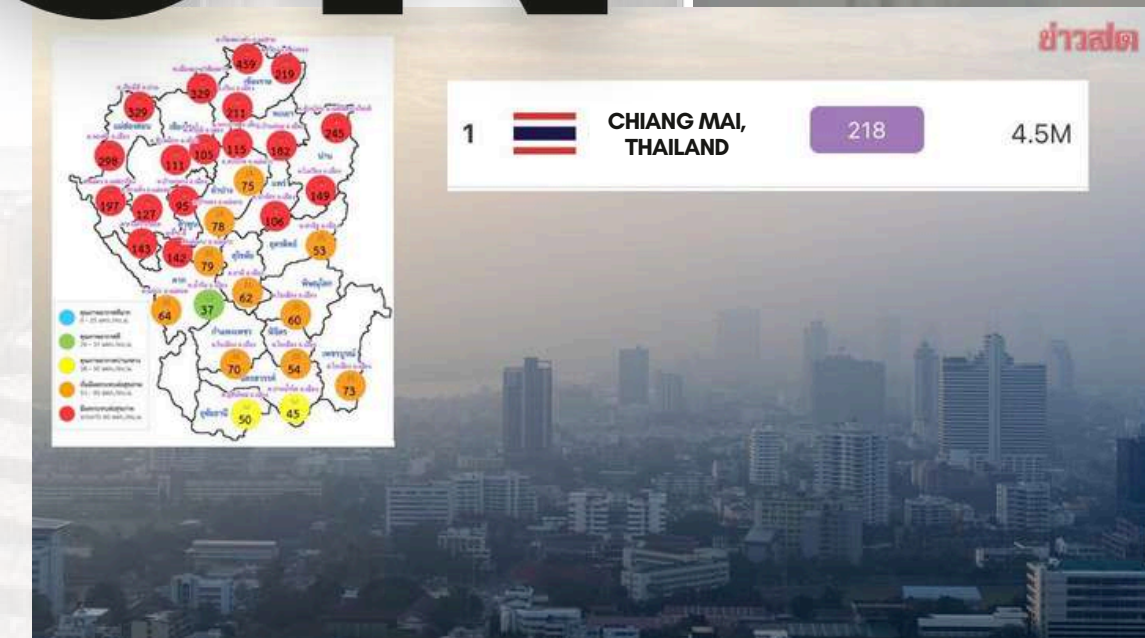
POLLUTION

Chiang Mai **rank 1st** in the world for PM 2.5 exceeding the standard level.

CHIANG MAI, THAILAND

Mr. Pradya Komaneer , Ms. Anongnart Panyajaroen

Date: May 13-15, 2025



PM 2.5 PROBLEM

Chiang Mai **rank 1st** in the world for PM 2.5 exceeding the standard level.

Agricultural Burning



Geographic & Weather Conditions



Urban Pollution Sources



Seasonal Factors



Cross-Border Pollution



Chiang Mai ranks 1, especially in the **Santitham Road.**



CHIANG MAI, THAILAND

Mr. Pradya Komaneer , Ms. Anongnart Panyajaroen

Date: May 13-15, 2025



2024, CHIANG MAI FACED DEVASTATING FLOODING



CHIANG MAI, THAILAND

Mr. Pradya Komanee , Ms. Anongnart Panyajaroen

Date: May 13-15, 2025



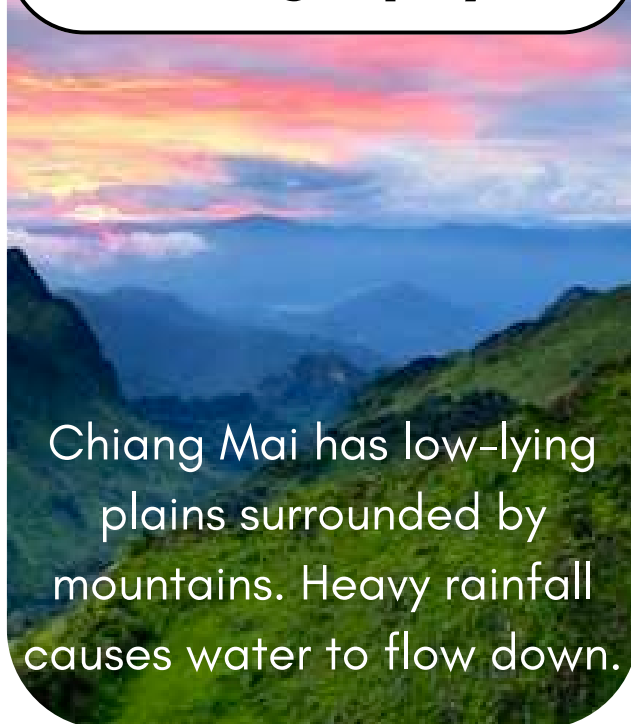
FLOODING

that caused widespread impacts on the economy society and infrastructure (particularly disrupting transportation networks and damaging residential areas.)

“ Chiang Mai frequently faces flooding issues, especially during the monsoon season (around August to October). The main causes and solutions are as follows: ”

Causes of Flooding in Chiang Mai

Geography



Chiang Mai has low-lying plains surrounded by mountains. Heavy rainfall causes water to flow down.

Climate Change



Leads to unpredictable and unusually heavy rainfall

Insufficient Drainage Systems



Urban expansion has outpaced the development of proper water drainage infrastructure

Deforestation



Reduces the soil's ability to absorb water

International Training Workshop on Smart Cities in Asia and the Pacific
“Building safe, resilient, inclusive, liveable and sustainable cities and community”

V
Kok River,
Chiang Rai

Ping River

CHIANG MAI, THAILAND

Mr. Pradya Komaneer , Ms. Anongnart Panyajaroen

Date: May 13-15, 2025

AKIN SONGNOR - PHOTO ©



Our Digital solution



Digital solution PM 2.5 PROBLEM

on process

Command Center for prevention and resolution of forest fires and PM2.5, Chiang Mai Province



Web application “CMDSS PM2.5” and “FireD”

2020: Start of support as the integrated control center
2021: Development of application “FireD”
2022: Development of application “CMDSS PM2.5” and web database
Authority to manage applications, etc. was delegated to the Chiang Mai Provincial Administration so that the Administration itself could manage them.
Source: Chiang Mai Provincial Administrative Organization



Generate negative ions to capture dust using solar power, reducing PM2.5 by 50% in a 30 sq.m. area within 1 hour.

Smart DustPole, Chiang Mai University

CHIANG MAI, THAILAND

Mr. Pradya Komanee , Ms. Anongnart Panyajaroen

Date: May 13-15, 2025



Digital solution FLOODING

on process

Automated Telemetry Water Level Monitoring System

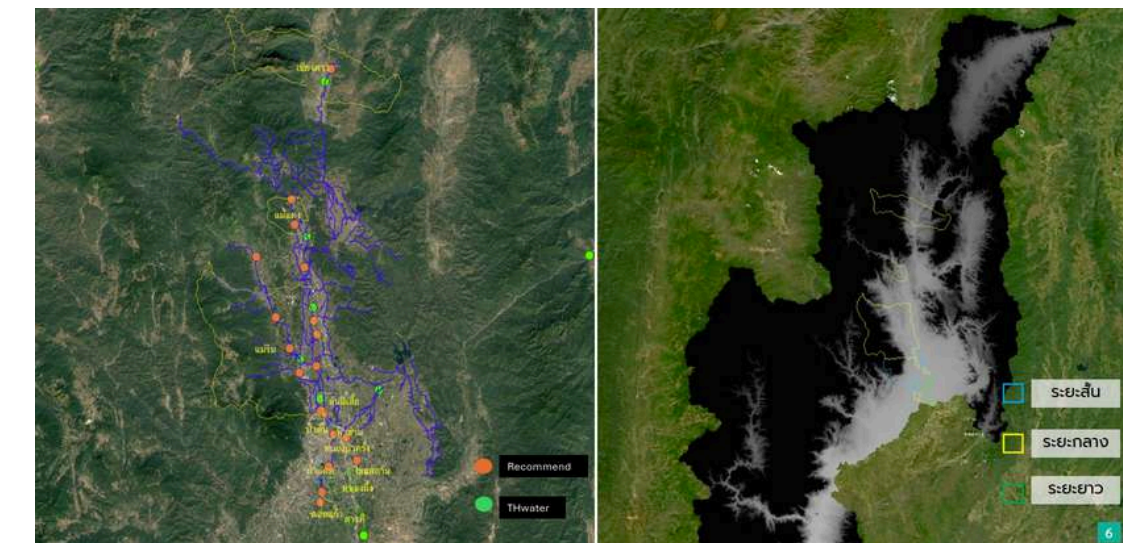


Decision Support System: DSS

sensor + AI + warroom



(Command Center for prevention and resolution of forest fires and PM2.5, Chiang Mai Province)



CHIANG MAI, THAILAND

Mr. Pradya Komaneer , Ms. Anongnart Panyajaroen

Date: May 13-15, 2025



Chiang Mai is a truly captivating city

- ✓ Captivating Atmosphere
- ✓ Affordable Living
- ✓ Delicious Cuisine
- ✓ Vibrant Neighborhoods
- ✓ Ideal for Lifestyle & Work

CHIANG MAI, THAILAND

Mr. Pradya Komaneer , Ms. Anongnart Panyajaroen

Date: May 13-15, 2025



International Training Workshop on Smart Cities in Asia and the Pacific
"Building safe, resilient, inclusive, liveable and sustainable cities and community"



Join Us in Advancing Chiang Mai Smart City

We are currently seeking innovation **prototype** solutions
that can drive urban development, enhance quality of life, and support
data-driven city planning. Let's co-create the future of Chiang Mai
together.

CHIANG MAI, THAILAND

Mr. Pradya Komaneer , Ms. Anongnart Panyajaroen

Date: May 13-15, 2025

