

Second Regional EST Forum

11-12 December 2006

Yogyakarta, Indonesia



PRESENT ROAD AND TRANSPORT NETWORK OF MONGOLIA

Transport types	Length /thous.km/	%
Road	49,308	50,25
Railway	1,815	1,85
Civil Aviation	46,500	47,39
Maritime	500	0,51
Total	98,123	100,00



- ◆ Airports with paved runway
- Airports with gravel runway
- Airports with earth runway

Railway Network

- Paved road
- Gravel road
- Earth road

Total length of road network 49308
 - State road 11219km
 - Paved road 1958km
 - Gravel road 2436km

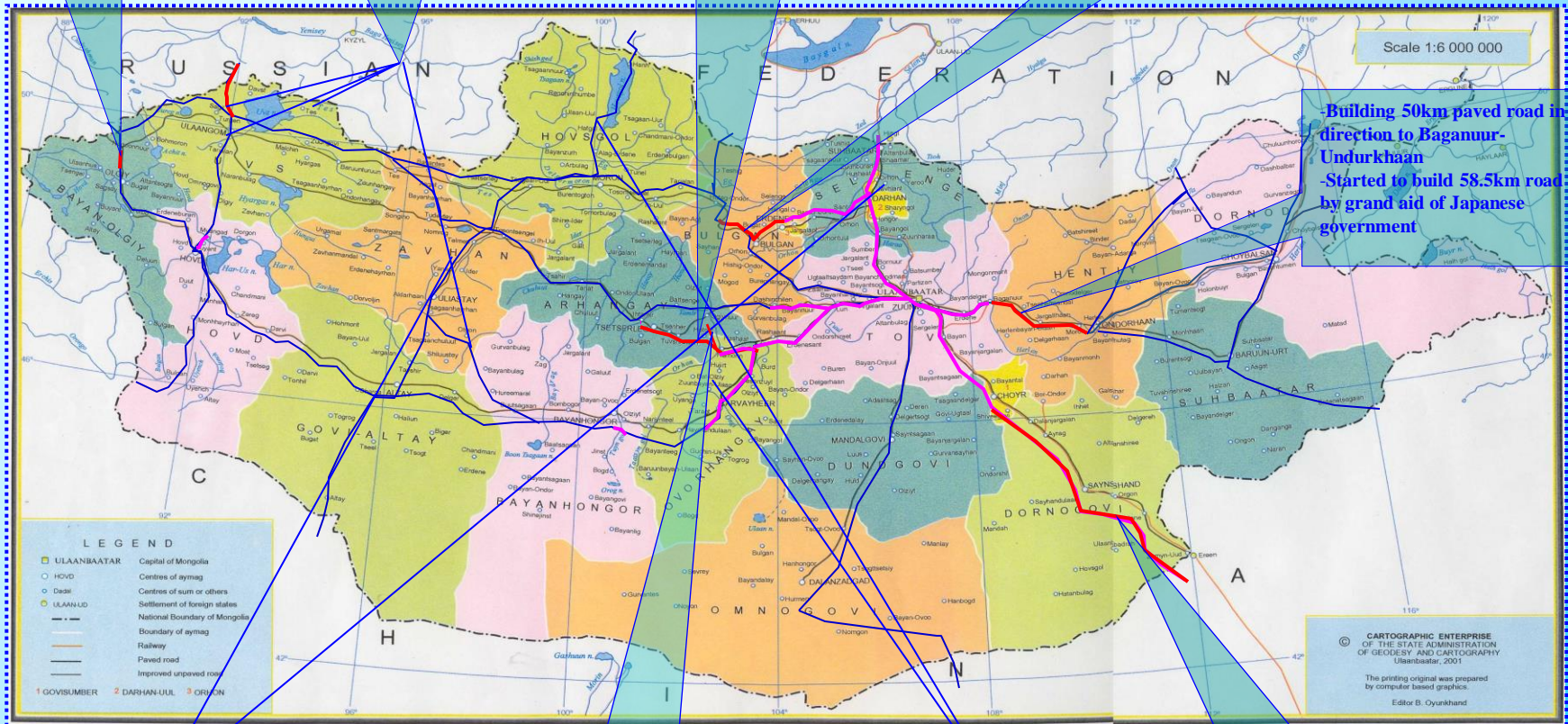
ONGOING PROJECTS IN ROAD SECTOR

Building 30 km paved road in direction to Ulgii - Tsagaan funded by domestic investment

- Building 58km paved road in direction to Ulaangom -Khandgait
 - Teelin gol in 75 long m.
 - Nari gol in 200long m
 - Building concrete bitum bridge in 180,55long m in Buyantiin gol

Planned to build gravel road of 46 km in direction to Khar Khorin-Tsetserleg funded by World Bank and build paved road in some certain gravel road sections

Building road 146 km in direction to Erdenet-Bulgan -Unt funded by Kuwait Fund and be completed by 2007.



- Building 50km paved road in direction to Baganuur-Undurkhaan
 - Started to build 58.5km road by grand aid of Japanese government

In frame of "Transport Infrastructure Development" project, building 96 km gravel road in direction to Zavkhan, Darkhan and Selenge provinces funded by German government

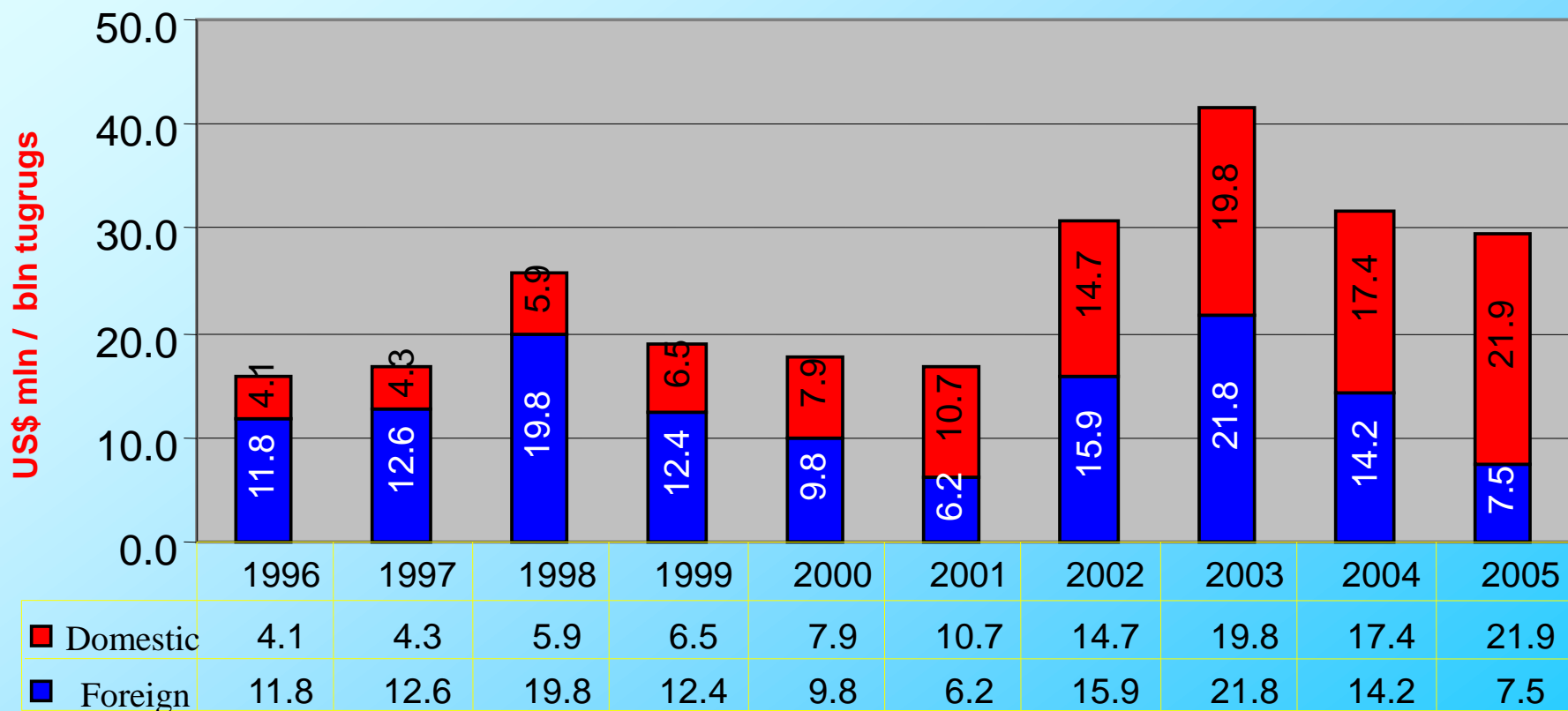
Building 46km paved road in direction to Kharkhorin-Khoshootsaidam, funded by Turkey

With purpose to improve Mongolian tourism roads, started building over 120 km roads in Arkhangai, Khuvsgul and Ovrkhangai aimags

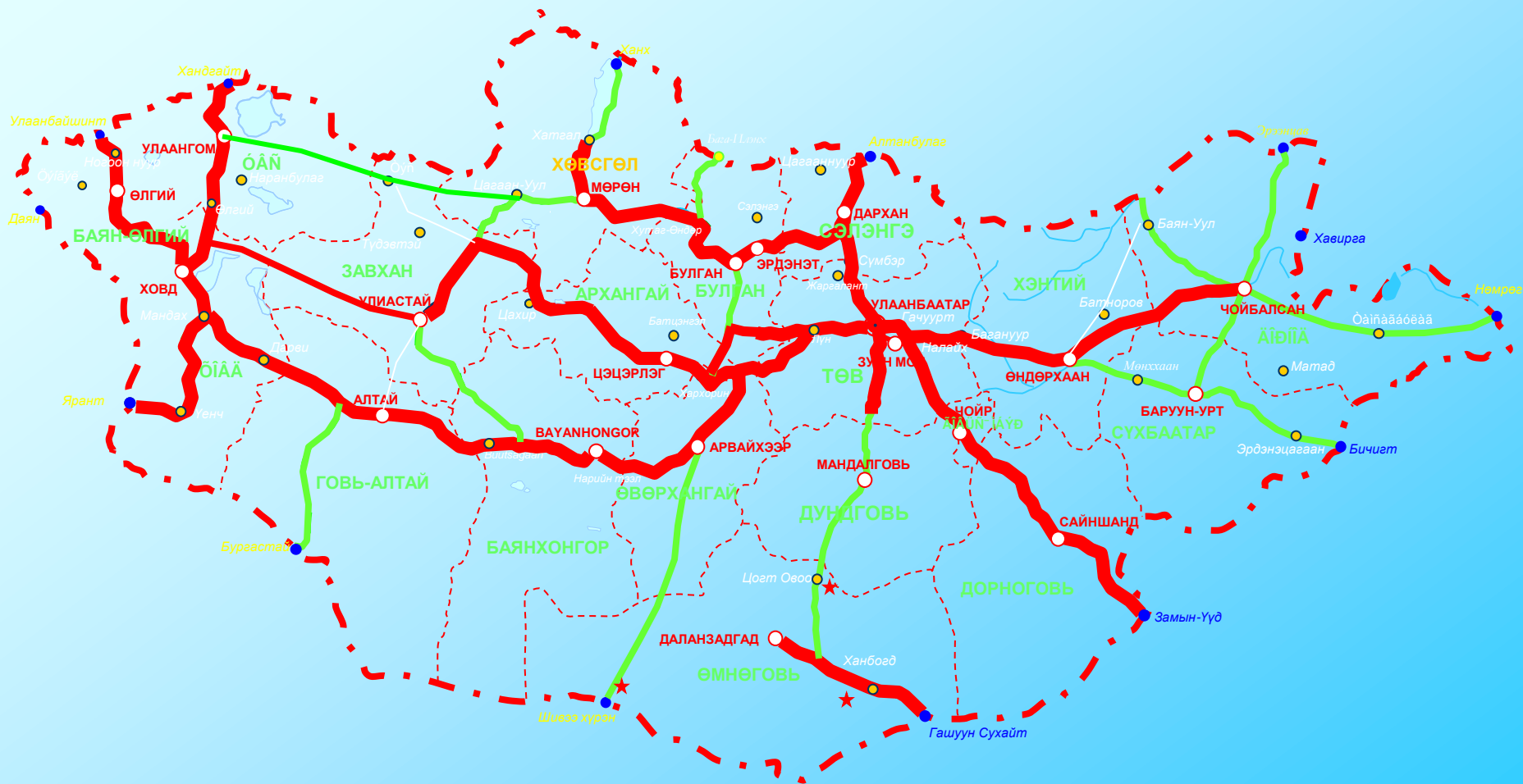
Building 431.7 km paved road in direction to Choir- Zamiin Uud, funded by ADB and Korea

CURRENT FINANCE SITUATION OF ROAD SECTOR

À. INVESTMENT IN ROAD SECTOR



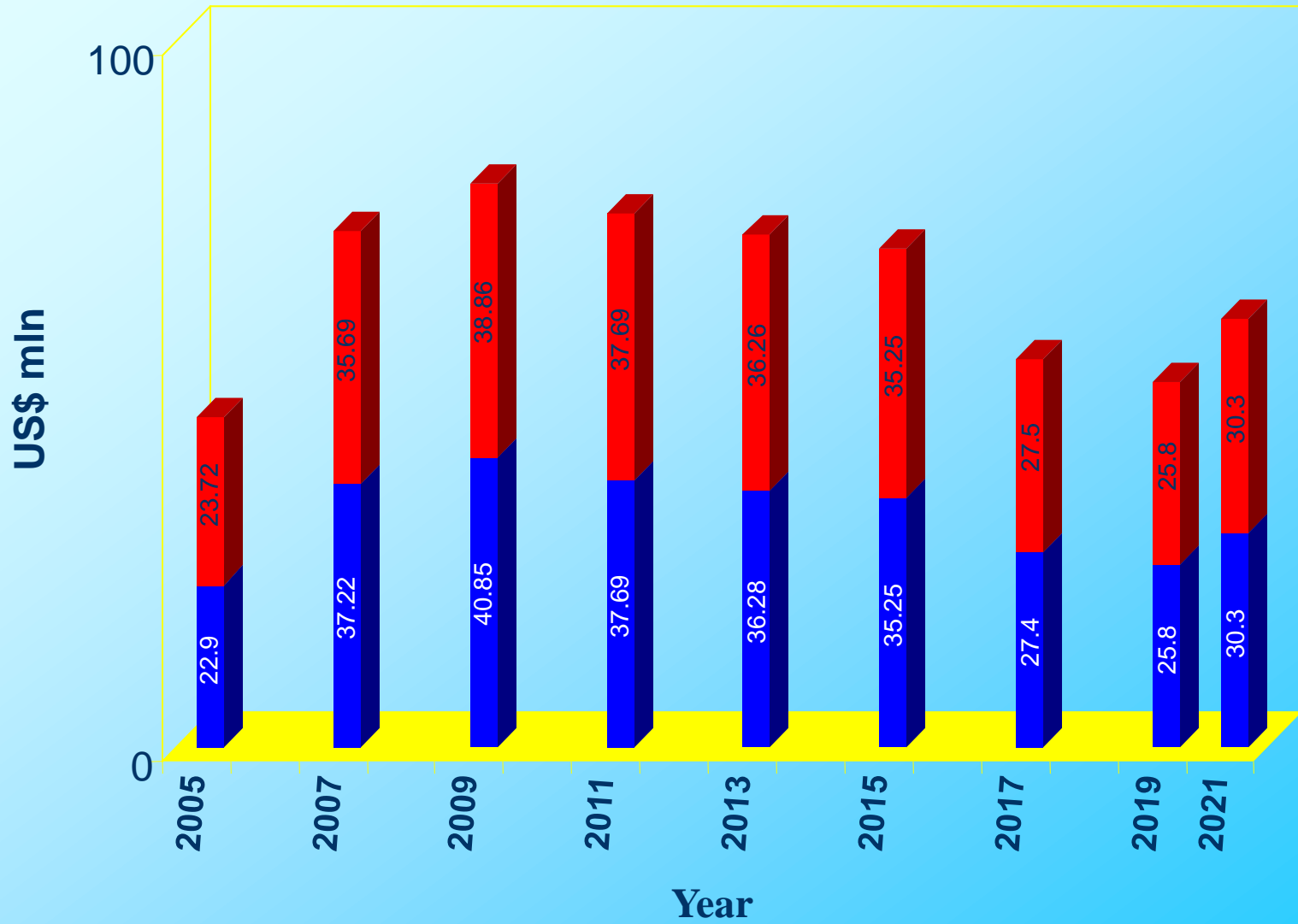
PLAN UNTIL 2020



Paved road – 6472 км

Improved and gravel road – 3866 км

INVESTMENT UNTIL 2020



Road Transport

- **The number of motor vehicles has increased by 50% since 1999 (cars by 100%, buses by 80%)**
- **More than 50% of motor vehicle fleet > 10 yrs old**
- **Vehicles subject to annual mechanical and emissions inspection (TSCs in UB and aimags)**
- **Road transport services (freight and passengers) operated by private sector, regulated by MRTT**
- **Road safety a concern, with driver behaviour a significant factor in traffic accidents**

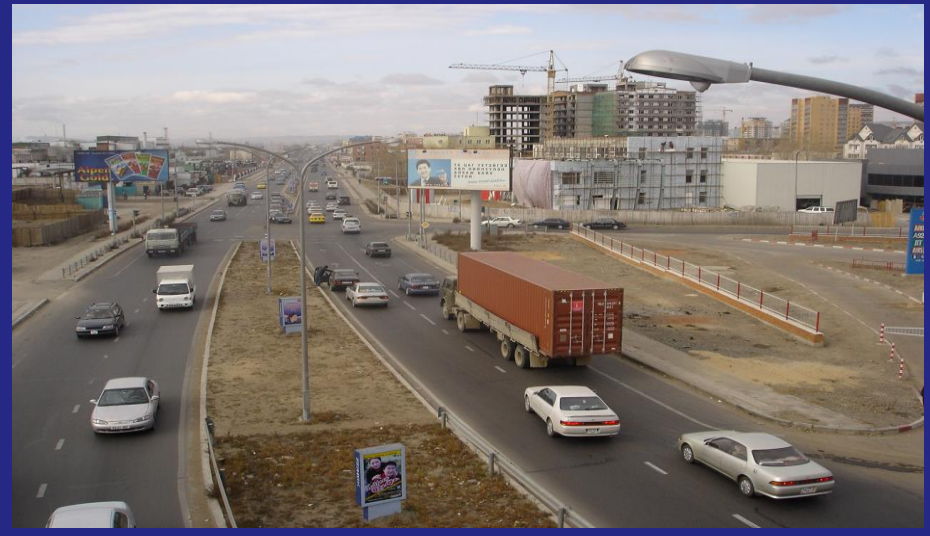
PRESENT STATUS

- **Road transport services have been privatized and the private sector has taken over most of the services.**
- **A legal environment has been established to regulate relations with respect to road passenger and freight transportation**
- **Passenger car numbers have increased by an average of 13 percent per annum over the last 10 years, with 1 passenger car per 6 households**

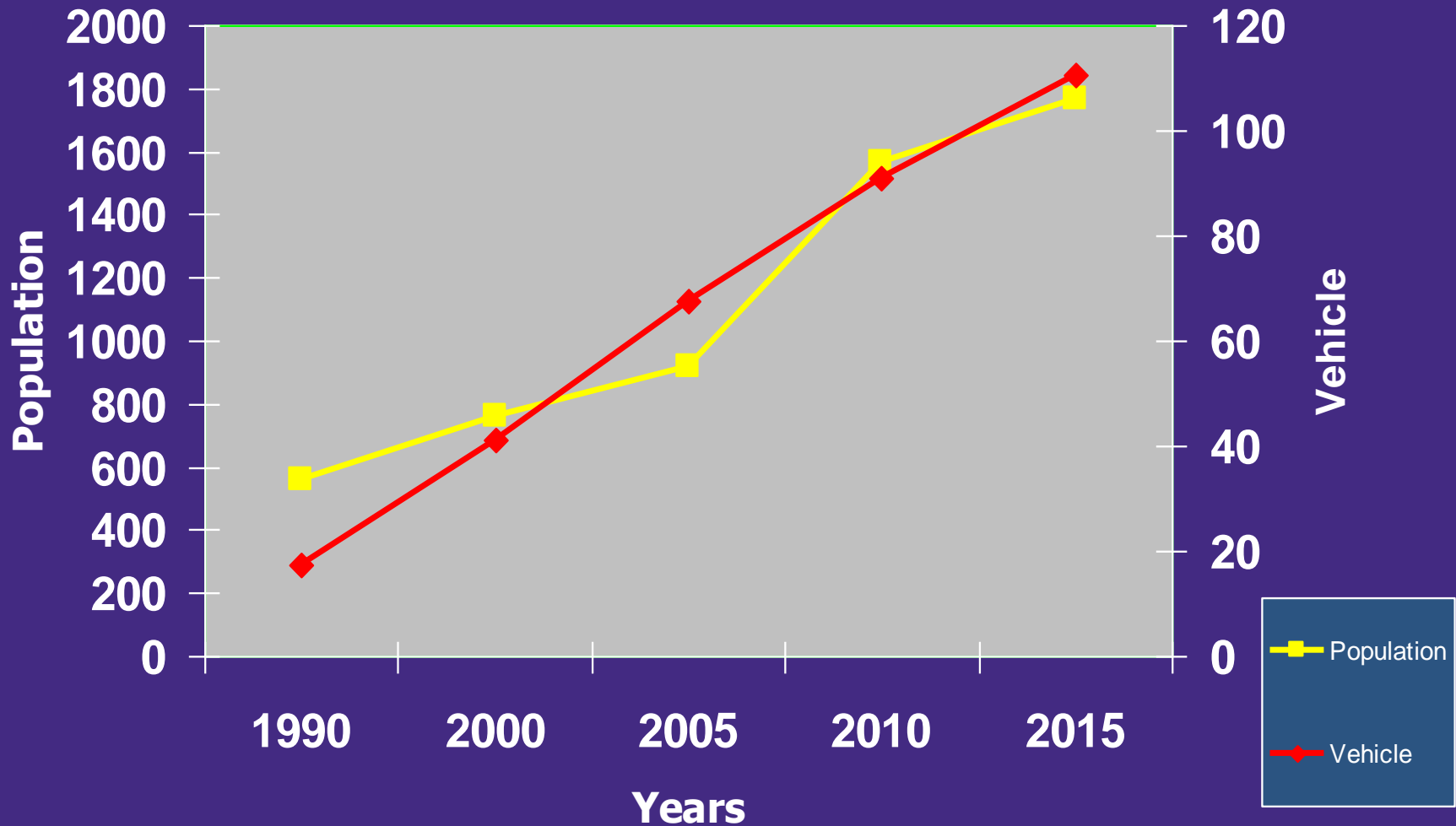
CITY VEHICLE MODES



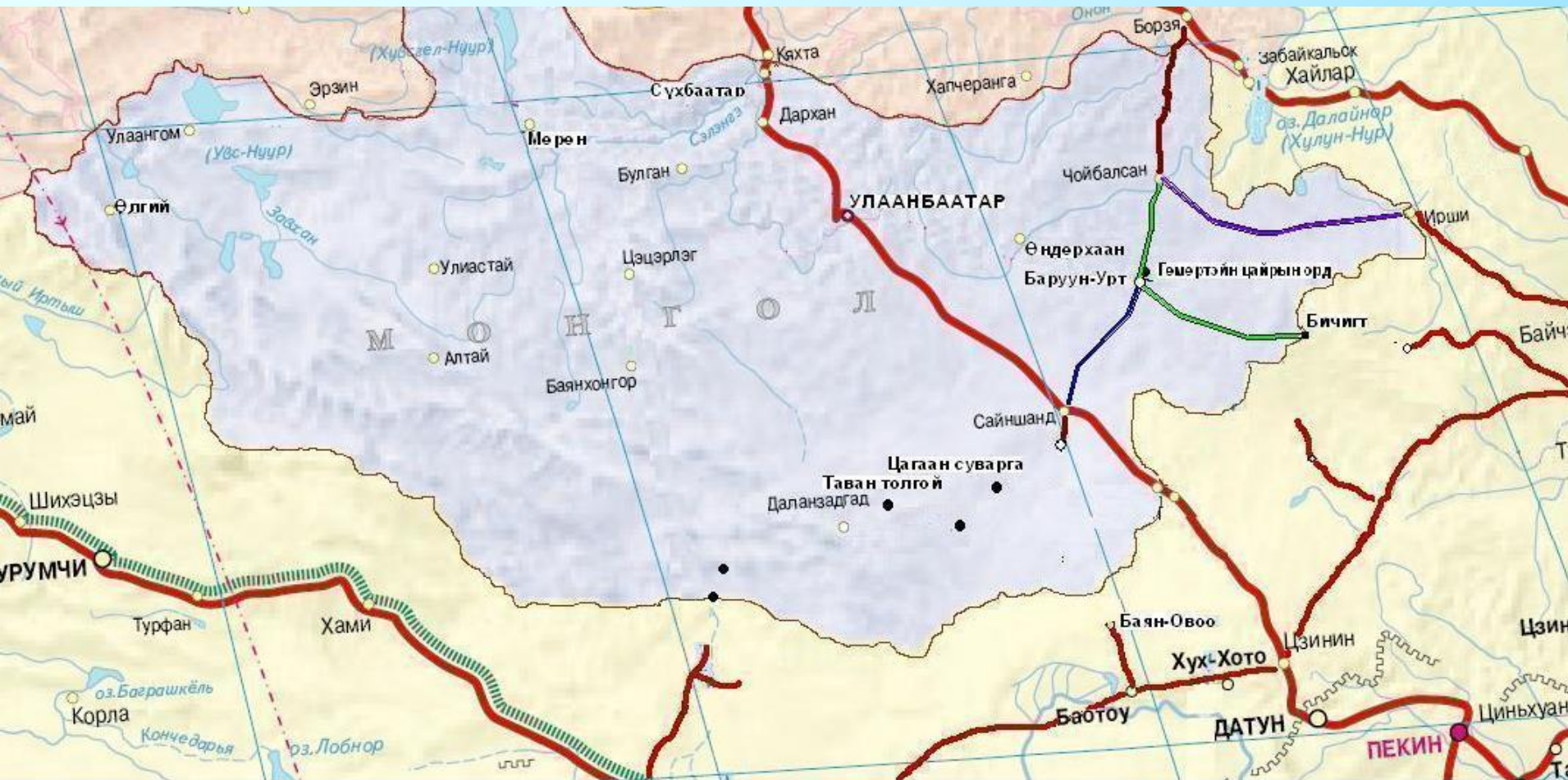
CITY VEHICLE MODES



POPULATION AND VEHICLES IN UB



RAILWAY TRANSPORT



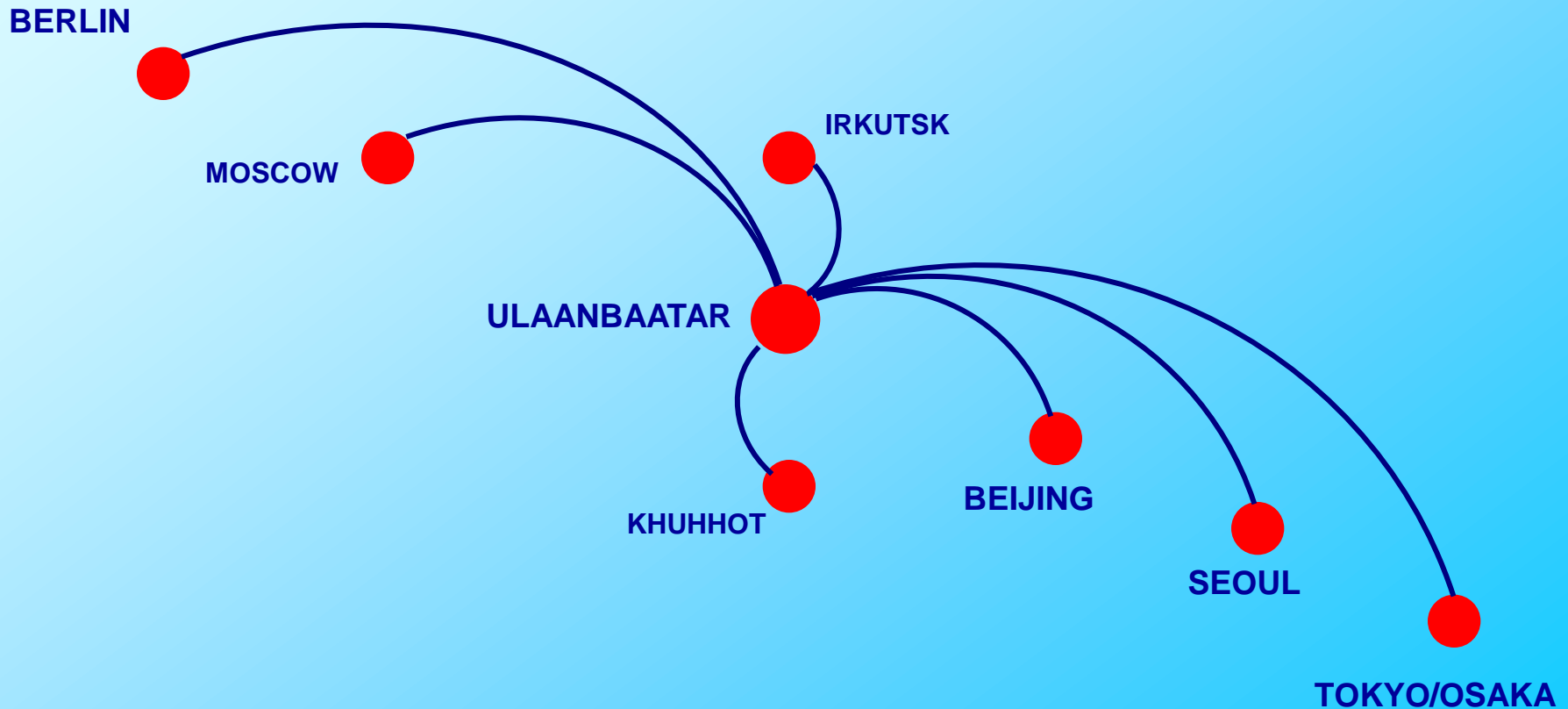
- Зүүн бүсийн зам /Хоёрдугаар шат/
- Зүүн бүсийн зам /Гуравдугаар шат/
- Зүүн бүсийн зам /Дөрөвдүгээр шат/

Зүүн бүсийн төмөр замын сүлжээ нь нефть, төмөр, цайрын болон бусад орд газруудыг ашиглах, транзит ачааны тээвэрлэлтийг нэмэгдүүлэх, аялал жуулчлалыг хөгжүүлэх, хоорондоо алслагдсан хот суурингуудыг төмөр замаар холбох, мал аж ахуйн гаралтай түүхий эдийг тээвэрлэх, ачаа, зорчигч тээврийн хүчин чадал, улсын экспортын нөөцийг нэмэгдүүлэх бүс нутгийн тэнцвэртэй хөгжлийг хангах зорилтыг хэрэгжүүлэхэд ач холбогдолтой.

Planning a Feasibility study for new Railway construction in Eastern region of Mongolia (Dornodgobi, Dornod, Sukhbaabar)

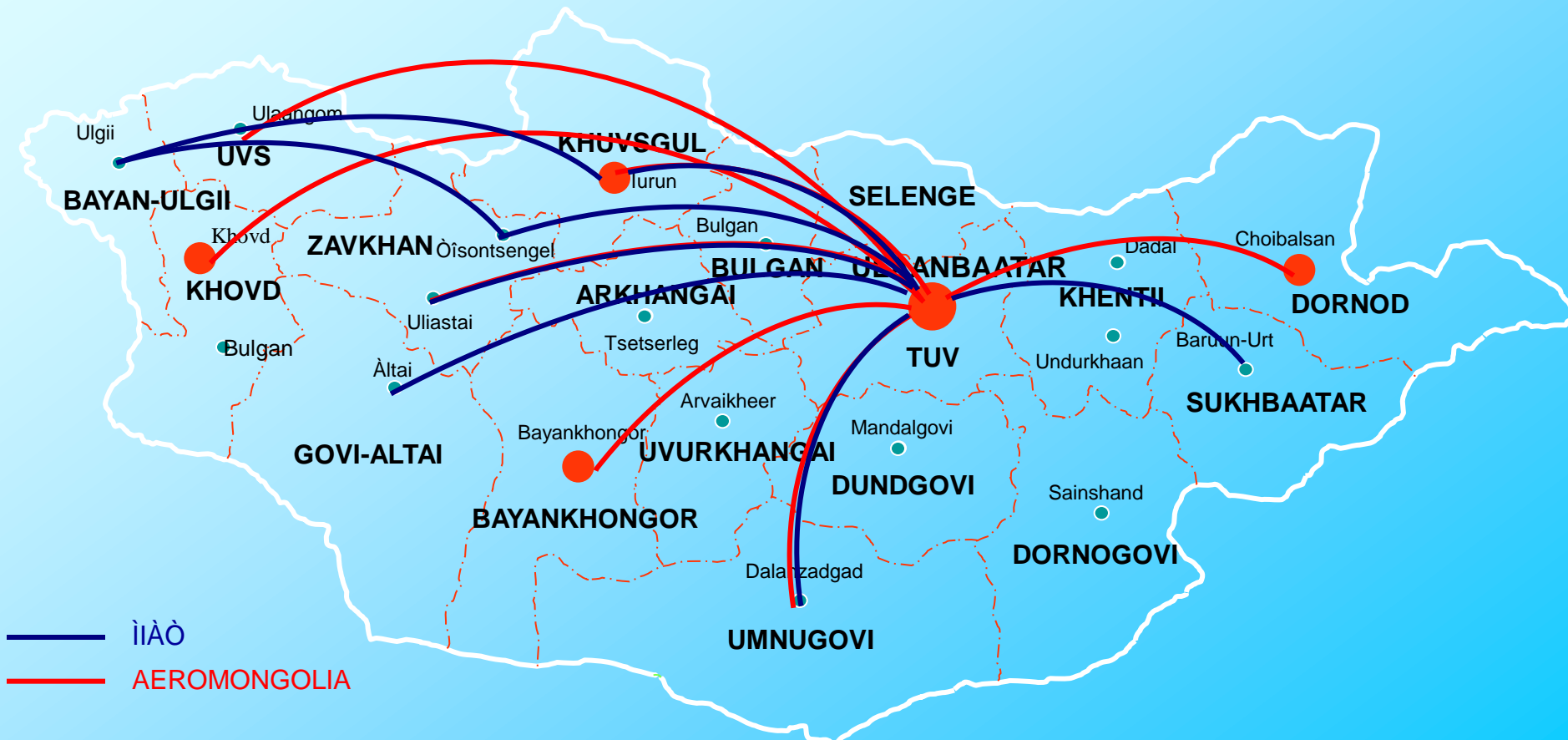
International Air Transport

- Increase aircraft fleet for International flights.
- Expand international flight market.
- Develop international air freight transport.



Domestic flight operation

- Encourage foreign and domestic private investment
- Implement civil aviation fleet renovation



‘Sukhbaatar’ – freight and passenger transportation Vessel

- **800 hp vessel ‘Sukhbaatar’ has barge-towing capability but is not used at present for freight transport**
- **‘Sukhbaatar’ has 50-100 passenger capacity and capability to resist against the wave of up to 10 magnitude provides scenic cruises on Khusvgul**
- **‘Sukhbaatar’ is owned and operated by private joint-stock company ‘Huvsgul waterways’**



Selenge river transport vessels and facilities

- Altanbulag' - 170 horse power, diesel engine, 30 km/hour speed capacity, 38l diesel/hour usage, built in 1978
- Two dry commodity barges built in 1964 each with 150 ton capacity are operational, but not in use at



ROAD CONDITION



INTERSECTION TRAFFIC LIGHT REGULATION



VEHICLE STATUS



Thank you for your attention