

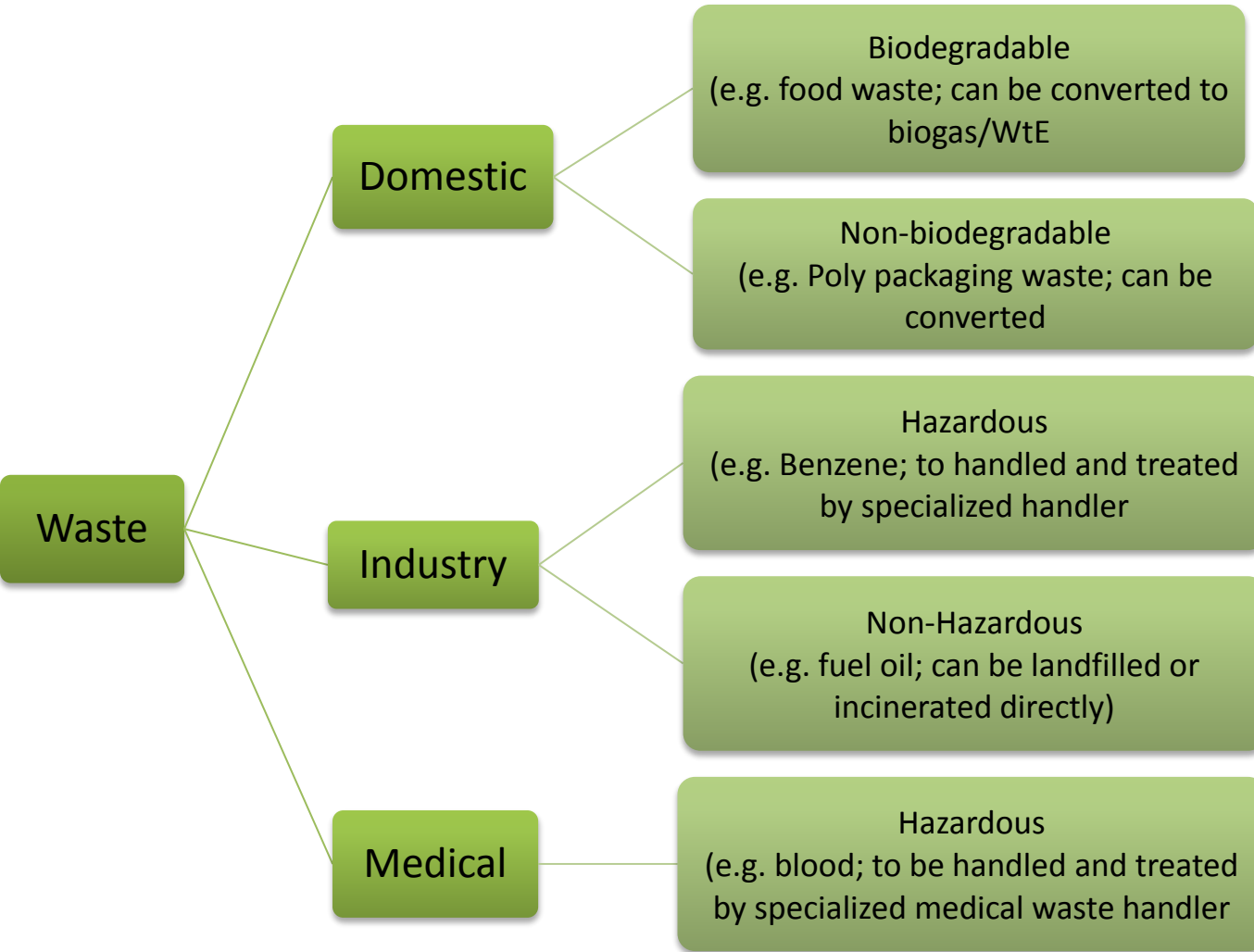
# Bangladesh WtE Road Map 2025



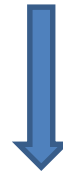
**Country Presentation: Bangladesh**



# Types of Wastes in Bangladesh



TRASHONOMICS:  
BENEFIT OUR LIVES

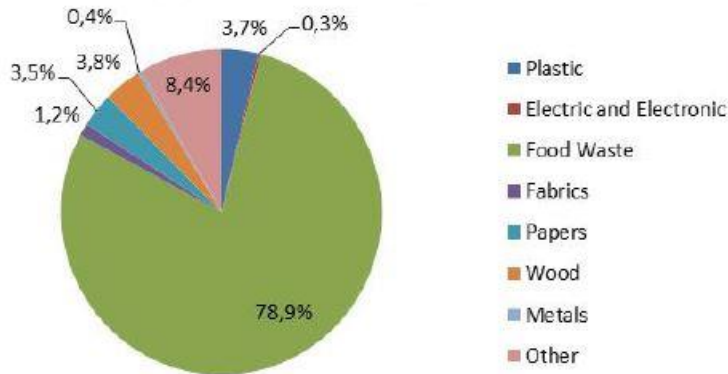




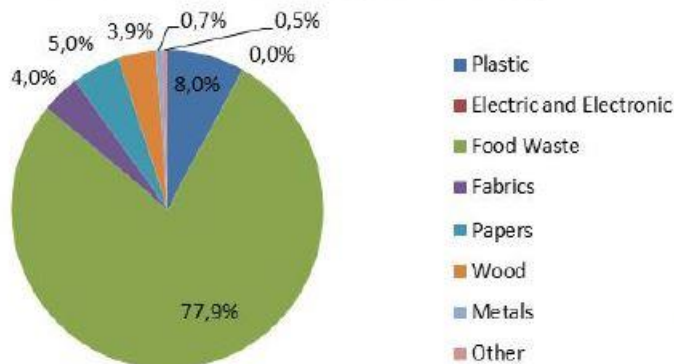
# Why Focus on Waste-to-Energy?

## Waste composition

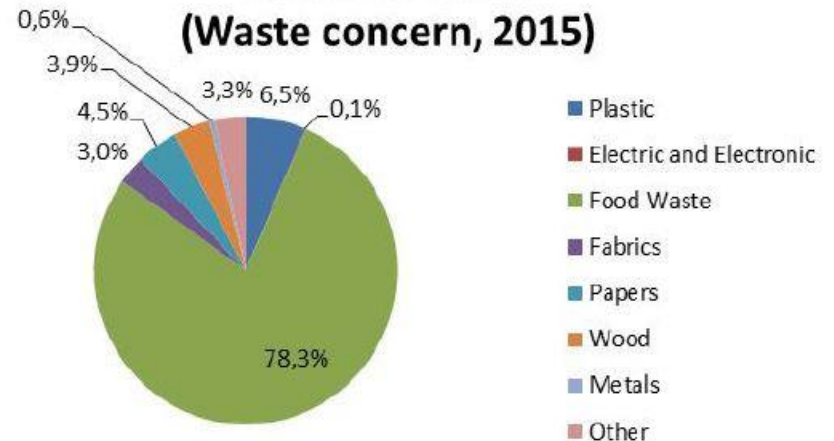
**Household waste  
(Waste concern, 2015)**



**Commercial waste (calculated)**

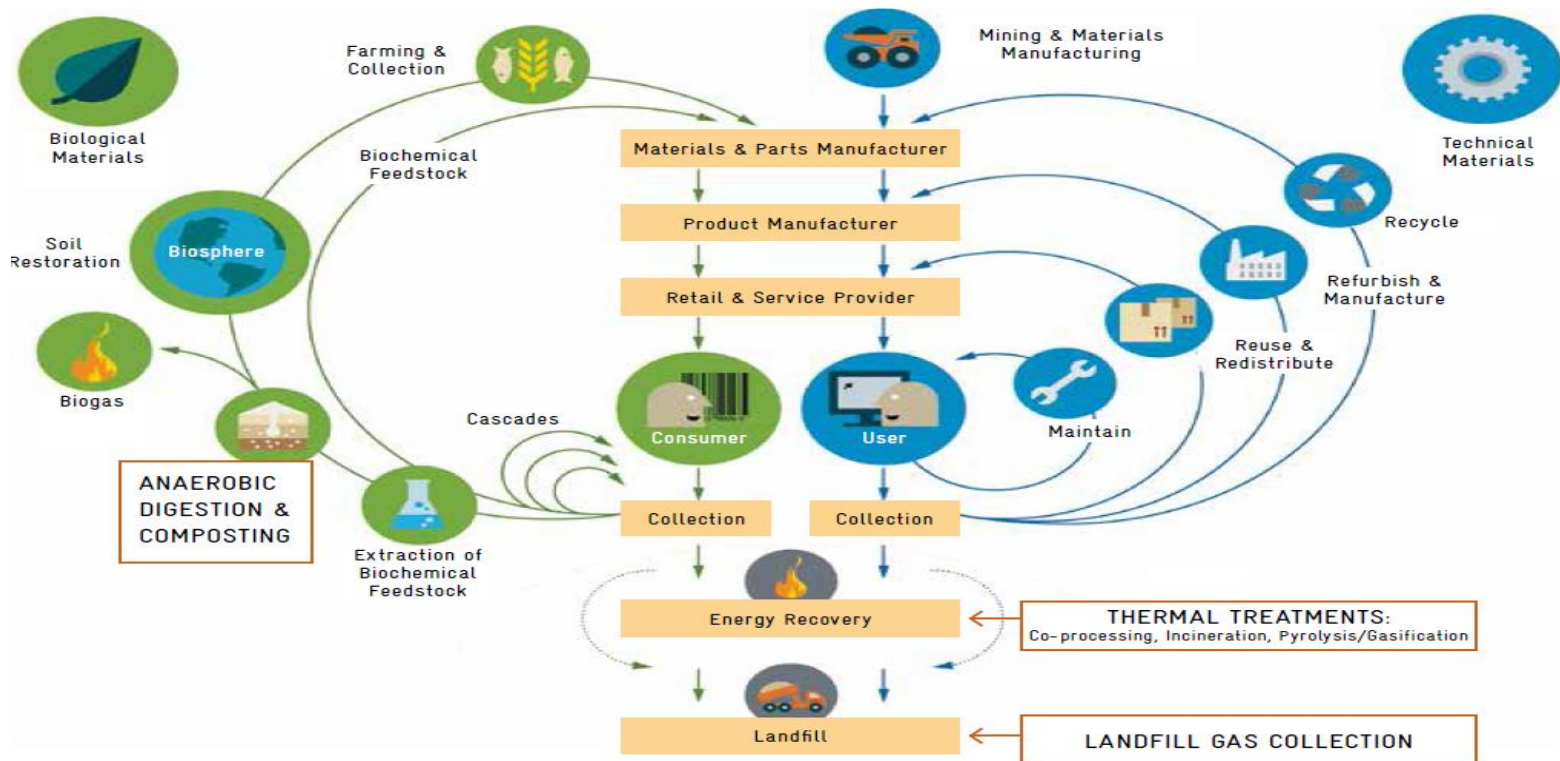


**Landfilled waste  
(Waste concern, 2015)**





# Waste-to-Energy in the Circular Economy





# The WtE Road Map 2025

## Enhancing Competences in WtE management

- A. **Enhancing integration and articulation of stakeholders and designing institutional arrangements – vertical and horizontal communications**
- B. **Support in formulation**
  - 1. **Waste to Management National Strategy – sustainable cities, eco-towns : priorities by 2025**
    - **2019 -2020 Plan of action (Biomass to Energy, MSWT to Energy, Plastic to energy, Medical Waste to Energy)**
  - 2. **Explicit financial incentives and operational guidelines**
  - 3. **Explicit Waste Management Regulatory Framework (Central and city Corporations)**
  - 4. **Competence upgrading program on Technology Assessment**
  - 5. **Guidelines for planning and operating Eco-recycling centers**



# WtE Operational Blueprint 2025

	Function	Stakeholders	Deliverables
Macro Policy Level Coordination	High level National Task Force	MoI –PMO- MOPEMR	Overall guidance
Meso Level	<ul style="list-style-type: none"> <li>- Coordination articulation</li> <li>- Technical support</li> </ul>	Local Government (LGRD) and Power (MoPEMR)	Manage, monitor and evaluate the tasks of the Working Groups, take corrective action when necessary
Micro level	<p>Areas to be developed</p> <ol style="list-style-type: none"> <li>1. Financial Instruments</li> <li>2. Regulatory Framework</li> <li>3. Technology Management and Assessment</li> <li>4. Capacity upgrading</li> <li>5. Institutional Arrangement and Communication</li> </ol>	<p>Key Ministries</p> <ol style="list-style-type: none"> <li>1. MinFIN</li> <li>2. MoPEMR</li> <li>3. MOEFCC</li> <li>4. MoI</li> <li>5. MoI</li> <li>6. PMO</li> <li>7. Academia , Business and Civil Society</li> </ol>	<p>Ensure articulation among stakeholders; identify technological &amp; financial solutions; legal compliance; improve local competencies</p> <p>In Planning and Designing, Manufacturing, Operating, Maintaining and Innovating</p>



## Conclusion

- ❑ Some Initiatives have been taken on large scale Waste to Energy Industry in Bangladesh.
- ❑ Total 47,000 Tons/day waste will be produced in urban areas of Bangladesh in 2025.
- ❑ Considering 75% organic fraction of MSW, about 3.5 million m<sup>3</sup>/day biogas can be produced by (wet/dry) anaerobic digestion process.
- ❑ From which 7 GWh/day energy can be produced.

