

Road Safety Countermeasures on Blackspots on National Highways of Bangladesh



Md. Kamrul Haque
Superintending Engineer
Ministry of Road Transport and Bridges
Government of People Republic of Bangladesh

Presentation outline

Institutional setup of RHD

Overview of road sector and policy environment

Priorities in road sector

Identification of projects for implementation

Challenges

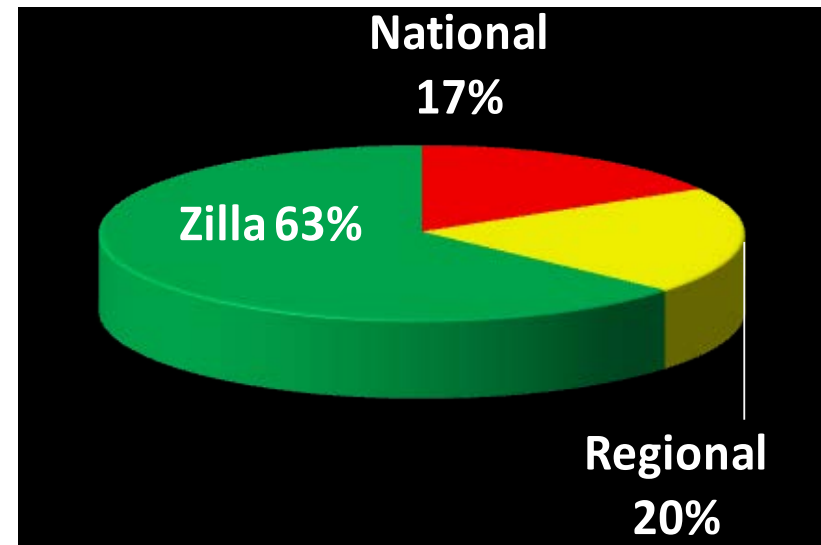
RHD Road Network

National -- 3,570 km

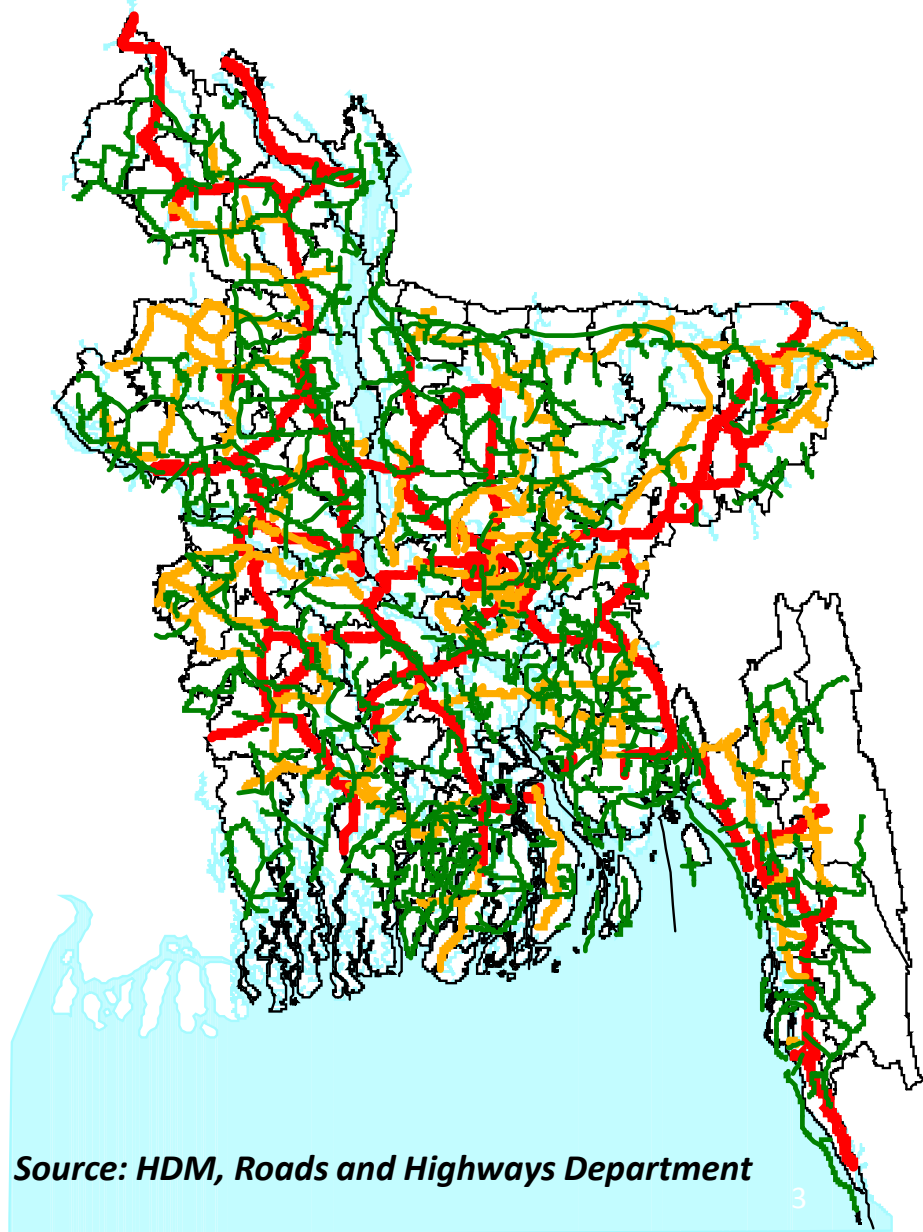
Regional -- 4,323 km

Zilla -- 13,678 km

Total Roads 21,571 km

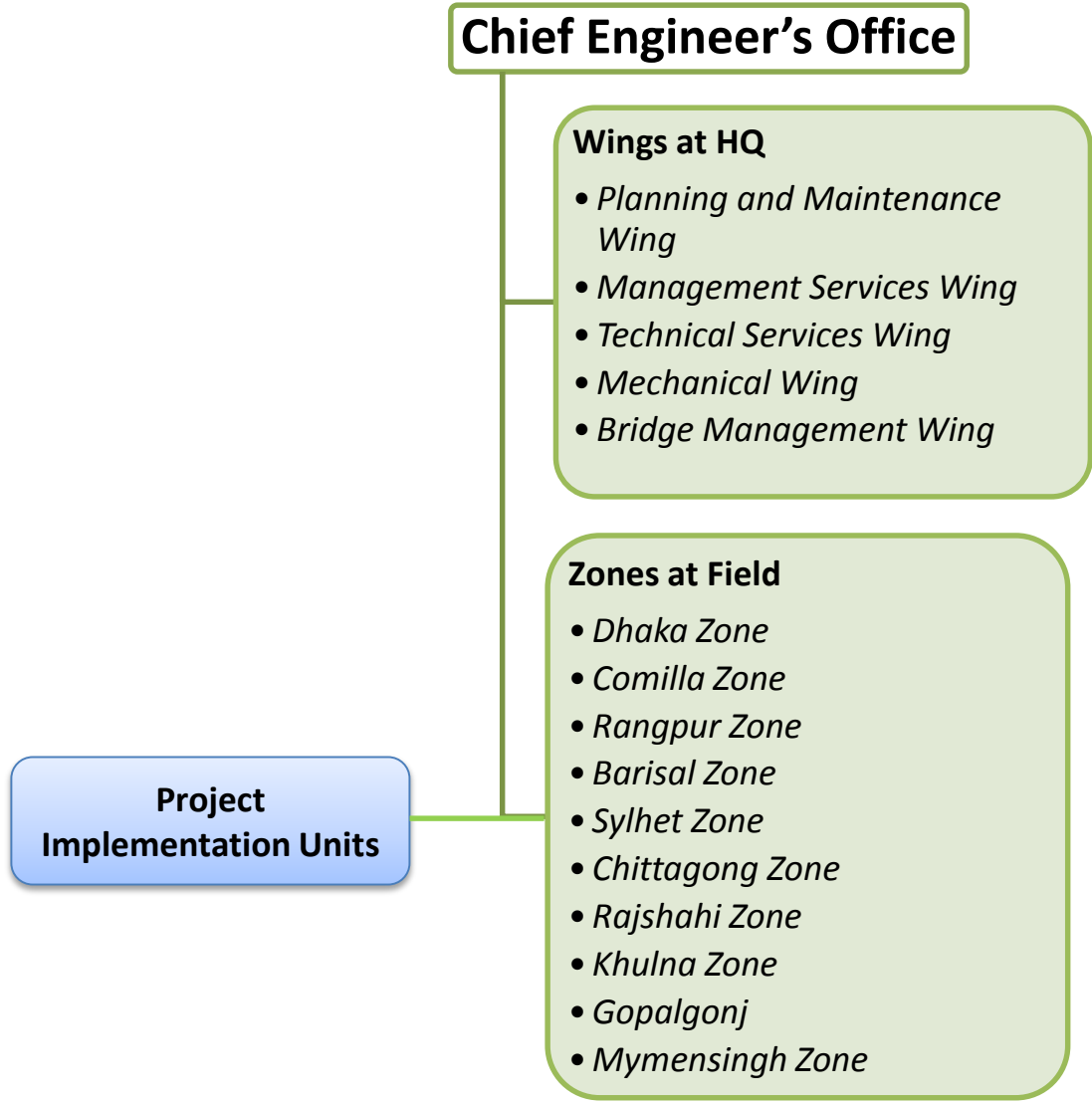


Bridges: 4,507 nos
Culverts: 13,678 nos

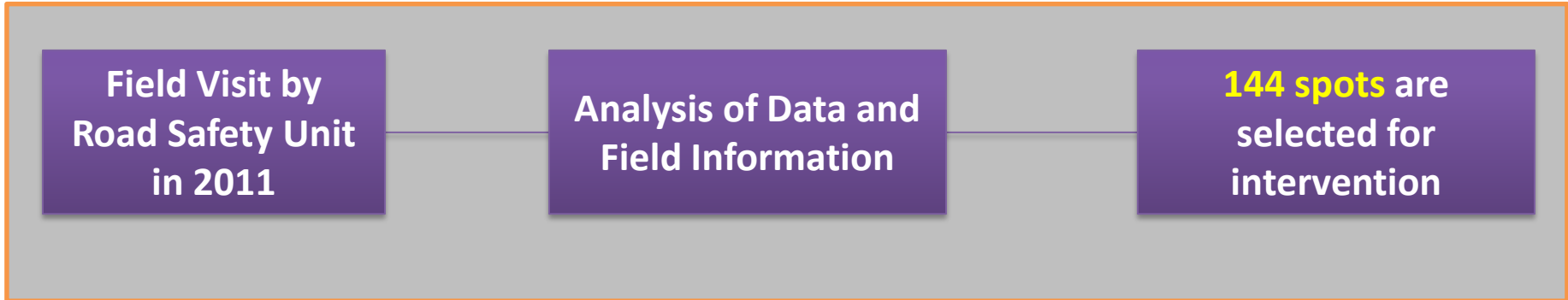
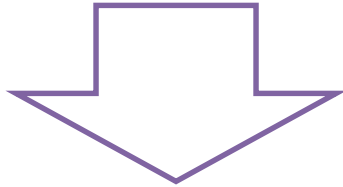
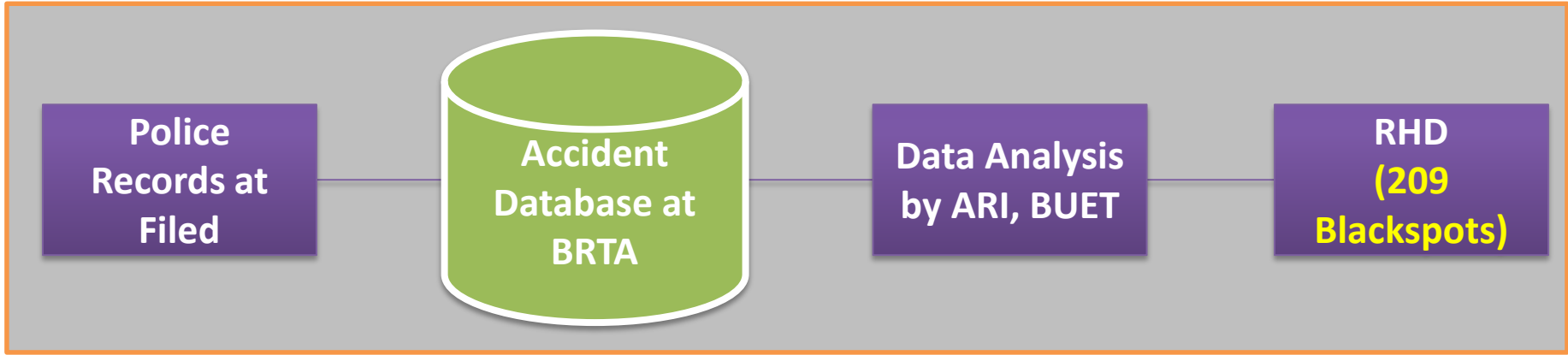


Source: HDM, Roads and Highways Department

Institutional Setup of RHD



Identification of Blackspots



Selected blackspots for intervention



Engineering countermeasures

Interventions

- Widening of Pavement
- T & Y Junction or Intersection development
- Easing of Curves
- Bus-Bay
- Bazar Area Development

Interventions

- Hard Shoulder Construction
- Construction of Road Divider
- Super Elevation Correction
- Foot-over Bridge
- Reflector Road Marking, Sign, Signal

Black Spots at T/Y Junctions

**Grade difference
between National
Highways and the
side roads**

**Lack of uniformity of
construction by RHD &
LGED**
Road side activity
**Illegal and on-street
parking**

**Side Impact or Rear-end
Collision**

Black spots at sharp curves

**Land Constraints
Built up Area**

**Compromised Design
at curves**

**Head-on Rear-end or
Side Impact Collision**

Black Spots at Bazaar Areas

**Road Side
Activity**

**Frequent
Pedestrian
Crossing**

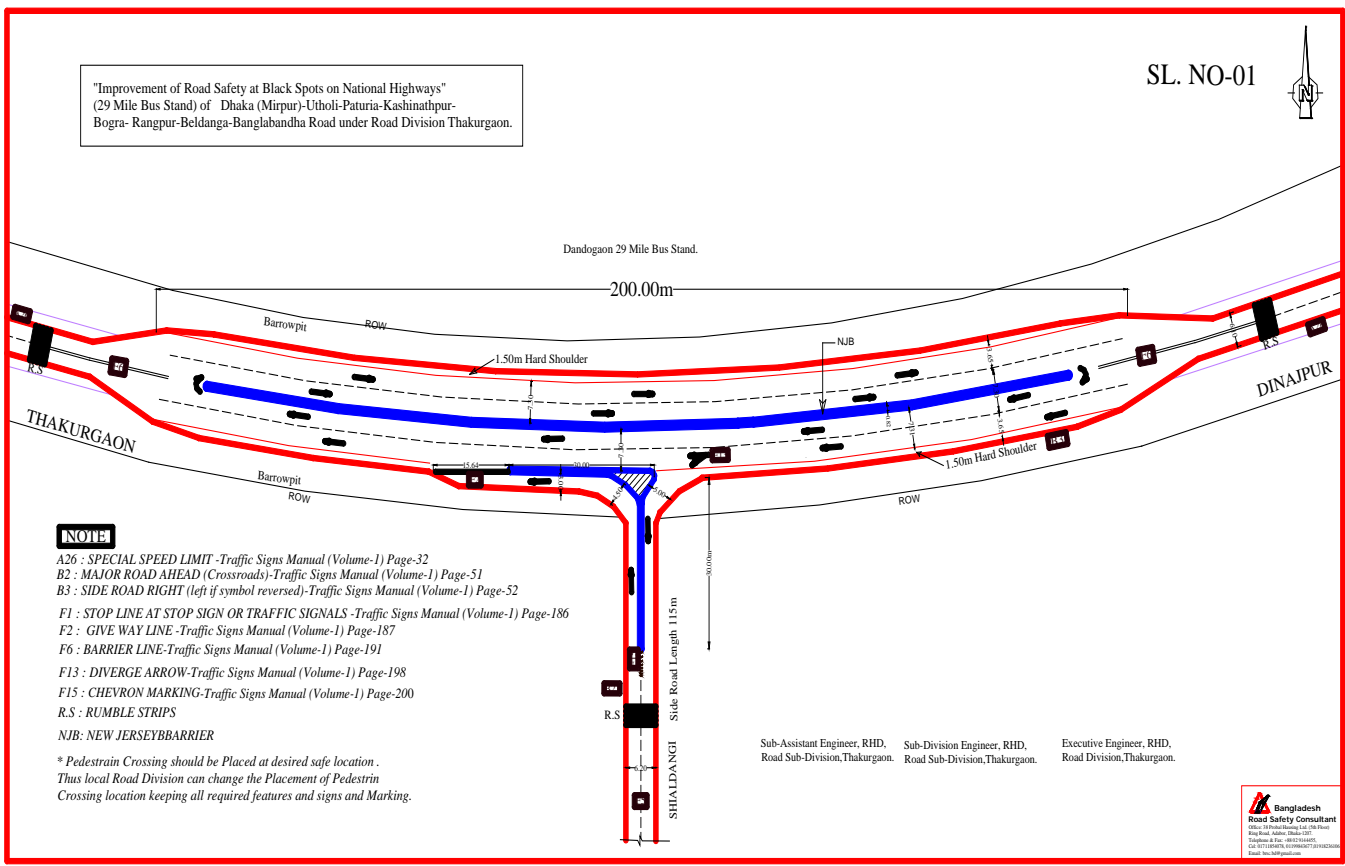
**Presence of
Mixed Traffic**

**Head-on,
Rear-end or
Side Impact
Collision**

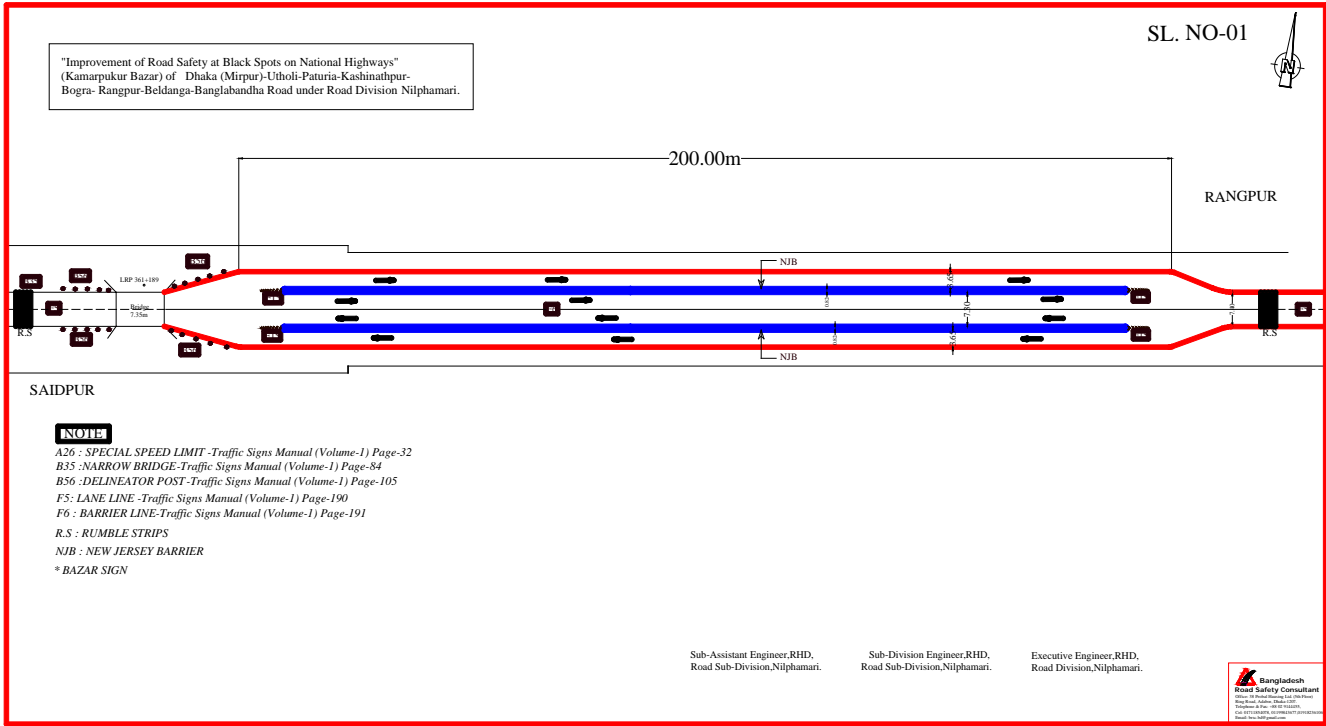
Routine works to mitigate Black Spots



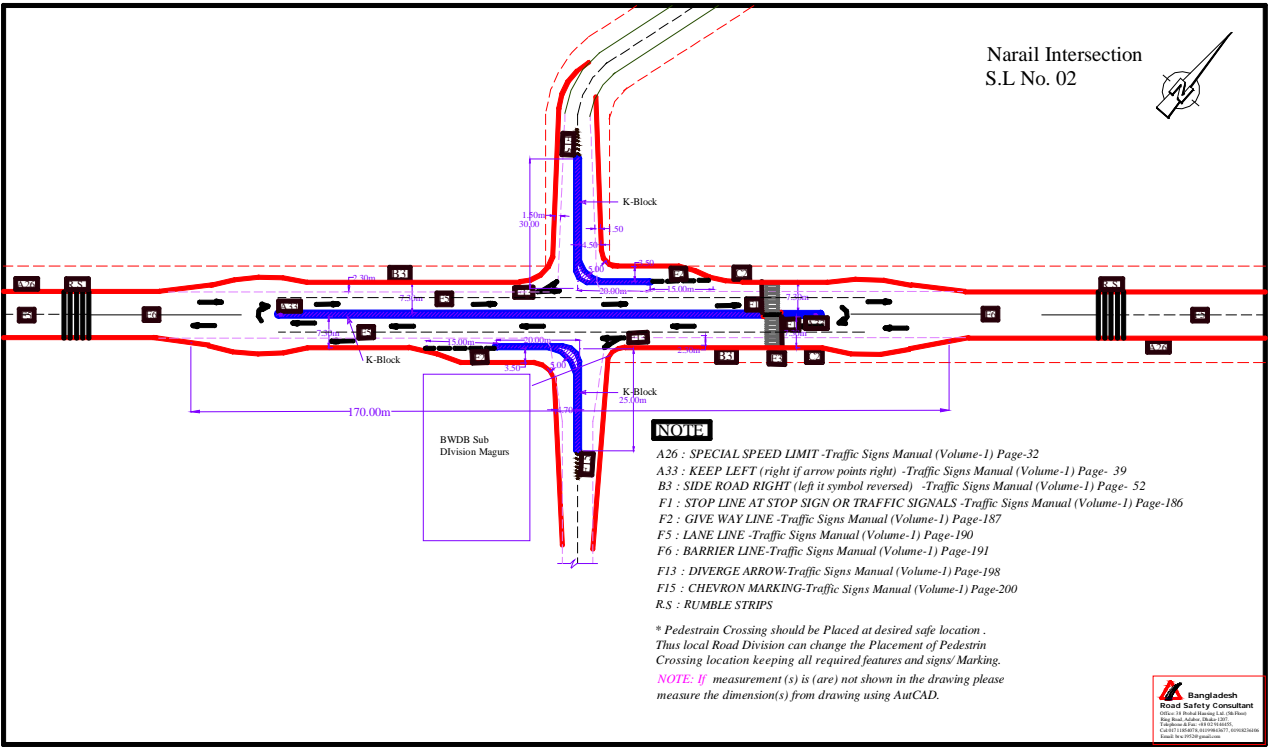
Easing of curves



Bazaar Area Development



Bazaar Area Development (2 T-junction)



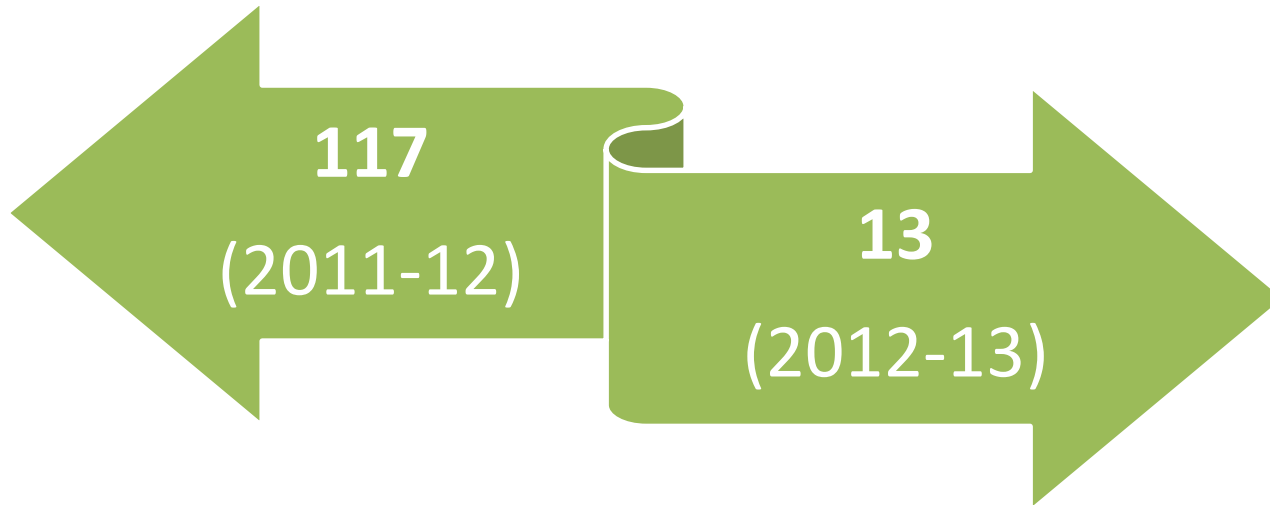
Routine works to improve Road Safety

**12 Backspots
addressed on National
Highway (NH-5) under
Manikgonj Road Division**



Outcome of Road Safety measures in RHD

Mortality Reduction in Dhaka-Aricha National Highway (NH-5)



**88.89%
Reduction**

Thank you