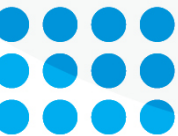




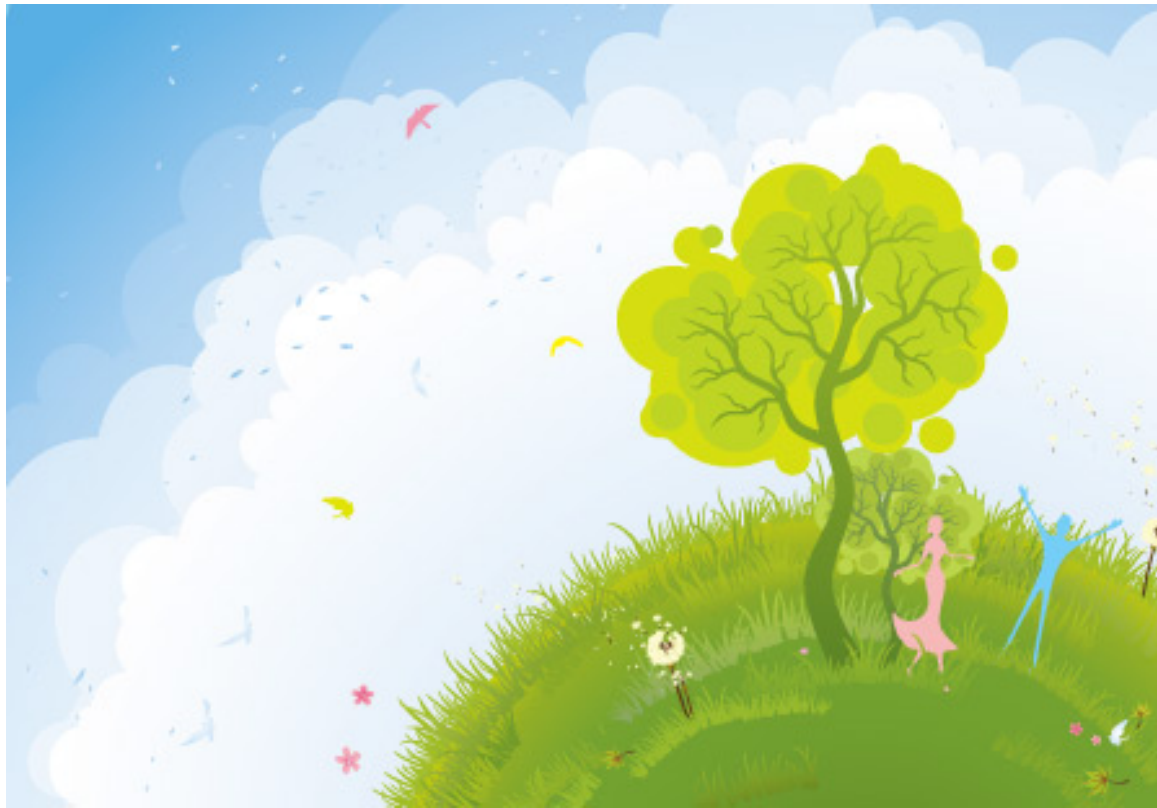
Brazilian Association of Solid Waste Companies



South America
Subregional Secretariat



ISWA Representation in Brazil



The Future we want for the Waste Sector

Gabriel Gil Bras Maria

Solid Waste Panorama

➤ The Waste Sector

More populous world = + waste

2011 = 7 bi inh = 1,3 bi/ton MSW

2025 = 8 bi inh = 2,2 bi/ton MSW

- Environment and Sustainability =
SURVIVAL



PANORAMA 2011



Generation in
Brazil
61,9 million t/year

Management in
Brazil
55,5 million t/year

Generation *per capita* (kg/inh/day)
Brazil
1,223

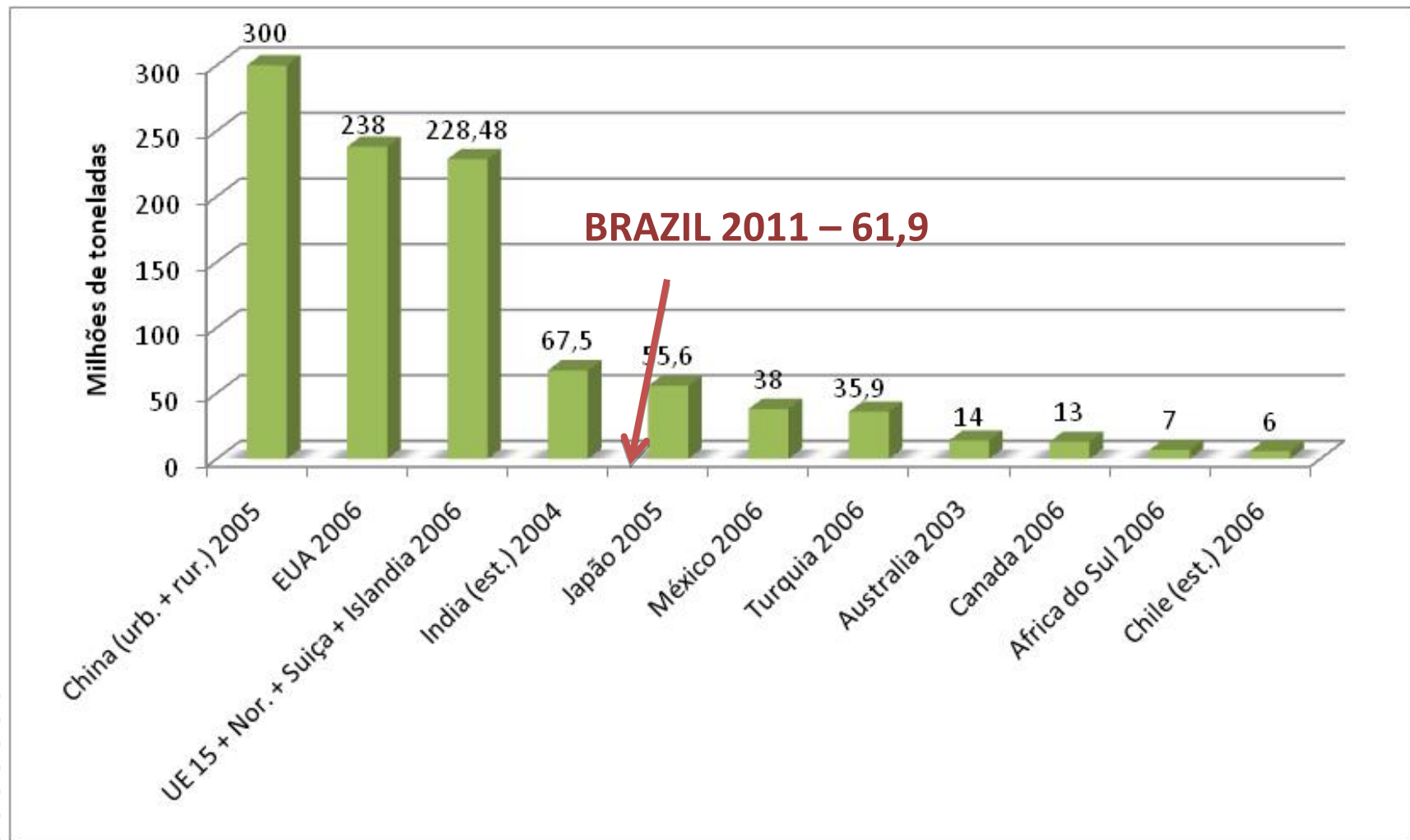


MSW Management
in Brazil (ton/year)

32,2
mi/ton
58,1%

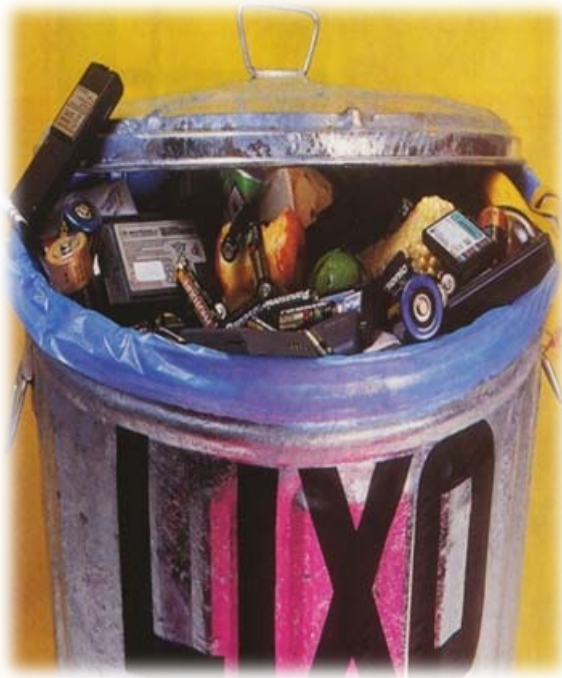
23,3
mi/ton
41,9%

➤ MSW Generation in selected countries



Challenges for the SW Management

- Increasing amounts of waste
- Scarcity of natural resources
- Different types/classes of waste – Waste composition is increasingly complicated



- Adequated Final Destination



The Society

Environmental Questions



- 80% of the Brazilian population have some worry for the environment
- 47% of the interviewed people believe that it is possible to conciliate environmental protection with economic growth
- 51% would accept to pay more for environmentally sound products – only 10% chose this option when buying
- 52% consider that tax and incentive measures “as tax reduction and other benefits” are more efficient to encourage environmental improvement

**HIGH LEVEL OF AWARENESS =
MATURITY**

CNI – IBOPE Research (dez.2010)

DIFICULTIES

Bring the speech to practice.

Change personal and consumption habits.

Necessity to link consumption patterns to sustainability.

Too much information about facts and concepts but lack of instructions on how to act.

Solutions do not rely only on individual actions but need a collective agreement.

Outcome of RIO + 20 and the Waste Sector:

The word "waste" was mentioned more than 20 times in the document "The future we want".

This reflects the importance of the solid waste sector in panorama and environmental agenda of global leaders.

The way to move forward must be based on the principles agreed on the declaration supporting local authorities in surpassing their deficiencies.





This can be seen in item 60 of the document “The Future That We Want”:

60. We acknowledge that green economy in the context of sustainable development and poverty eradication will enhance our ability to manage natural resources sustainably and with lower negative environmental impacts, increase resource efficiency and reduce waste.

215. We are deeply concerned that many countries, in particular least developed countries, lack the capacity for sound management of chemicals and waste throughout their life-cycle. Additional efforts are needed to enhance work towards strengthening capacities, including through partnerships, technical assistance and improved governance structures. We encourage countries and organizations which have made progress toward achieving the goal of sound management of chemicals by 2020 to assist other countries by sharing knowledge, experience and best practices.



218. *We recognize the importance of adopting a life-cycle approach and of further development and implementation of policies for resource efficiency and environmentally sound waste management. We therefore commit to further reduce, reuse and recycle waste (3Rs) as well as to increase energy recovery from waste with a view to managing the majority of global waste in an environmentally sound manner and where possible as a resource. Solid wastes, such as electronic waste and plastics, pose particular challenges which should be addressed. We call for the development and enforcement of comprehensive national and local waste management policies, strategies, laws and regulations.*

Final Remarks: Agenda for the future

➤ Final Remarks



Moment to create the rules of the "new age" > **new global system** = step into a more proactive role.

Solid Waste = Integrated system – connected actions.

There is no unique solution nor isolated measure.

Planning is mandatory, but not enough. It is crucial to implement the planned solutions.

Cooperative action among public and private sector (shared responsibility) – commitment for the success.

Paradigm: change from a linear management towards a cyclical system.

Thank you!

Gabriel Gil Bras Maria

gabriel@abrelpe.org.br

www.abrelpe.org.br

Twitter: @abrelpe

Facebook: Abrelpe

